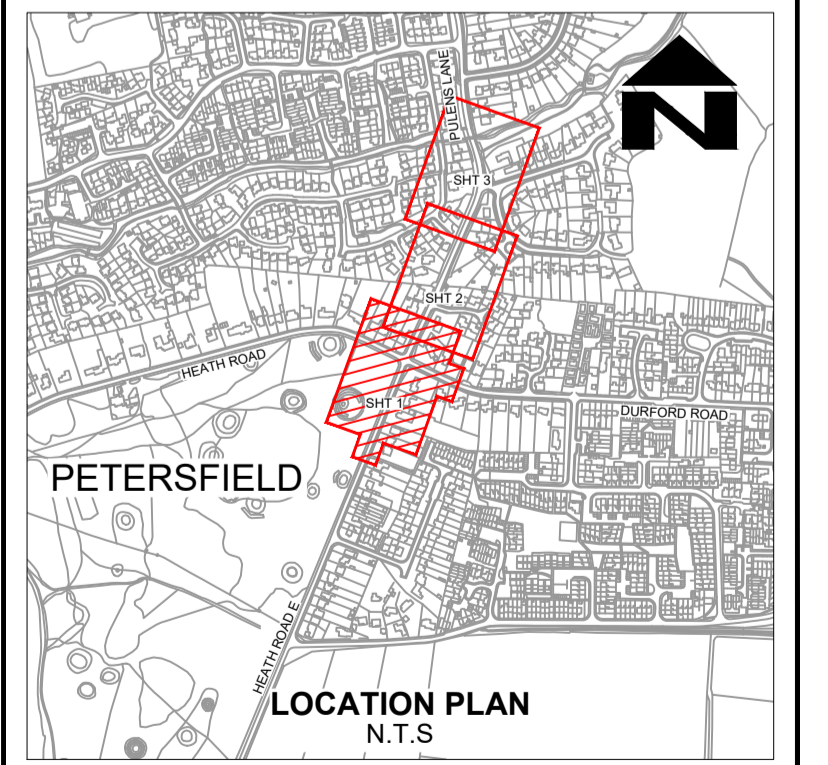


- KEY**
- PROPOSED, RELOCATED AND EXISTING GULLY (DETAILS TO BE CONFIRMED)
  - PROPOSED CONCRETE GRIP WITH PROPOSED DITCH TO HCC11/1/125B
  - TB ● PROPOSED TIMBER BOLLARD TO STANDARD DETAIL HCC11/C/135
  - PB# ● RELOCATED PLASTIC BOLLARD
  - PC1 PC1 PROPOSED TYPE PC1 PRECAST CONCRETE KERB TO HCC11/C/010
  - PC3 PC3 PROPOSED TYPE PC3 PRECAST CONCRETE KERB TO HCC11/C/010
  - TR PC1 PROPOSED TYPE PC1 PRECAST CONCRETE KERB TO HCC11/C/010 WITH TRANSITION TO DIFFERENT UPSTAND
  - PC4 PC4 PROPOSED TYPE PC4 PRECAST CONCRETE KERB TO HCC11/C/010 WITH 2 No. TRANSITION KERBS (AT CROSSINGS)
  - ○ EXISTING, PROPOSED/RELOCATED LIGHTING COLUMN. SEE DRAWINGS CJ009618-HEH-HLG-12314910-DR-EO-0001 AND 0002
  - ■ PROPOSED BUFF COLOURED TACTILE PAVING FLAGS OR BLOCKS TO STANDARD DETAIL HCC11/C/060
  - ■ PROPOSED HAZARD/LADDER & TRAMLINE PAVING
  - PS# ■ ■ PROPOSED/RELOCATED TRAFFIC SIGN/STREET NAME PLATE ON NEW POST OR POSTS WITH REFERENCE
  - ES# ■ ■ PROPOSED EXTERNALLY ILLUMINATED SIGN ON NEW POST WITH REFERENCE
  - PS# ○ ○ PROPOSED/RELOCATED TRAFFIC SIGN ON EXISTING LAMP COLUMN WITH REFERENCE
  - ■ PROPOSED TYPE 1A FULL DEPTH FOOTWAY CONSTRUCTION TO STANDARD DETAIL HCC11/C/045
  - ■ PROPOSED TYPE 1A OVERLAY FOOTWAY CONSTRUCTION TO HCC11/C/050
  - ■ PROPOSED TYPE 1A FOOTWAY RESURFACING TO HCC11/C/045
  - ■ PROPOSED CARRIAGEWAY INLAY RESURFACING
  - ■ PROPOSED FLAT TOP ROAD HUMPS/JUNCTION TABLE TO HCC11/C/100
  - ■ PROPOSED GENERAL FILL WITH 100mm DEPTH OF TOPSOIL FINISHED WITH GRASS SEED
  - ■ PROPOSED 1.4m HIGH GALVANISED STEEL PEDESTRIAN PARAPET SYSTEM
  - ■ PROPOSED CHAMBER/ADJUSTED ACCESS COVER AND FRAME
  - ■ PROPOSED WHITE OR YELLOW COLOURED ROAD MARKING TO TSRGD 2016 DIAGRAM NUMBERS
  - EF EF PROPOSED PRECAST CONCRETE EDGING TO STANDARD DETAIL HCC/C/045
  - TE TE PROPOSED TIMBER EDGING TO STANDARD DETAIL HCC11/C/050
  - BN ○ ○ RELOCATED BIN
  - ■ EXISTING HIGHWAY BOUNDARY
  - ### ■ ■ EXISTING TRAFFIC SIGN TO BE RETAINED
  - SNP ■ ■ EXISTING STREET NAME PLATE TO BE RETAINED
  - ES# ■ ■ EXISTING EXTERNALLY ILLUMINATED SIGN TO BE RETAINED
  - ■ EXISTING ROAD MARKING/SURFACE TREATMENT TO BE RETAINED



© CROWN COPYRIGHT AND DATABASE RIGHTS 2025  
ORDNANCE SURVEY 100019180

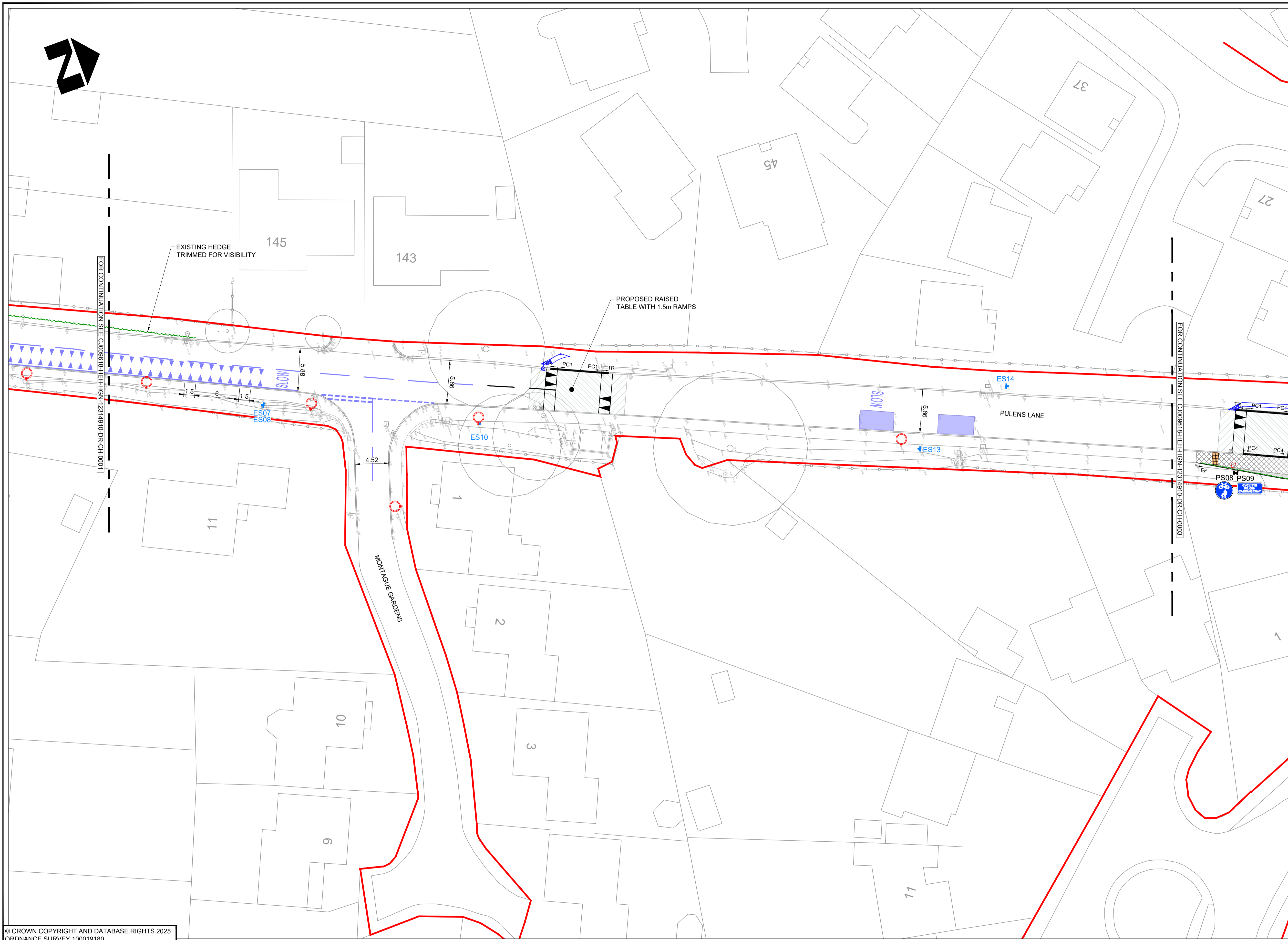
SUIT	REV	PURPOSE OF ISSUE AND DESCRIPTION OF AMENDMENTS	DATE	DESIGNER	CAD	CHKD	APPD
S3	P02	RAISED TABLE RELOCATIONS, EXTENSION TO CROSSROADS TABLE. COLOURED FOOTWAY DELETED. PROPOSED DRAINAGE GULLIES UPDATED.	17.06.2025	SM	AC	KJ	[Signature]
S3	P01	FIT FOR INTERNAL REVIEW	04.03.2025	SM	RM	WW	CJP

CLIENT  
**HAMPSHIRE COUNTY COUNCIL**  
UNIVERSAL SERVICES DIRECTORATE  
TRANSPORT IMPLEMENTATION

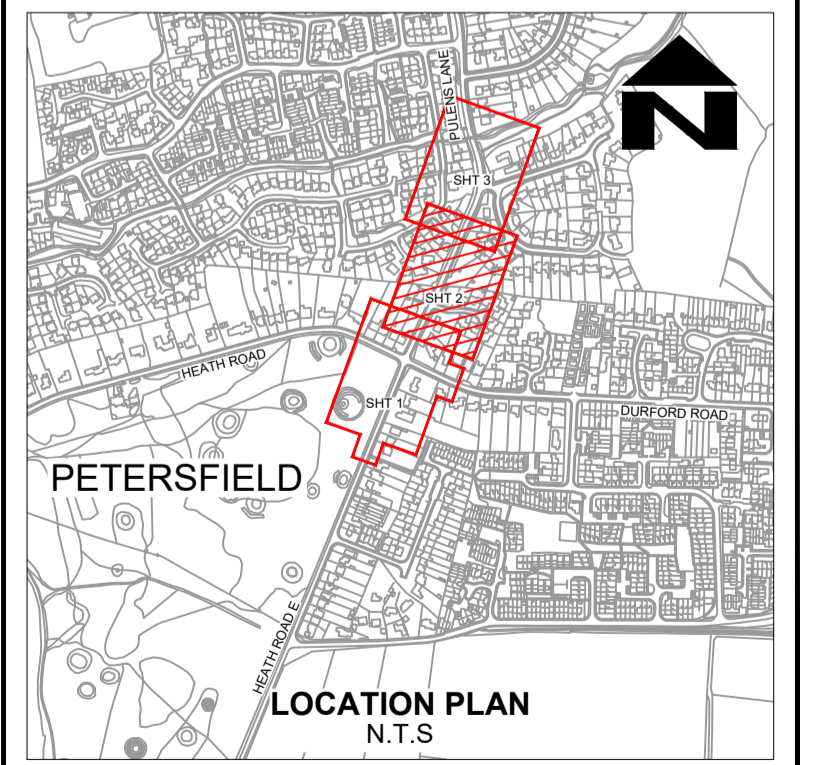
CONSULTANT  
**Hampshire County Council**  
Engineering Services  
TIM LAWTON BEng CEng FICE FCIHT - ASSISTANT DIRECTOR OF UNIVERSAL SERVICES

HORIZONTAL SCALE @ A1  
1:250  
VERTICAL SCALE @ A1  
N/A  
SHEET NUMBER  
1 OF 3  
SCHEME  
PULEMS LANE  
PETERSFIELD  
PLACEMAKING  
JOB No. CJ009618.01

DRAWING TITLE  
GENERAL ARRANGEMENT  
HCC CAD PLOT: 23/6/2025 12:05:34  
SUIT REV  
S3 P02



- KEY**
- PROPOSED, RELOCATED AND EXISTING GULLY (DETAILS TO BE CONFIRMED)
  - PROPOSED CONCRETE GRIP WITH PROPOSED DITCH TO HCC11/1/125B
  - TB ● PROPOSED TIMBER BOLLARD TO STANDARD DETAIL HCC11/C/135
  - PB# ● RELOCATED PLASTIC BOLLARD
  - PC1 PC1 PROPOSED TYPE PC1 PRECAST CONCRETE KERB TO HCC11/C/010
  - PC3 PC3 PROPOSED TYPE PC3 PRECAST CONCRETE KERB TO HCC11/C/010
  - TR PC1 PROPOSED TYPE PC1 PRECAST CONCRETE KERB TO HCC11/C/010 WITH TRANSITION TO DIFFERENT UPSTAND
  - PC4 PC4 PROPOSED TYPE PC4 PRECAST CONCRETE KERB TO HCC11/C/010 WITH 2 No. TRANSITION KERBS (AT CROSSINGS)
  - ○ EXISTING, PROPOSED/RELOCATED LIGHTING COLUMN. SEE DRAWINGS C/J009618-HEH-HGN-12314910-DR-EO-0001 AND 0002
  - ■ PROPOSED BUFF COLOURED TACTILE PAVING FLAGS OR BLOCKS TO STANDARD DETAIL HCC11/C/060
  - ■ PROPOSED HAZARD/LADDER & TRAMLINE PAVING
  - PS# ■ PROPOSED/RELOCATED TRAFFIC SIGN/STREET NAME PLATE ON NEW POST OR POSTS WITH REFERENCE
  - ES# ■ PROPOSED EXTERNALLY ILLUMINATED SIGN ON NEW POST WITH REFERENCE
  - PS# ○ PROPOSED/RELOCATED TRAFFIC SIGN ON EXISTING LAMP COLUMN WITH REFERENCE
  - ■ PROPOSED TYPE 1A FULL DEPTH FOOTWAY CONSTRUCTION TO STANDARD DETAIL HCC11/C/045
  - ■ PROPOSED TYPE 1A OVERLAY FOOTWAY CONSTRUCTION TO HCC11/C/045 WITH REGULATING
  - ■ PROPOSED TYPE 4 FOOTWAY RESURFACING TO HCC11/C/050
  - ■ PROPOSED TYPE 1A FOOTWAY RESURFACING TO HCC11/C/045
  - ■ PROPOSED CARRIAGEWAY INLAY RESURFACING
  - ■ PROPOSED FLAT TOP ROAD HUMPS/JUNCTION TABLE TO HCC11/C/100
  - ■ PROPOSED GENERAL FILL WITH 100mm DEPTH OF TOPSOIL FINISHED WITH GRASS SEED
  - - - PROPOSED 1.4m HIGH GALVANISED STEEL PEDESTRIAN PARAPET SYSTEM
  - □ PROPOSED CHAMBER/ADJUSTED ACCESS COVER AND FRAME
  - - - PROPOSED WHITE OR YELLOW COLOURED ROAD MARKING TO TSRGD 2016 DIAGRAM NUMBERS
  - EF EF PROPOSED PRECAST CONCRETE EDGING TO STANDARD DETAIL HCC11/C/045
  - TE TE PROPOSED TIMBER EDGING TO STANDARD DETAIL HCC11/C/050
  - BN ○ RELOCATED BIN
  - EXISTING HIGHWAY BOUNDARY
  - ### ■ EXISTING TRAFFIC SIGN TO BE RETAINED
  - SNP ■ EXISTING STREET NAME PLATE TO BE RETAINED
  - ES# ■ EXISTING EXTERNALLY ILLUMINATED SIGN TO BE RETAINED
  - ■ EXISTING ROAD MARKING/SURFACE TREATMENT TO BE RETAINED



© CROWN COPYRIGHT AND DATABASE RIGHTS 2025  
ORDNANCE SURVEY 100019180

SUIT	REV	PURPOSE OF ISSUE AND DESCRIPTION OF AMENDMENTS	DATE	DESIGNER	CAD	CHKD	APPD
S3	P02	RAISED TABLE RELOCATIONS, EXTENSION TO CROSSROADS TABLE, COLOURED FOOTWAY DELETED, PROPOSED DRAINAGE GULLIES UPDATED.	17.06.2025	SM	AC	KJ	<i>[Signature]</i>
S3	P01	FIT FOR INTERNAL REVIEW	04.03.2025	SM	RM	WW	CJP

CLIENT  
**HAMPSHIRE COUNTY COUNCIL  
UNIVERSAL SERVICES DIRECTORATE  
TRANSPORT IMPLEMENTATION**

CONSULTANT  
**Hampshire  
County Council**  
Engineering Services

TIM LAWTON BEng CEng FICE FCIHT - ASSISTANT DIRECTOR OF UNIVERSAL SERVICES

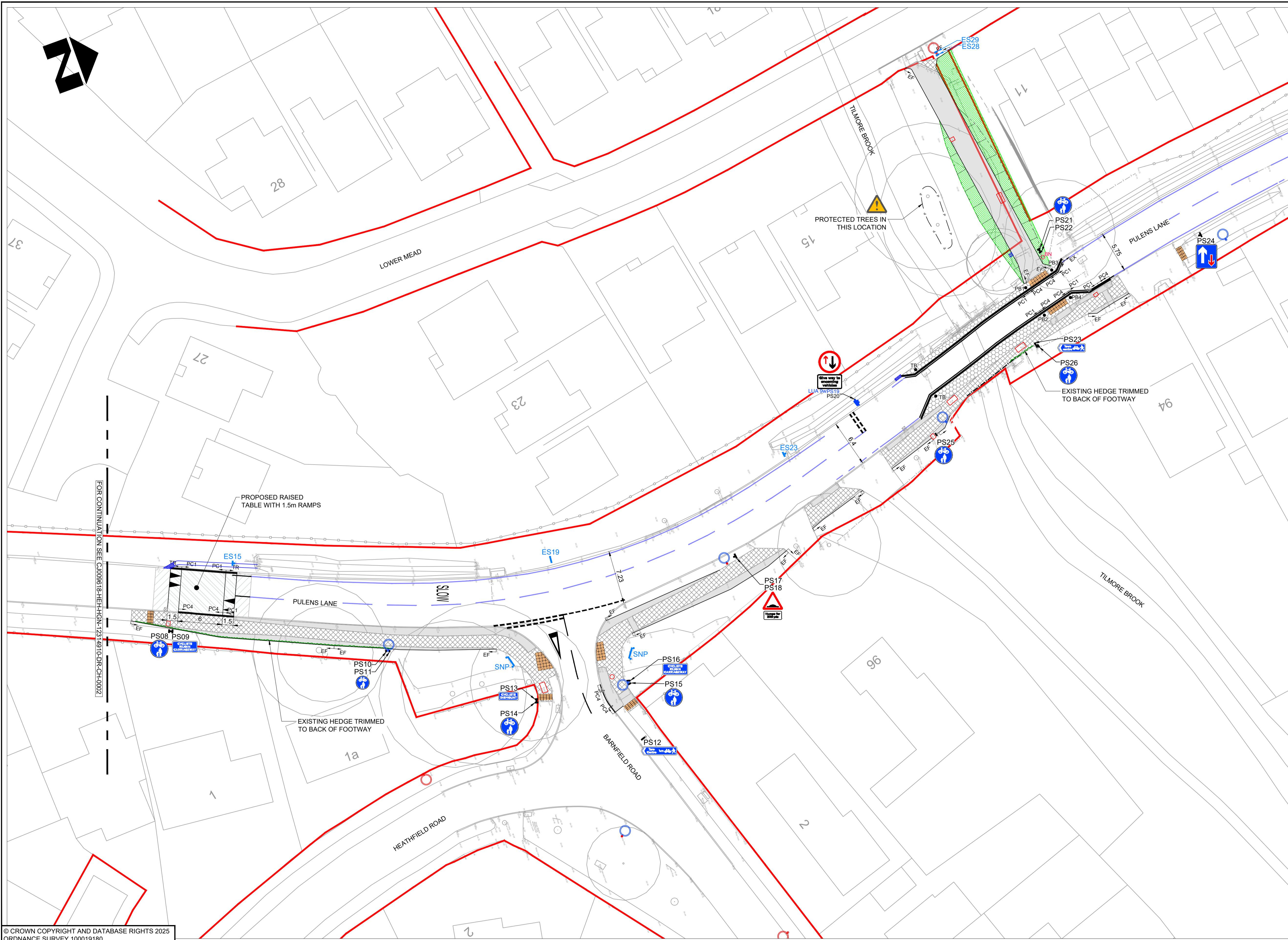
HORIZONTAL SCALE @ A1  
1:250  
VERTICAL SCALE @ A1  
N/A  
SHEET NUMBER  
2 OF 3

SCHEME  
**PULENS LANE  
PETERSFIELD  
PLACEMAKING**

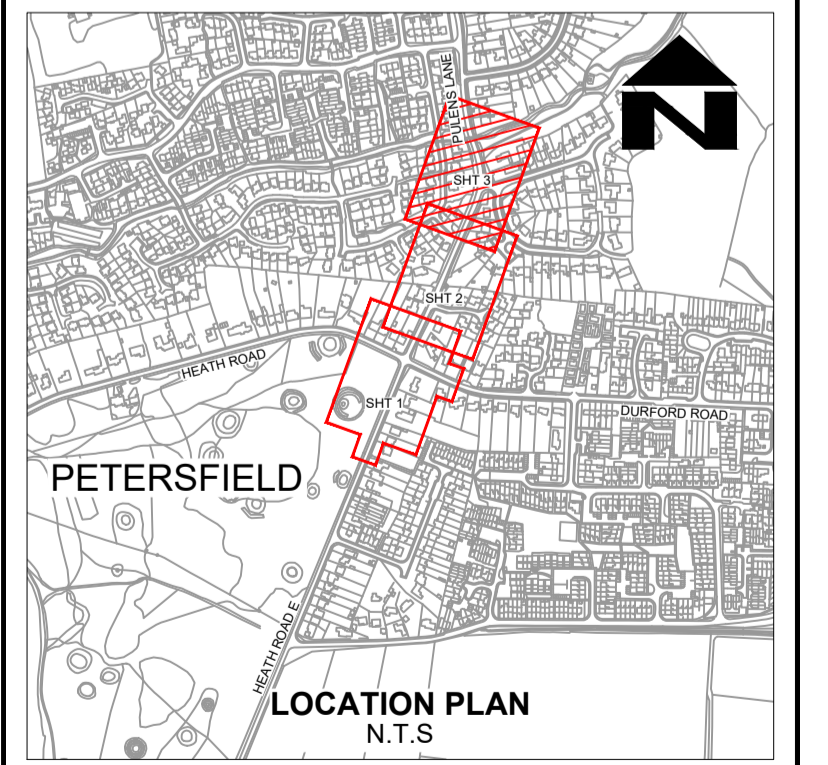
DRAWING TITLE  
**GENERAL ARRANGEMENT**

JOB No. C/J009618.01  
HCC CAD PLOT: 23/06/2025 12:05:40

SUIT REV  
**S3 P02**



- KEY**
- PROPOSED, RELOCATED AND EXISTING GULLY (DETAILS TO BE CONFIRMED)
  - PROPOSED CONCRETE GRIP WITH PROPOSED DITCH TO HCC11/1/125B
  - TB ● PROPOSED TIMBER BOLLARD TO STANDARD DETAIL HCC11/C/135
  - PB# ● RELOCATED PLASTIC BOLLARD
  - PC1 PC1 PROPOSED TYPE PC1 PRECAST CONCRETE KERB TO HCC11/C/010
  - PC3 PC3 PROPOSED TYPE PC3 PRECAST CONCRETE KERB TO HCC11/C/010
  - TR PC1 PROPOSED TYPE PC1 PRECAST CONCRETE KERB TO HCC11/C/010 WITH TRANSITION TO DIFFERENT UPSTAND
  - PC4 PC4 PROPOSED TYPE PC4 PRECAST CONCRETE KERB TO HCC11/C/010 WITH 2 No. TRANSITION KERBS (AT CROSSINGS)
  - EXISTING, PROPOSED/RELOCATED LIGHTING COLUMN. SEE DRAWINGS C/J009618-HEH-HLG-12314910-DR-EO-0001 AND 0002
  - PROPOSED BUFF COLOURED TACTILE PAVING FLAGS OR BLOCKS TO STANDARD DETAIL HCC11/C/060
  - PROPOSED HAZARD/LADDER & TRAMLINE PAVING
  - PS# PROPOSED/RELOCATED TRAFFIC SIGN/STREET NAME PLATE ON NEW POST OR POSTS WITH REFERENCE
  - ES# PROPOSED EXTERNALLY ILLUMINATED SIGN ON NEW POST WITH REFERENCE
  - PS# PROPOSED/RELOCATED TRAFFIC SIGN ON EXISTING LAMP COLUMN WITH REFERENCE
  - PROPOSED TYPE 1A FULL DEPTH FOOTWAY CONSTRUCTION TO STANDARD DETAIL HCC11/C/045
  - PROPOSED TYPE 1A OVERLAY FOOTWAY CONSTRUCTION TO HCC11/C/045 WITH REGULATING
  - PROPOSED TYPE 4 FOOTWAY CONSTRUCTION TO HCC11/C/050
  - PROPOSED TYPE 1A FOOTWAY RESURFACING TO HCC11/C/045
  - PROPOSED CARRIAGEWAY INLAY RESURFACING
  - PROPOSED FLAT TOP ROAD HUMP/JUNCTION TABLE TO HCC11/C/100
  - PROPOSED GENERAL FILL WITH 100mm DEPTH OF TOPSOIL FINISHED WITH GRASS SEED
  - PROPOSED 1.4m HIGH GALVANISED STEEL PEDESTRIAN PARAPET SYSTEM
  - PROPOSED CHAMBER/ADJUSTED ACCESS COVER AND FRAME
  - PROPOSED WHITE OR YELLOW COLOURED ROAD MARKING TO TSRGD 2016 DIAGRAM NUMBERS
  - EF EF PROPOSED PRECAST CONCRETE EDGING TO STANDARD DETAIL HCC11/C/045
  - TE TE PROPOSED TIMBER EDGING TO STANDARD DETAIL HCC11/C/050
  - BN ○ RELOCATED BIN
  - EXISTING HIGHWAY BOUNDARY
  - ### EXISTING TRAFFIC SIGN TO BE RETAINED
  - SNP EXISTING STREET NAME PLATE TO BE RETAINED
  - ES# EXISTING EXTERNALLY ILLUMINATED SIGN TO BE RETAINED
  - EXISTING ROAD MARKING/SURFACE TREATMENT TO BE RETAINED



© CROWN COPYRIGHT AND DATABASE RIGHTS 2025  
ORDNANCE SURVEY 100019180

SUIT	REV	PURPOSE OF ISSUE AND DESCRIPTION OF AMENDMENTS	DATE	DESIGNER	CAD	CHKD	APPD
S3	P02	RAISED TABLE RELOCATIONS, EXTENSION TO CROSSROADS TABLE. COLOURED FOOTWAY DELETED. PROPOSED DRAINAGE GULLIES UPDATED.	17.06.2025	SM	AC	KJ	<i>[Signature]</i>
S3	P01	FIT FOR INTERNAL REVIEW	04.03.2025	SM	RM	WW	CJP

CLIENT  
**HAMPSHIRE COUNTY COUNCIL  
UNIVERSAL SERVICES DIRECTORATE  
TRANSPORT IMPLEMENTATION**

CONSULTANT  
**Hampshire  
County Council  
Engineering Services**

TIM LAWTON BEng CEng FICE FCIHT - ASSISTANT DIRECTOR OF UNIVERSAL SERVICES

HORIZONTAL SCALE @ A1  
1:250  
VERTICAL SCALE @ A1  
N/A  
SHEET NUMBER  
3 OF 3

SCHEME  
**PULENS LANE  
PETERSFIELD  
PLACEMAKING**

DRAWING TITLE  
**GENERAL ARRANGEMENT**

JOB No. C/J009618.01  
HCC CAD PLOT: 23/06/2025 12:05:46

SUIT REV  
**S3 P02**