

Hampshire
2050

Fareham and Gosport Transport Strategy consultation report 2025

Images from Hampshire County Council and Google Streetview

© 2025 Google

Key findings

Key findings



Agreement with Strategy vision:

48% of respondents agreed that the strategy would achieve its vision, while 30% disagreed.

Main reasons for disagreement:

- it would not resolve issues with peninsula access
- lack of confidence that public transport would meet people's needs
- making a shift from car use to sustainable travel is unlikely



Critical issues:

- active travel: narrow pavements and parking on pavements
- public transport: infrequent buses outside of the Eclipse Busway
- highways: increased traffic from new developments



Most impactful actions:

- improving transport links beyond Fareham and Gosport
- ensuring new developments are well-served by sustainable transport



What's missing:

- most comments focused on public transport, particularly the need for more and/ or improved bus services

Perceived impacts:

- ⊕ • positive: more travel options, reduced traffic, increased sustainable travel, environmental improvements, improved safety, and reliable journey times.
- ⊖ • negative: little or no impact (especially on peninsula access) and increased traffic and congestion

Introduction

Fareham and Gosport Transport Strategy Consultation– aims and method



Background

Hampshire County Council, as the Highway and Transport Authority for the boroughs of Fareham and Gosport, developed a draft Transport Strategy and Action Plan setting out proposed transport improvements in the Fareham and Gosport areas up to 2050. The Strategy has been developed in line with Hampshire's [Local Transport Plan \(LTP4\)](#).

The draft Strategy outlines the transport challenges and opportunities and proposes broad themes to deliver the vision and outcomes within the next 25 years.

The Strategy considers all forms of transport in the boroughs – walking and wheeling (using a wheelchair or mobility scooter), cycling, road, rail and ferry – and identifies actions in different locations.



Method

Hampshire County Council carried out a consultation, using a feedback form which was available online and in alternative formats. The full Strategy and action plan was published on the Hampshire County Council website, along with a summary of its key proposals. To raise awareness, the consultation was promoted on the Council's Facebook page and supported by a wider social media campaign.

The feedback form was available from 10 November to 21 December 2025.

The views expressed in this report came from responses to an open feedback form (available to anyone to complete), written correspondence and social media comments. There were no quotas or sampling targets, in keeping with the spirit of open engagement. All questions in the survey were optional, and the base therefore changes throughout the report. This is noted on each chart.

Note: Where percentages do not total to 100%, this is due to rounding.


Consultation response


In total, the consultation received 192 responses, of which 167 were submitted via the consultation Response Form, and 25 as unstructured responses via email or social media comments. There was an even split of respondents from Fareham and Gosport. 85% of respondents used a private motor vehicle at least once a week, more than twice the proportion who used public transport (40%).

Survey responses:

 167 responses were submitted via the online feedback form.


Of those who specified:

 162 were individuals

 Seven were an organisation, group or business

Unstructured responses:

 19 were received via email

 Six were received via social media comments

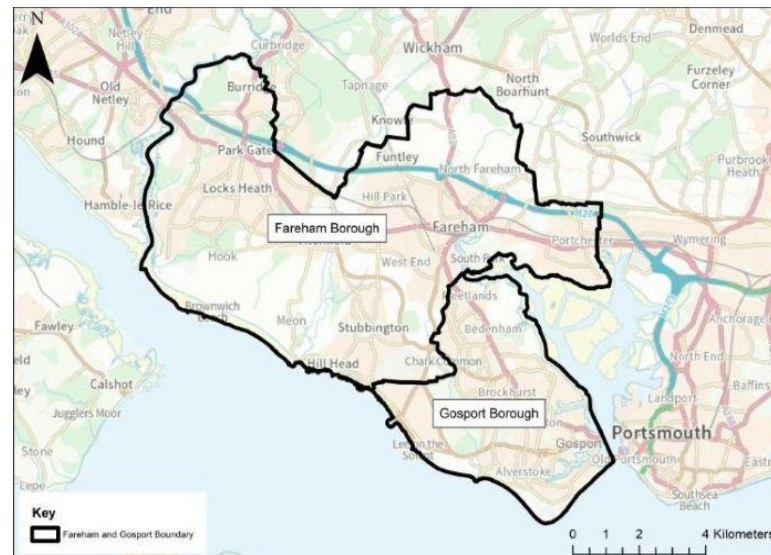
Respondent location (base: 161)

Fareham Borough: 73

Gosport Borough: 77

Outside Fareham and Gosport: 8

Prefer not to say: 3



Mode of transport used once a week or more...

Private motorised Vehicle  85%

Active transport  71%

Public transport  40%

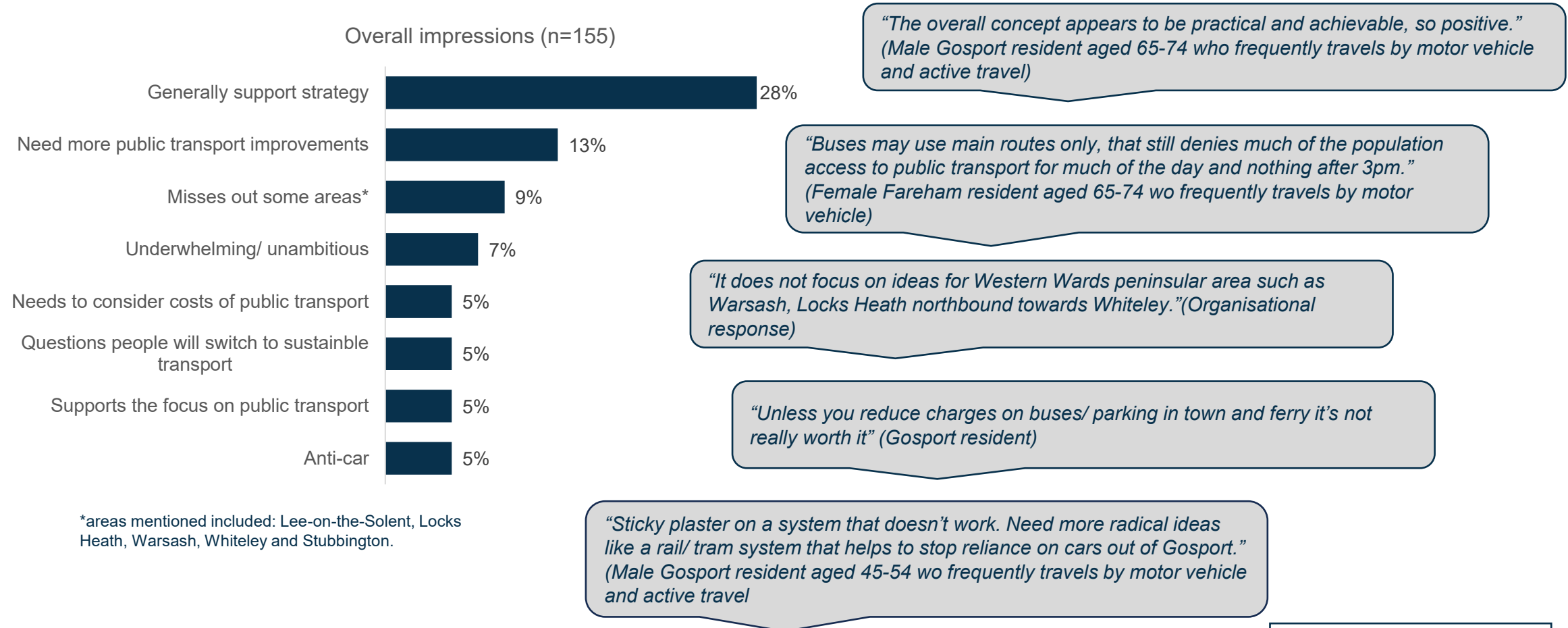
Wheelchair/mobility scooter  6%

12% of respondents did not have a motor vehicle within their household

Detailed findings

Overall impressions of the strategy

The most frequently made comments showed general support for the strategy (28%). However, there was feeling that more should be done to improve public transport to encourage people to switch to more sustainable travel options.



What are your overall impressions of the strategy?

Mentions above 4% shown

Agreement that the Strategy will address its vision

About half of respondents (48%) agreed the Strategy would achieve its vision, while 30% disagreed. The main reason for disagreement was low confidence that people would switch from car travel to more sustainable modes.

48% of respondents agreed the Strategy will address the vision



Agreement was significantly higher amongst Gosport residents compared to Fareham residents

30% of respondents disagreed the Strategy will address the vision



Reasons for disagreement included:

- people won't change their behaviour (six comments)
- doesn't resolve peninsula access (five comments)
- lack of confidence that public transport is viable or will meet needs (five comments)
- there are communities without public transport (four comments)
- cars are essential for some people (four comments)
- the strategy needs to focus on the whole borough/ some areas are neglected e.g. Lee-on-the-Solent and Stubbington (four comments)

*To what extent do you agree or disagree that the Fareham and Gosport Transport Strategy will address the vision?
Please explain why you do not agree in the box below.*

Most critical active travel issues within Fareham and Gosport

Narrow pavements and pavement parking were considered the most critical issues for active travel, cited by just over half of respondents (52%). This issue was most important for people without a car and those using wheelchairs or mobility scooters.

"Stop housing developments with small numbers of car spaces. These become awful for residents as cars are parked where they shouldn't be making walking and cycling an issue." (Gosport resident who frequently travels by motor vehicle and active travel and regularly uses public transport)

**Most critical issue*:
Narrow pavements and
vehicle parking on
pavements (52%)**

This was identified as the most critical active travel issue among respondents who use a wheelchair or mobility scooter and those who do not have a car in their household.

A significantly higher proportion of women selected this option compared to men.

Other issues* recognised included:

- feeling unsafe due to the amount and speed of traffic, combined with a lack of safe crossings (42%)
- disconnected walking and cycling routes due to busy roads and physical barriers of rivers and railways (36%)
- lack of dedicated cycle routes - most routes are shared with pedestrians or sub-standard on-road cycle lanes (32%)
- gaps in the cycle network with many areas without cycle routes (27%)

Select up to 3 issues relating to active travel (walking, wheeling* and cycling) that you think are the most critical?

*Respondents were asked to select the issues they considered most critical from a list provided in the strategy.

Issues selected by 25% or more of respondents shown

Most critical public transport issues within Fareham and Gosport

The top public transport concern was infrequent buses beyond the Eclipse Busway† (50%), followed closely by the absence of multi-mode travel tickets (47%). Respondents from Gosport selected this significantly more than those from Fareham.

Most critical issues*:

- infrequent buses outside of the Eclipse Busway† (50%)
- absence of all-in-one travel tickets or joined-up timetables across rail, bus and ferry (47%)

Infrequent buses outside the Eclipse Busway was the most critical public transport issue amongst people who don't have a vehicle within their household.

Lack of all-in-one tickets was seen as more critical by significantly more Gosport residents than Fareham residents.

"Anyone who lives near the eclipse bus route are lucky as they have a good bus service 7 days a week which runs late. Perhaps it would be worth looking into providing a similar service for the rest of Fareham?" (Female Fareham resident aged 45-54 who frequently travels by public transport and active travel)

"Provide a Transfer Ticket mechanism to enable passengers to ride multiple buses to reach their destination for the price of a single ticket. Many places in the UK provide this service." (Male Gosport resident aged 55-64 who frequently travels by active travel and motor vehicle and regularly used public transport)

Other issues recognised included*:

- poor quality bus stops and shelters and /or lack of real-time information at bus stops (40%)
- buses being unreliable or delayed due to too much traffic, parked cars and lack of bus priority (38%)

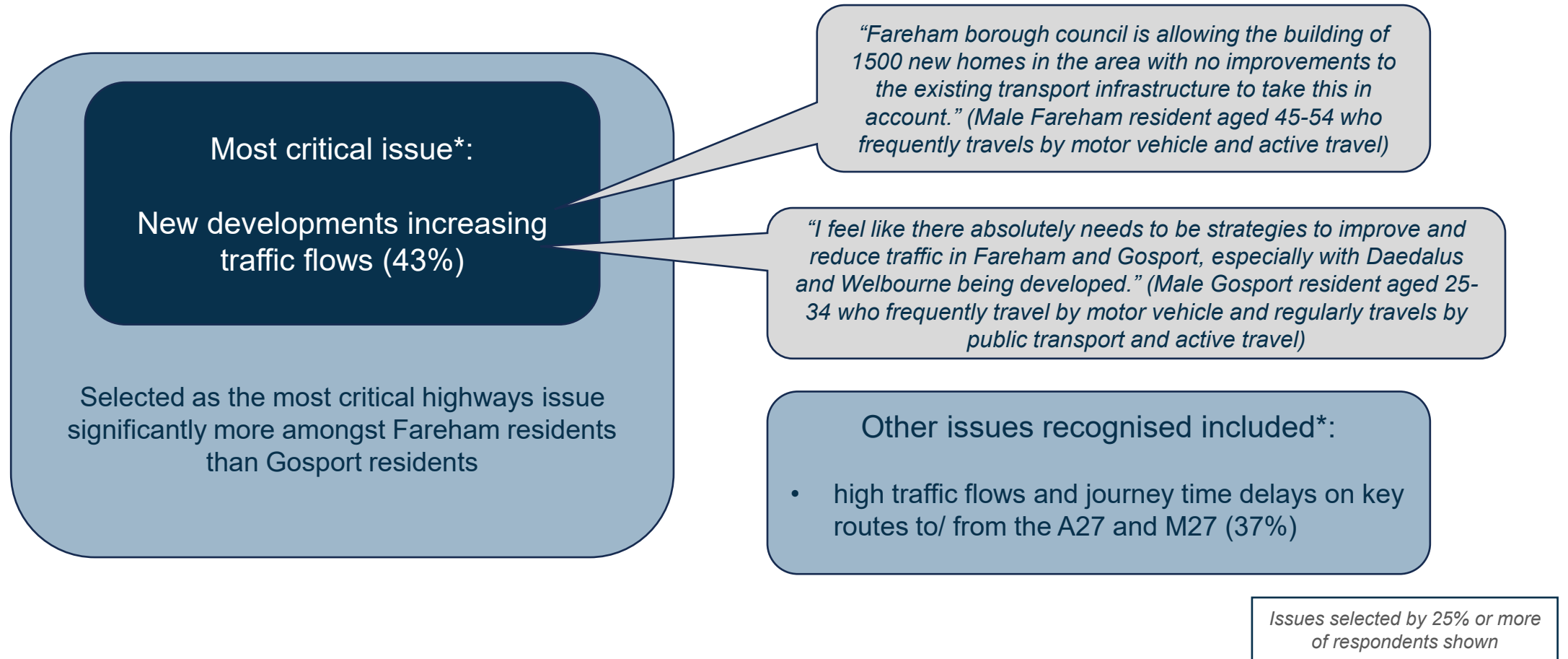
Issues selected by 25% or more of respondents shown

Select up to 4 issues relating to public transport that you think are the most critical?

*Respondents were asked to select the issues they considered most critical from a list provided in the strategy. † Eclipse Busway = Fast bus route between Fareham and Gosport

Most critical highways issues within Fareham and Gosport

Respondents identified traffic growth from new developments as the top highways concern (43%), this was identified more frequently by Fareham residents compared to those from Gosport.

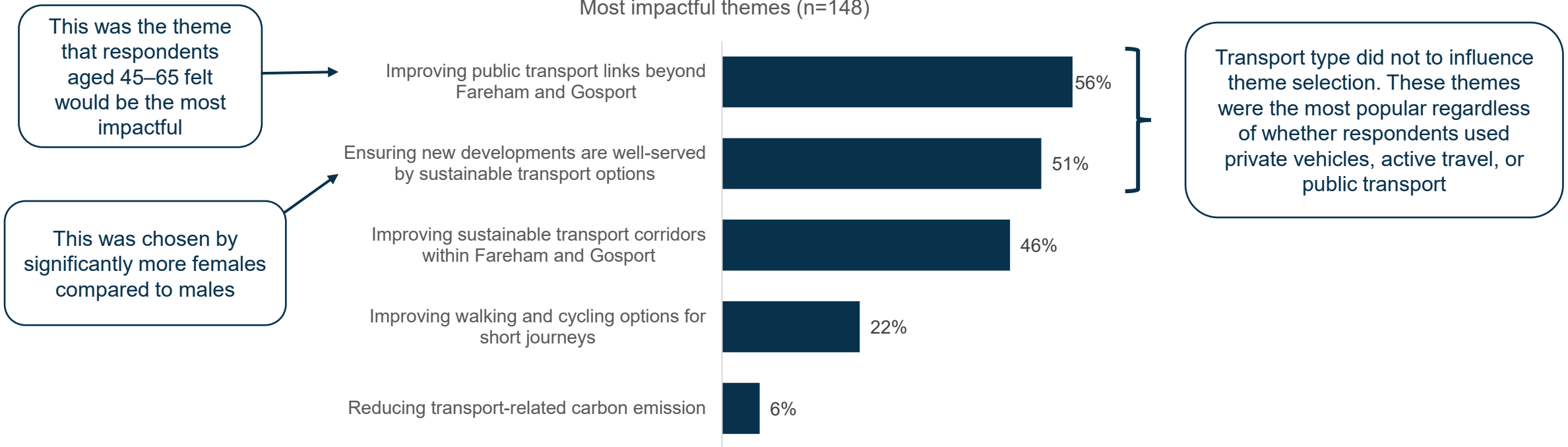


Select the issue relating to the highways that you think is the most critical? *Respondents were asked to select the issues they considered most critical from a list provided in the strategy.

Themes that would most impact delivery of the Strategy vision

Over half of respondents felt that improving public transport links beyond Fareham and Gosport (56%) and ensuring new developments are well served by sustainable transport options (51%) would have the most impact on delivering the Strategy vision.

Most impactful themes (n=148)



Select up to 2 themes you think will have the most impact on delivering the strategy vision?

Positive impacts of the Strategy

The Strategy's anticipated benefits included increased transport choices, less congestion, a move towards sustainable travel, environmental gains, improved safety, and more dependable journey times.

"If more people were to walk or cycle locally (where possible) there would be a reduction in traffic. Less traffic equals less pollution and a safer environment. Less traffic means those that have to drive will have more reliable journeys." (Male Fareham resident aged 65-74 who frequently travels by motor vehicle and active travel)

"Better public transport would hopefully cut car journeys and hence pollution." (Female Fareham resident aged 65-74 who frequently travel by public transport and active travel)

+ Positive impacts +

- More transport options (15 comments)
- Less traffic (14 comments)
- People choosing sustainable transport over the car (12 comments)
- Environmental improvements (eight comments)
- Improved safety, particularly for active travel (six comments)
- Improved, or more reliable, journey times (five comments)

"Would enable us to not have to use the car for everything. Enable young people to get around without relying on parents." (Female Fareham resident who frequently travels by motor vehicle and active travel)

"Improved the likelihood of people choosing to use sustainable transport options." (Male Gosport resident aged 65-74 who frequently travels by motor vehicle, public transport and active travel)

"Improvements to bus infrastructure will deliver quicker and less variable journey times." (Organisational response)

Includes comments made five times or more

If the strategy is adopted, what do you feel would be the main impacts on the local area and the people who live in, work in, travel through or visit Fareham and Gosport?

Negative impacts of the Strategy

Most negative comments focused on the Strategy having little or no impact, particularly on travel to and from Fareham and Gosport. This is a concern, as improving transport links beyond these areas was seen as the most impactful theme for achieving the Strategy vision (see slide 12).

“The locals still have no improvement to get to Fareham and Gosport. We have no night buses the last bus back from Fareham is 6pm so there is no way we can come to evening events in Fareham and Gosport.” (Female Fareham resident aged 55-64 who travels frequently using public transport and active travel)

“I think the bus priority and cycle improvements suggested will be detrimental to overall traffic/ car flow and have a negative impact overall.” (Female Fareham resident aged 35-44 who frequently travels by motor vehicle and active travel and regularly travels by public transport)

– Negative impacts –

- There will be little or no impact (19 comments)
- Little impact on travel to or from Fareham or Gosport (seven comments)
- Increased traffic and/ or congestion - due to using road space to prioritise buses and cycling, people not switching to sustainable travel and increased housing (six comments)

“For those east of Segensworth, improved public and private transport options. For those to the west and south-west, not so much change.” (Male Fareham resident aged 65-74 who frequently travels by motor vehicle and regularly travels by public transport and active travel)

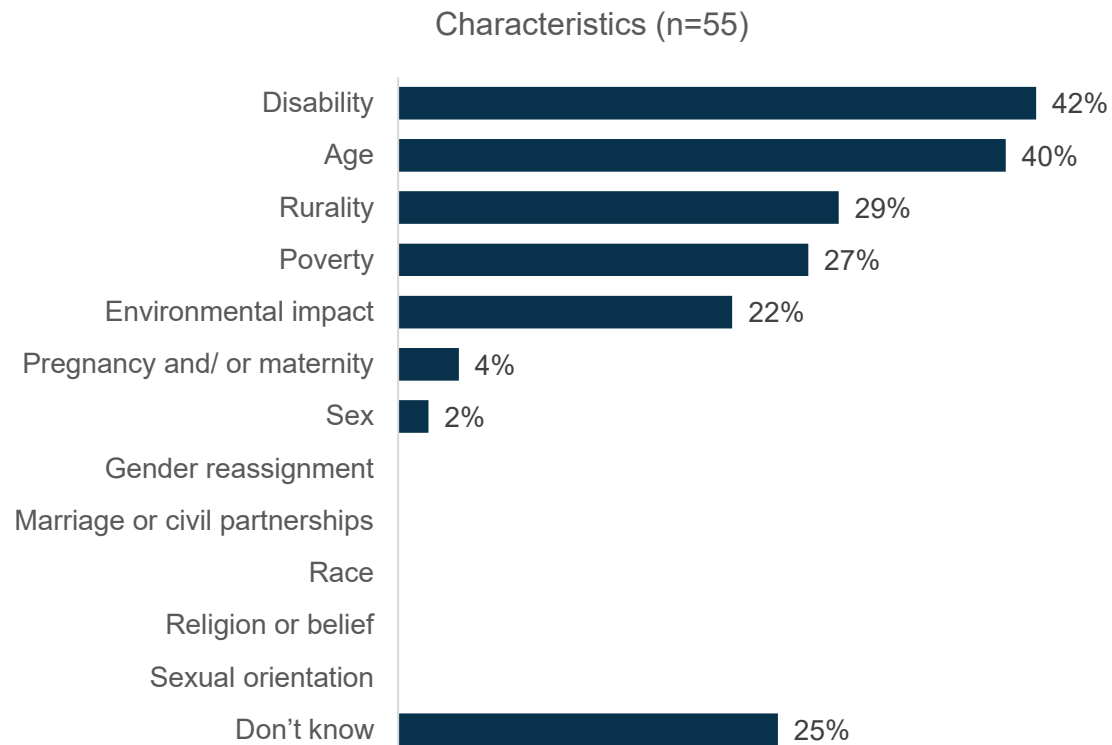
“Continued development south of the A27 will substantially cancel out measures to improve traffic flows.” (Males Fareham resident aged 75-85 who frequently travels by motor vehicle, public transport and active travel)

Includes comments made five times or more

If the strategy is adopted, what do you feel would be the main impacts on the local area and the people who live in, work in, travel through or visit Fareham and Gosport?

Groups impacted by the strategy

Respondents felt that characteristics that would be most negatively impacted by the strategy were age (40%) and disability (42%).



"People will stay at home more, particularly the elderly who have mobility issues." (Male Fareham resident aged 65-74 who frequently travels by motor vehicle and active travel)

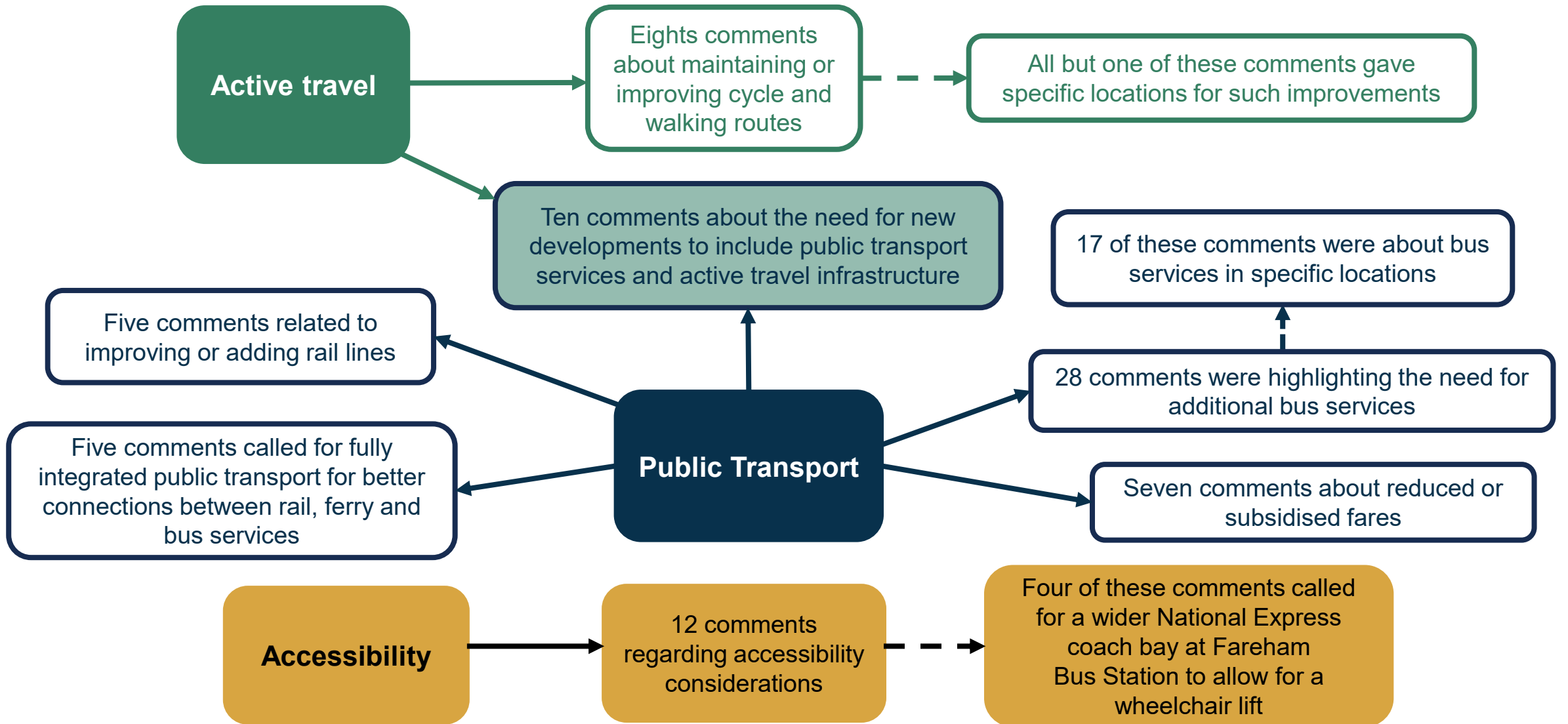
"Elderly people and people with disabilities are negatively impacted as they can not walk 20 minutes. There should be free bus pass for people over 69, school children and disabled people." (Female Gosport resident aged 55-64 who frequently travels by motor vehicle)

"Public transport remains expensive so people will still use cars." (Female Gosport resident aged 45-54 who frequently travels by motor vehicle and active travel)

"Ignoring rural areas." (Female Fareham resident aged 65-74 who frequently travels by motor vehicle and regularly travels by active travel)

Do you believe that the strategy would disproportionately negatively impact anyone based on any of the following characteristics?

What is missing from the strategy?



Is there anything missing from the strategy that you think should be included?

Includes comments made five times or more

Unstructured comments

19 emails were received

Three from organisations, one from a local councillor and one from a Local Authority, which have been shared in full with the strategy project team.

These included:

- seven suggestions for localised areas, five of these were for new or improved bus services
- three comments seeking more information about proposed bus routes in Gosport - linked to this were two additional comments objecting to the removal of on-street parking on Gordon Road to allow bus access
- two comments showing general support for the strategy
- two comments referring to improving active travel (for Haslar development and Fareham Quayside)
- two comments calling for secure cycle parking

Six social media comments were received in response to Hampshire County Council's Strategy consultation posts.

These included requests to:

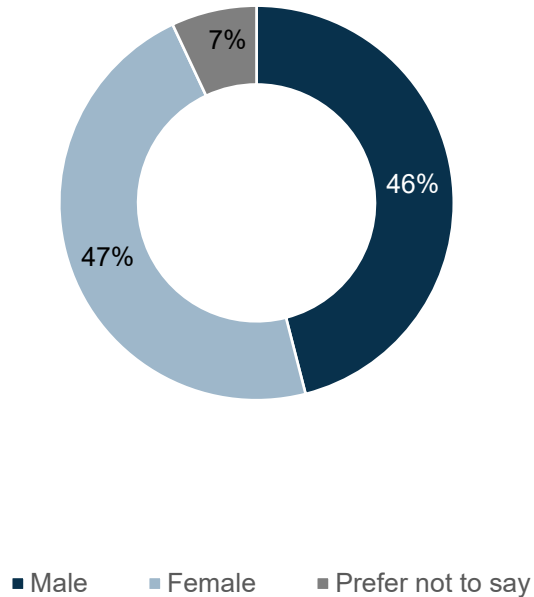
- reintroduce bus routes that have been stopped (including references to Funtley specifically)
- make pavement surfaces smooth and clean to support walking
- introduce trams

Respondent profile

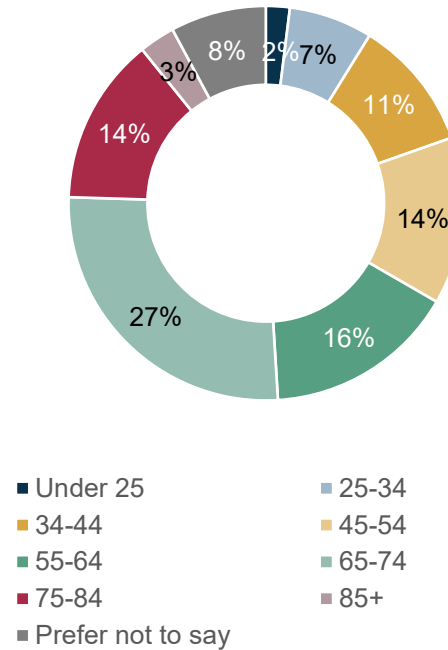
Respondent profile (1)

There were equal numbers of male and female respondents, 41% were aged between 34 and 64 and 27% were aged between 65 and 74. Most respondents did not have any children living in their household (77%).

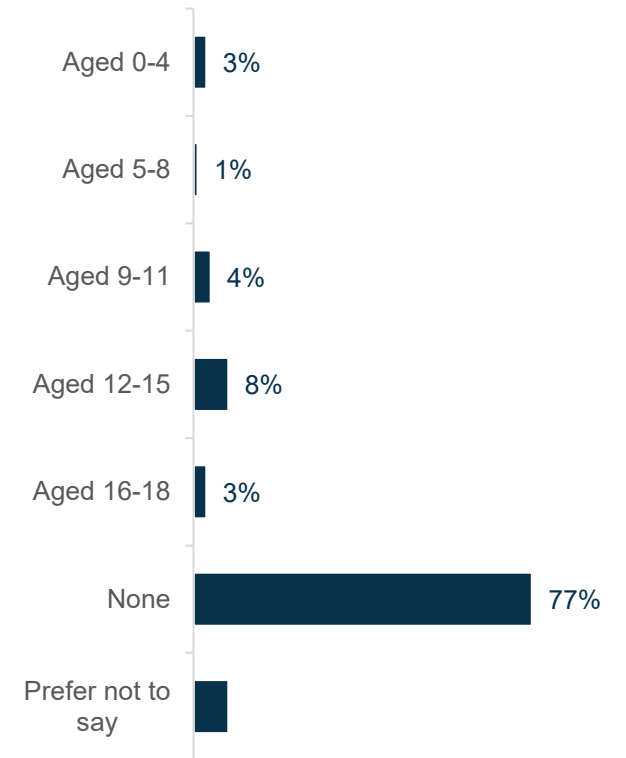
Gender (n=160)



Age (n=160)



Children in household (n=156)

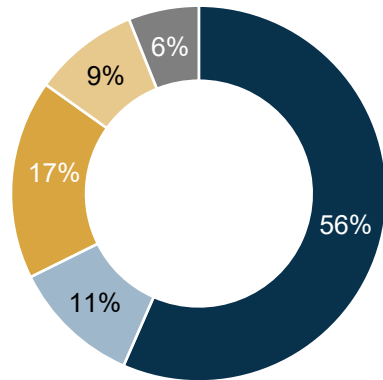


Which of the following best describes your gender? What is your age? Are there any children or young people up to the age of 18 living in your household (including yourself)?

Respondent profile (2)

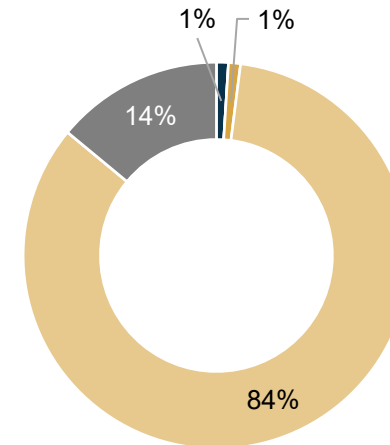
Around a quarter of respondents (26%) have a health condition affecting their mobility. 84% were of White ethnicity.

Mobility (n=159)



- None
- Yes but they do not limit my mobility
- Yes and they limit my mobility a little
- Yes and they limit my mobility a lot
- Prefer not to say

Ethnic group (n=159)



- Asian/ Asian British
- Black/ African/ Caribbean/ Black British
- Mixed/ multiple
- White
- Other
- Prefer not to say

Do you have any physical or mental health conditions or illnesses lasting or expected to last 12 months or more? What is your ethnic group?