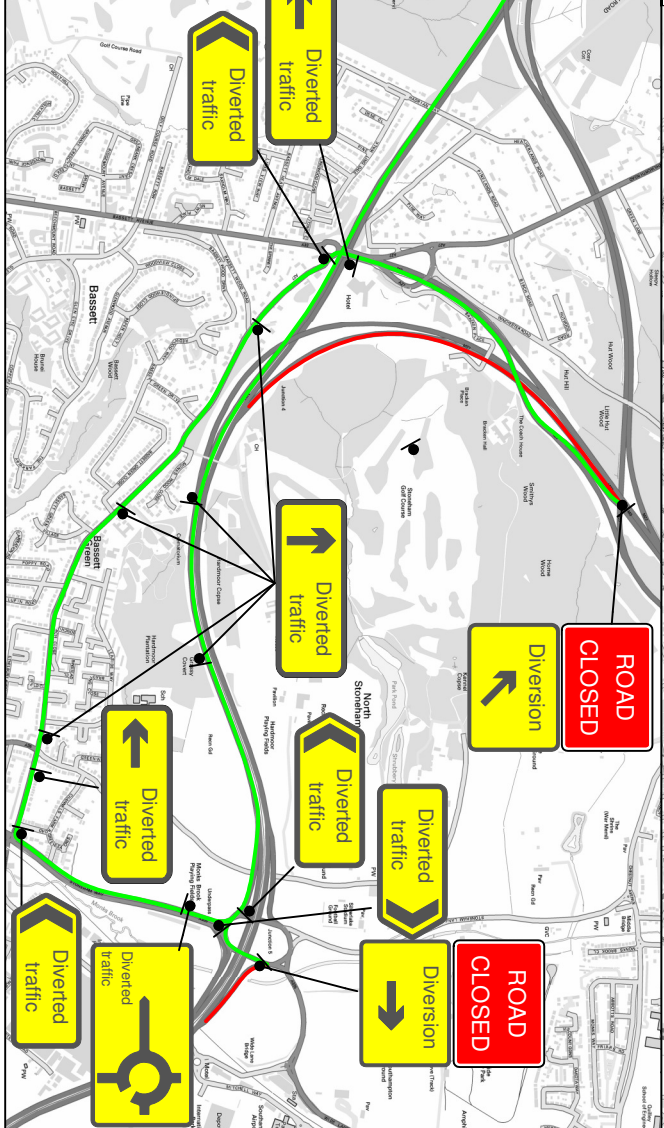
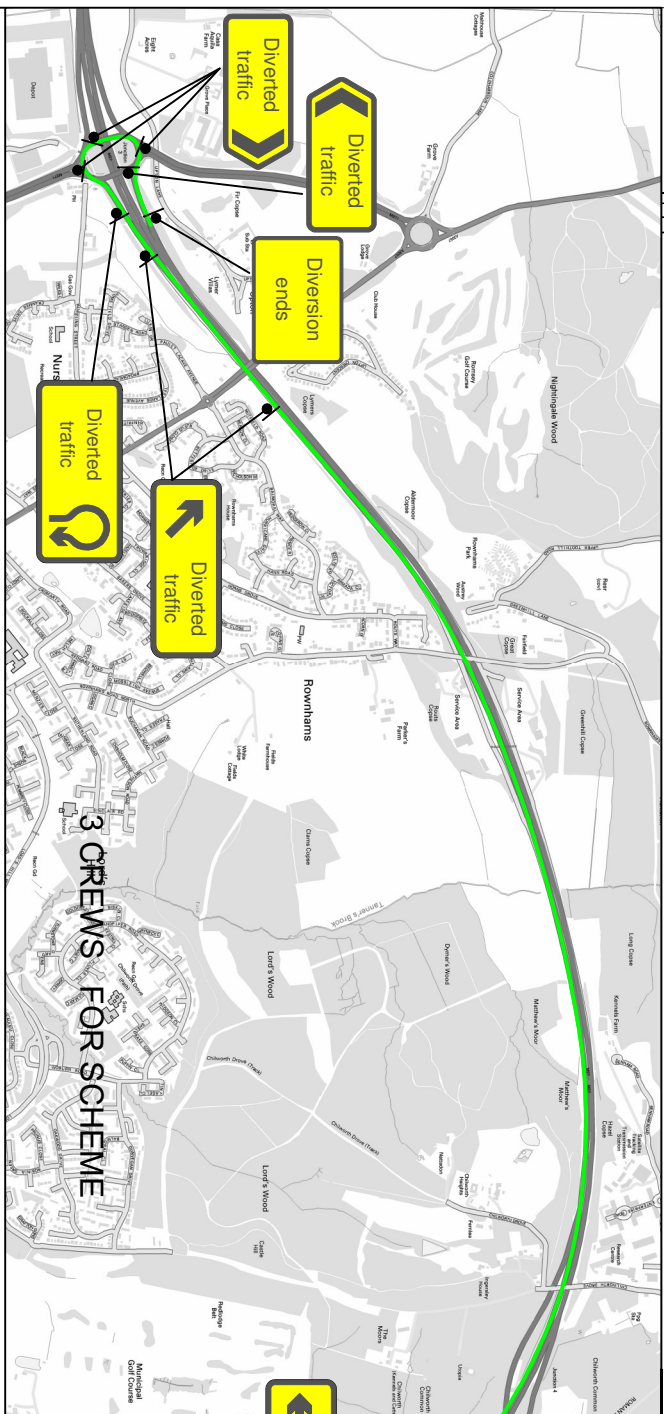
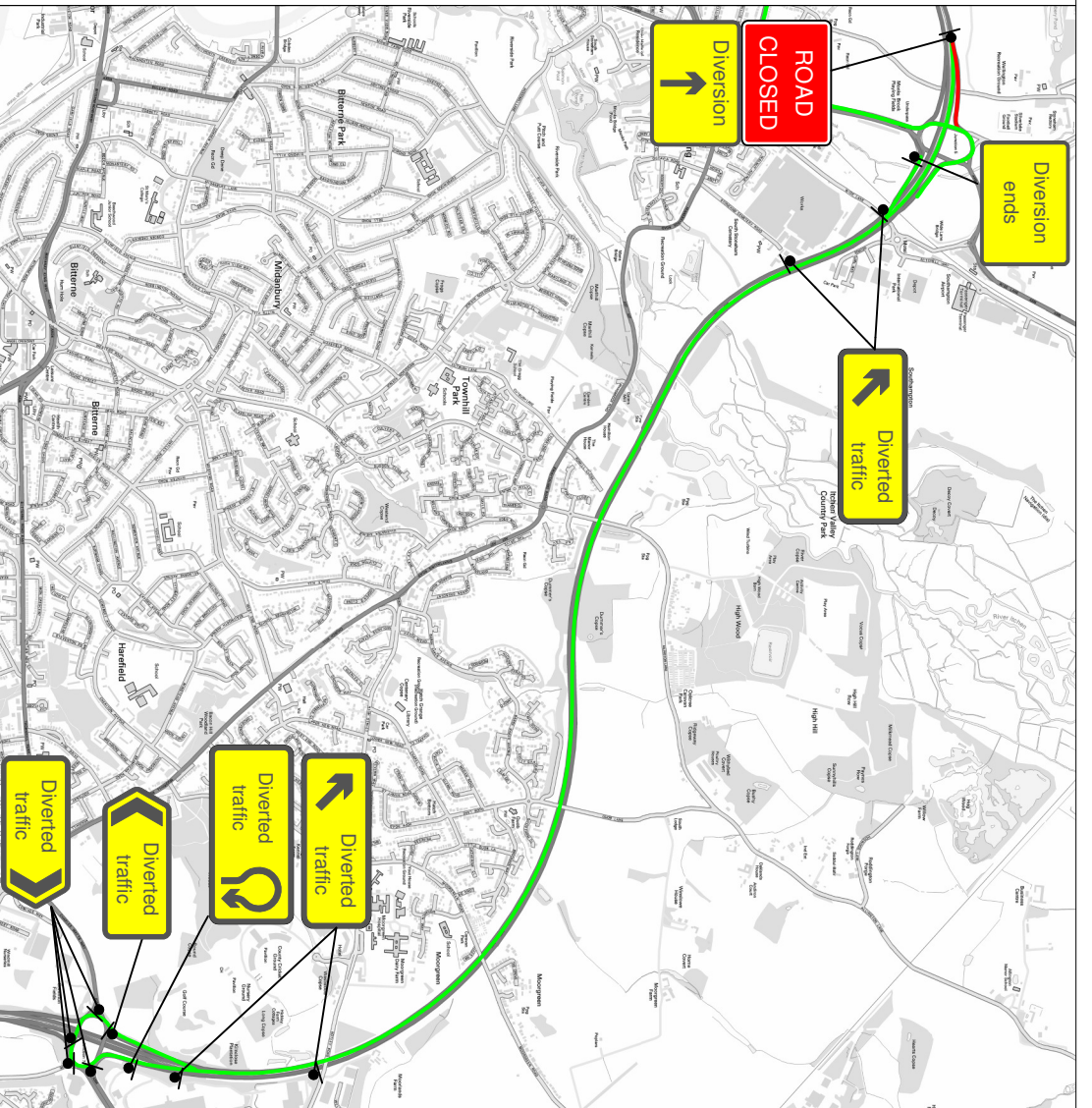
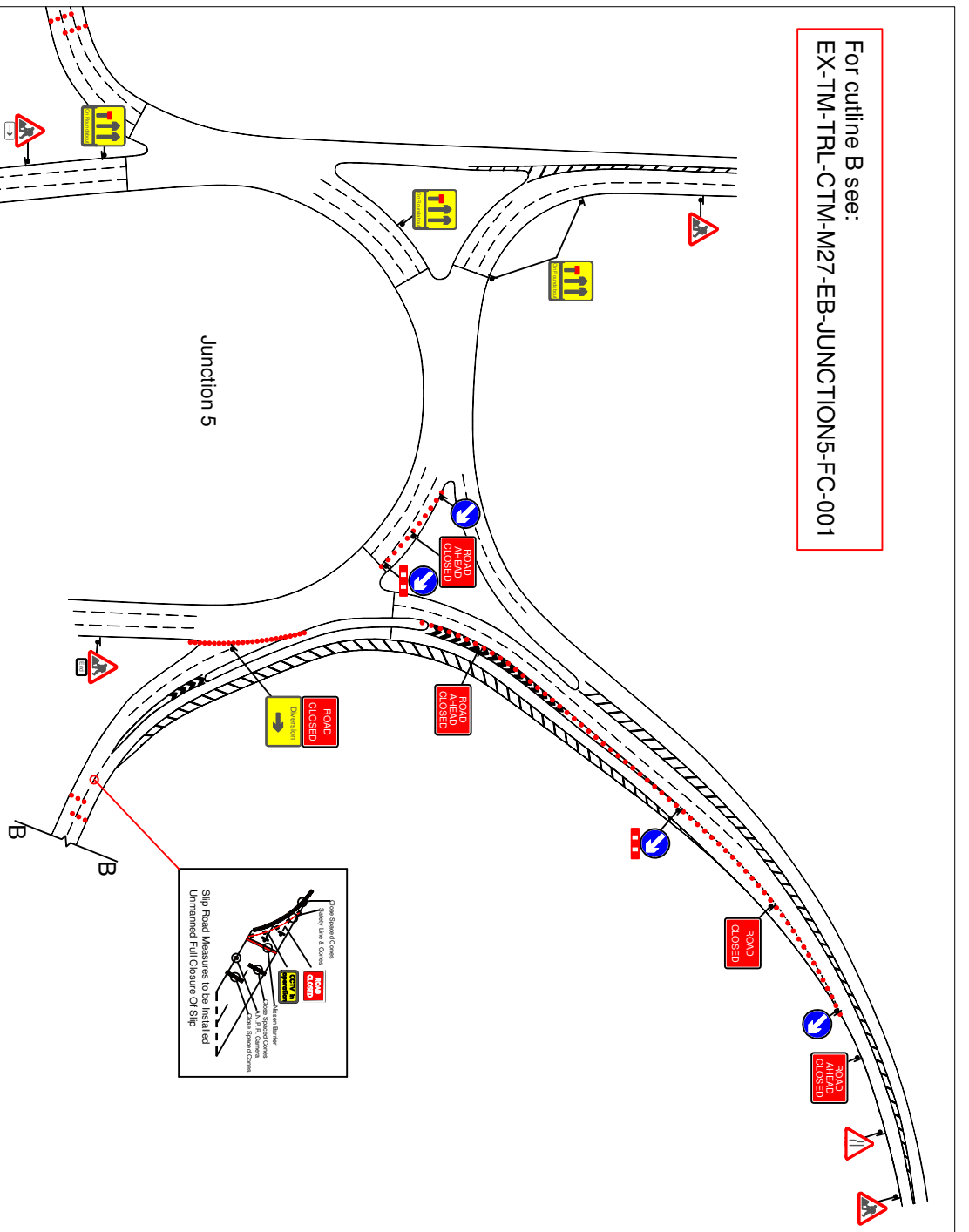




For outline B see:
EX-TM-TRL-CTM-M27-EB-JUNCTION5-FC-001



The information in this drawing may not be copied or used by a third party without the written consent of Chevron Traffic Management Ltd.
This layout is for installation by NRSWA, 12A, 12B, 12D qualified persons and may be modified to suit any and all road layout conditions at the time of installation.

Notes:

- All signs and cones to be in accordance with chapter 8-2009, the TSRGD and current IANs.
- Works access and egress locations to be agreed prior to Traffic Management Installation
- Safety zones are to be installed as required

Approved by: **APPROVED**
 By **Stuart Taylor** at 8:59 am, Jun 23, 2017

Drawn by:	L.Johnson	Scheme ref:	EX-TM-TRL
Checked by:	N.Godbeer	Drawing title:	M27 Eastbound - Junction 5 Full Closure
Date:	23.06.2017	Drawing No.:	EX-TM-TRL-CTM-M27-EB-JUNCTION5-FC-002
Scale:	Not to Scale	Contains OS data © Crown copyright and database right 2017	

