

The need for change

With reference to the proposed transport outcomes, the evidence suggests that it is critical for the Transport Plan to address the following issues:

CO₂ = Net zero ✘

If we carry on with existing policies and practice we will not achieve carbon neutrality from transport by 2050.



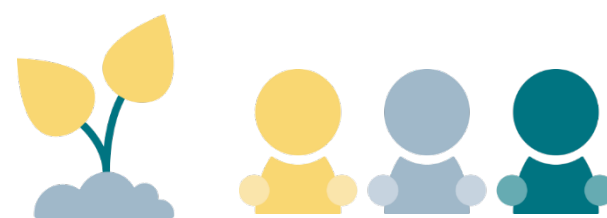
The cost of running and providing public transport means that in relative terms it is becoming more expensive for users.



The way we are travelling is leading to premature death as a result of low levels of physical activity, poor air quality, and road traffic collisions.



Land use planning is not as integrated with transport as it needs to be and is currently reinforcing car dependency.



We need to achieve a better balance between supporting economic growth and enhancing the quality of life for our residents, workers and visitors.



Alternative options to the car for walking and cycling and public transport are not of good enough quality to achieve our outcomes. But investment in these alone is not enough.

Our travel / mode choices are often not influenced by the full costs to society (e.g. in terms of congestion, air quality, road safety, health and the environment).