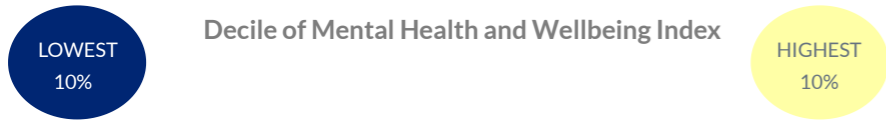
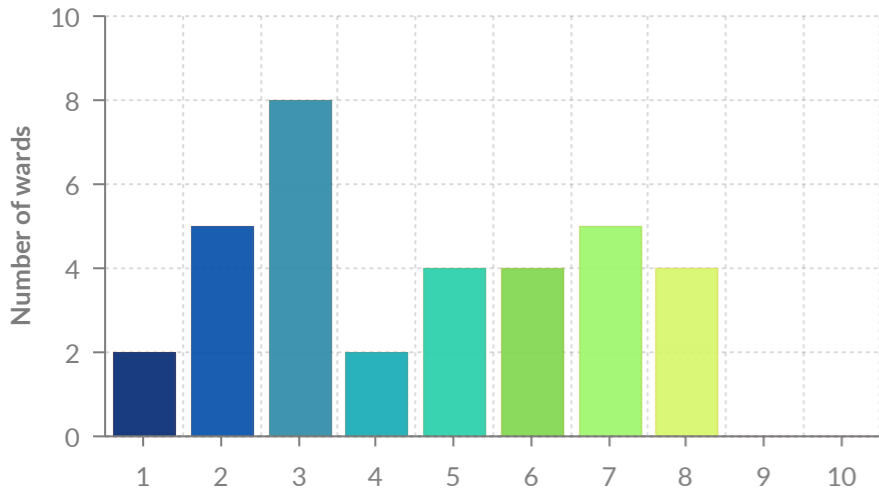


# MENTAL HEALTH AND WELLBEING INDEX - NEW FOREST SUMMARY

Number of wards in each decile of the Mental Health and Wellbeing Index

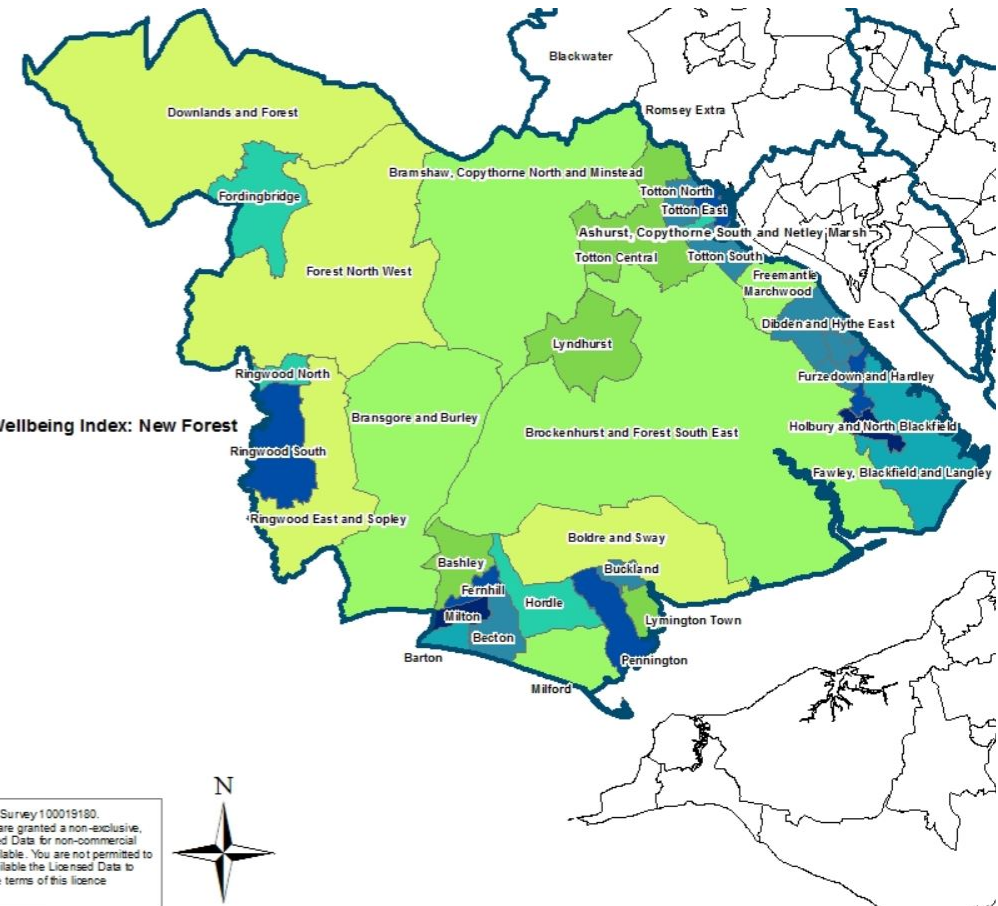


New Forest covers a large geographical area and 34 wards.

● The areas estimated to have lower mental health and wellbeing are Holbury & North Blackfield, Milton, Fernhill, Furzedown & Hardley, Pennington, Ringwood South and Totton East. These wards are amongst the lowest 20% in the county.

● The areas estimated to have higher mental health and wellbeing are Boldre & Sway, Downlands & Forest, Forest North West and Ringwood East & Sopley. These wards are amongst the highest 30% in the county.

	Education	Material Wellbeing	Health	Life Satisfaction	Strong & Stable Families	Social Capital	Enabling Infrastructure	Local Economy	Effective Public Services	Crime
Holbury & North Blackfield	Dark Blue	Dark Blue	Dark Blue	Dark Blue	Dark Blue	Dark Blue	Dark Blue	Dark Blue	Dark Blue	Dark Blue
Milton	Dark Blue	Dark Blue	Dark Blue	Dark Blue	Dark Blue	Dark Blue	Dark Blue	Dark Blue	Dark Blue	Dark Blue
Fernhill	Dark Blue	Dark Blue	Dark Blue	Dark Blue	Dark Blue	Dark Blue	Dark Blue	Dark Blue	Dark Blue	Dark Blue
Furzedown & Hardley	Dark Blue	Dark Blue	Dark Blue	Dark Blue	Dark Blue	Dark Blue	Dark Blue	Dark Blue	Dark Blue	Dark Blue
Pennington	Dark Blue	Dark Blue	Dark Blue	Dark Blue	Dark Blue	Dark Blue	Dark Blue	Dark Blue	Dark Blue	Dark Blue
Ringwood South	Dark Blue	Dark Blue	Dark Blue	Dark Blue	Dark Blue	Dark Blue	Dark Blue	Dark Blue	Dark Blue	Dark Blue
Totton East	Dark Blue	Dark Blue	Dark Blue	Dark Blue	Dark Blue	Dark Blue	Dark Blue	Dark Blue	Dark Blue	Dark Blue
Boldre & Sway	Light Blue	Light Blue	Light Blue	Light Blue	Light Blue	Light Blue	Light Blue	Light Blue	Light Blue	Light Blue
Downlands & Forest	Light Blue	Light Blue	Light Blue	Light Blue	Light Blue	Light Blue	Light Blue	Light Blue	Light Blue	Light Blue
Forest North West	Light Blue	Light Blue	Light Blue	Light Blue	Light Blue	Light Blue	Light Blue	Light Blue	Light Blue	Light Blue
Ringwood East & Sopley	Light Blue	Light Blue	Light Blue	Light Blue	Light Blue	Light Blue	Light Blue	Light Blue	Light Blue	Light Blue



© Crown copyright and database rights 2018 Ordnance Survey 100019180. Use of this data is subject to terms and conditions. You are granted a non-exclusive, royalty free, revocable licence solely to view the Licensed Data for non-commercial purposes for the period during which HCC makes it available. You are not permitted to copy, sub-licence, distribute, sell or otherwise make available the Licensed Data to third parties in any form. Third party rights to enforce the terms of this licence shall be reserved to Ordnance Survey.

