

## Hampshire Public Health PCN Pack Guidance

The PCN data packs have been developed in PowerBI and can be accessed via the web link provided in the email. These data reports have been developed to provide insight into your practice and network population and should be used with other data to inform a population health management to service and care provision.

The link will take you to the landing page for the PCN packs where access to all the topic based PCN reports can be found.

### Landing page

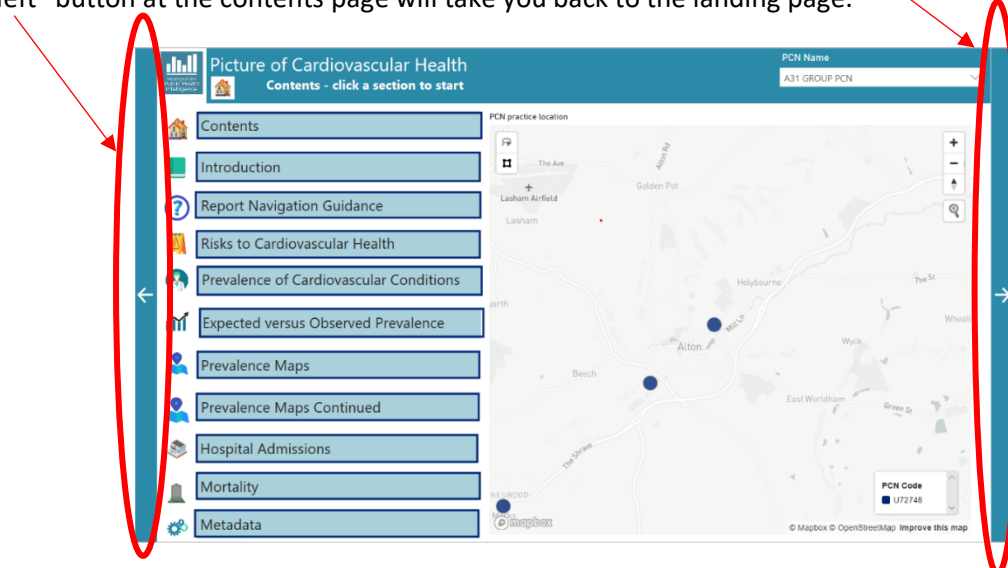


The first reports are now available which cover demographics, population insights, cardiovascular diseases and respiratory diseases. These are accessible via the report tiles on the landing page.

Please email any feedback or comments to the Public Health Intelligence Team, clicking on the “Question Mark”, will take you to a page where you will find there contact details.

### Report Contents Page

Clicking on one of the reports will take you to the report contents page (the report will open in a new window). The blue buttons at the side of the page will navigate you through the report. The “left” button at the contents page will take you back to the landing page.



Each page of the report contains a drop down to select the PCN that you require. The visuals on the page will then change to reflect the data of your chosen PCN. Hover your cursor over a visual to see exact figures on a chart. Each page also has a “home” button that takes you to the report contents page as well as a “Help” button (question mark) to take you to the guidance page.

### Introduction – what these packs will offer

Each report features an introduction page that explains the report and gives some useful insights into the data.

**Picture of Demography**  
Introduction: Primary Care Network Public Health Data Packs: Understanding your local population

These packs have been developed to provide insight into your practice and network population. We recognise that our health and wellbeing are shaped by a range of factors, individual lifestyle factors, social and community networks and general socio-economic, cultural and environmental conditions. It is hard to be precise about how much each of these factors contributes to our health, but the evidence is clear that the wider determinants of health have the most impact, followed by our lifestyles and health behaviours, and then the health and care system. There is also now greater recognition of the importance of the communities we live and work in, and the social networks we belong to.

The King's Fund definition of population health[1] suggest a focus in four broad areas shown in the diagram. They describe this approach as a 'population health system' in which the four areas are inter-connected, and action is co-ordinated across them rather than within each in isolation. These packs begin to provide data and intelligence to help understand your population health system within these four broad areas.

**Demographics report** provides context to the local population you serve and presents data describing some of the wider determinants of health. It provides answers to questions such as, how large is the population? What is the population age/sex structure, is it old/young compared to national data? What is their life expectancy and how long do they live in good health for? How ethnically diverse are the population?

Further information on the methodologies adopted and metadata for the different data sets are available on the data notes page.

Comparator data, England or STP, have been presented where possible however data access restrictions or lack of published data mean that it has not always been possible to present comparisons. Importantly trend data and variation within PCNs are presented and this should be the focus to identify priority areas for population health and wellbeing.

[1] [https://www.kingsfund.org.uk/publications/what-does-improving-population-health-mean?gclid=EAIaIQobChMIse\\_7rezd5wVlBvCh3z2QBWEAYAAAgKQBPD\\_BwE](https://www.kingsfund.org.uk/publications/what-does-improving-population-health-mean?gclid=EAIaIQobChMIse_7rezd5wVlBvCh3z2QBWEAYAAAgKQBPD_BwE)

### Guidance page - how to use and navigate around the reports

Each report will have a guidance page that contains information on how to best navigate the report. It also explains how to use the visuals and access tooltips for additional information.

**Picture of Demography**  
Report navigation and guidance

PCN Name: A31 GROUP PCN

Practice Name: All

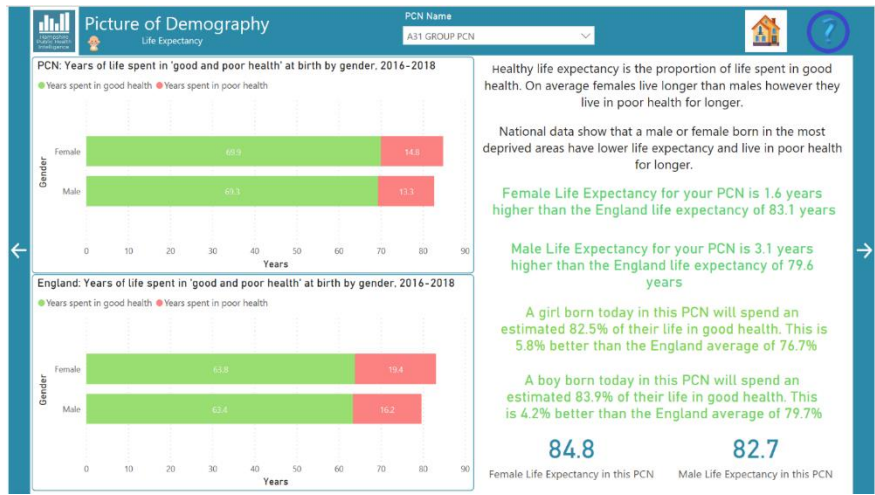
Of the remaining 3.15%: 96.85% of residents in this PCN are White

Your PCN is less diverse than the National Average

Ethnicity	PCN Resident Count	PCN %	Regional %	Deviation from Regional Average	National %	Deviation from National Average
White	32869	96.85%	95.03%	1.82%	85.42%	11.43%
Black	142	0.41%	2.03%	-1.62%	7.82%	-7.41%
Black African/Caribbean/Black British	112	0.32%	2.63%	-2.31%	2.48%	-2.16%
Mixed/Asian ethnic group	369	1.07%	1.27%	-0.20%	2.23%	-1.16%
Other ethnic group	81	0.24%	0.03%	0.20%	1.03%	-0.80%

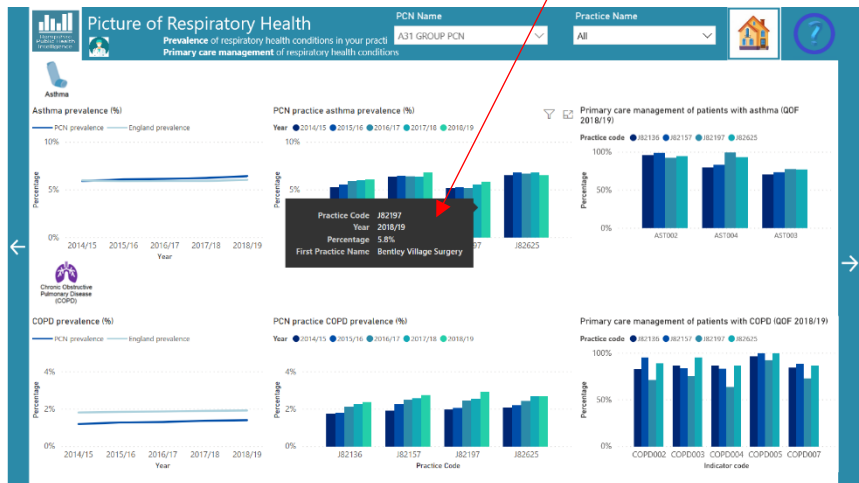
### Dynamic text

The demography report contains dynamic text. This is text that will change depending on what parameters have been selected. The text will then also change colour (using a RAG rating) depending on the data for that PCN and how it compares to the comparator area.



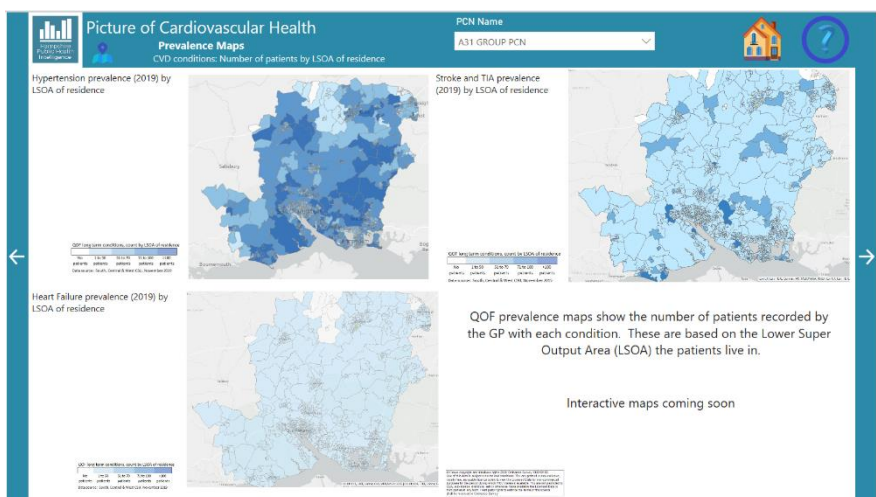
**Primary care management – PCN and GP trend data**

Hovering over these charts will reveal a “tooltip”. Tooltips provide additional information about the charts including the full description of each indicator.



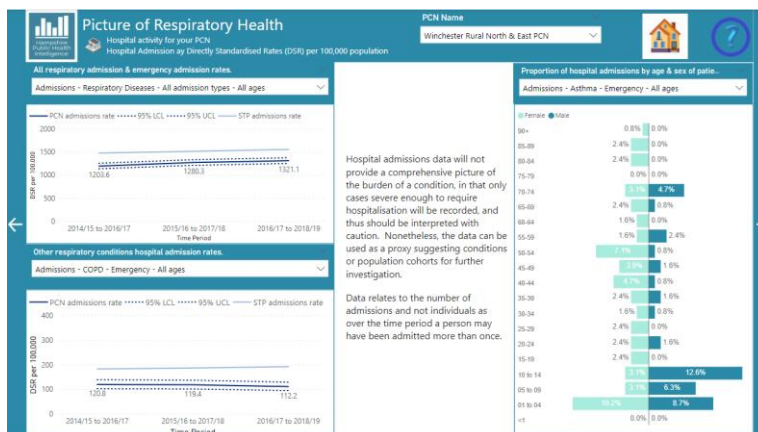
**Primary care condition maps**

There are several maps spread throughout each report. Currently these maps are not interactive and are static pictures. Interactive maps will be added soon.



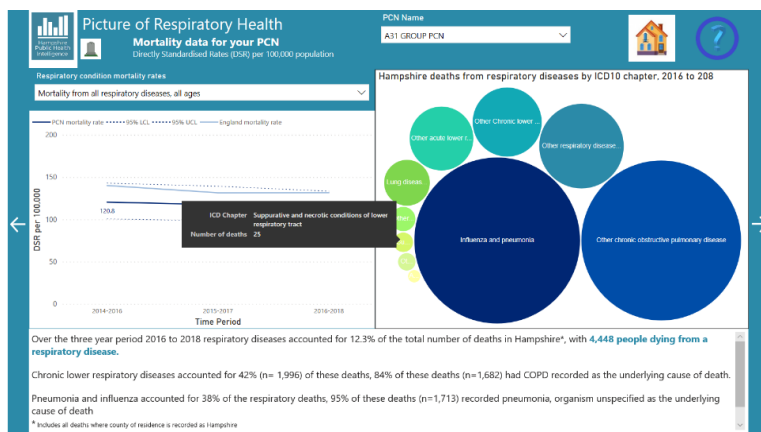
### Hospital activity data – condition specific – choose PCN and indicator

For these visuals, the confidence intervals have been added in (dashed lines) alongside an STP figure for comparison.



### Mortality data - condition specific – choose PCN and indicator

In order to see the data behind the bubble chart visual hover the mouse over each of the bubbles to reveal the complete text and see the corresponding data



### Data and methodology page

Each report contains a data and methodology page at the end of the report. Here you can find details of what data has been used and where it has come from. The “right” blue arrow will take you back to the report contents page.

