

# COVID-19 Weekly Update – 23<sup>rd</sup> November 2020

*Data correct as of 23<sup>rd</sup> November 2020 but subject to revision*

**Compiled and published by Hampshire Public Health**



**Hampshire**  
County Council

# This report provides information on the COVID-19 pandemic in Hampshire and includes:

- COVID -19 infections – the total numbers of cases, rates within Hampshire’s districts and overall picture across England
- Deaths - total deaths, which also includes those extra deaths above the number we would normally expect in Hampshire, over recent months
- Hospital admissions – presents the number of patients in Hospital with confirmed COVID-19 in England by NHS Region and number of patients in mechanical ventilation beds in England by NHS Region



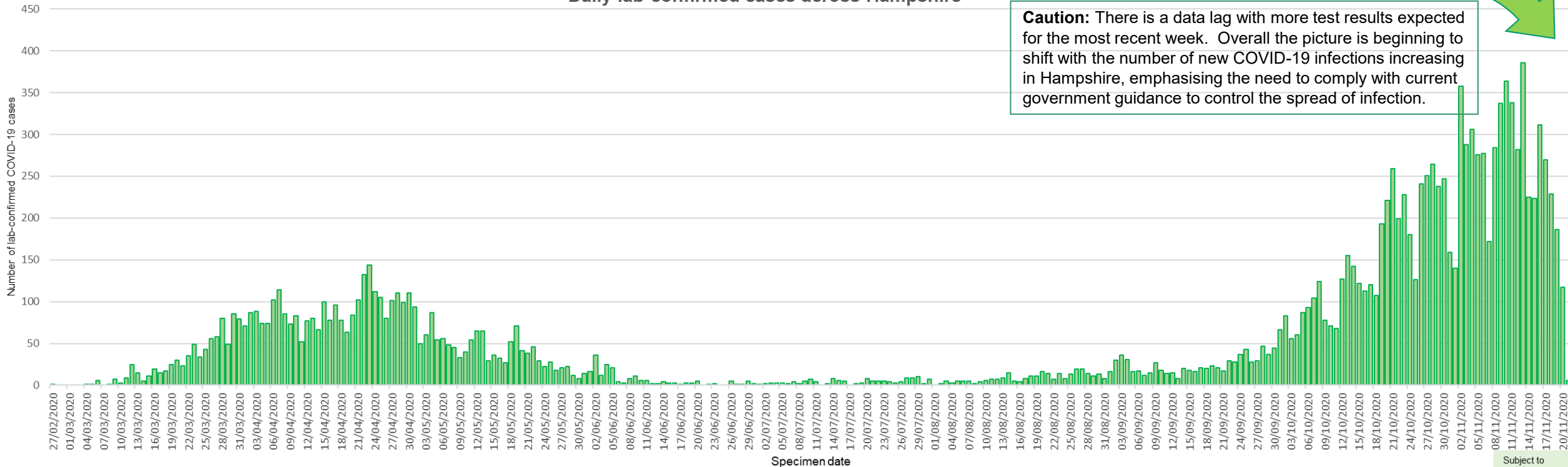
# Infections – daily COVID-19 cases in Hampshire showing how the epidemic has progressed over time – the ‘epidemic curve’

During wave 1 only Pillar 1 testing was available, this included people admitted to hospital and later people living or working in a health or care environment. Widespread community testing (pillar 2) began on 14th July 2020. Due to these different testing strategies it is therefore not possible to directly compare the number and rates of positive tests between wave 1 and wave 2.



## Data only includes those cases which have tested positive

Daily lab-confirmed cases across Hampshire



Source: [PHE dashboard](#) (Last updated on 22<sup>nd</sup> November 2020)

The data now includes all cases, those which have been tested by NHS/PHE laboratories and by the Government's commercial testing partners

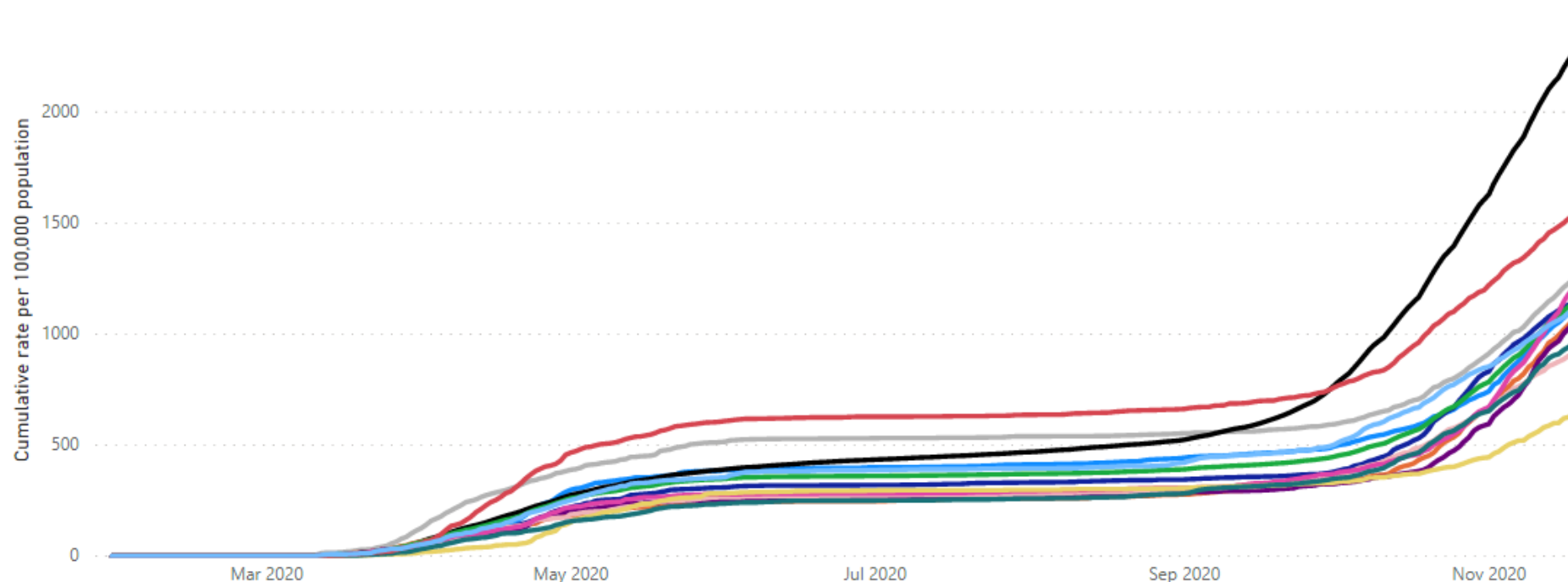


# Infection rates – Total cases per 100,000 people across Hampshire Districts

- The trend in the total figures shows that the infection is slowly rising across Hampshire.
- The highest infection rate has been in the Rushmoor district, where it is currently lower than the average infection rates for England.

COVID-19 - Cumulative case rate per 100,000 population: Hampshire districts and England

Area ● Basingstoke and Deane ● East Hampshire ● Eastleigh ● England ● Fareham ● Gosport ● Hampshire ● Hart ● Havant ● Isle of Wight ● New Forest ● Rushmoor ● Test Valley



Most Recent Rates (18th November 2020)

Area	Cumulative rate per 100,000
Basingstoke and Deane	1,242.48
East Hampshire	1,114.40
Eastleigh	1,145.35
England	2,267.59
Fareham	1,065.96
Gosport	1,047.88
Hampshire	1,140.94
Hart	910.65
Havant	1,206.62
Isle of Wight	639.06
New Forest	958.99
Rushmoor	1,527.50
Test Valley	1,109.70
Winchester	1,265.43

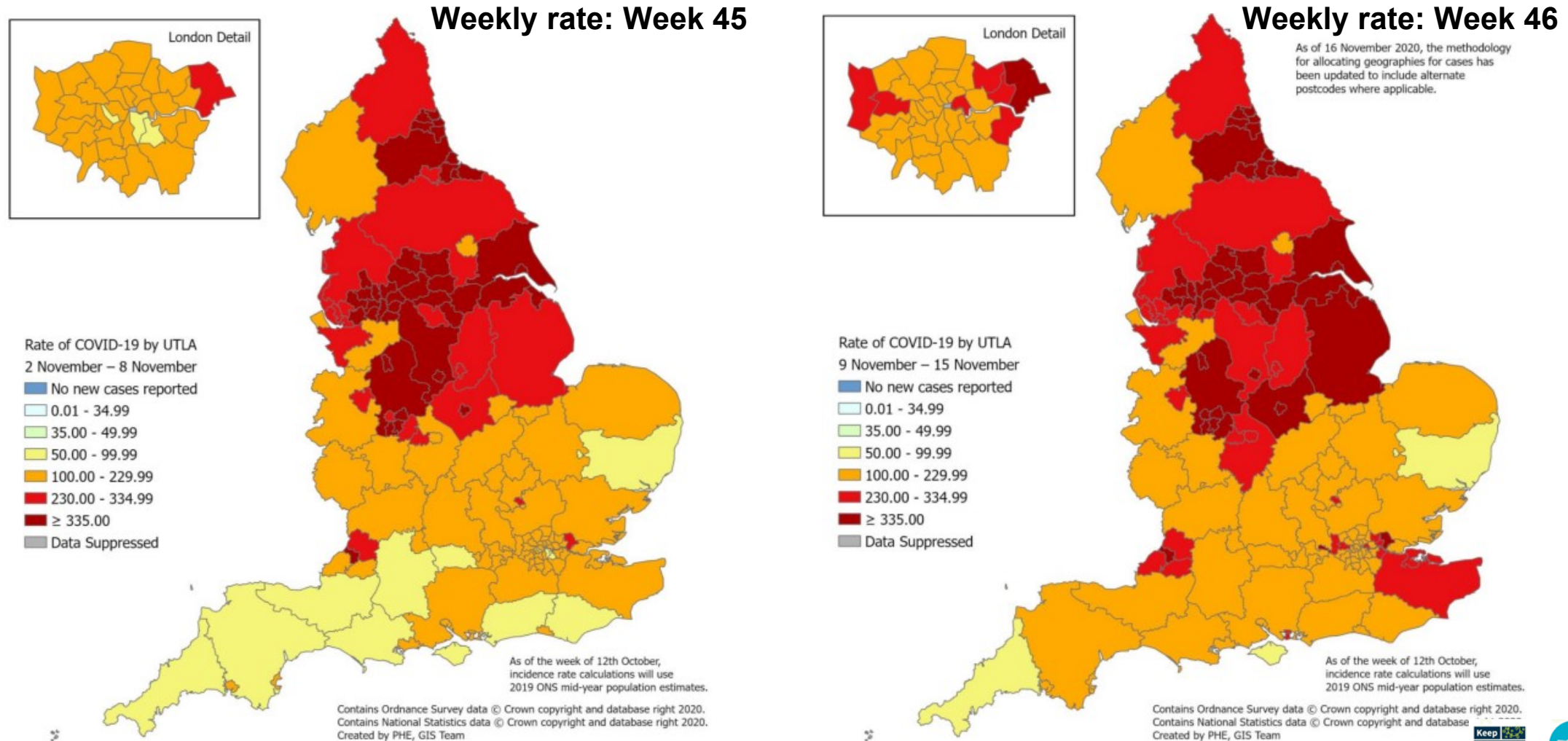
Timeline of key national interventions and policies	16/03/20: Social distancing 24/03/20: Stay at home measures	13/05/20: Govt. stay at home measure relaxed 15/06/20: Opening of none essential retail & opening of pubs and restaurants. Some foreign travel allowed from July August: Eat out to help out scheme	Sept: Schools and colleges reopen 09/09/20: Hands, Face, Space 14/09/20: Rule of 6	05/11/20: Stay at home measures
	'Stay home, protect the NHS, save lives'	'Stay alert, control the virus, save lives'		'Stay home, protect the NHS, save lives'



# Infections- number of cases of COVID-19 per 100,000 people across England

The epidemic is now no longer localised and is growing in all regions.

Detections of COVID-19 cases in England remained high in week 46 and similar to the previous week. Overall positivity rates for Pillar 1 increased whilst the positivity rate for Pillar 2 decreased. Incidence and Pillar 1 positivity rates remain highest in the North and Midlands regions of England. Pillar 2 positivity rates are highest in Yorkshire and Humber, the North East, the midlands and London. There has been a significant decline in both case detections and Pillar 2 positivity rates in the North West since week 44. By age group, cases rates were highest in the 20 to 29 year olds. Positivity rates were highest in the 80+ year olds tested through Pillar 1 (NHS and PHE testing) and in the 10 to 19 year olds tested through Pillar 2 (community testing).



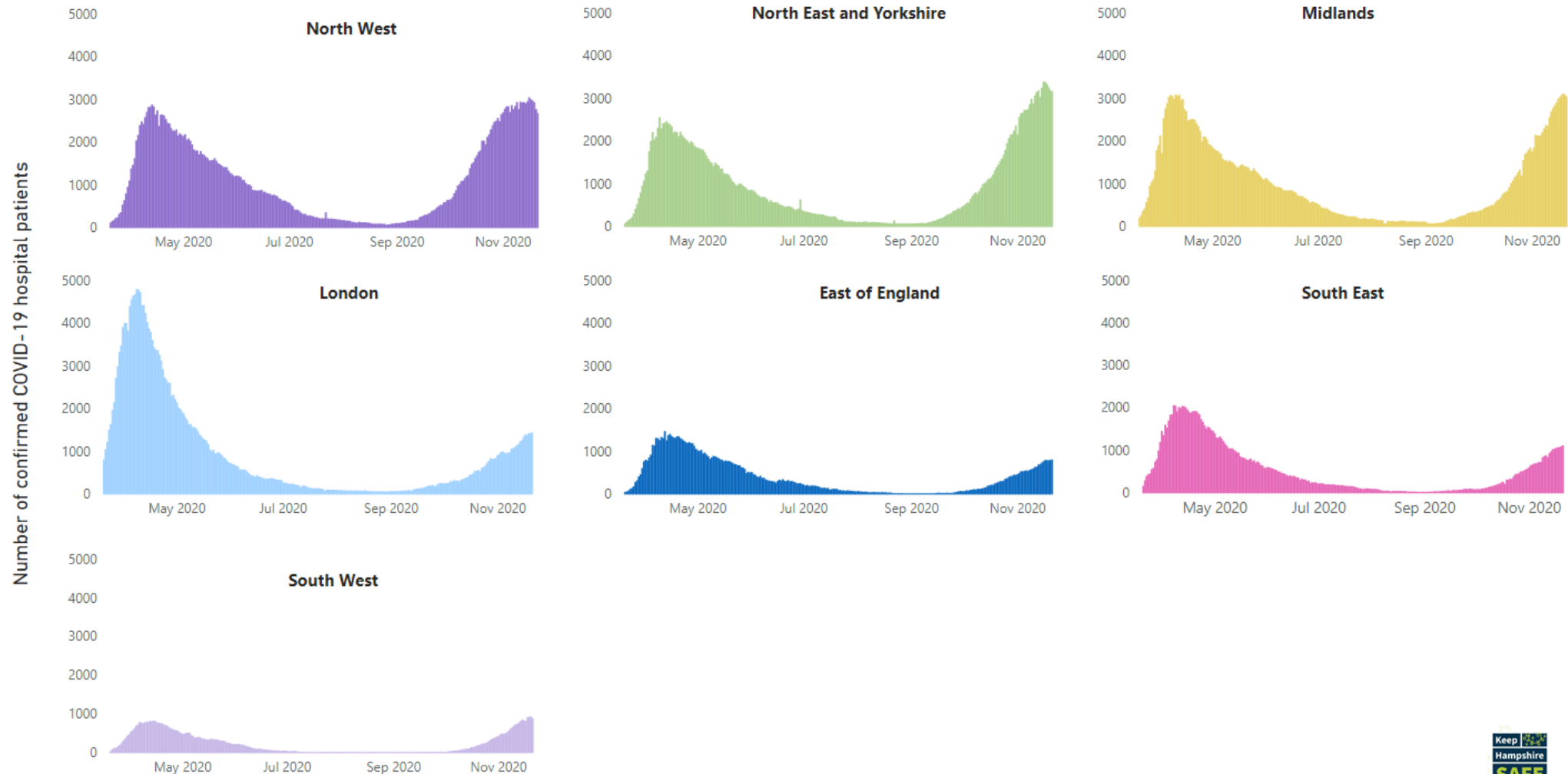
Source: [Weekly Coronavirus Disease 2019 & Influenza \(COVID-19\) Surveillance Report](#)



# Patients in Hospital with confirmed COVID-19 in England by NHS Region

The number of patients with confirmed COVID-19 is increasing across all regions. The South East NHS Region currently has the second lowest number of patients in hospital with confirmed COVID-19, out of all NHS regions. As of the 21<sup>st</sup> of November 2020 there are 902 patients in South East NHS Region hospitals with confirmed COVID-19.

Patients in hospital with COVID-19 in England by NHS Region



# Patients in mechanical ventilation beds in England by NHS Region

The number of patients in mechanical ventilation beds is increasing across all regions. The South East NHS Region has the lowest number of patients currently on mechanical ventilation hospital beds. As of the 21<sup>st</sup> November 2020, the number of patients on mechanical ventilation beds in the South East NHS Region is 64.

Patients in mechanical ventilation beds in England by NHS Region

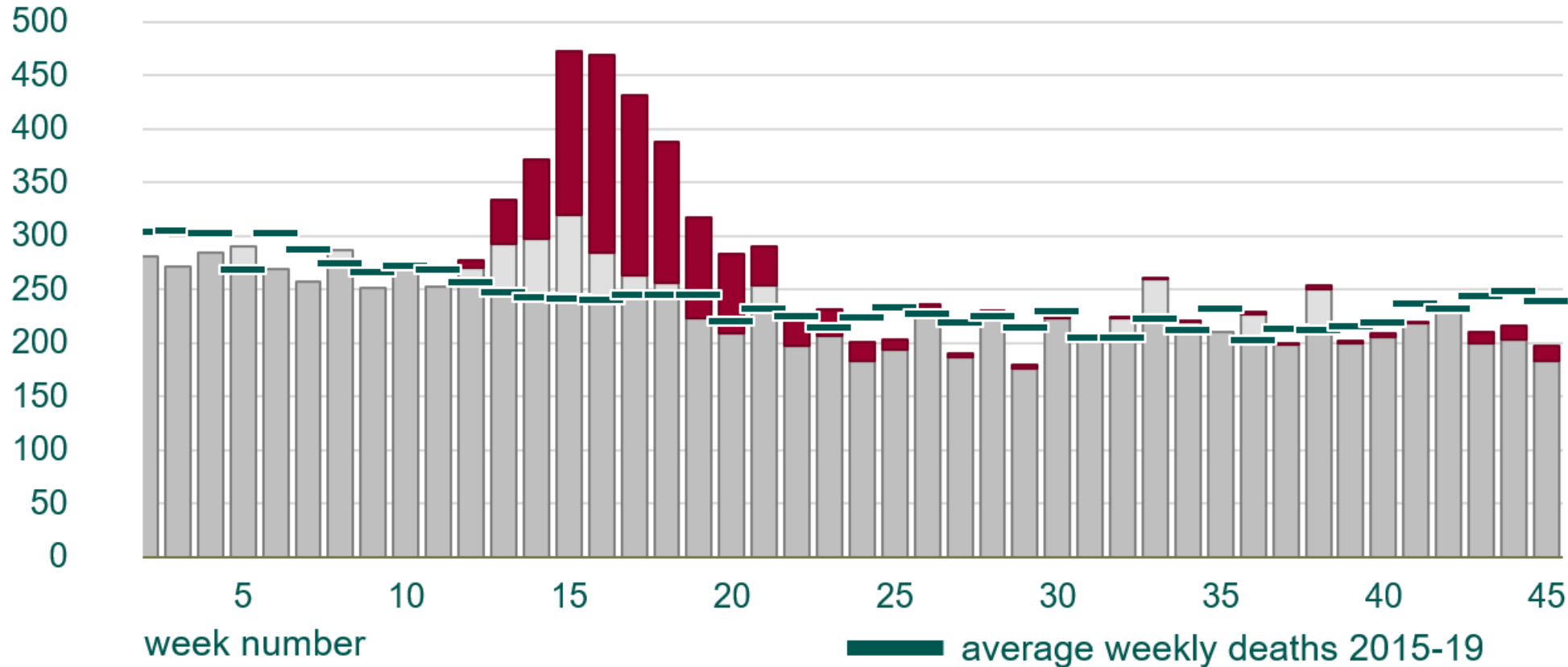


# Deaths

Deaths due to COVID-19 continue to be low - the latest weekly figure is **14**.  
Excess (extra) deaths are below the number we would usually see at this time of year.

Total number of COVID-19 deaths  
**1,120**

All deaths in 2020 by week, with proportion where COVID-19 is mentioned



COVID-19 mentioned on the death certificate

Excess deaths continue to be lower than the 5-year weekly average, for this time of year.

COVID-19 not mentioned

Estimated excess deaths  
**1,200**

ONS - Deaths registered weekly in England and Wales, provisional

Source: PHE ONS- Deaths registered weekly in England and Wales, provisional

