

# COVID-19 Weekly Update – 21<sup>st</sup> August 2020

*Data correct as of 21<sup>st</sup> August but subject to revision*

**Compiled and published by Hampshire Public Health**

**21<sup>st</sup> August 2020**



**Hampshire**  
County Council

# This report provides information on the COVID-19 pandemic in Hampshire and includes:

- COVID -19 infections – the total numbers of cases, rates within Hampshire's districts and overall picture across England
- Deaths - total deaths, which also includes those extra deaths above the number we would normally expect in Hampshire, over recent months

**STAY ALERT › CONTROL THE VIRUS › SAVE LIVES**



**Hampshire**  
County Council

# Infections – daily COVID-19 cases in Hampshire showing how the epidemic has progressed over time – the ‘epidemic curve’

Overall numbers of those infected with COVID-19 are decreasing, with occasional cases now occurring.

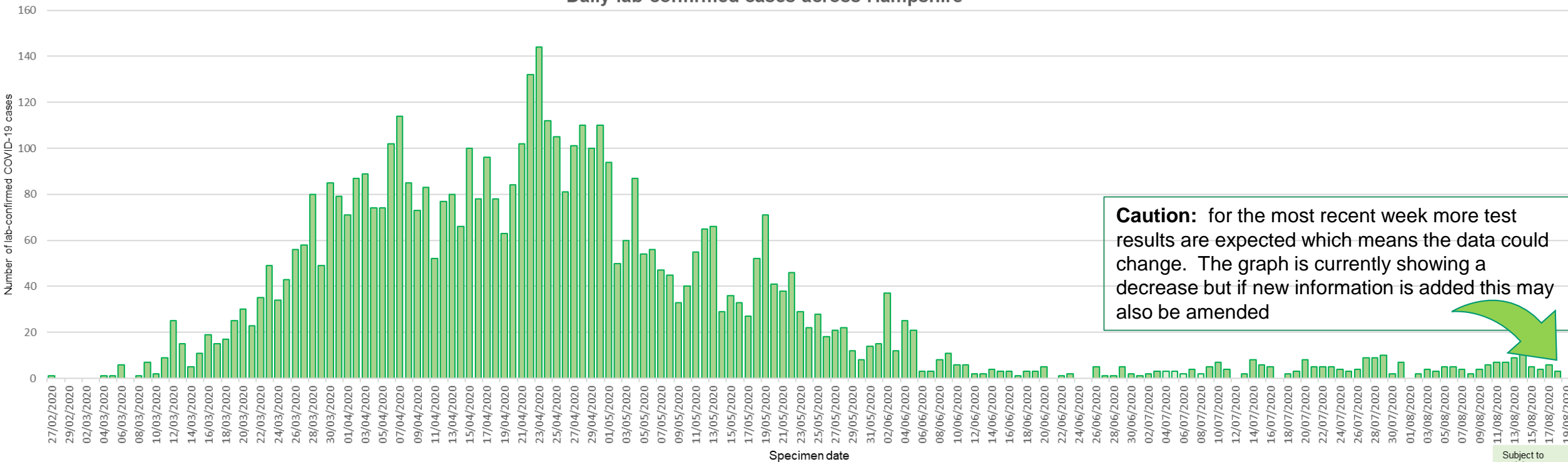


Total number of COVID-19 cases

# 5,217

Data only includes those cases which have tested positive

Daily lab-confirmed cases across Hampshire



Source: [PHE dashboard](#) (Last updated on 20<sup>th</sup> August 2020)

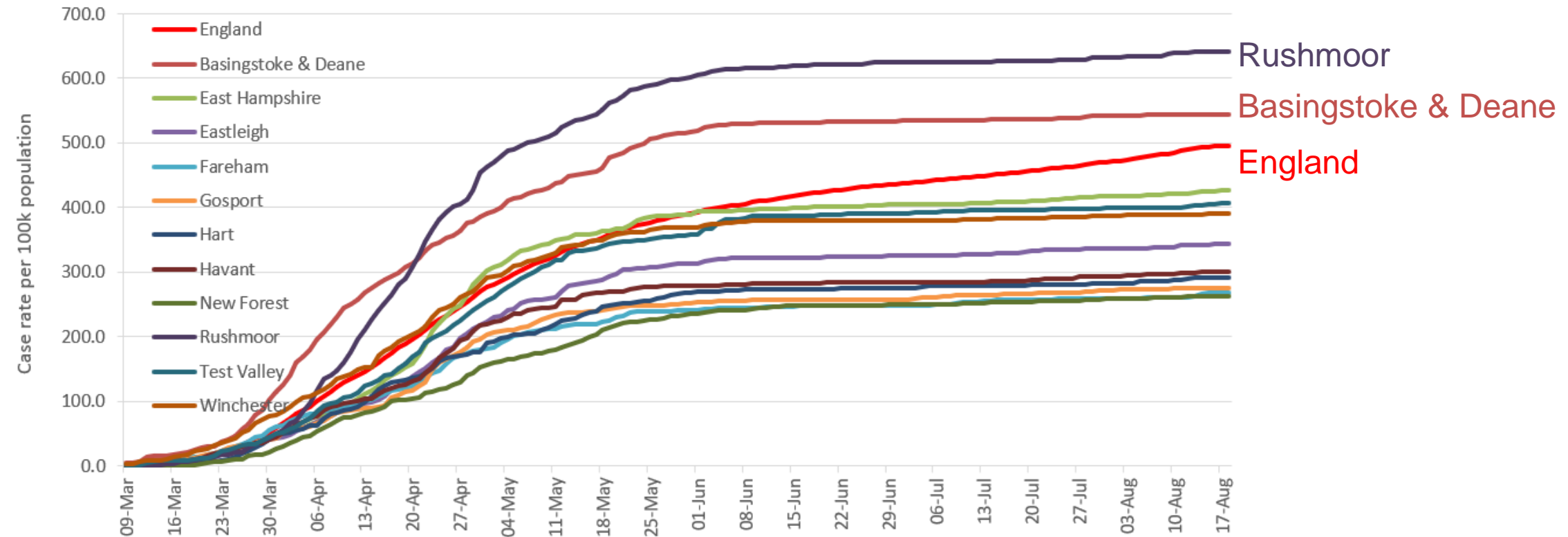
The data now includes all cases, those which have been tested by NHS/PHE laboratories and by the Government's commercial testing partners

STAY ALERT ▶ CONTROL THE VIRUS ▶ SAVE LIVES

# Infection rates – Total cases per 100,000 people across Hampshire Districts

- The trend in the total figures shows that the infection is levelling off across Hampshire
- The highest infection rates have been in Rushmoor and Basingstoke & Deane districts, where these have been greater than the average infection rates for England

COVID 19 - Case rate per 100k population: Hampshire districts and England



Source: Data.gov COVID-19 dashboard & ONS MYE 2018

**Social distancing**

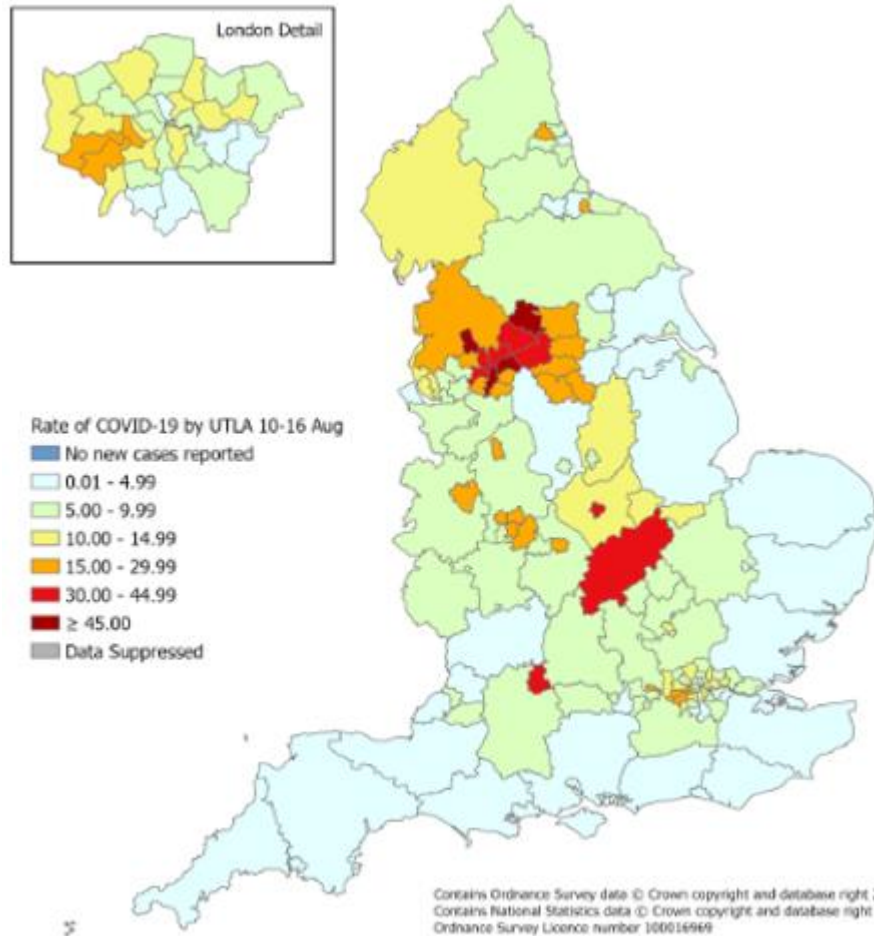
**Govt. stay at home measures**      **Govt. stay at home measures relaxed**



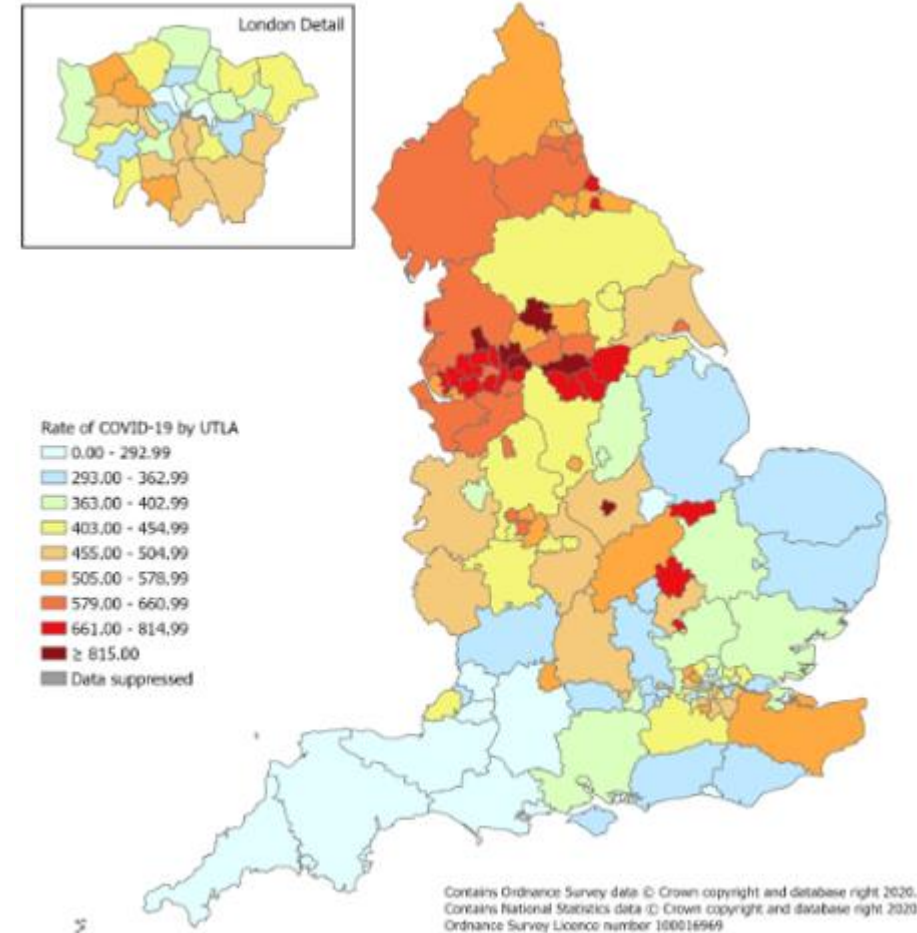
# Infections- number of cases of COVID-19 per 100,000 people across England

The following local authorities have been included in the watchlist following the weekly Local Action Committee meeting: Oldham, Blackburn with Darwen, Pendle, Leicester, Bradford, Manchester, Rochdale, Hyndburn, Calderdale, Preston, Burnley, Kirklees, Salford, Tameside, Bury, Trafford, Bolton, Stockport, Northampton, Birmingham, Luton, Swindon, Newark and Sherwood, Sandwell, Oadby and Wigston, Slough, Wakefield, Peterborough.

## Weekly rate, week 34



## Cumulative rate



**STAY ALERT ▶ CONTROL THE VIRUS ▶ SAVE LIVES**

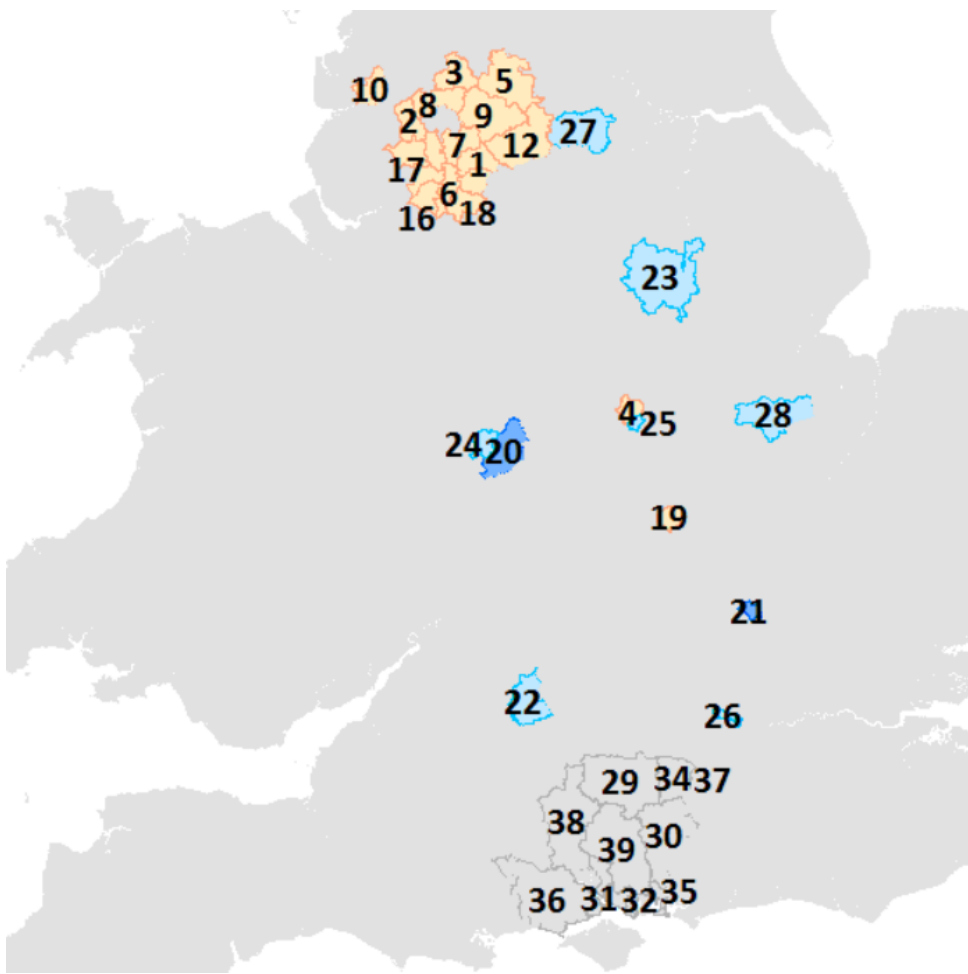
Source: [Weekly Coronavirus Disease 2019 \(COVID-19\) Surveillance Report](#)

# Areas on the Coronavirus Watchlist

## Level of support required by local authority in England – Updated 21<sup>st</sup> August 2020

Area of Intervention
  Area of Concern
  Enhanced Support

Hampshire Districts (for location reference only)



Number	District Name
1	Oldham
2	Blackburn with Darwen
3	Pendle
4	Leicester
5	Bradford
6	Manchester
7	Rochdale
8	Hyndburn
9	Calderdale
10	Preston
11	Burnley
12	Kirklees
13	Salford
14	Tameside
15	Bury
16	Trafford
17	Bolton
18	Stockport
19	Northampton
20	Birmingham
21	Luton
22	Swindon
23	Newark and Sherwood
24	Sandwell
25	Oadby and Wigston
26	Slough
27	Wakefield
28	Peterborough
29	Basingstoke and Deane
30	East Hampshire
31	Eastleigh
32	Fareham
33	Gosport
34	Hart
35	Havant
36	New Forest
37	Rushmoor
38	Test Valley
39	Winchester

The incidence per 100,000 Hampshire population (weekly) is 3.7. The trend is increasing.


Table 1: Local Authority Watchlist areas

Lower Tier Local Authority	Individuals tested per day per 100,000 population (7 day moving average)	Trend	Incidence per 100,000 population (weekly)	Trend	Contain Framework Watchlist Status - week beginning 17 August 2020	Change in Watchlist Status from previous week	Area with household mixing prohibited?
Oldham*	215.7	↓	103.1	↑	Intervention	→	YES
Blackburn with Darwen**	204.9	↓	95.3	↑	Intervention	→	YES
Pendle*	257.6	↓	75.5	↓	Intervention	→	YES
Leicester	235.8	↑	60.5	↓	Intervention	→	YES
Bradford*	130.7	↓	54.7	↓	Intervention	→	YES
Manchester*	153.5	↓	47.3	↑	Intervention	→	YES
Rochdale*	200.6	↓	42.7	↑	Intervention	→	YES
Hyndburn*	150.6	↓	42.1	↑	Intervention	→	YES
Calderdale*	122.7	↓	40.9	↓	Intervention	→	YES
Preston	154.2	↓	40.9	↑	Intervention	→	YES
Burnley*	138.6	↓	37.3	↓	Intervention	→	YES
Kirklees*	120.1	↑	34.6	↑	Intervention	→	YES
Salford*	144.8	↓	32.2	↓	Intervention	→	YES
Tameside*	162.4	↓	29.8	↓	Intervention	→	YES
Bury*	132.4	↓	29.5	↓	Intervention	→	YES
Trafford*	152.3	↓	27.1	↑	Intervention	→	YES
Bolton*	133.7	↓	25.6	↓	Intervention	→	YES
Stockport*	198.6	↓	23.3	↓	Intervention	→	YES
Northampton***	195.1	↑	125.3	↑	Intervention	↑	NO
Birmingham	100.2	↑	30.2	↑	Enhanced Support	↑	NO
Luton	179.5	↓	26.6	↑	Enhanced Support	→	NO
Swindon	125.0	↑	41.9	↓	Concern	→	NO
Newark and Sherwood	178.7	↑	32.1	↑	Concern	→	NO
Sandwell	98.8	↓	28.4	↑	Concern	→	NO
Oadby and Wigston	124.2	↓	24.5	↑	Concern	→	NO
Slough	113.7	↓	22.8	↑	Concern	↑	NO
Wakefield	113.3	↓	21.4	↑	Concern	→	NO
Peterborough	97.1	↓	16.4	↑	Concern	→	NO
England	107.7	↓	11.9	↑			

Data for specimens taken between 07 August and 13 August as extracted on 18 August  
 \*Local authority is part of an area in which overall infection rates are high, with household transmission a key infection pathway.  
 \*\*Within this Local Authority the interventions have been restricted to the Blackburn wards.  
 \*\*\*Northampton's increase in incidence is almost solely down to a workplace outbreak at the Greencore Factory  
 Trend arrow indicates whether there has been an increase, decrease or no change between this week and last week

# Deaths

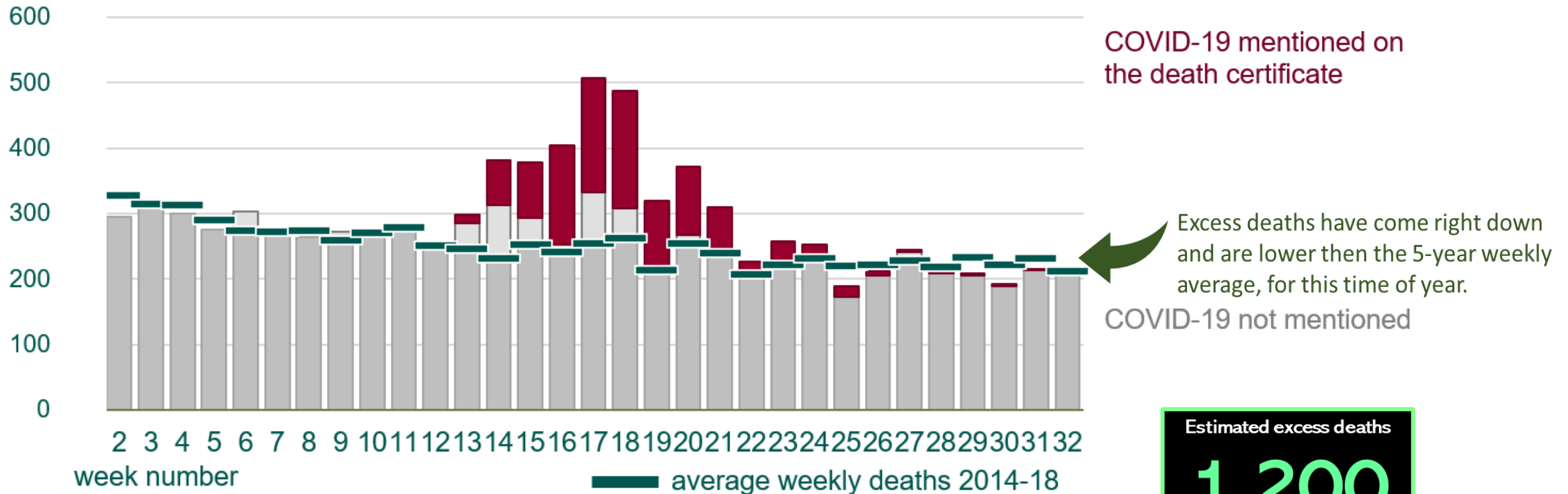
Deaths due to COVID-19 are continuing to decline, - the latest weekly figure is 3  
There have been no excess (extra) deaths above the number we would usually see at this time of year.



Total number of COVID-19 deaths

# 1,061

### All deaths in 2020 by week, with proportion where COVID-19 is mentioned



ONS - Deaths registered weekly in England and Wales, provisional

Estimated excess deaths

# 1,200