

COVID-19 Weekly Update – 9th November 2020

Data correct as of 9th November 2020 but subject to revision

Compiled and published by Hampshire Public Health



This report provides information on the COVID-19 pandemic in Hampshire and includes:

- COVID -19 infections – the total numbers of cases, rates within Hampshire’s districts and overall picture across England
- Deaths - total deaths, which also includes those extra deaths above the number we would normally expect in Hampshire, over recent months
- Hospital admissions – presents the number of patients in Hospital with confirmed COVID-19 in England by NHS Region and number of patients in mechanical ventilation beds in England by NHS Region



Infections – daily COVID-19 cases in Hampshire showing how the epidemic has progressed over time – the ‘epidemic curve’

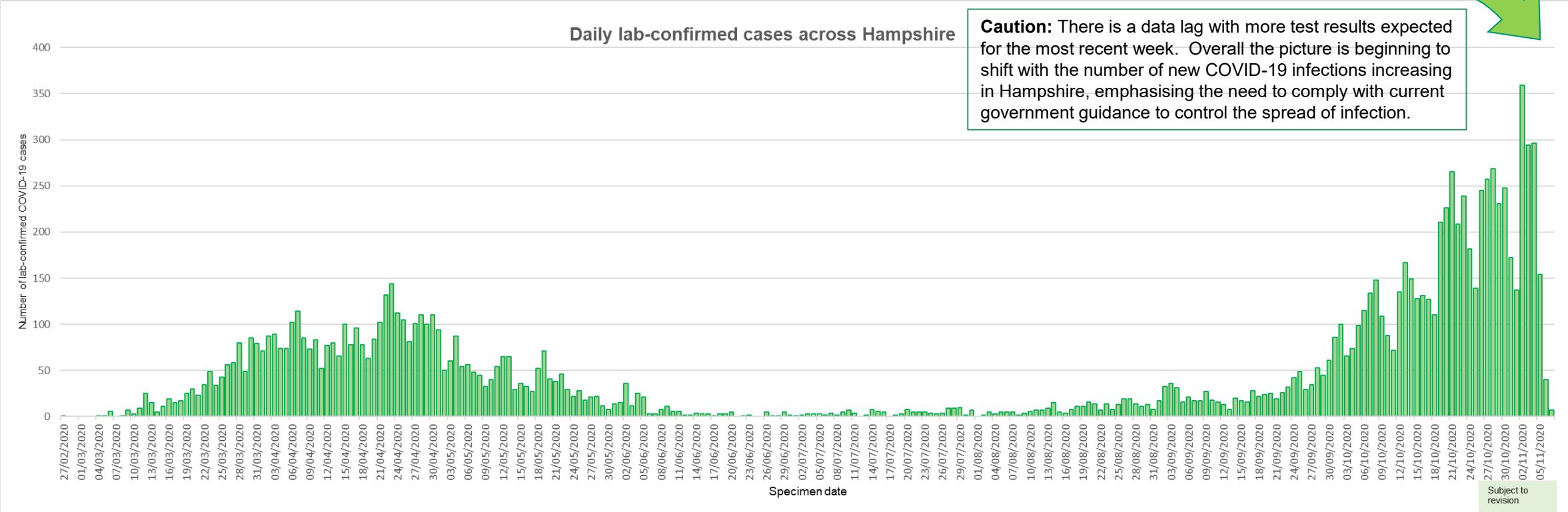
During wave 1 only Pillar 1 testing was available, this included people admitted to hospital and later people living or working in a health or care environment. Widespread community testing (pillar 2) began on 14th July 2020. Due to these different testing strategies it is therefore not possible to directly compare the number and rates of positive tests between wave 1 and wave 2.

Total number of COVID-19 cases



12,426

Data only includes those cases which have tested positive



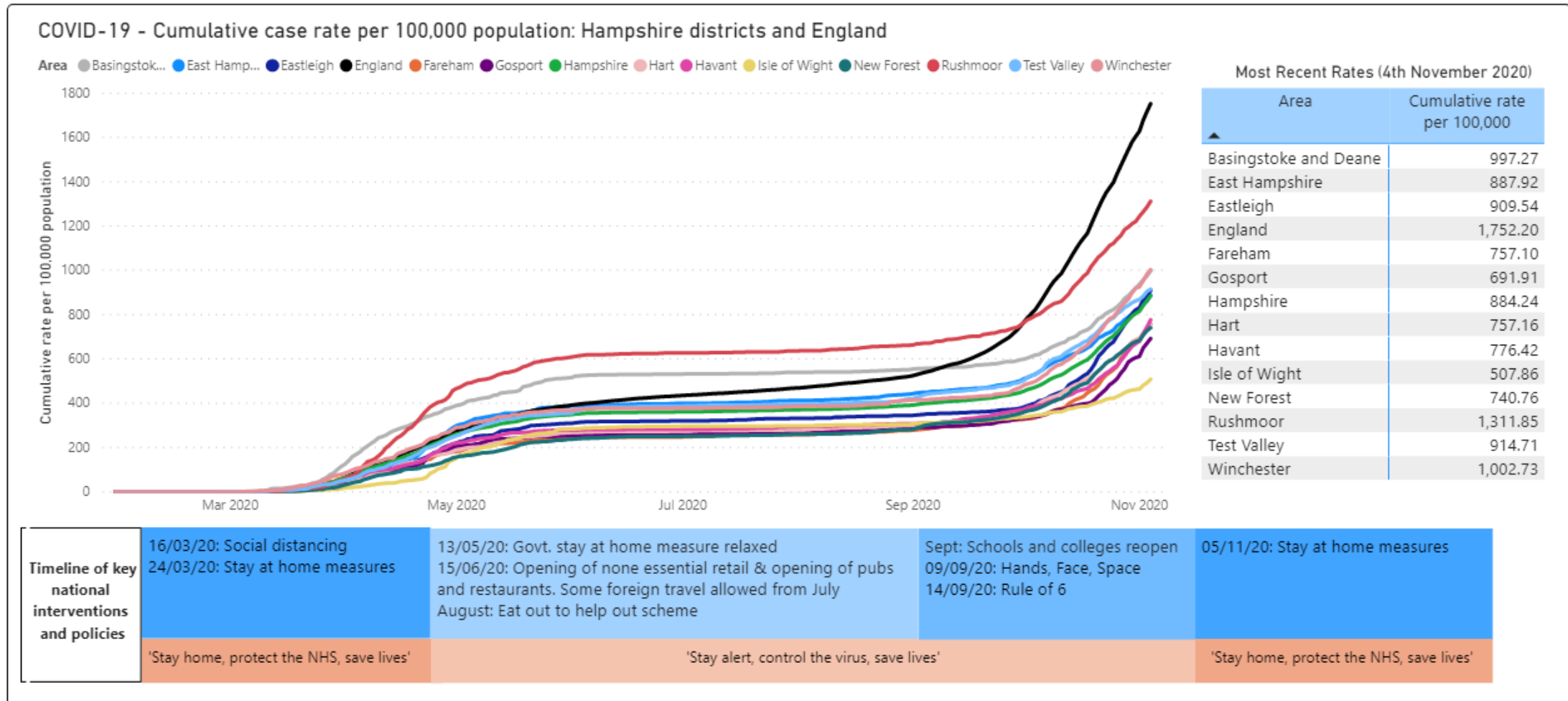
Source: [PHE dashboard](#) (Last updated on 8th November 2020)

The data now includes all cases, those which have been tested by NHS/PHE laboratories and by the Government's commercial testing partners



Infection rates – Total cases per 100,000 people across Hampshire Districts

- The trend in the total figures shows that the infection is slowly rising across Hampshire.
- The highest infection rate has been in the Rushmoor district, where it is currently lower than the average infection rates for England.



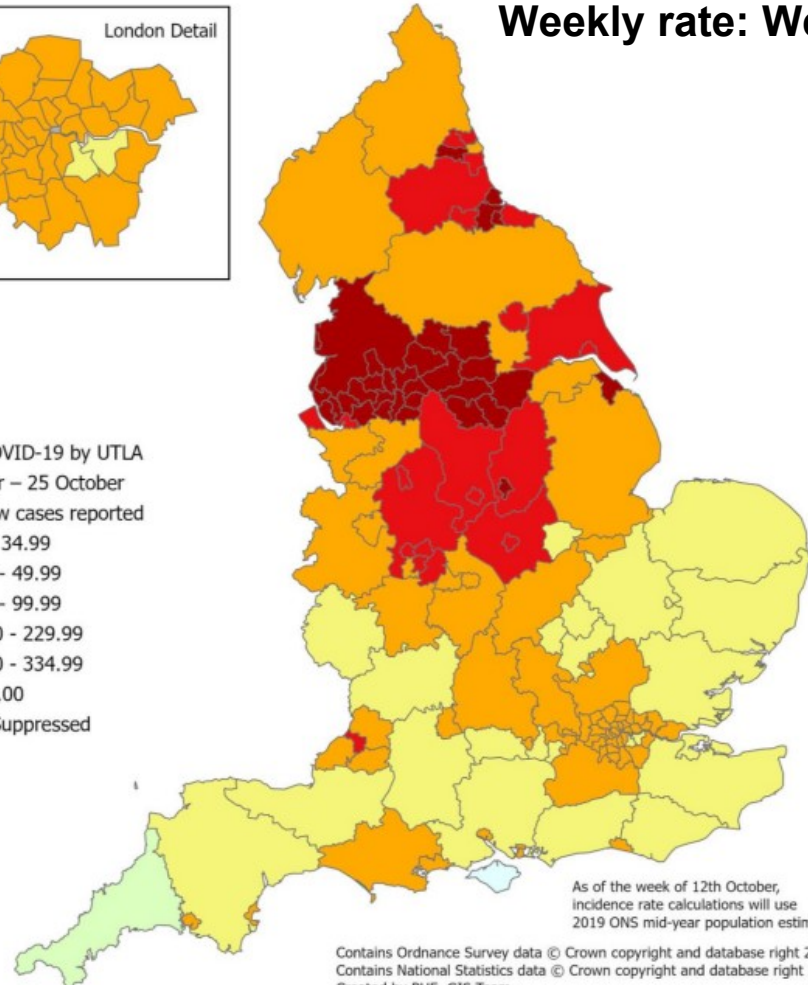
Infections- number of cases of COVID-19 per 100,000 people across England

The epidemic is now no longer localised and is growing in all regions.

Detections of COVID-19 cases in England continued to increase or remain high in week 44, as is evident when comparing to week 43. Case detections decreased slightly compared to last week though this is likely to be driven by reduced testing over the half term period as well as a lag in results for the most recent days. Overall positivity rates continued to increase. Incidence and positivity rates remain highest in the North of England though there are some indications that positivity is starting to decline in the North East and North West. By age group, cases rates were highest in the 20 to 29 year olds with decreases continuing to be noted in the 10 to 19 year olds. Positivity rates were highest in the 80+ year olds tested through both Pillar 1 (NHS and PHE testing) and in the 10 to 19 year olds tested through Pillar 2 (community testing).



Weekly rate: Week 43

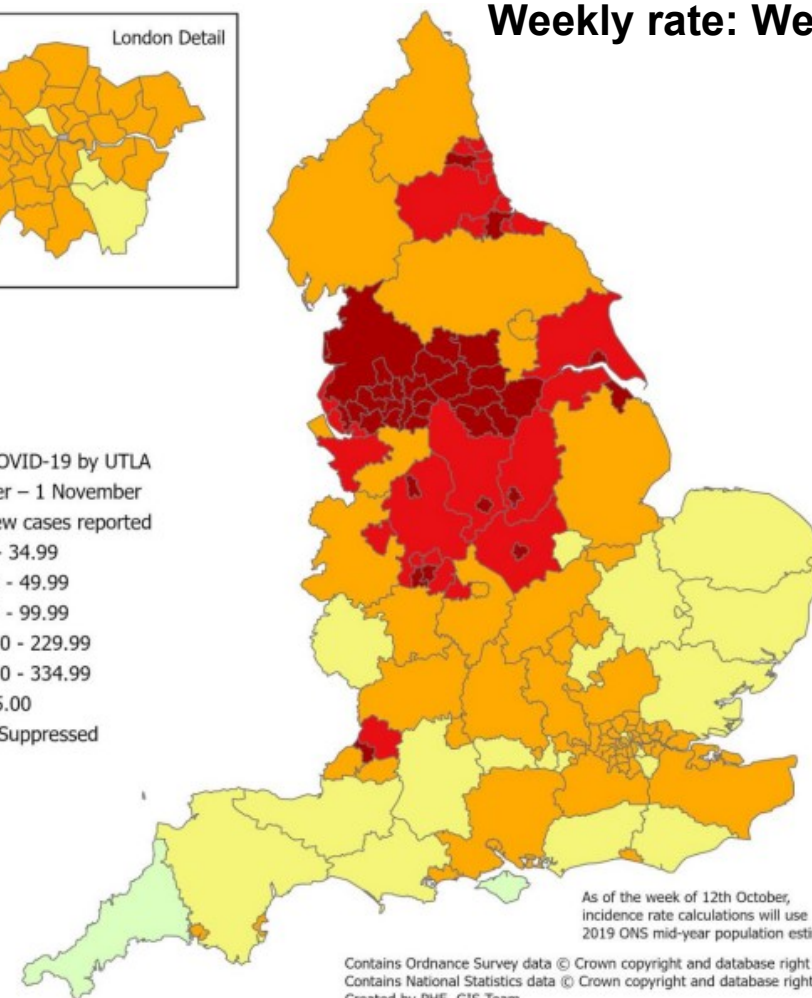


As of the week of 12th October, incidence rate calculations will use 2019 ONS mid-year population estimates.

Contains Ordnance Survey data © Crown copyright and database right 2020.
Contains National Statistics data © Crown copyright and database right 2020.
Created by PHE, GIS Team



Weekly rate: Week 44



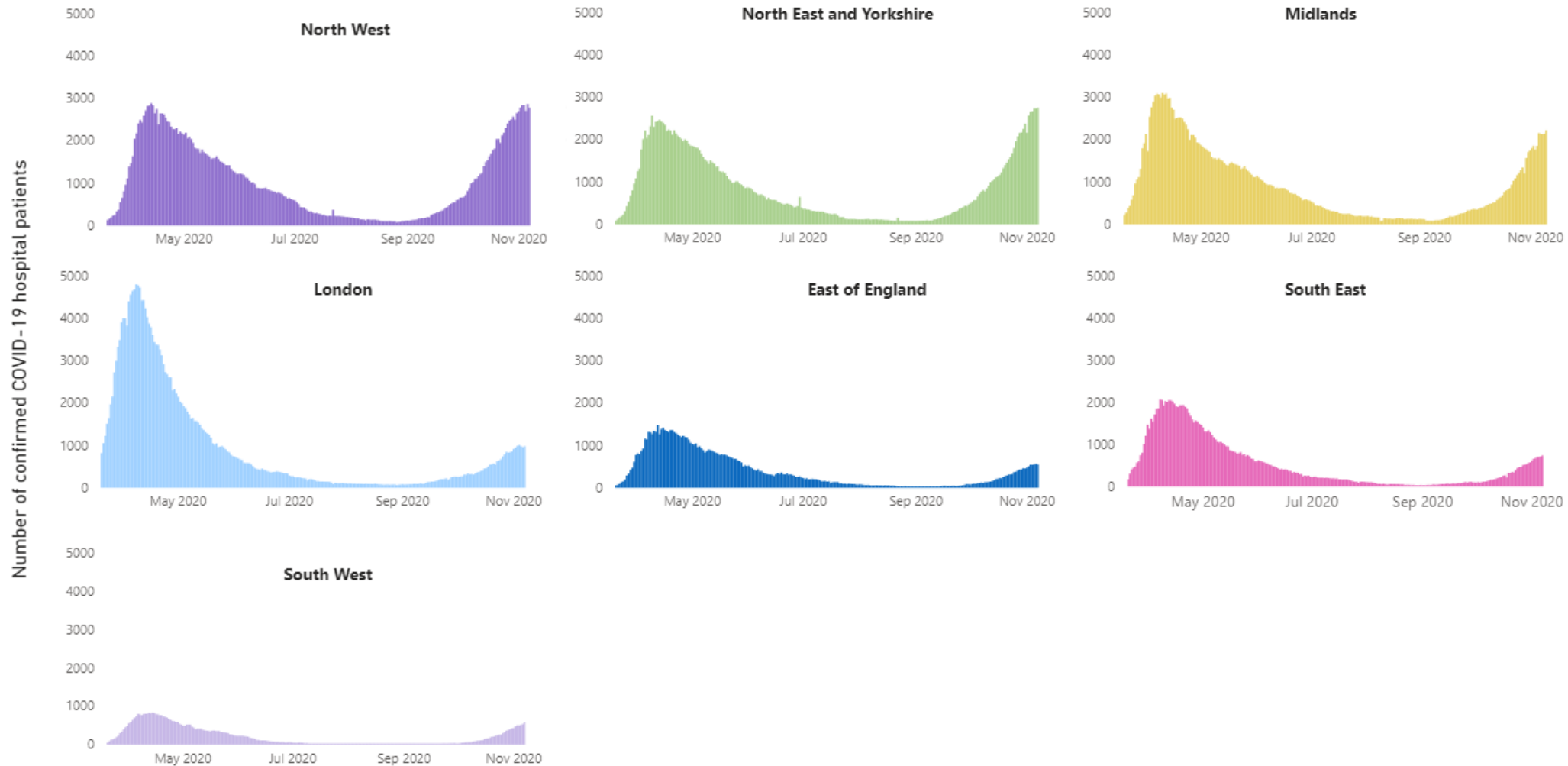
As of the week of 12th October, incidence rate calculations will use 2019 ONS mid-year population estimates.

Contains Ordnance Survey data © Crown copyright and database right 2020.
Contains National Statistics data © Crown copyright and database right 2020.
Created by PHE, GIS Team

Patients in Hospital with confirmed COVID-19 in England by NHS Region

The number of patients with confirmed COVID-19 is increasing across all regions. The South East NHS Region currently has the second lowest number of patients in hospital with confirmed COVID-19, out of all NHS regions. As of the 7th of November 2020 there are 739 patients in South East NHS Region hospitals with confirmed COVID-19.

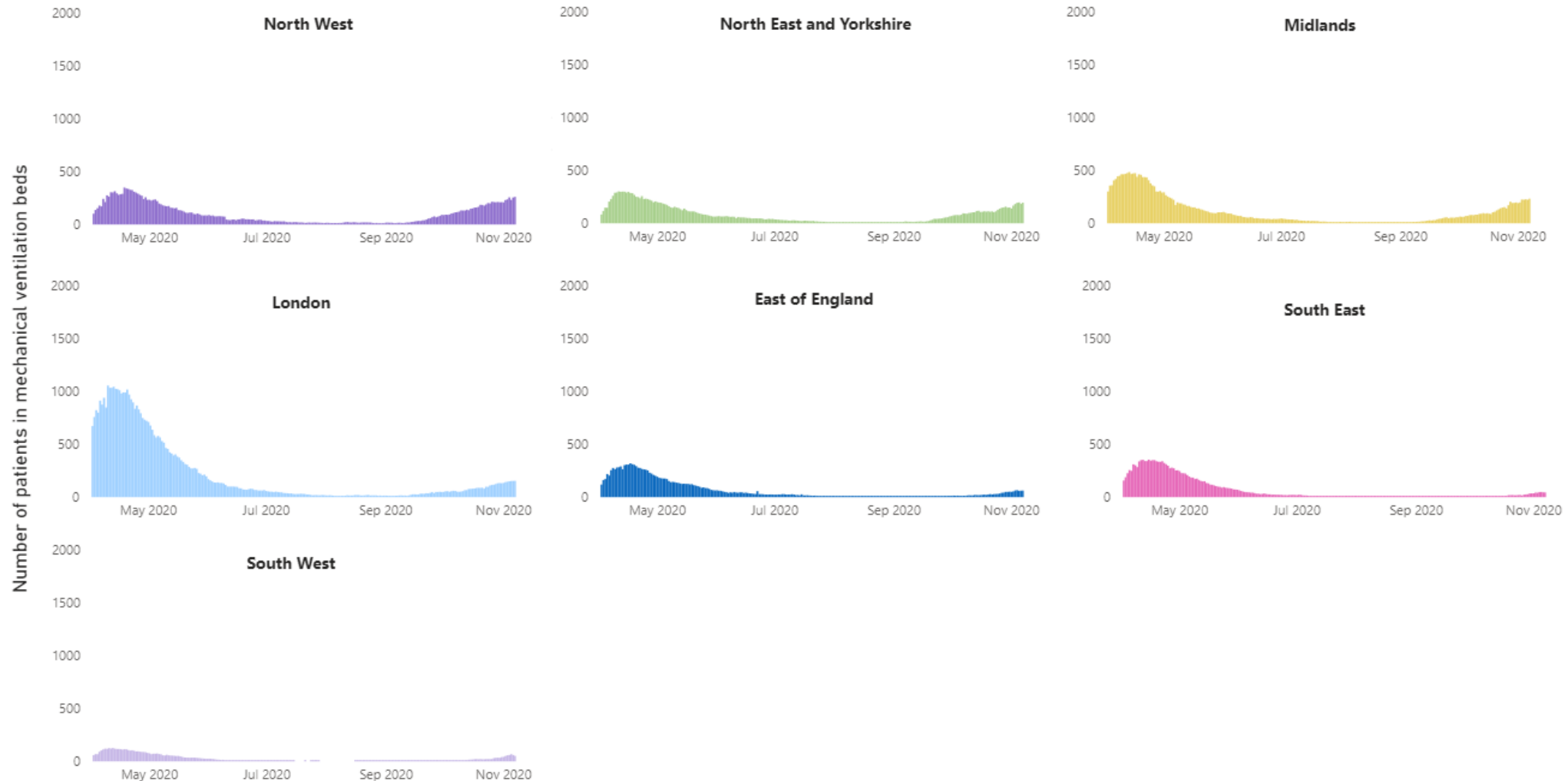
Patients in hospital with COVID-19 in England by NHS Region



Patients in mechanical ventilation beds in England by NHS Region

The number of patients in mechanical ventilation beds is increasing across all regions. The South East NHS Region has the lowest number of patients currently on mechanical ventilation hospital beds. As of the 7th November 2020, the number of patients on mechanical ventilation beds in the South East NHS Region is 44.

Patients in mechanical ventilation beds in England by NHS Region

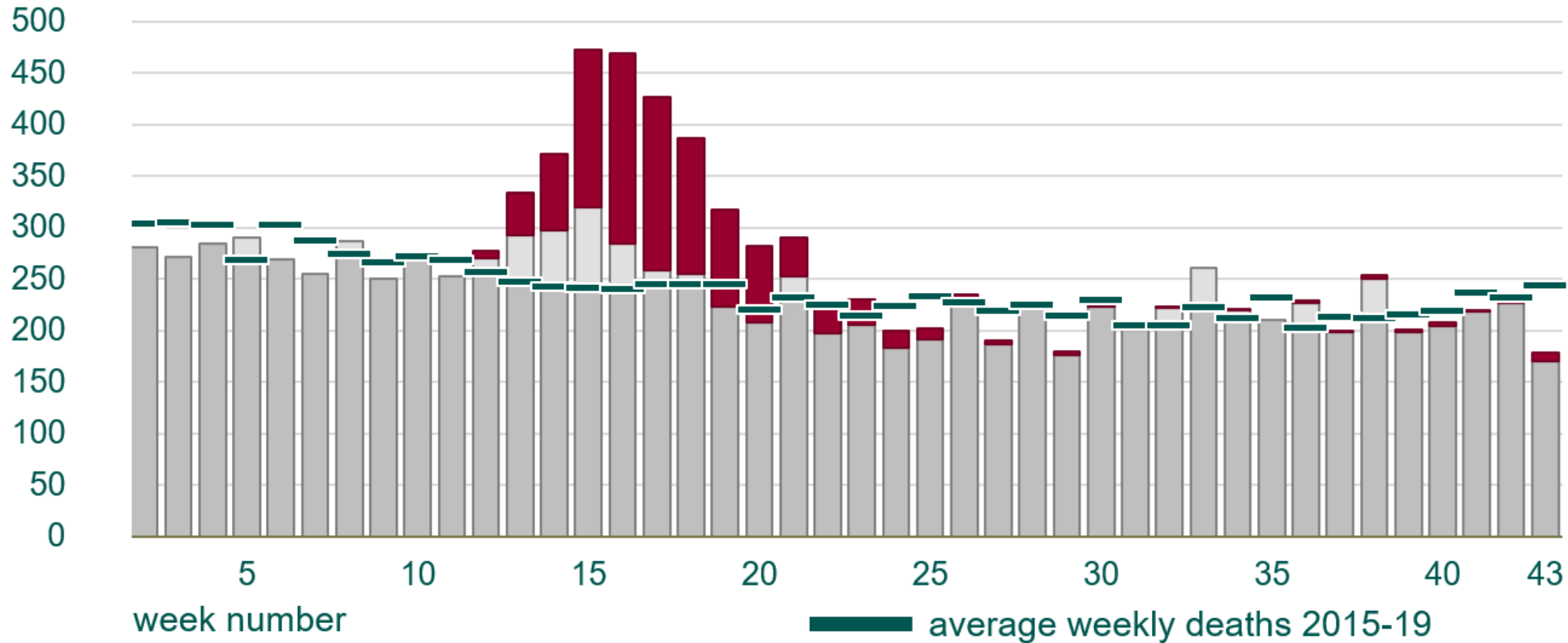


Deaths

Deaths due to COVID-19 continue to be low, - the latest weekly figure is **8**.
Excess (extra) deaths are below the number we would usually see at this time of year.

Total number of COVID-19 deaths
1,091

All deaths in 2020 by week, with proportion where COVID-19 is mentioned



COVID-19 mentioned on the death certificate

Excess deaths continue to be lower than the 5-year weekly average, for this time of year.

COVID-19 not mentioned

Estimated excess deaths

1,200

ONS - Deaths registered weekly in England and Wales, provisional

Source: PHE ONS- Deaths registered weekly in England and Wales, provisional

