

COVID-19 Weekly Update – 7th August 2020

Data correct as of 7th August, but subject to revision

Compiled and published by Hampshire Public Health

7th August 2020



Hampshire
County Council

This report provides information on the COVID-19 pandemic in Hampshire and includes:

- COVID -19 infections – the total numbers of cases, rates within Hampshire's districts and overall picture across England
- Care homes – data on outbreaks and current picture
- Deaths - total deaths, which also includes those extra deaths above the number we would normally expect in Hampshire, over recent months

STAY ALERT › CONTROL THE VIRUS › SAVE LIVES



Hampshire
County Council

Infections – daily COVID-19 cases in Hampshire showing how the epidemic has progressed over time – the ‘epidemic curve’

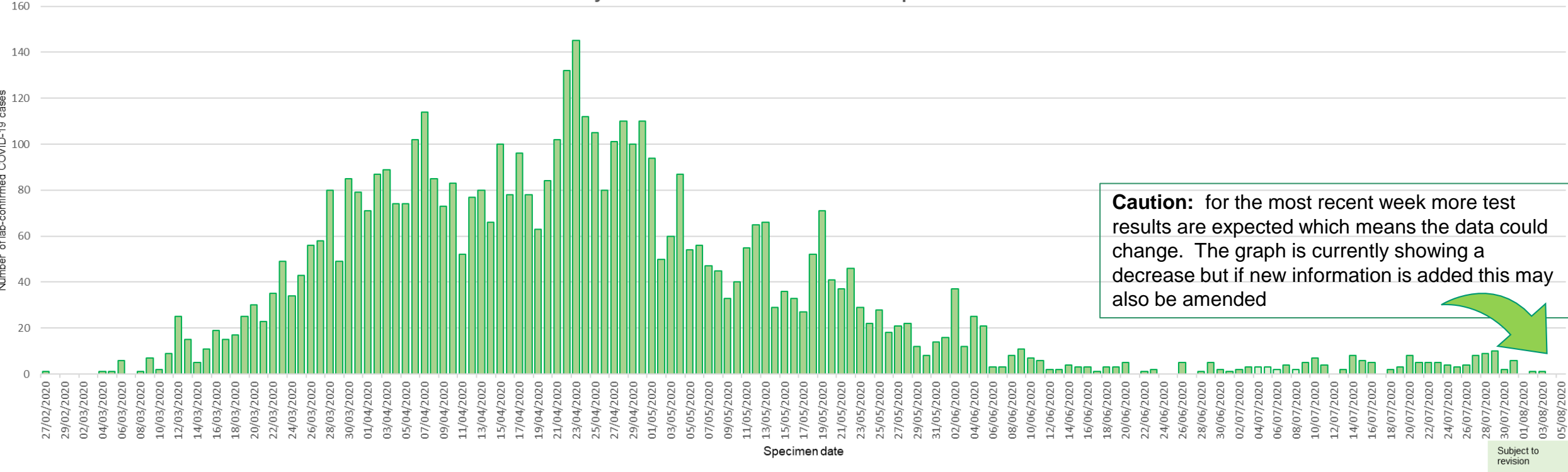
Overall numbers of those infected with COVID-19 are decreasing, with occasional cases now occurring.



Total number of COVID-19 cases
5,126

Data only includes those cases which have tested positive

Daily lab-confirmed cases across Hampshire



Source: [PHE dashboard](#) (Last updated on 5th August 2020)

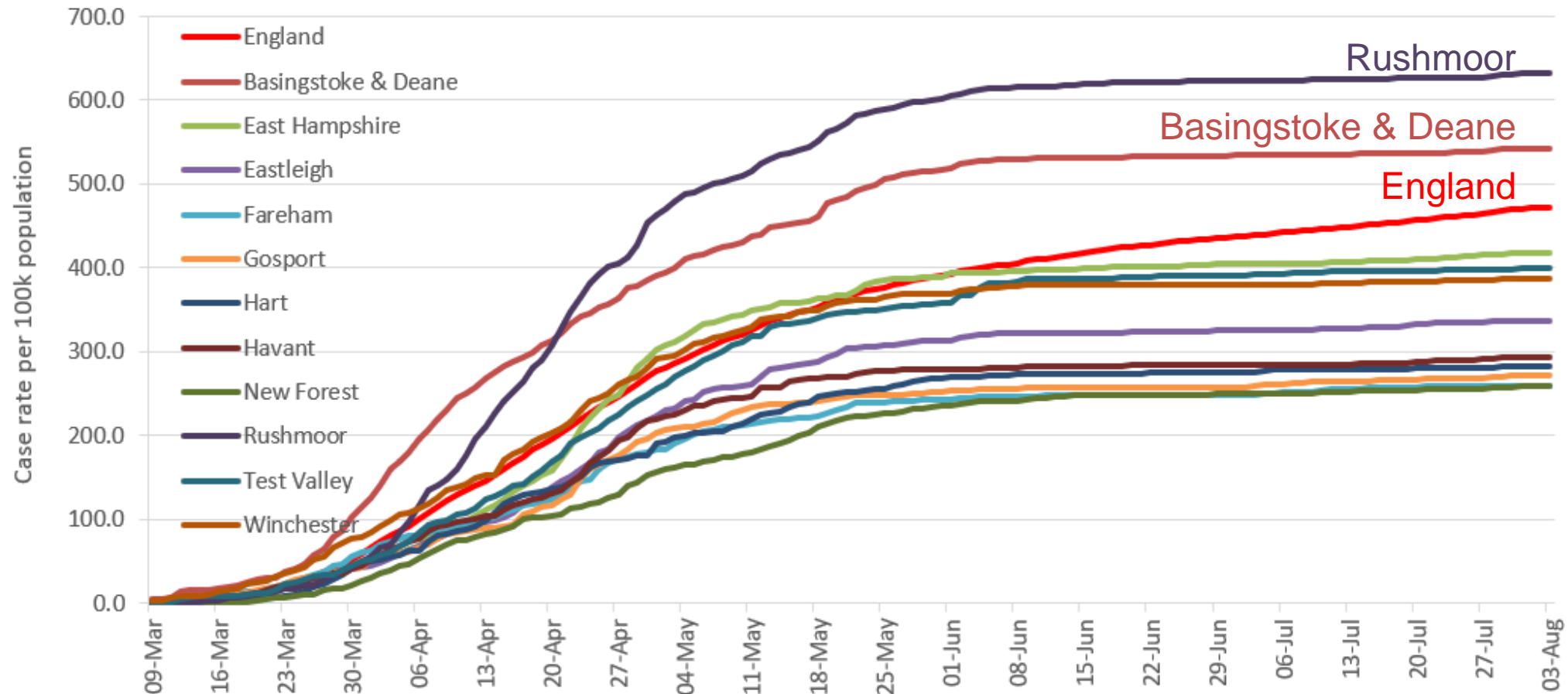
The data now includes all cases, those which have been tested by NHS/PHE laboratories and by the Government's commercial testing partners



Infection rates – Total cases per 100,000 people across Hampshire Districts

- The trend in the total figures shows that the infection is levelling off across Hampshire
- The highest infection rates have been in Rushmoor and Basingstoke & Deane districts, where these have been greater than the average infection rates for England

COVID 19 - Case rate per 100k population: Hampshire districts and England



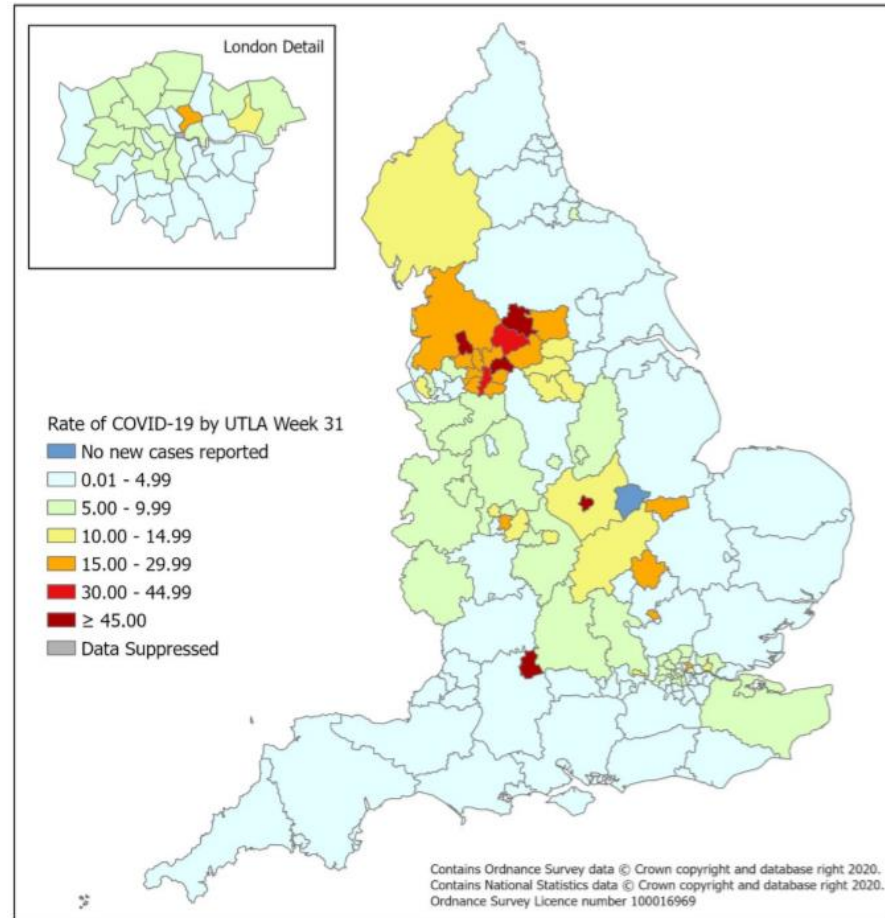
Source: Data.gov COVID-19 dashboard & ONS MYE 2018

STAY ALERT ▶ CONTROL THE VIRUS ▶ SAVE LIVES

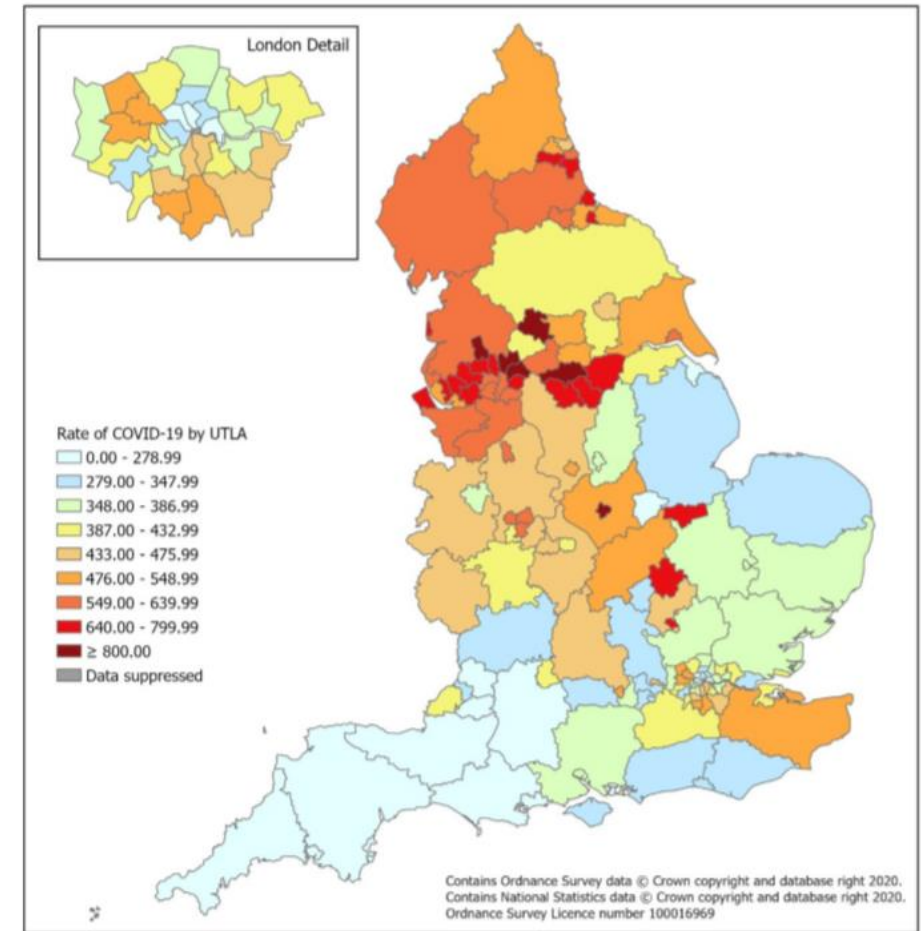
Infections- number of cases of COVID-19 per 100,000 people across England

At a local authority level, activity was highest in Luton where incidence has continued to increase. Activity in Leicester has continued to decrease.

Weekly rate, week 32



Cumulative rate

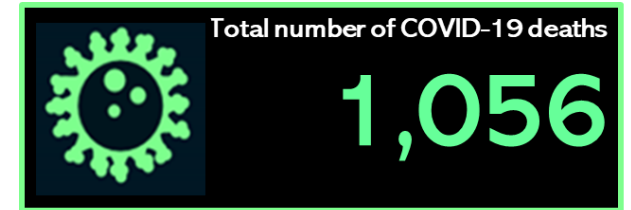


STAY ALERT ▶ CONTROL THE VIRUS ▶ SAVE LIVES

Source: [Weekly Coronavirus Disease 2019 \(COVID-19\) Surveillance Report](#)

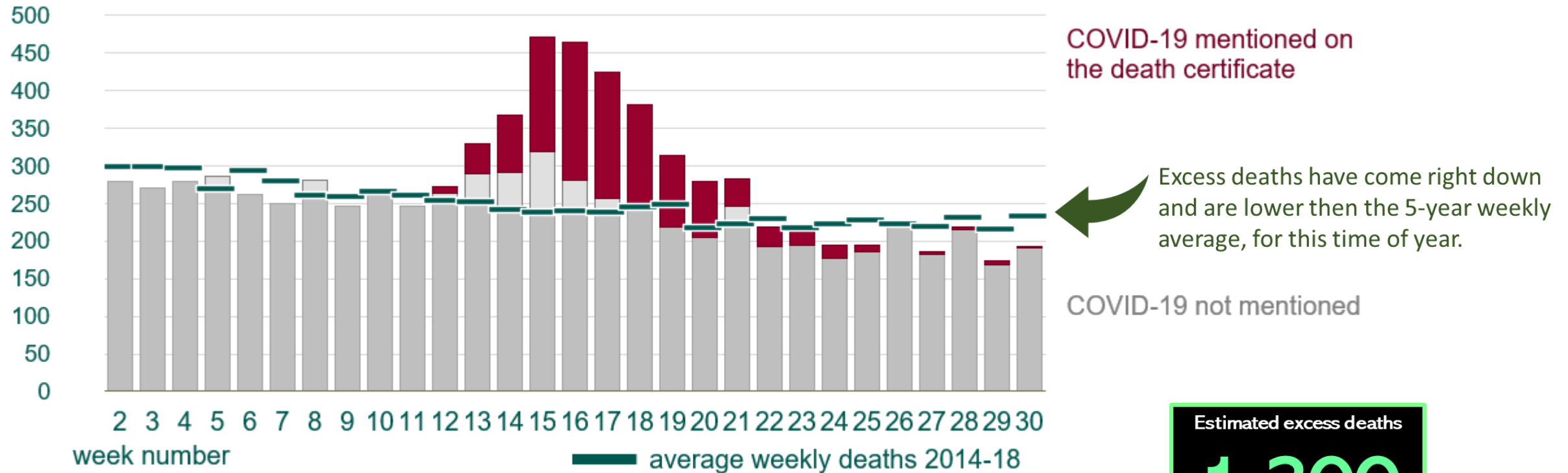
Deaths

Deaths due to COVID-19 are continuing to decline, - the latest weekly figure is 2
There have been no excess (extra) deaths above the number we would usually see at this time of year.
This is the 9th week in a row that we have seen a decrease in the average number of deaths.



Total number of COVID-19 deaths
1,056

All deaths in 2020 by week, with proportion where COVID-19 is mentioned



ONS - Deaths registered weekly in England and Wales, provisional



Estimated excess deaths
1,200

STAY ALERT > CONTROL THE VIRUS > SAVE LIVES

Source: PHE ONS- Deaths registered weekly in England and Wales, provisional