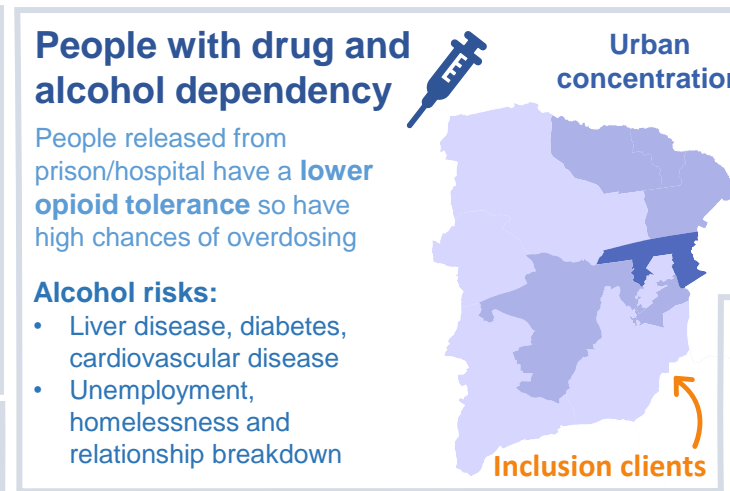
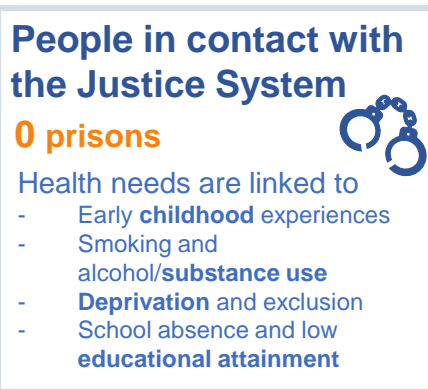
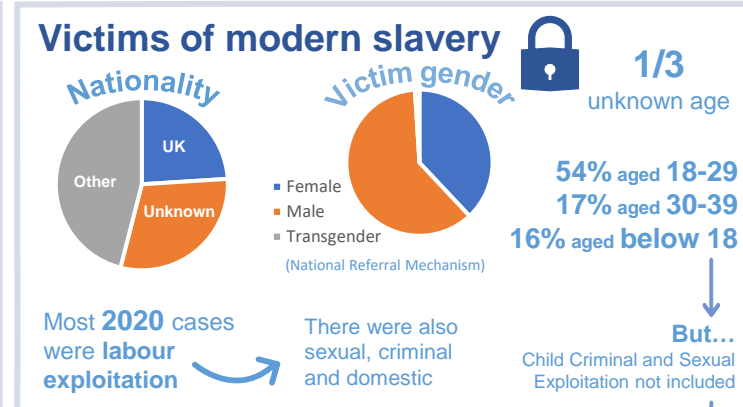
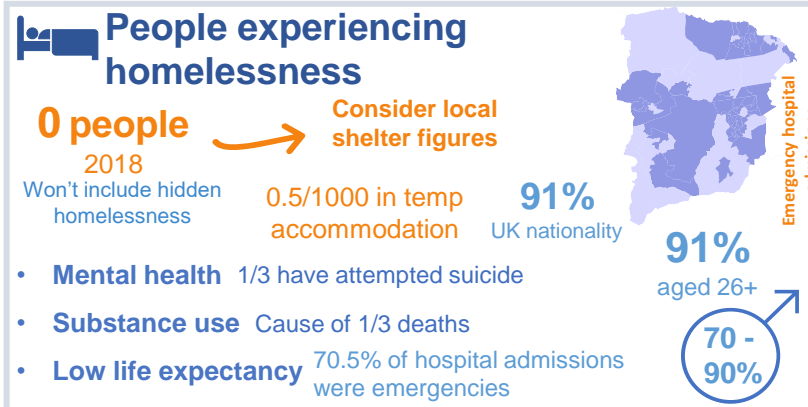
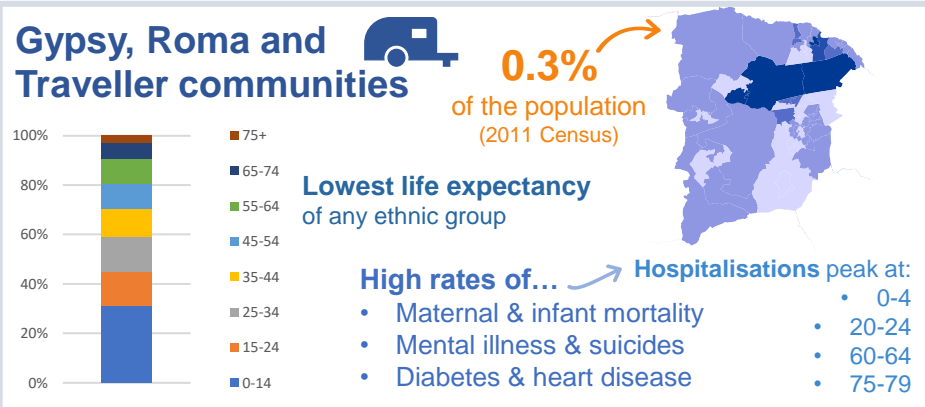


Inclusion Health Groups: Hart

Key:
National data = dark blue
UTLA data = light blue
TLTA data = orange

Inclusion health is a 'catch-all' term used to describe people who are socially excluded. People in inclusion health groups frequently suffer from multiple health issues.



Hampshire Constabulary cases have remained **stable since 2017**

Victims often work in **everyday roles** e.g. nail bars, agriculture, car washes & construction

