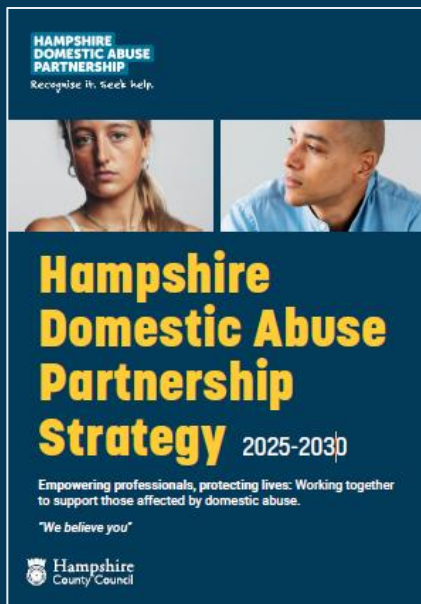
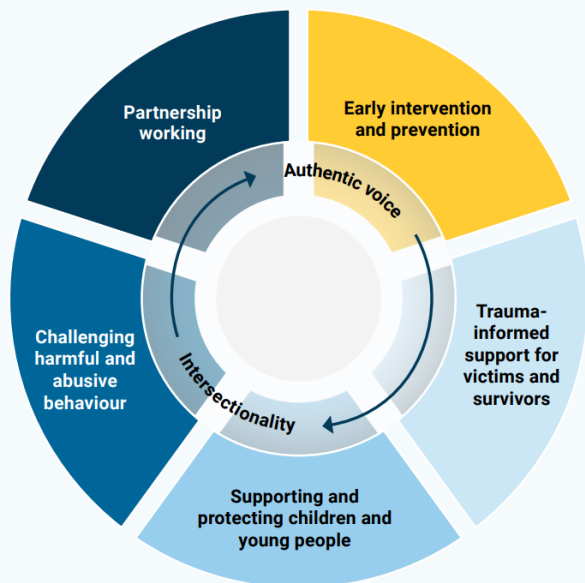


# Hampshire Domestic Abuse Strategy 2025-30

Our **vision** is to create communities where domestic abuse is actively challenged and not tolerated, victims/survivors and their children are empowered to seek support, people causing harm are held to account, and all partners act confidently and collaboratively.



## Our strategic priorities



Priority area	Focus	Delivery group
<b>Early intervention &amp; prevention</b>	Engaging communities, promoting awareness, education & training.	Early Action and Partnership
<b>Trauma-informed support for victims/survivors</b>	Trauma-informed services, effective pathways, empowering survivors	Support and Services
<b>Children and young people</b>	Trauma-informed services, development of a practice framework, education & awareness of healthy relationships.	Children and Young People
<b>Challenging harmful and abusive behaviour</b>	Supporting behaviour change, holding people causing harm to account, and reducing incidents of harm.	Support and Services
<b>Partnership working</b>	Embedding the Coordinated Community Response model, learning from reviews, using local data, delivery of the Domestic Abuse Act requirements and embedding survivor standards.	Early Action and Partnership

## Our Values

**Trauma-informed:** Recognising the impact of trauma on survivors, including children and young people, and responding with sensitivity, empathy and understanding, creating safe, supportive environments that minimise re-traumatisation and promote healing.

**Survivor-centred:** Prioritising the safety, dignity and empowerment of survivors in all decisions and actions, building trust and respecting their autonomy, choices and lived experiences.

**Collaborative and accountable:** Valuing and fostering strong, respectful partnerships to take a whole system approach, sharing resources, knowledge and expertise to enhance collective impact.

## How we will deliver the strategy

