

**Hampshire Pharmaceutical Needs Assessment**  
**Localities appendix (PNA supplement two)**  
**2025-2028**

## Contents

1. Basingstoke and Deane.....	2
2. East Hampshire .....	9
3. Eastleigh .....	16
4. Fareham .....	22
5. Gosport.....	28
6. Hart.....	34
7. Havant .....	39
8. New Forest .....	45
9. Rushmoor .....	52
10. Test Valley .....	58
11. Winchester.....	65

## **Basingstoke and Deane**

In 2025, Basingstoke and Deane is estimated to have a population of around 190,000, of which 19.5% are aged 65 years and over. This is slightly younger than the Hampshire average, where approximately 23.5% of the population is aged over 65. Basingstoke & Deane has a younger population, more working age residents and fewer older people than Hampshire as whole, see figure 1. Data from the 2021 Census reports 81.6% of Basingstoke & Deane's resident population are of the ethnic group 'White British' and 18.1% report their ethnicity as being from ethnic minority groups. This is a higher proportion than Hampshire overall (12.1%). Basingstoke and Deane had the biggest increase in the number of people who are from an ethnic minority from the 2011 census to the 2021 census, an increase of 70%, which equates to 13,860 people.

The population density is 292.1 people per square kilometre, which is lower than the overall population density of Hampshire (380.8). Basingstoke town is the main urban area, holding approximately 60% of the district population. A further 10% of the population live in other urban towns, whilst 16% live in rural town and fringe areas, and 14% live in rural villages.

Deprivation is lower than England and very similar to that seen in Hampshire as a whole. Within the town of Basingstoke there are some areas with higher levels of deprivation, particularly in Buckskin, South Ham, Eastrop and Popley. This affects a substantial number of people who are consequently likely to have poorer health. The more rural areas of the district have greater levels of affluence. As of 2023, 10.1% of children were living in income deprived households and 4.6% of people aged 60+ claimed pension credit in February 2024. Both measures were significantly lower than the national averages of 19.7% and 7.6% respectively.

The health of people in Basingstoke & Deane is generally better than the England average. 15% of the population described themselves as disabled under the Equality Act compared to 17.3% nationally. 3.7% of the district's population described their health as 'bad or very bad' compared to 5.2% of the population describing their health in this way nationally.

Figures for 2020-2022, show that life expectancy for men (80.9 years) and women (83.5 years) resident in Basingstoke and Deane is higher than the England average. However, there are inequalities across the district, with a difference of 7.4 years between male life expectancy in the most and least deprived deciles of the district, and a corresponding difference of 3.4 years for females.

Basingstoke and Deane ranked lower than the Hampshire average for healthy life expectancy for all persons in 2018-2022, 68.6 years compared to 69.3 years. By examining the difference between life expectancy and healthy life expectancy, the number of years lived in poor health can be estimated. The figure calculated for

Basingstoke and Deane (13.7 years) was the same as the Hampshire average (13.7 years).

### Future growth

Over the next five years there is a forecast growth of 7,320 people in Basingstoke and Deane, an increase of 3.9%. The largest proportional and absolute forecast increase was in the 65-74 age group. This segment of the population is predicted to increase by 2,910 people, representing an increase of 16%, see figure 2. There is a growth of 4,530 dwellings (5.5% change) predicted between 2025 and 2030. The largest growth in the number of dwellings and associated population is predicted to be south of Basingstoke town near the village of Dummer.

Figure 1 - Population Age and Sex Structure 2025: Basingstoke and Deane compared to Hampshire

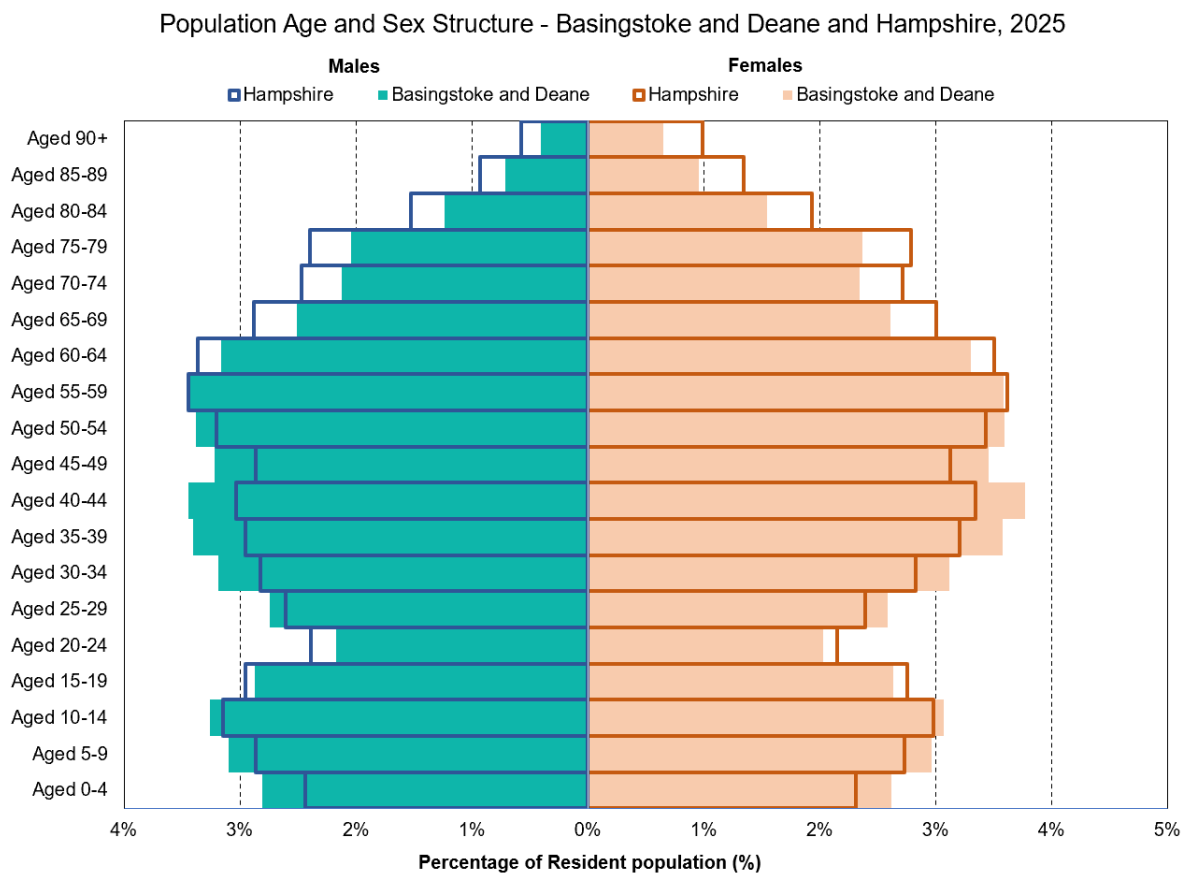
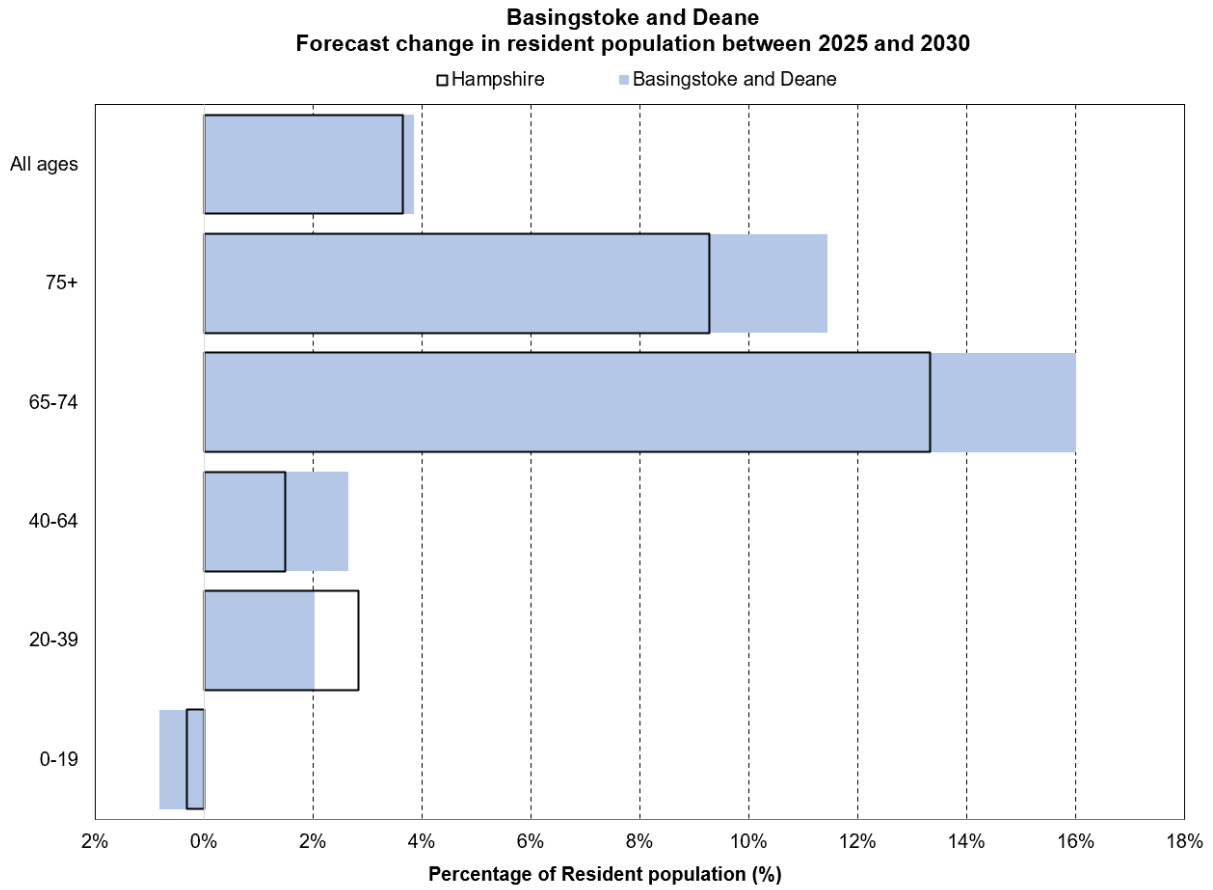
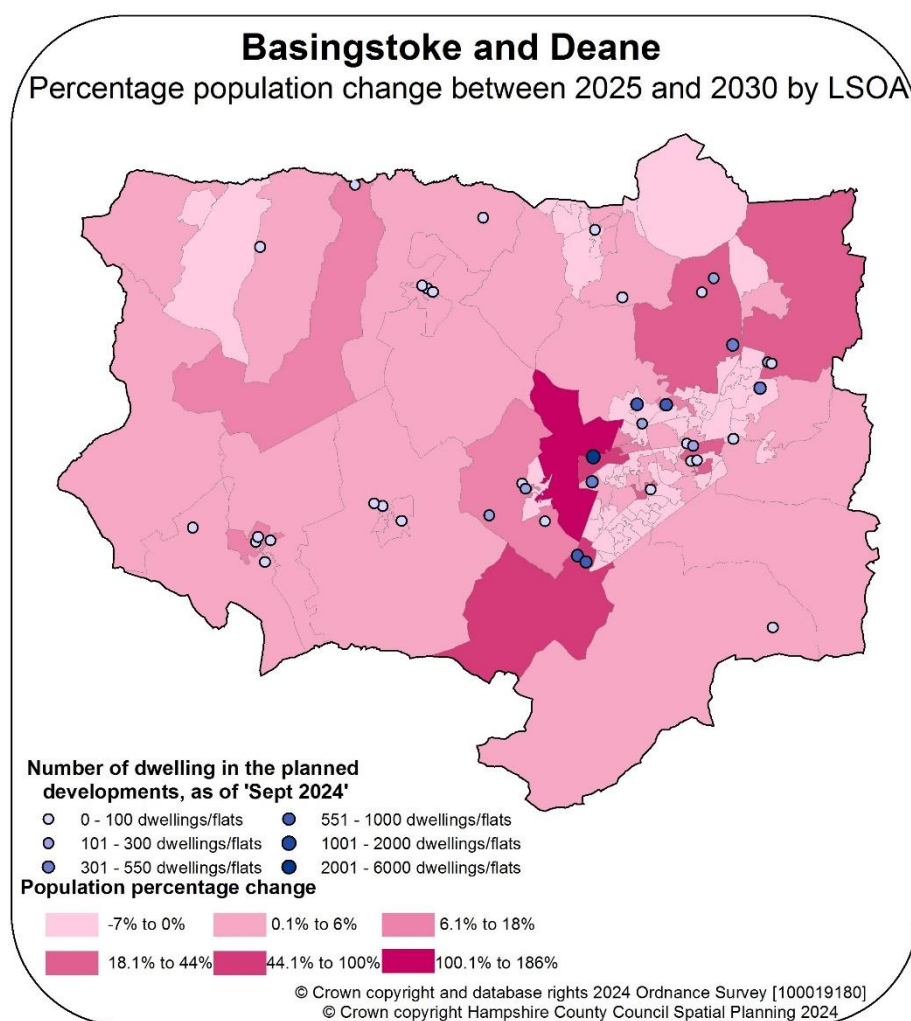


Figure 2 – Forecast change in resident population between 2025 and 2030: Basingstoke and Deane & Hampshire





## Pharmacy Provision

As at September 2024, there are 23 community pharmacies throughout this district. This includes two 100-hour pharmacies. There is also one dispensing appliance contractor and six dispensing GP practices across Basingstoke and Deane. Two locations are in Tadley. The remaining four locations are in Bramley, Whitchurch, St Mary Bourne and Kingsclere.

There is good out of hours provision available from Monday to Friday. 6 pharmacies are open after 18:30 with three staying open later into the evening after 20:00. There are no sites open before 08:00 but with one pharmacy opens at 08:00.

Weekend opening hours comprises of 18 pharmacies with opening times extending from 09:00 to 21:00 on a Saturday. Of these, ten close at lunch time (at 13:00 or before), six close in the afternoon to early evening (between 17:00 and 18:00) and two stay open later into the evening (both close at 21:00). On Sunday, there are four pharmacies open across Basingstoke, with one staying open until 18:00 and the other three closing at 16:00.

Travel distance to pharmacies is good, with 95% of the area's resident population being within 5 miles of road travel of a pharmacy within Basingstoke and Deane, according to the 2022 ONS Small Area Population Estimates used by the SHAPE atlas (see map 2). Areas with the largest population growth over the next five years are well served by current provision. The areas not covered are areas of very high rurality, low population density and low road coverage to the north west of the district, see map 1.

The residents of the villages of Burghclere and Highclere and surrounds, a rural area identified as having no access to a Basingstoke & Deane district pharmacy within 5 miles, have access to three pharmacies across the border in West Berkshire, two located in Greenham and one in Wash Common.

The proposed large housing development sites have good pharmacy cover. The Manydown development can access the pharmacy located in Winklebury, which is open five days a week between 09:00-13:00 and 14:00-18:00 and on Saturday between 09:00 and 13:00. The two developments at Hounsome Fields and Basingstoke Golf Course can access the pharmacy located in Kempshott Park. This is open from 09:00-13:00 and 13:30-18:00, Monday to Friday.

There is good provision of pharmacy cover in Basingstoke and Deane matching current need and future planned population growth. There are no identified needs for improvement and better access.

Map 2 – Basingstoke & Deane pharmacies and area within 5 miles travel distance

### Hampshire Pharmaceutical Needs Assessment 2025-28 Travel distances from pharmacies - Basingstoke and Deane

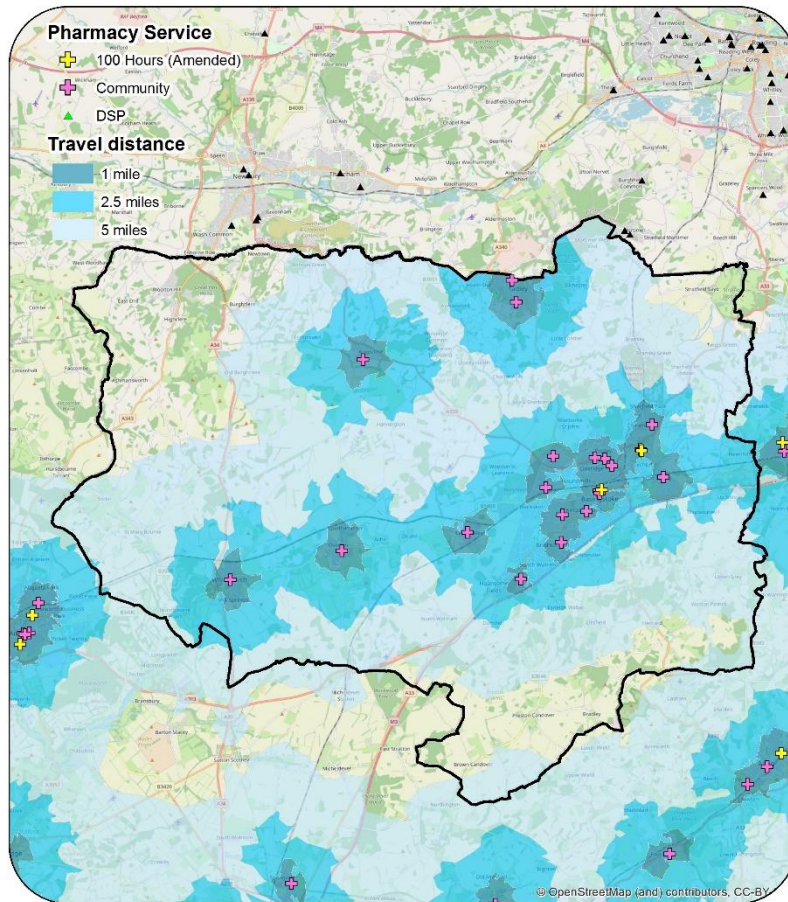
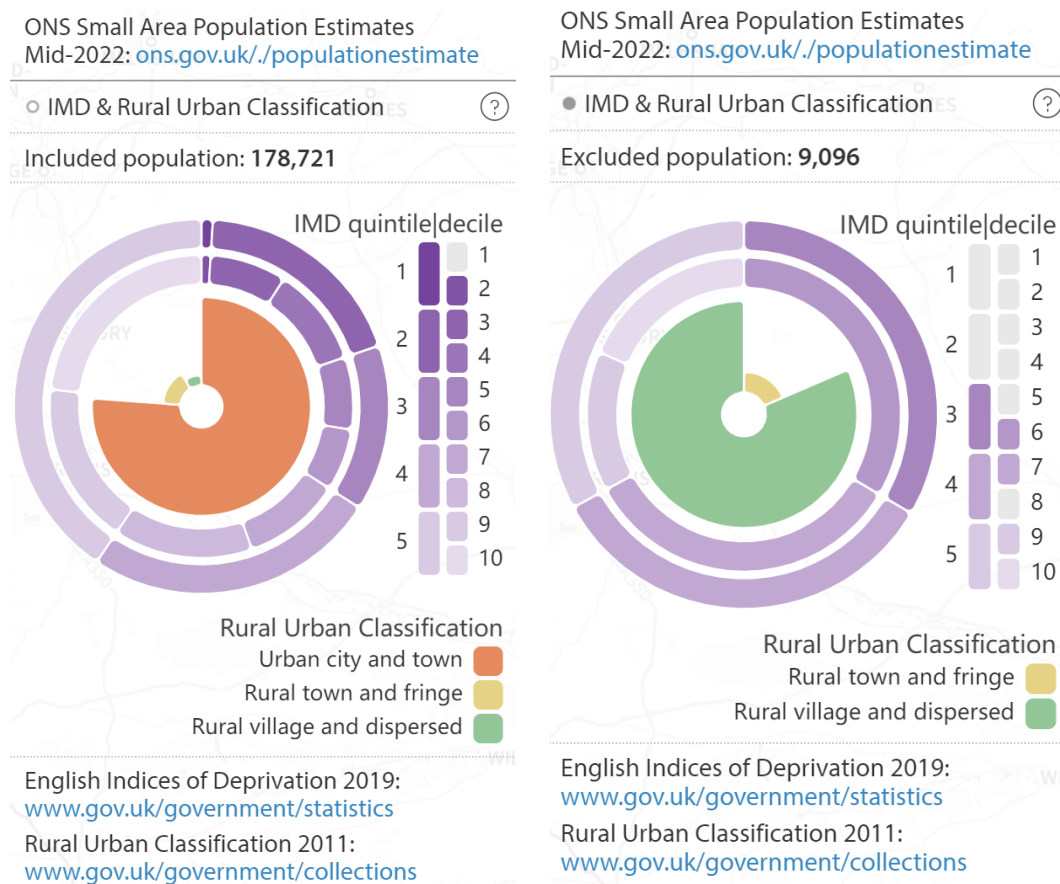


Figure 3: Charts illustrating the characteristics of the included and excluded population of Basingstoke & Deane within 8 km / 5 miles distance of a pharmacy by car



## East Hampshire

In 2025, East Hampshire is estimated to have a population of around 131,000, of which 25.5% are aged 65 years and over. This is slightly older than the Hampshire average, where approximately 23.5% of the population is aged over 65. East Hampshire has a relatively large proportion of residents aged above 50 years old and a smaller proportion of residents between 20-39 years old compared to Hampshire, see figure 4. Data from the 2021 Census reports 90.5% of East Hampshire's resident population are of ethnic group 'White British' and 9.5% report their ethnicity as being from ethnic minority groups. This is a lower proportion than Hampshire overall (12.1%).

The population density is 244.4 people per square kilometre, which is lower than the overall population density of Hampshire (380.8). The main urban areas within East Hampshire include Petersfield, Bordon, Alton and an area to the south of the district near Cowplain. 65% of the population live in these urban areas. A further 18% of the population live in rural town and fringe area, whilst the remaining 17% are based in rural villages.

Deprivation is lower than England and Hampshire as a whole. However, there are higher levels of deprivation in Petersfield, Bordon and Alton. The more rural areas of the district have greater levels of affluence. As of 2023, 9.6% of children were living in income deprived households and 3.8% of people aged 60+ claimed pension credit in February 2024. Both measures were significantly lower than the national averages of 19.7% and 7.6% respectively.

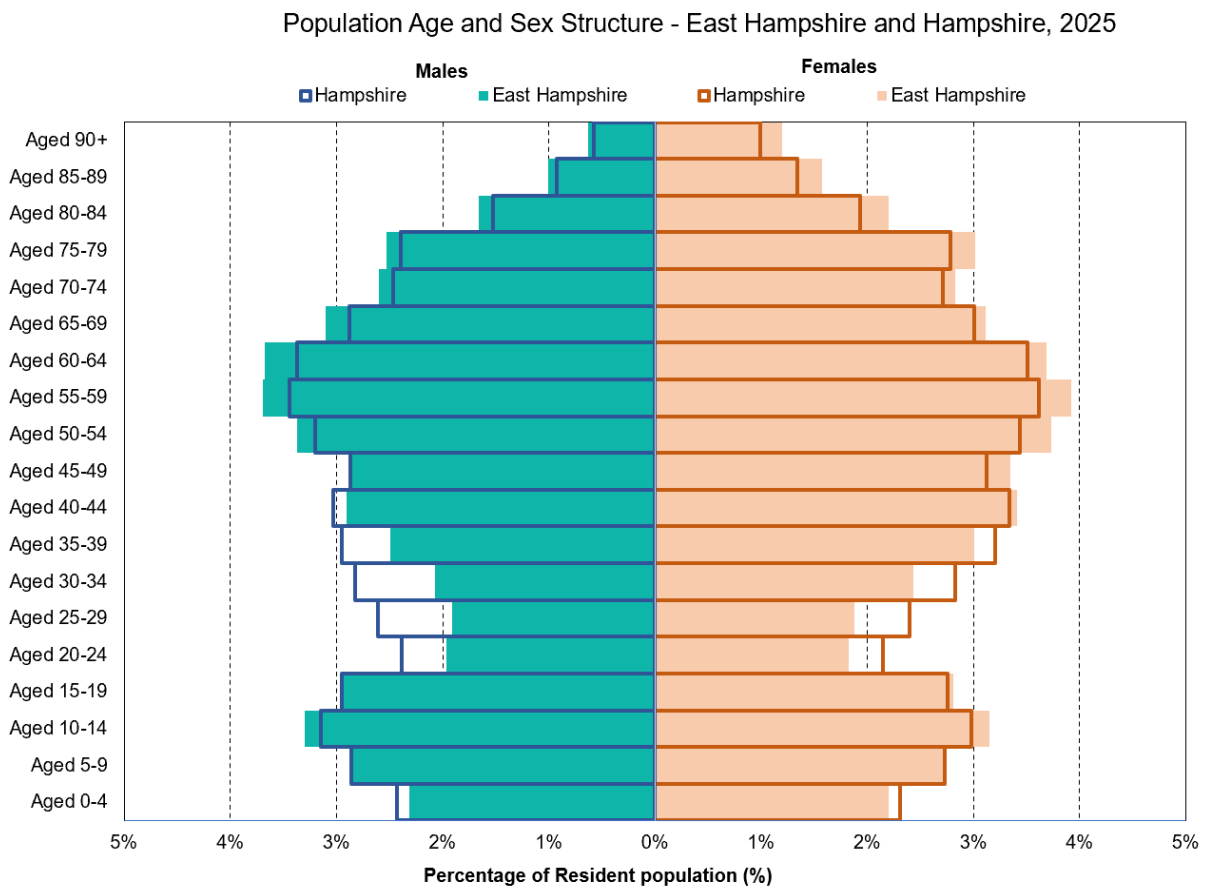
The health of people in East Hampshire is generally better than the England average. 15.6% of the population described themselves as disabled under the Equality Act compared to 17.3% nationally. 3.6% of the district's population described their health as 'bad or very bad' compared to 5.2% describing their health in this way nationally.

Figures for 2020-2022, show that life expectancy for men (82.3 years) and women (85.4 years) resident in East Hampshire is higher than the England average. There are inequalities across the district with a difference of 4.9 years between male life expectancy in the most and least deprived deciles of the district and a corresponding difference of 0.7 years for females. Healthy life expectancy for all persons for East Hampshire residents in 2018-2022 was 71.0 years, ranked higher than the Hampshire average (69.3 years). By examining the difference between life expectancy and healthy life expectancy, the number of years lived in poor health can be estimated. The figure calculated for East Hampshire (12.6 years) ranked lower than the Hampshire average (13.7 years).

## Future growth

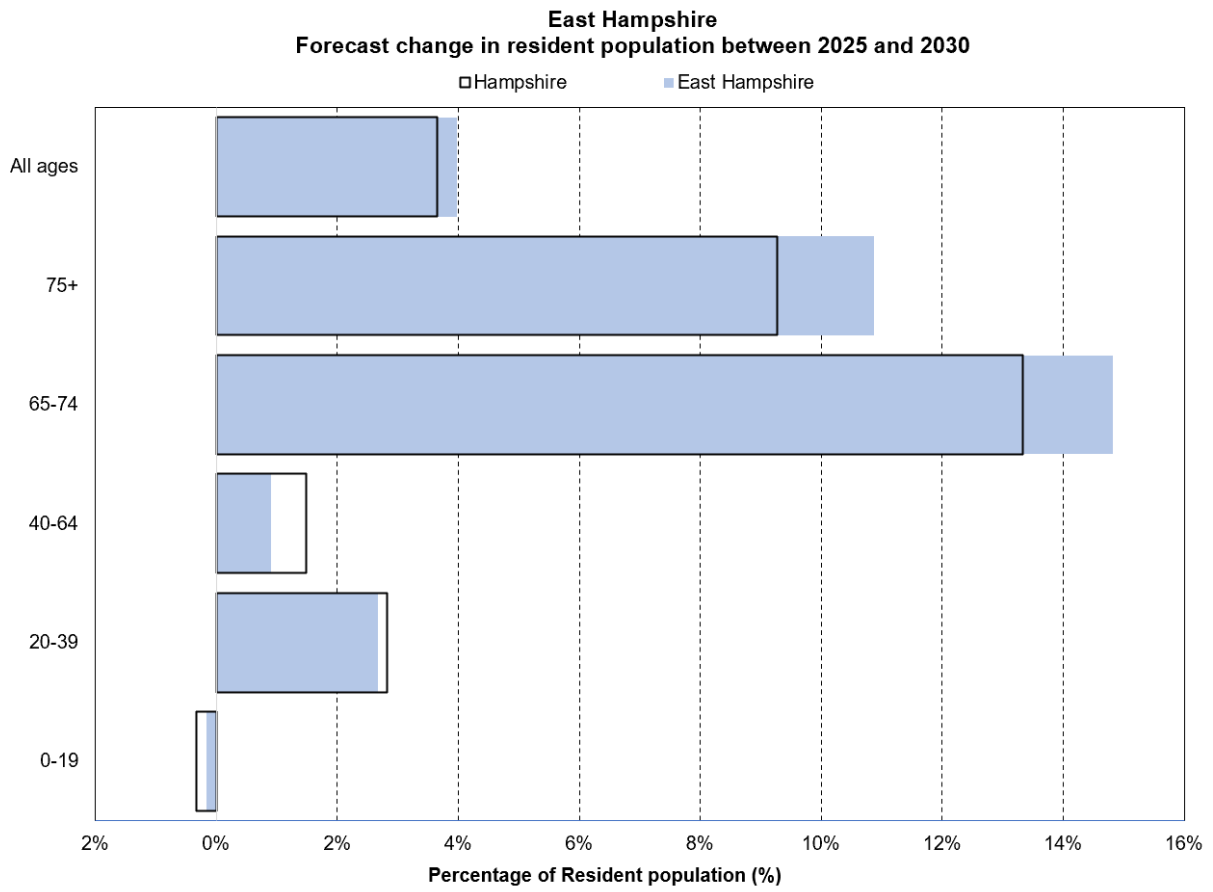
Over the next five years there is a forecast growth of 5,220 people in East Hampshire, a proportional increase of 4%. The largest proportional and absolute increase forecast was in the 65-74 age group. This segment of the population is predicted to increase by 2,260 people, representing an increase of 15%, see figure 5. There is a growth of 3,000 dwellings (5.3% change) predicted between 2025 and 2030. The biggest growth in population is predicted to be to just to the west of Bordon and the biggest growth in the number of dwellings is expected to be in the same area.

Figure 4 - Population Age and Sex Structure 2025: East Hampshire compared to Hampshire



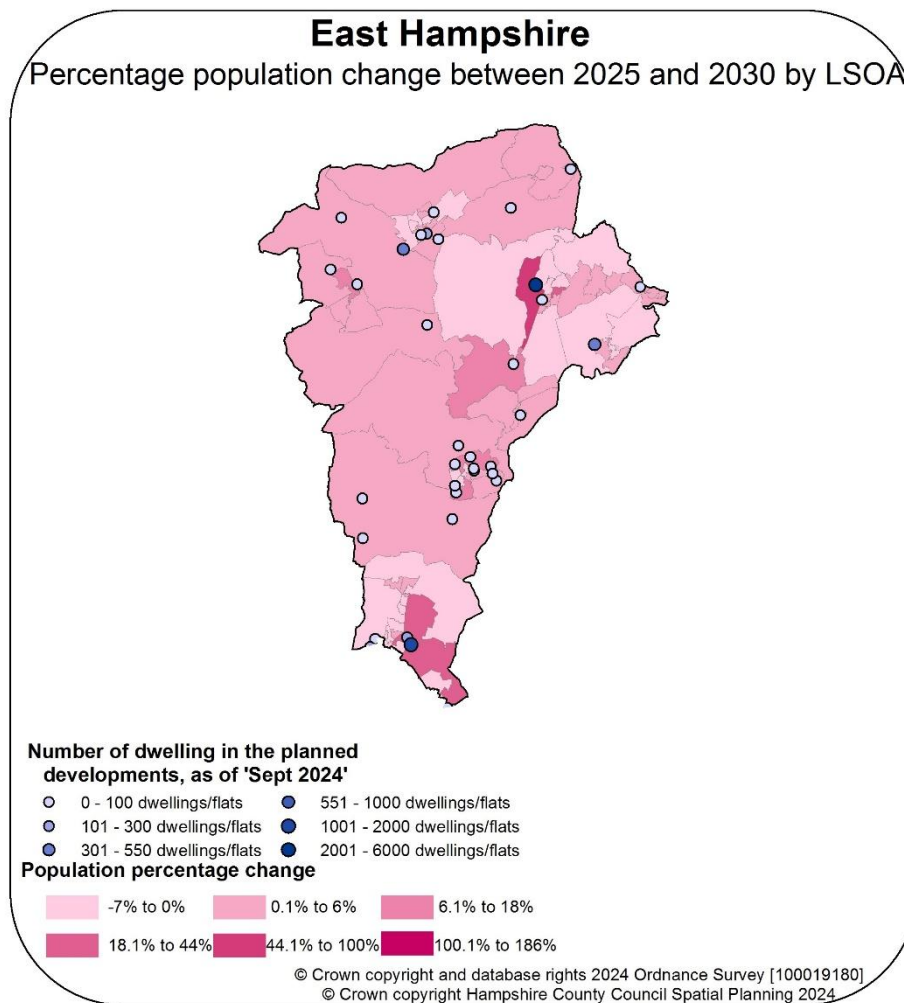
Source - Hampshire County Council Small Area Population Forecasts, 2023-based

Figure 5 – Forecast change in resident population between 2025 and 2030: East Hampshire & Hampshire



Source - Hampshire County Council Small Area Population Forecasts, 2023-based

Map 3 – Planned developments in East Hampshire from 2025 onwards



## Pharmacy Provision

As at September 2024, there are 18 community pharmacies in East Hampshire, this includes two 100-hour pharmacies. There are also five dispensing GP practices in East Hampshire.

Across the district, four pharmacies are open after 18:30 on weekdays. Two pharmacies are open until 21:00 and there is early morning provision provided by four pharmacies (one open from 08:00 and three from 08:30).

Weekend coverage in the area is good, with 15 pharmacies open on Saturday, covering hours from 08:30 to 21:00. Six of these pharmacies closed between 12:00 and 13:00. There are three pharmacies open on a Sunday in East Hampshire with one providing provision into the early evening, closing at 19:00. Within East Hampshire, there is one dispensing practice in Liss, one in Four Marks, one in Liphook, one in Rowlands Castle, and one in Medstead. There are three pharmacies located close to the urgent treatment centre at Petersfield Community Hospital, one of which is open seven days a week.

98.8% of East Hampshire's resident population live within 5 road miles of a pharmacy within the district. Areas further than 5 miles from a pharmacy are of low population density, see map 4 and figure 6. The west of the area can access additional services across the border in New Alresford and Denmead in Winchester district. The south of the district is served by pharmacies in Horndean (within East Hampshire) and additional services across the border in Havant district. The northeast of the district around Bentley and Holt Pound has good access to services across the border with three pharmacies in Fareham and one pharmacy in Lower Bourne

The majority of the housing development is in three towns in the district; Bordon, currently served by two pharmacies with further provision in Headley village to the north, Alton, where residents have access to a community pharmacy situated next to the development site and Liphook, where residents have access to a pharmacy within the town.

There is good provision of pharmacy cover in East Hampshire matching current need and future planned population growth. There are no identified needs for improvement and better access.

Map 4 – East Hampshire pharmacies and area within 5 miles travel distance

### Hampshire Pharmaceutical Needs Assessment 2025-28 Travel distances from pharmacies - East Hampshire

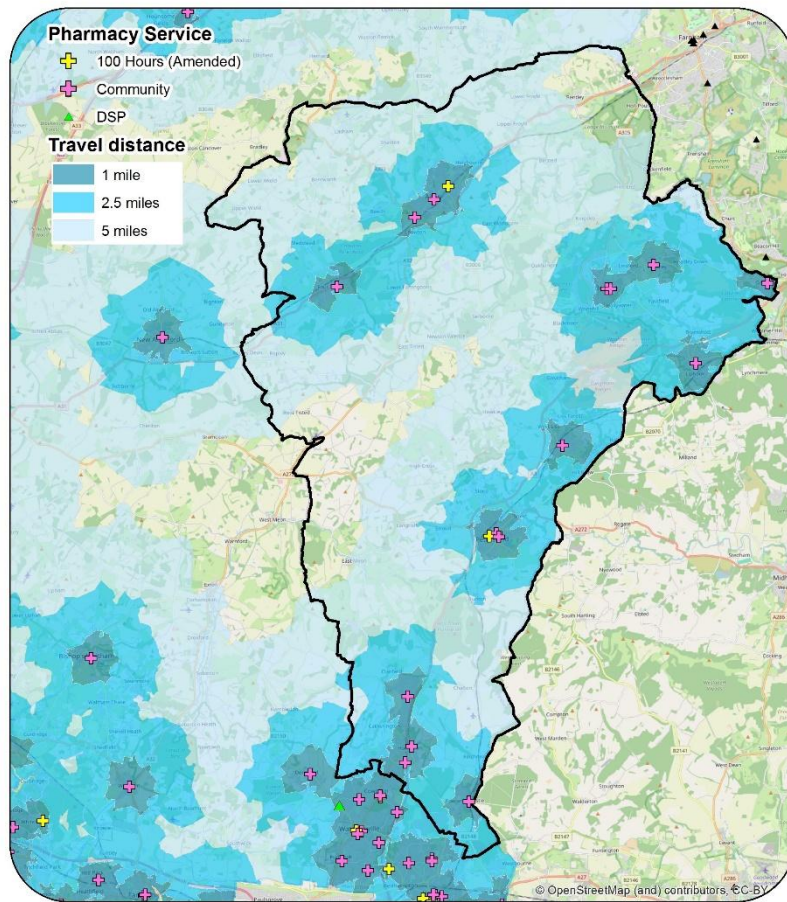
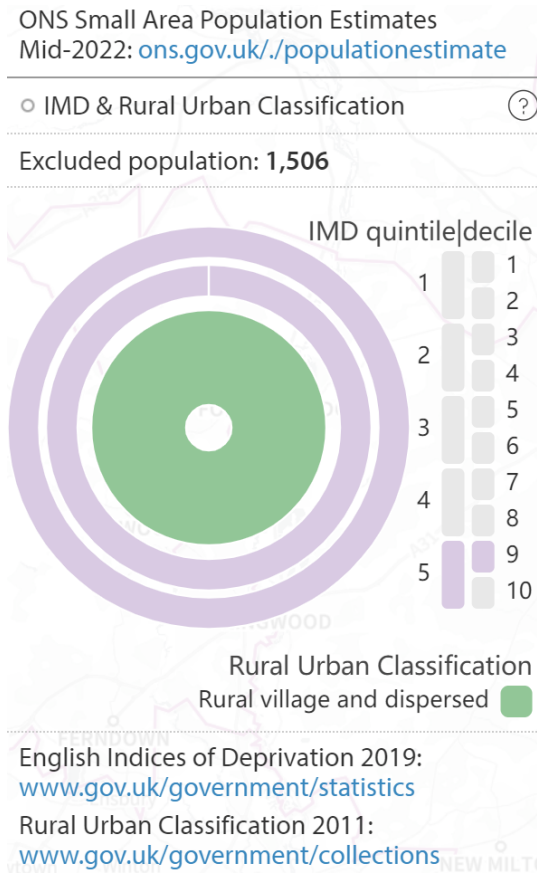
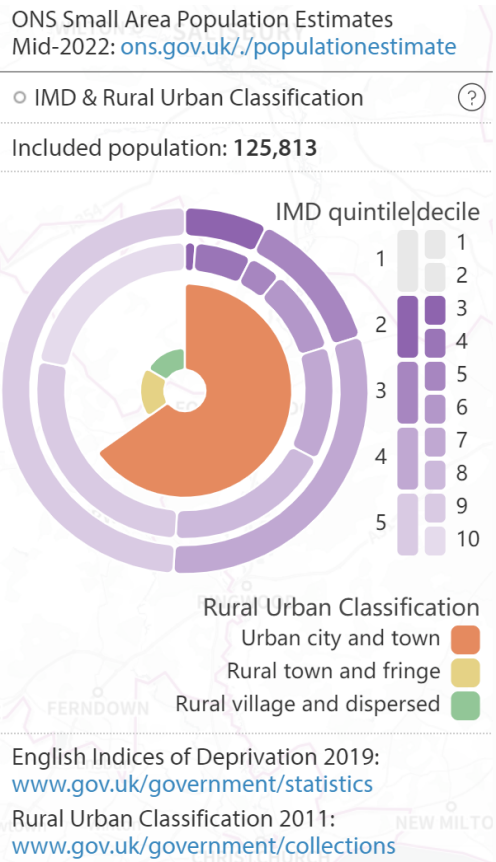


Figure 6 - Charts illustrating the characteristics of the included and excluded population of East Hampshire within 8 km / 5 miles distance of a pharmacy by car



## **Eastleigh**

In 2025, Eastleigh is estimated to have a population of around 143,550, of which 21.1% are aged 65 years and over. This is slightly younger than the Hampshire average, where approximately 23.5% of the population is aged over 65. Eastleigh has a larger proportion of its residents aged between 25-49 years old than the Hampshire average and a smaller proportion of older residents aged above 70 years old, see figure 7. Data from the 2021 Census reports 88.1% of Eastleigh's resident population are of ethnic group 'White British' and 11.9% report their ethnicity as being from ethnic minority groups. This is similar to the Hampshire average of 12.1%.

The population density is 1712.1 people per square kilometre, which is higher than the overall population density of Hampshire (380.8). Eastleigh is an urban area with around 92% of the population living in areas defined as urban city and town. The remaining 8% of the population live in areas classified as rural town and fringe, which are located around Netley.

Deprivation is lower than England and very similar to Hampshire as a whole. There are areas of greater deprivation in central and south Eastleigh town, Bishopstoke and Bursledon towards the south of the district. As of 2023, 10.6% of children were living in income deprived households and 4.4% of people aged 60+ claimed pension credit in February 2024. Both measures were significantly lower than the national averages of 19.7% and 7.6% respectively.

The health of people in Eastleigh is generally better than the England average. 16% of the population described themselves as disabled under the Equality Act compared to 17.3% nationally. 3.8% of the district's population described their health as 'bad or very bad' compared to 5.2% describing their health in this way nationally.

Figures for 2020-2022, show that life expectancy for men (81.4 years) and women (84.6 years) resident in Eastleigh is higher than the England average. There are inequalities across the district with a difference of 6.3 years between male life expectancy in the most and least deprived deciles of the district and a corresponding difference of 3.8 years for females. Looking at healthy life expectancy for all persons in 2018-2022, Eastleigh (69.2 years) ranked similar to the Hampshire average (69.3 years). By examining the difference between life expectancy and healthy life expectancy, the number of years lived in poor health can be estimated. Eastleigh (14.0 years) ranked similar to the Hampshire average (13.7 years).

## **Future growth**

Over the next five years there is a forecast growth of 7,760 people in Eastleigh, representing a proportional increase of 5.4%, which is the second largest across Hampshire. The largest proportional increase forecast was in the 65-74 age group. This segment of the population is predicted to increase by 13%, see figure 8. The largest absolute increase was in the 40-64 year old age group, with an increase of

2,100 people. There is a growth of 3,810 dwellings (6.1% change) predicted between 2025 and 2030. The biggest growth in population is predicted to be to the south of Fair Oak near Horton Heath and around Boorley Green. The biggest increase in the number of dwellings is expected to be in the same areas.

Figure 7 - Population Age and Sex Structure 2025: Eastleigh compared to Hampshire

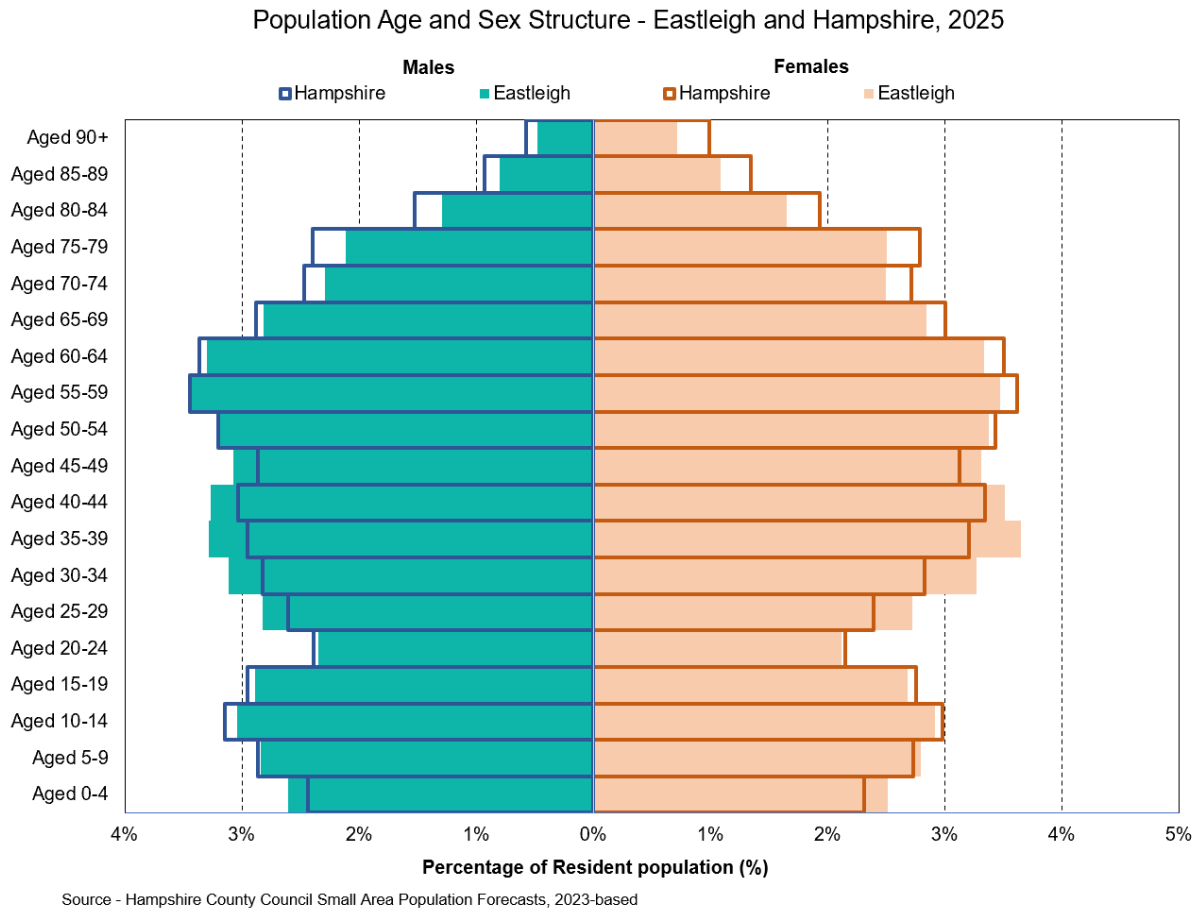
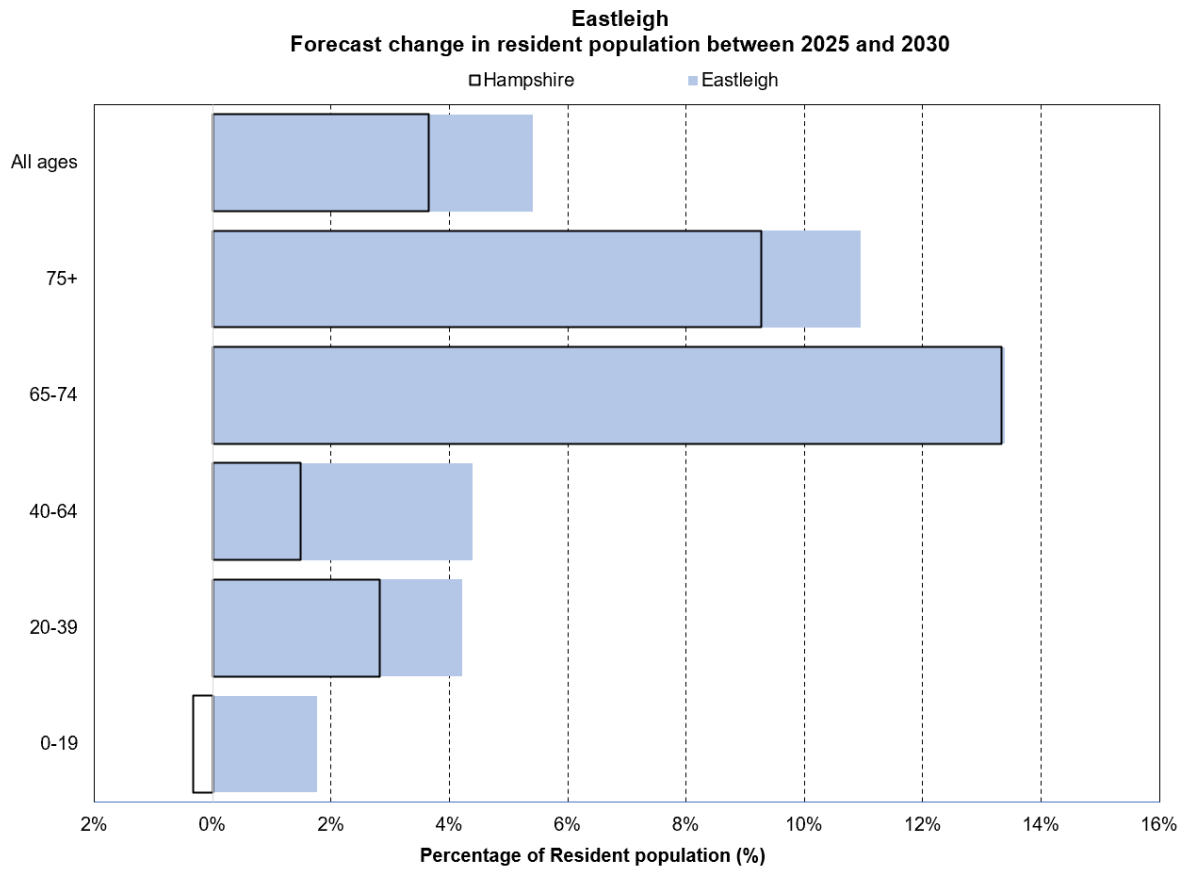
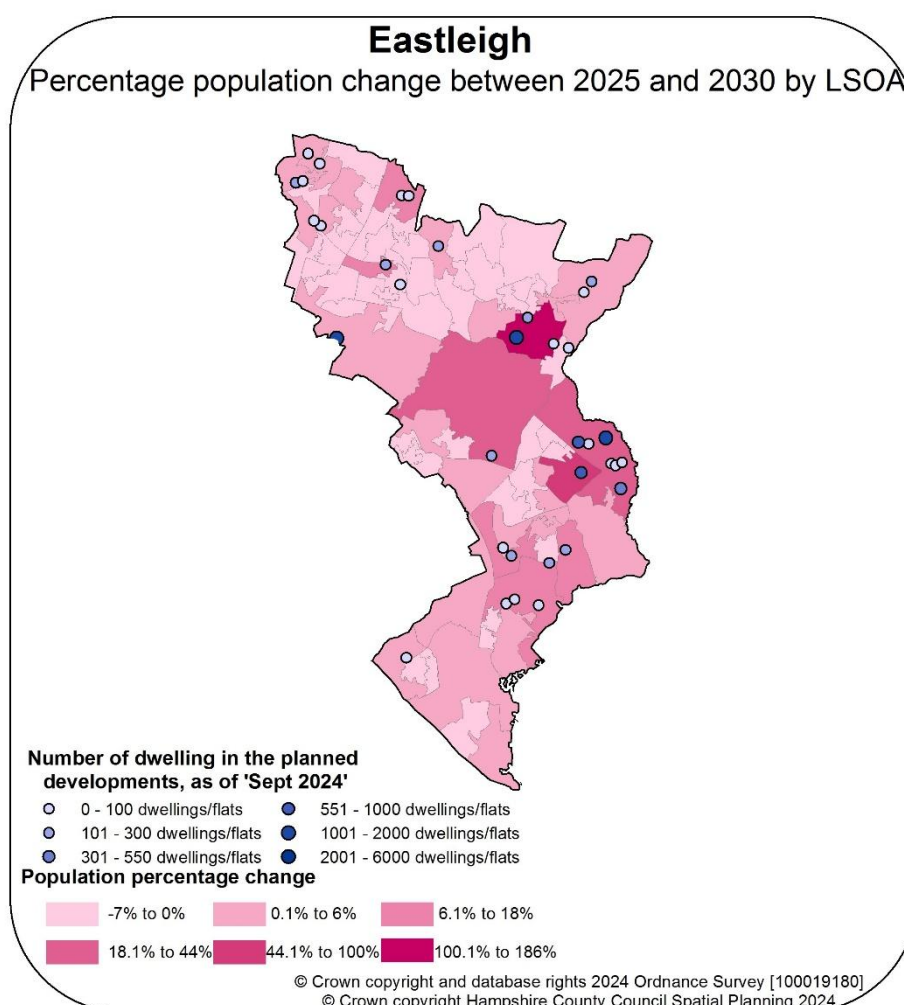


Figure 8 – Forecast change in resident population between 2025 and 2030: Eastleigh & Hampshire



Source - Hampshire County Council Small Area Population Forecasts, 2023-based

Map 5 – Planned developments in Eastleigh from 2025 onwards



## Pharmacy Provision

As at September 2024, there are 20 community pharmacies on a standard 40 hour contract serving Eastleigh, providing services from 08:15 to 20:00 on weekdays from various sites across the district. There is also one distance selling pharmacy. Five pharmacies are open after 18:30 during the working week and there is no pharmacy open after 20:00. 19 pharmacies open on a Saturday with two opening into the evening, closing at 20:00. Two sites are open on a Sunday during the day, the latest closing time is 16:00, with weekend out of hours provision from Southampton which is also the location of the nearest out of hours GP service. 100% of the resident population of Eastleigh district is within 2.5 road miles of a pharmacy within Eastleigh, see map 6. There are new housing developments near Boorley Green which have access to nearby pharmacies in Botley and Shamblehurst. These pharmacies are open every weekday and on Saturday mornings. The new housing development near Horton Heath will have access to two pharmacies in nearby Fair Oak. These pharmacies are both open every weekday and on Saturdays.

There is good provision of pharmacy cover in Eastleigh matching current need and future planned population growth. There are no identified needs for improvement and better access.

Map 6 – Eastleigh pharmacies and area within 5 miles travel distance

### Hampshire Pharmaceutical Needs Assessment 2025-28 Travel distances from pharmacies - Eastleigh

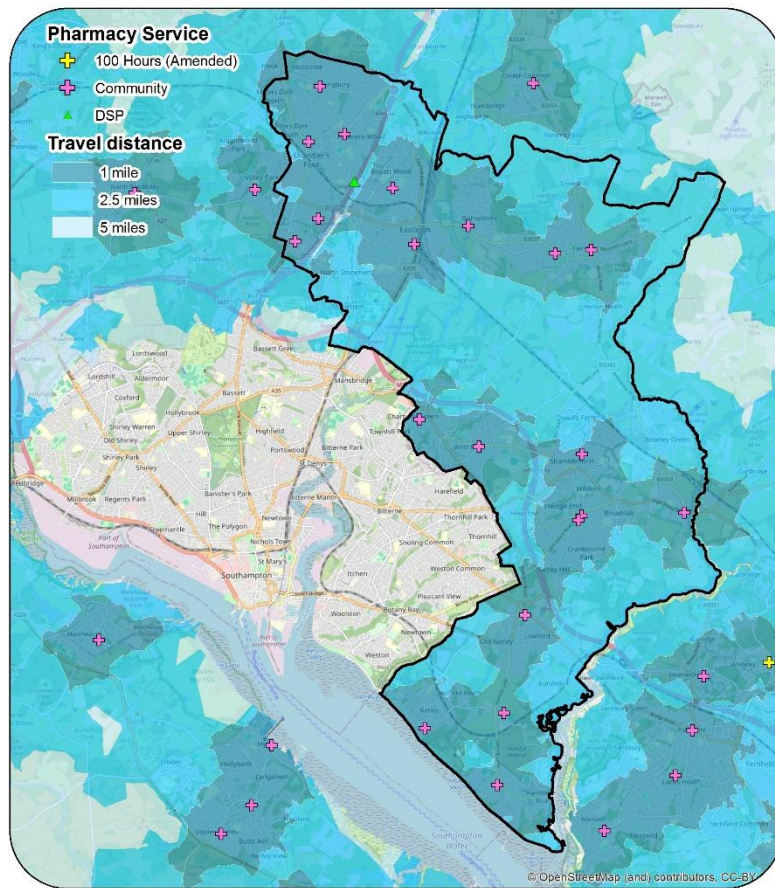
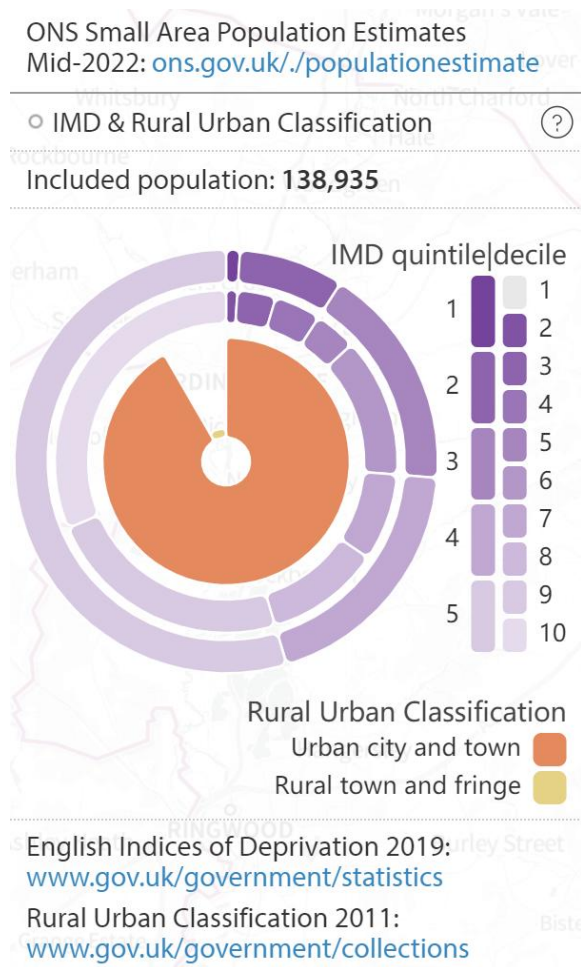


Figure 9 - Charts illustrating the characteristics of the included and excluded population of Eastleigh within 8 km / 5 miles distance of a pharmacy by car



## **Fareham**

In 2025, Fareham is estimated to have a population of around 117,600, of which 25.2% are aged 65 years and over. This is slightly older than the Hampshire average, where approximately 23.5% of the population is aged over 65. The population structure is slightly older than the Hampshire population as a whole, with fewer younger people aged 0 to 19 years and a greater proportion of older people aged 50 to 75 years, see figure 10. Data from the 2021 Census reports 92.8% of Fareham's resident population are of ethnic group 'White British' and 7.2% report their ethnicity as being from ethnic minority groups. This is a lower proportion than Hampshire overall (12.1%).

The population density is 1542.1 people per square kilometre, which is higher than the overall population density of Hampshire (380.8). Fareham is an urban area with the entire population of the district resident in areas classified as urban city or town.

Deprivation is lower than England and Hampshire as a whole. However, there are some areas of greater deprivation located to the south and north west of Fareham town and towards Titchfield. As of 2023, 9.6% of children were living in income deprived households and 4.1% of people aged 60+ claimed pension credit in February 2024. Both measures were significantly lower than the national averages of 19.7% and 7.6% respectively.

The health of people in Fareham is generally better than the England average. 16.8% of the population described themselves as disabled under the Equality Act compared to 17.3% nationally. 4.0% of the district's population described their health as 'bad or very bad' compared to 5.2% describing their health in this way nationally.

Figures for 2020-2022, show that life expectancy for men (81.4 years) and women (84.1 years) resident in Fareham is higher than the England average. There are inequalities across the district with a difference of 5.4 years between male life expectancy in the most and least deprived deciles of the district and a corresponding difference of 5.1 years for females. Looking at healthy life expectancy for all persons in 2018-2022, Fareham (70.0 years) ranked higher than the Hampshire average (69.3 years). By examining the difference between life expectancy and healthy life expectancy, the number of years lived in poor health can be estimated. Fareham (13.2 years) ranked lower than the Hampshire average (13.7 years).

## **Future growth**

Over the next five years there is a forecast growth of 7,030 people in Fareham, a proportional increase of 6%, the largest increase across the Hampshire districts. The largest proportional and absolute increase forecast was in the 65-74 age group. This segment of the population is predicted to increase by 1,940 people, representing an increase of 14%, see figure 11. There is a growth of 3,580 dwellings (6.9% change) predicted between 2025 and 2030, which is the third biggest proportional increase

across Hampshire. The biggest growth in population and dwellings is predicted to be to just north of Fareham around Funtley.

Figure 10 - Population Age and Sex Structure 2025: Fareham compared to Hampshire

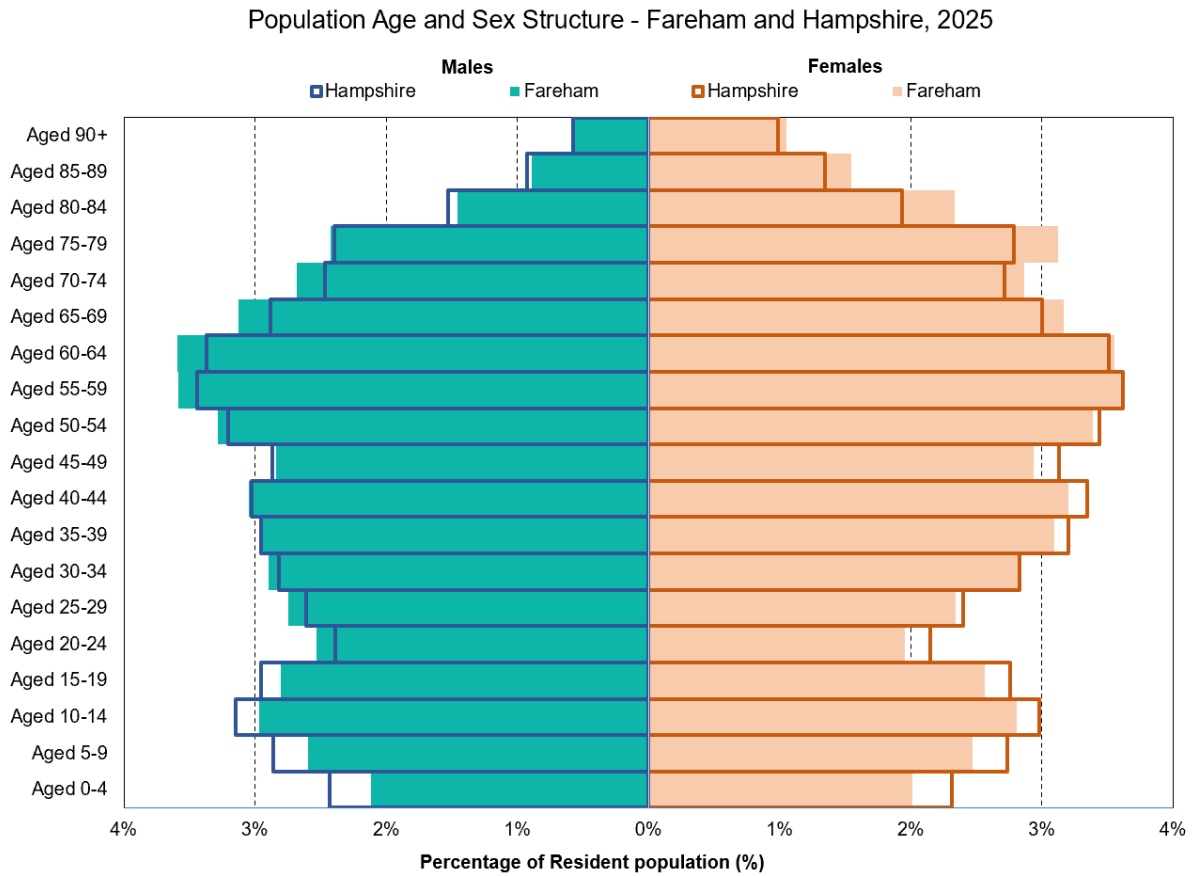
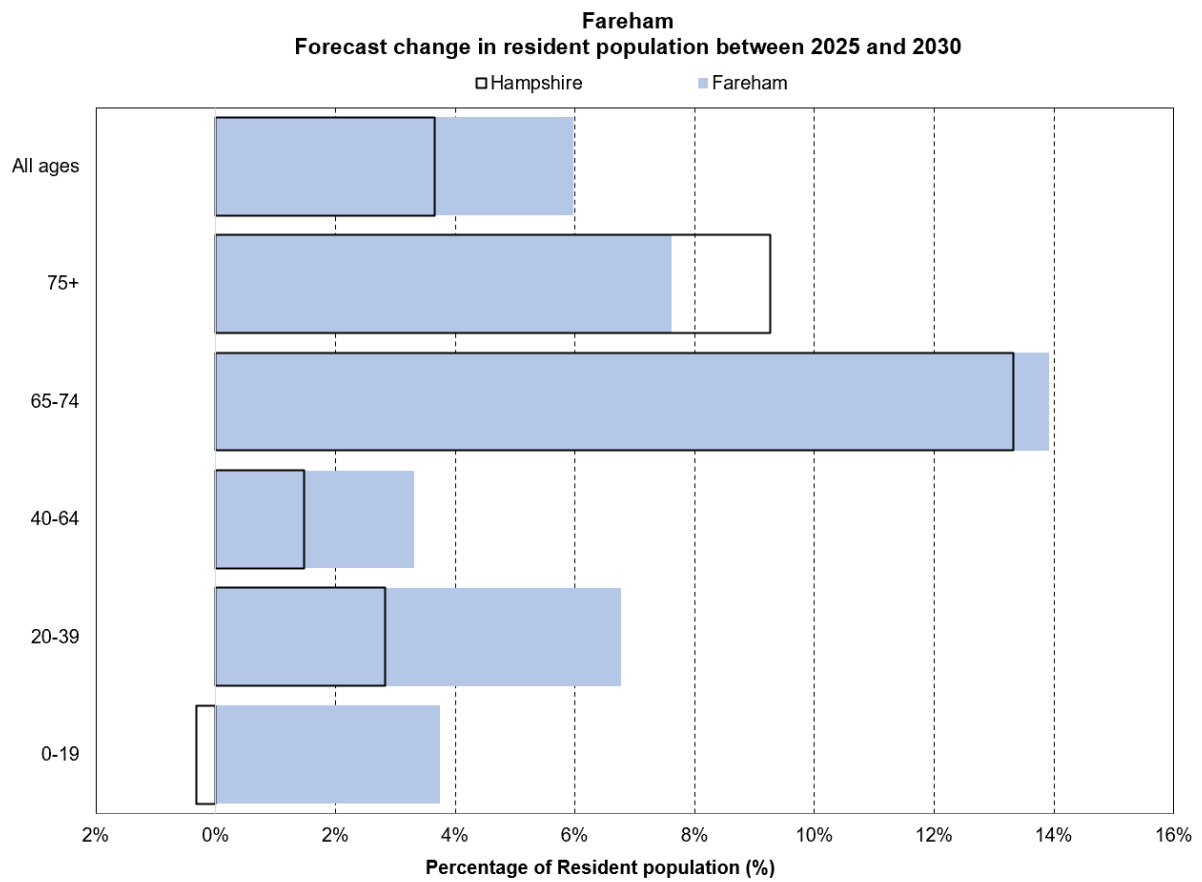
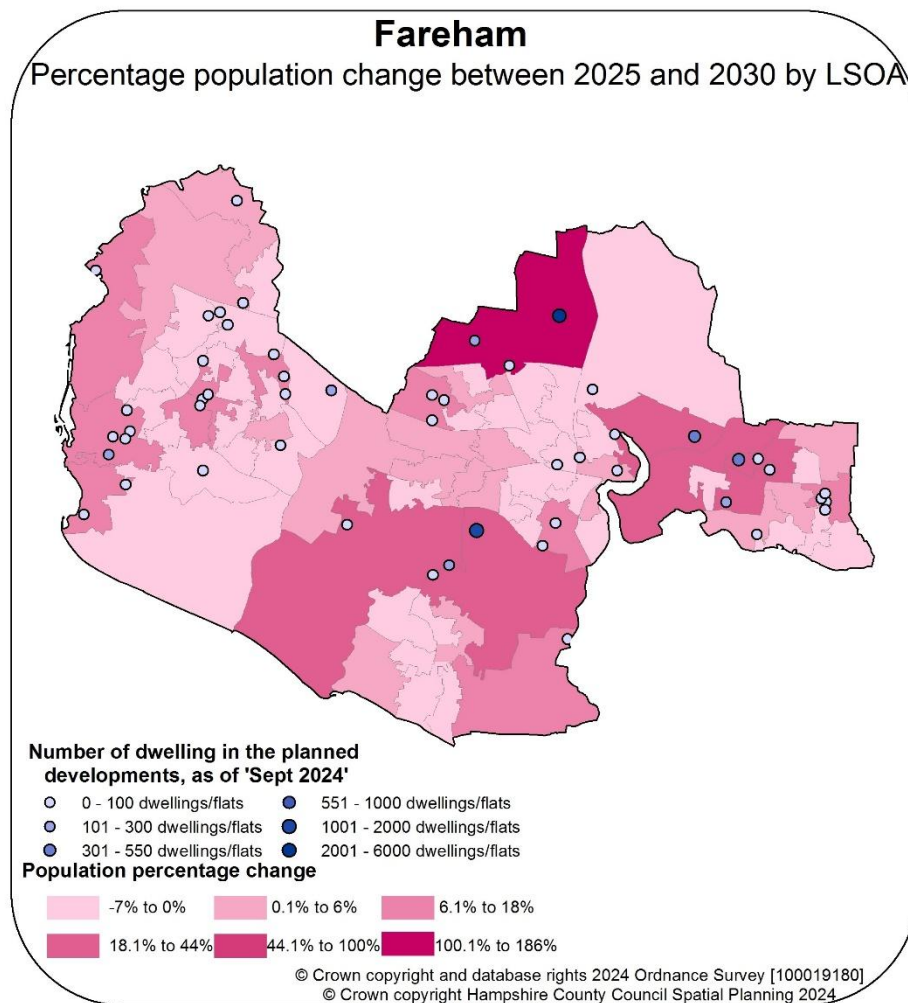


Figure 11 – Forecast change in resident population between 2025 and 2030: Fareham & Hampshire



Source - Hampshire County Council Small Area Population Forecasts, 2023-based



## Pharmacy Provision

As at September 2024, Fareham is served by 14 pharmacies with good weekday provision, three are open after 18:30, with one pharmacy open until 19:00 and two open until 21:00. Early morning provision before 09:00 is covered by five pharmacies. Provision across Fareham district includes two 100-hour pharmacies.

Over the weekend all except one pharmacy is open on a Saturday with five closing at lunchtime (at 13:00 or before), six open all day (closing at 17:00 or a little after) and two open late into the evening. Four pharmacies open on a Sunday with early morning (10:00 or before) provision. 100% of the district's population is within 2.5 miles road travel of a pharmacy within Fareham, see map 8.

There is a new housing development based in West End, Fareham which can access a pharmacy in West End, Fareham that is open every weekday and Saturday from 09:00 to 17:30 (17:00 on Saturday). There is also a new housing development in Welborne. This housing development is located between five pharmacies, with three pharmacies located in Fareham, one located in Hill Park, and one located in Wickham.

There is good provision of pharmacy cover in Fareham matching current need and future planned population growth. There are no identified needs for improvement and better access.

Map 8 – Fareham pharmacies and area within 5 miles travel distance

### Hampshire Pharmaceutical Needs Assessment 2025-28 Travel distances from pharmacies - Fareham

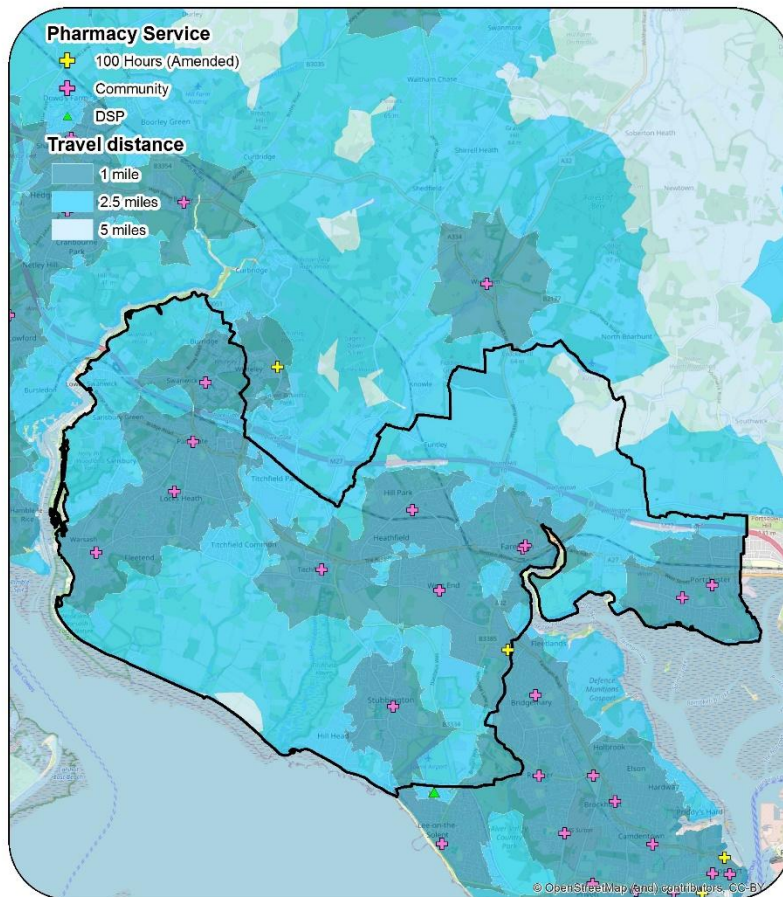
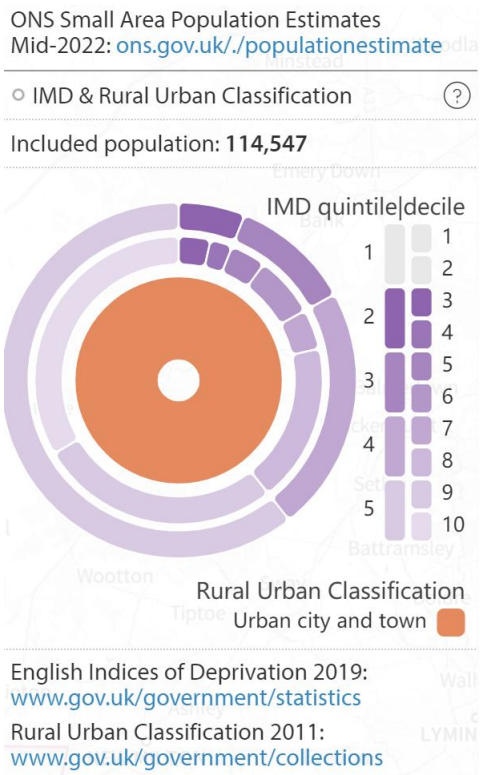


Figure 12 - Charts illustrating the characteristics of the included and excluded population of Fareham within 8 km / 5 miles distance of a pharmacy by car



## **Gosport**

In 2025, Gosport is estimated to have a population of around 83,700, of which 22.3% are aged 65 years and over. This is slightly younger than the Hampshire average, where approximately 23.5% of the population is aged over 65. The district has a younger population age and sex structure than Hampshire. When compared to Hampshire, Gosport has a higher proportion of younger working age people. The district also has a lower proportion of older people aged 70 years and over, see figure 13. Data from the 2021 Census reports 92.4% of Gosport's resident population are of ethnic group 'White British' and 7.6% report their ethnicity as being from ethnic minority groups. This is a lower proportion than Hampshire overall (12.1%).

The population density is 3229.8 people per square kilometre, which is higher than the overall population density of Hampshire (380.8). Gosport is the most densely populated district within Hampshire. Gosport is an urban area with the whole population living in areas classified as urban city or town.

Deprivation is lower than England but higher than in Hampshire as a whole. There are areas of greater deprivation in the town centre of Gosport, Grange and Forton. As of 2023, 17.6% of children were living in income deprived households and 6.5% of people aged 60+ claimed pension credit in February 2024. Both measures were lower than the national averages of 19.7% and 7.6% respectively.

The health of people in Gosport is generally worse than the England average. 20.4% of the population described themselves as disabled under the Equality Act compared to 17.3% nationally. 5.5% of the district's population described their health as 'bad or very bad' compared to 5.2% describing their health in this way nationally.

Figures for 2020-2022, show that life expectancy for men (79.3 years) and women (82.1 years) resident in Gosport is similar to the England average. There are inequalities across the district with a difference of 4.9 years between male life expectancy in the most and least deprived deciles of the district and a corresponding difference of 5.4 years for females. Looking at healthy life expectancy for all persons in 2018-2022, Gosport (64.6 years) ranked lower than the Hampshire average (69.3 years). By examining the difference between life expectancy and healthy life expectancy, the number of years lived in poor health can be estimated. Gosport (16.2 years) ranked higher than the Hampshire average (13.7 years).

## **Future growth**

Over the next five years there is a forecast growth of 1,520 people in Gosport and a proportional increase of 1.8%, which is the second smallest across Hampshire. The largest proportional and absolute increase forecast was in the 65-74 age group. This segment of the population is predicted to increase by 1,210 people, representing an increase of 13%, see figure 14. There is a growth of 1,020 dwellings (2.6% change) predicted between 2025 and 2030, which is the second smallest proportional increase

across Hampshire. The biggest growths in population and dwelling numbers are predicted to be in the areas of Lee-on-the-Solent and south of Gosport town near Haslar.

Figure 13 - Population Age and Sex Structure 2025: Gosport compared to Hampshire

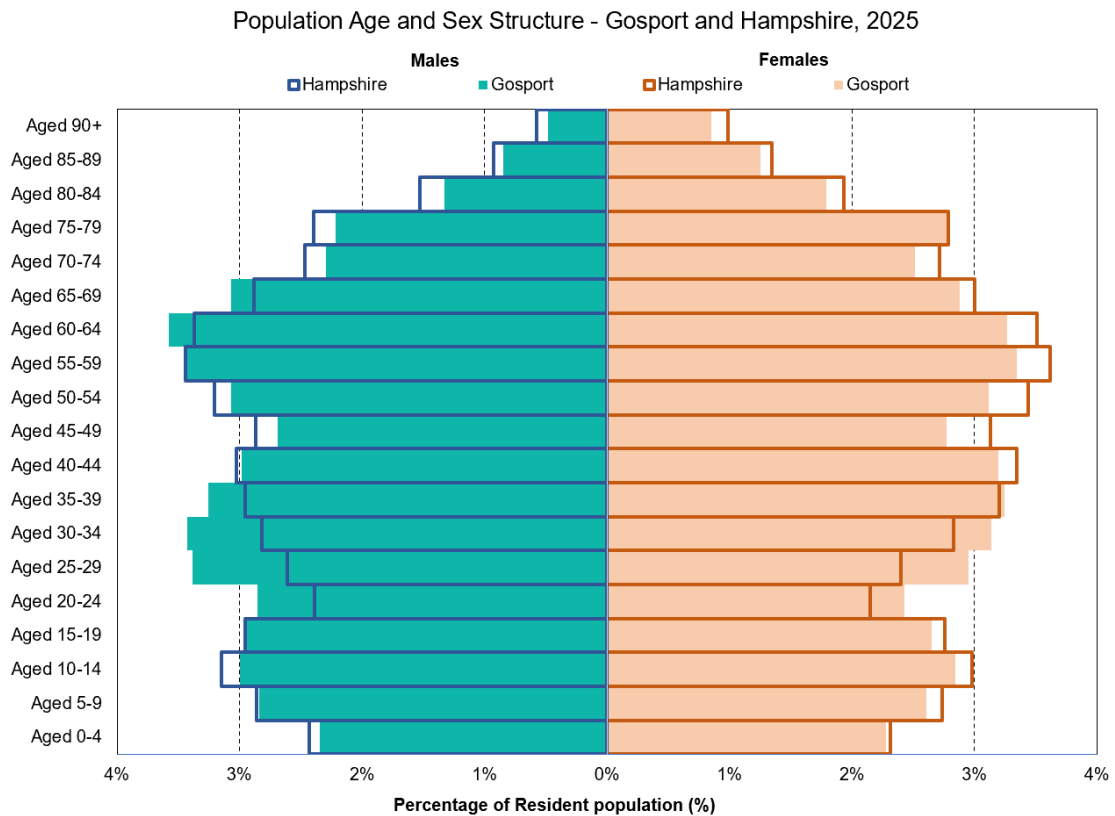
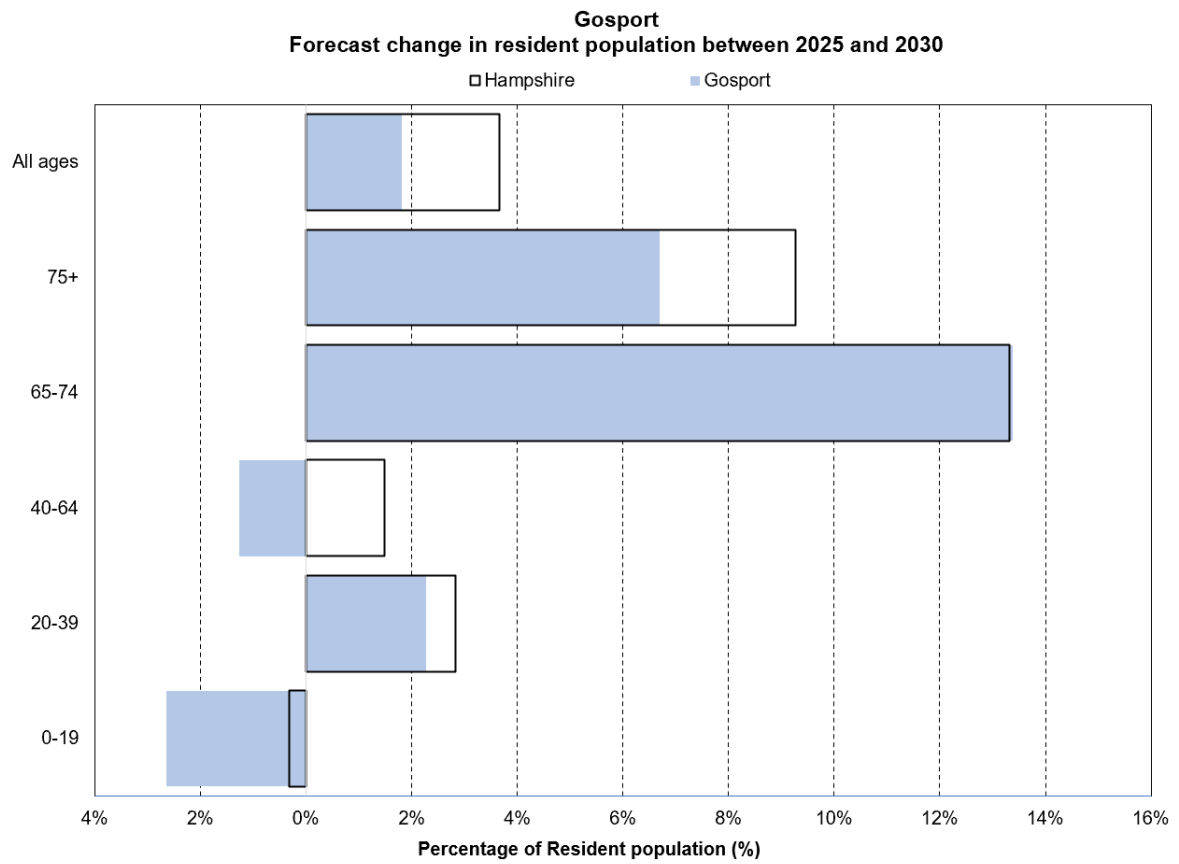
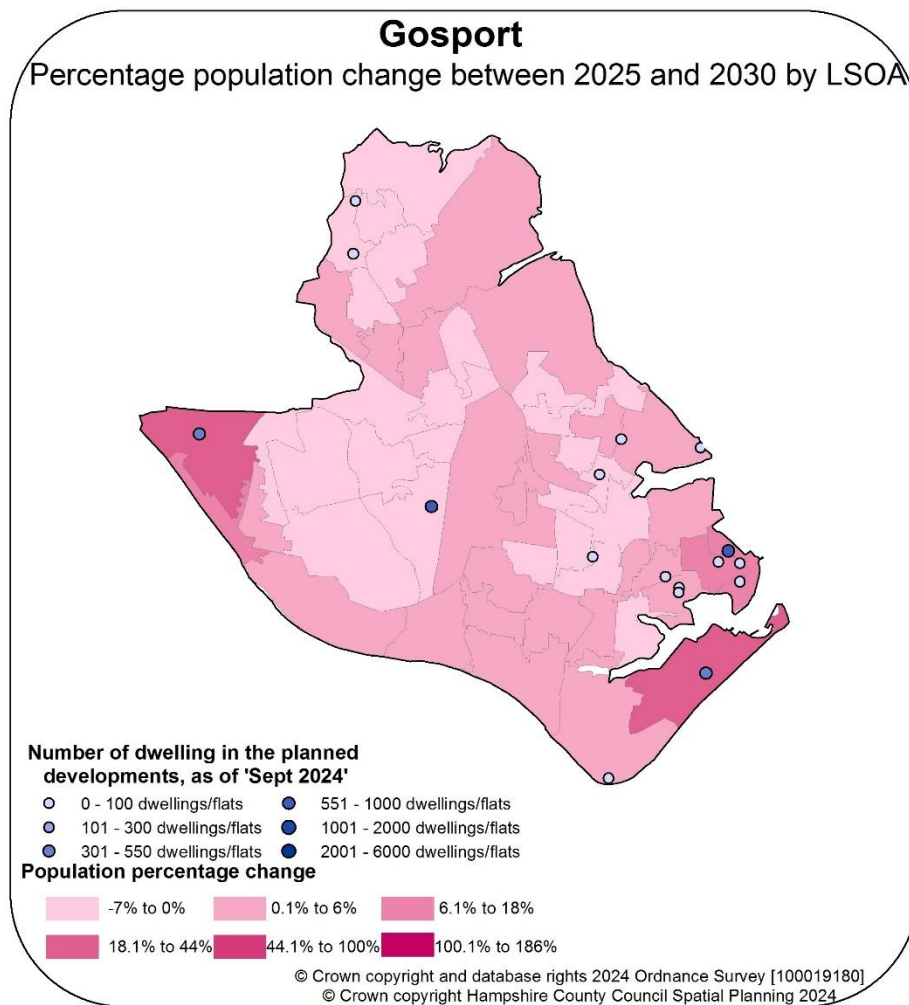


Figure 14 – Forecast change in resident population between 2025 and 2030: Gosport & Hampshire



Source - Hampshire County Council Small Area Population Forecasts, 2023-based



## Pharmacy Provision

As at September 2024, 14 community pharmacies serve the Gosport area, including two 100-hour pharmacies. There is one distance selling pharmacy located in Gosport. Four pharmacies are open after 18:30 on weekdays with two open until 21:00. There is early morning provision in the area with two pharmacies across the district opening at 08:30. 11 of the 14 open on a Saturday, with three offering evening provision after 18:00. Two pharmacies offer provision within the district on a Sunday including evening opening until 23:00. 100% of the borough resident population live within 2.5 road miles of a pharmacy within Gosport, see map 10. Areas outside of this on the map below are predominantly non-residential including a nature reserve, golf courses, a Navy armament depot and naval base, the old hospital grounds and a business park.

The new housing development in Gosport Waterfront is close to a number of pharmacies located in Gosport, including the one 100-hour pharmacy. There is also a new housing development in Rowner. This is served by a pharmacy to the south of the area which is open 08:30-13:00 and 14:00-18:30, Monday to Saturday. Urgent

treatment services are provided at Gosport War Memorial hospital for this area with closely aligned pharmacy provision.

There is good provision of pharmacy cover in Gosport matching current need and future planned population growth. There are no identified needs for improvement and better access.

Map 10 – Gosport pharmacies and area within 5 miles travel distance

### Hampshire Pharmaceutical Needs Assessment 2025-28 Travel distances from pharmacies - Gosport

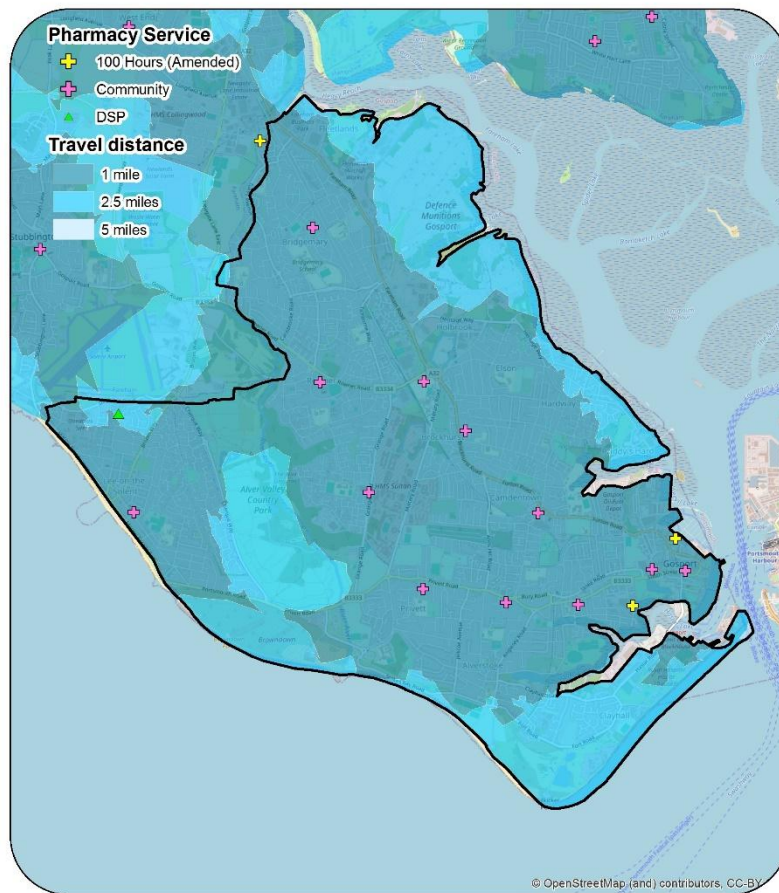
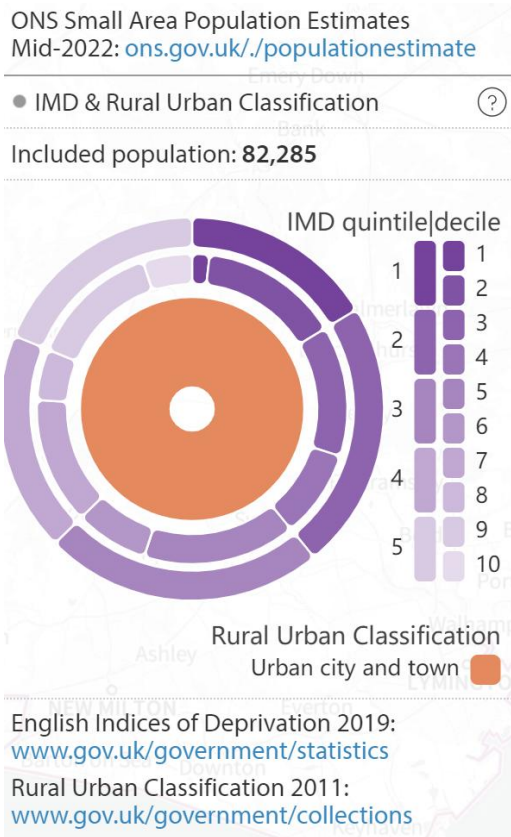


Figure 15 - Charts illustrating the characteristics of the included and excluded population of Gosport within 8 km / 5 miles distance of a pharmacy by car



## **Hart**

In 2025, Hart is estimated to have a population of around 105,200, of which 21.4% are aged 65 years and over. This is slightly younger than the Hampshire average, where approximately 23.5% of the population is aged over 65. The current Hart population structure also shows slightly lower proportions of older cohorts in general, aged 60 years and over, see figure 16. Data from the 2021 Census reports 86.9% of Hart's resident population are of ethnic group 'White British' and 13.1% report their ethnicity as being from ethnic minority groups. This is a higher proportion than Hampshire overall (12.1%).

The population density is 461.8 people per square kilometre, which is lower than the overall population density of Hampshire (380.8). Fleet is the main urban area, with an additional urban area in the north of the district around Yateley. These areas hold 64% of the district population. A further 20% of the population live in rural town and fringe areas, whilst the remaining 16% are in rural villages.

Deprivation is lower than in England and in Hampshire as a whole. Overall, Hart district has a high level of affluence, the most deprived areas in the district are in Yateley and in the area centred around the villages of Heckfield and Hound Green to the north west of the district. As of 2023, 6.1% of children were living in income deprived households and 3.2% of people aged 60+ claimed pension credit in February 2024. Both measures were significantly lower than the national averages of 19.7% and 7.6% respectively.

The health of people in Hart is generally better than the England average. 12.9% of the population described themselves as disabled under Equality Act compared to 17.3% nationally. 2.8% of the district's population described their health as 'bad or very bad' compared to 5.2% describing their health in this way nationally.

Figures for 2020-2022, show that life expectancy for men (83.7 years) and women (86.1 years) resident in Hart is higher than the England average. There are inequalities across the district with a difference of 1.7 years between male life expectancy in the most and least deprived deciles of the district and a corresponding difference of 0.6 years for females. Looking at healthy life expectancy for all persons in 2018-2022, Hart (73.1 years) ranked higher than the Hampshire average (69.3 years). By examining the difference between life expectancy and healthy life expectancy, the number of years lived in poor health can be estimated. Hart (11.6 years) ranked lower than the Hampshire average (13.7 years) for this measure.

## **Future growth**

Over the next five years there is a forecast growth of 1,760 people in Hart and a proportional increase of 1.7%, the smallest increase across Hampshire. The largest proportional and absolute increase forecast was in the 65-74 age group. This segment of the population is predicted to increase by 1,360 people, representing an increase of 13%, see figure 17. There is a growth of 1,100 dwellings (2.5% change) predicted

between 2025 and 2030, which is the lowest proportional increase in Hampshire. The biggest growth in the number of dwelling and in population is predicted to be to the east and south of Church Crookham and to the east of Fleet.

Figure 16 - Population Age and Sex Structure 2025: Hart compared to Hampshire

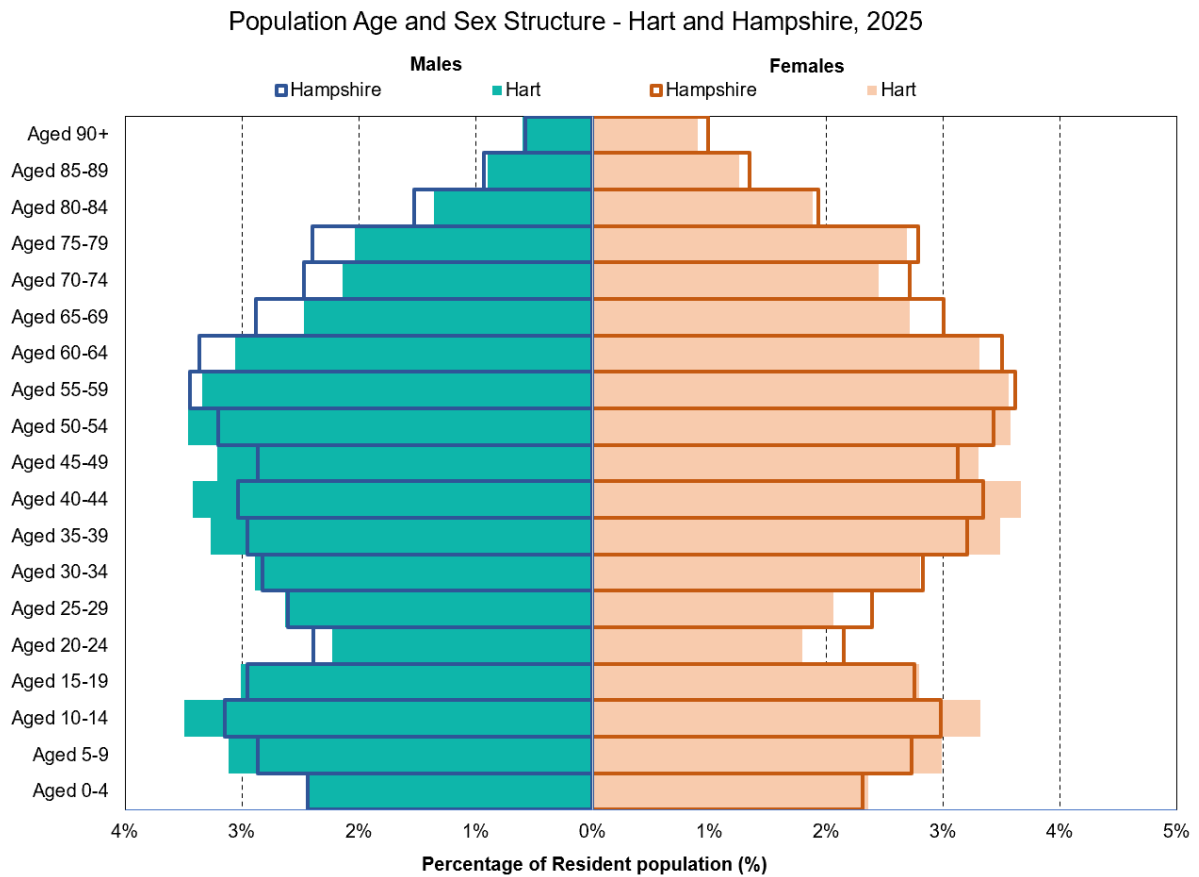
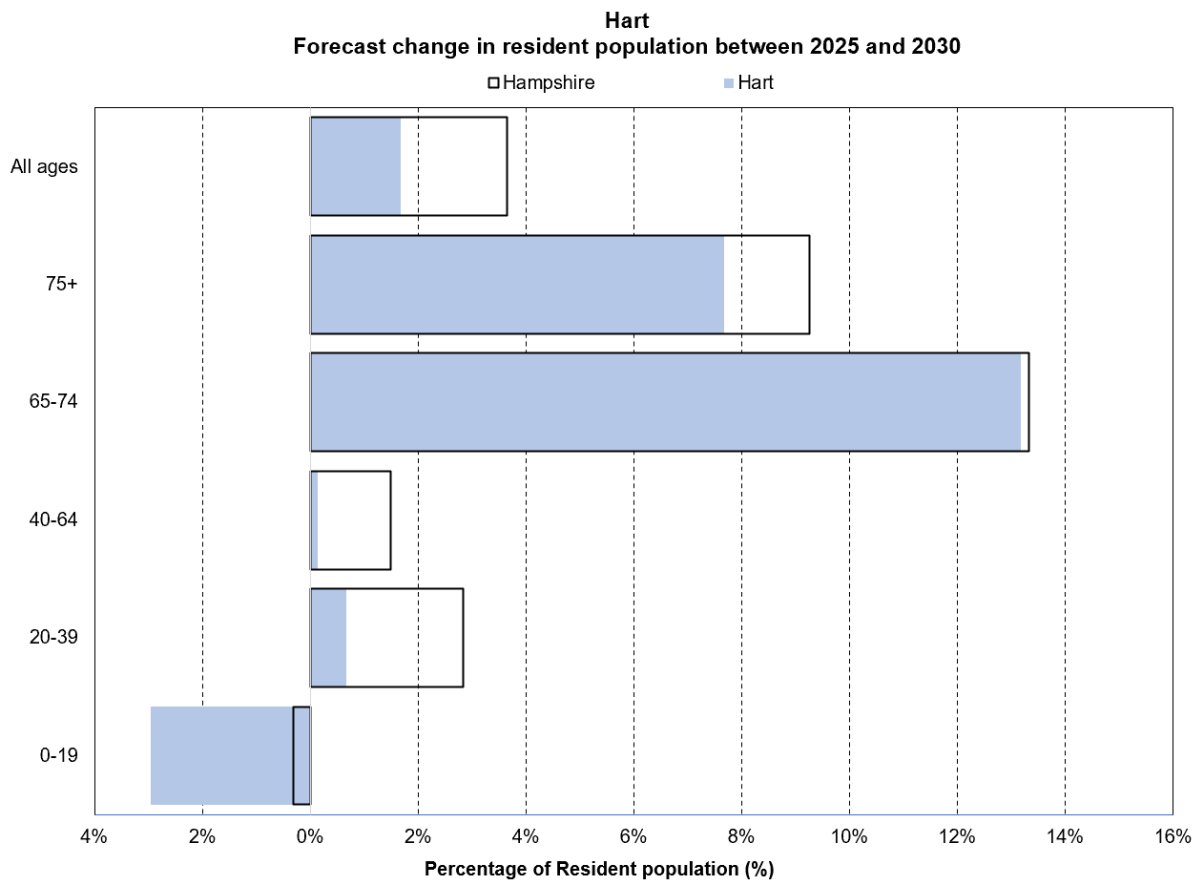
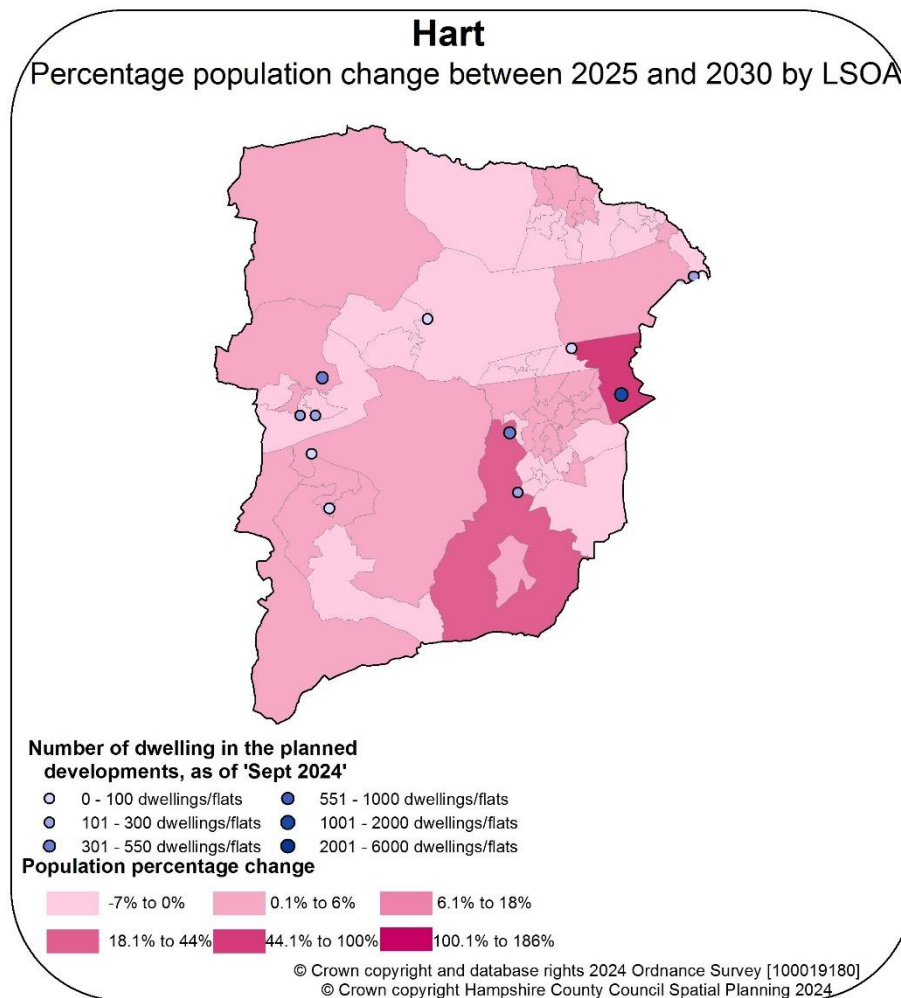


Figure 17 – Forecast change in resident population between 2025 and 2030: Hart & Hampshire



Source - Hampshire County Council Small Area Population Forecasts, 2023-based



## Pharmacy Provision

As at September 2024, there are 17 pharmacies located within the district of Hart. Two 100-hour pharmacies provide good coverage to the main towns of Hook and Fleet into the late evening. There are a further two pharmacies open after 18:30 (four in total) in the evening across the district. There are two pharmacies in Hart providing early morning provision before 09:00, from 08:00 onwards on weekdays.

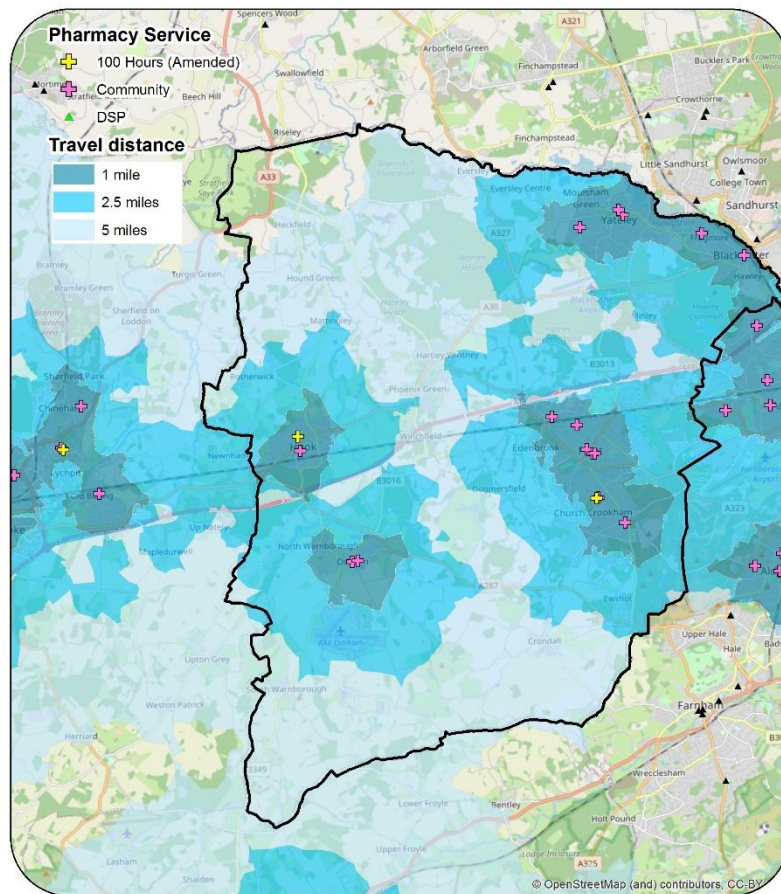
Weekend provision is covered by 16 pharmacies on a Saturday, with five locations open until 17:30 and evening provision available up to 21.00 at two sites. Four pharmacies open on a Sunday with provision into the evening until 21:30 from the 100 hour pharmacy in Hook. 100% of the population is resident within 5 road miles of a pharmacy within Hart. There is a small area with no access to pharmacies within 5 road miles in the north west of the district, which is covered by a local country park, see map 12. North Hampshire Urgent Care provides same day integrated urgent care at Hook Surgery and Farnborough Centre for Health. There is pharmacy provision near the out of hours services and within Hart for prescribed medicines.

The biggest area of growth in Hart is around Hartland to the east of Fleet. The closest pharmacy is located in Southwood which offers good provision, the pharmacy is open every day of the week for at least 6 hours.

There is good provision of pharmacy cover in Hart matching current need and future planned population growth. There are no identified needs for improvement and better access.

Map 12 – Hart pharmacies and area within 5 miles travel distance

### Hampshire Pharmaceutical Needs Assessment 2025-28 Travel distances from pharmacies - Hart



## **Havant**

In 2025, Havant is estimated to have a population of around 129,100, of which 25.5% are aged 65 years and over. This is slightly older than the Hampshire average, where approximately 23.5% of the population is aged over 65. Havant has a slightly older age structure compared to Hampshire, with a smaller proportion of residents aged 35-49 years old, see figure 18. Data from the 2021 Census reports 93.2% of Havant's resident population are of ethnic group 'White British' and 6.8% report their ethnicity as being from ethnic minority groups. This is a lower proportion than Hampshire overall (12.1%).

The population density is 2228.4 people per square kilometre, which is higher than the overall population density of Hampshire (380.8). Havant is an urban area with almost the whole population living in areas classified as urban city or town (97%).

Deprivation is very similar to that reported in England as a whole. However, Havant is the most deprived district in Hampshire with around one third of Lower Super Output Areas (LSOAs) in the most 20% most deprived areas nationally. The areas of greater deprivation are around Leigh Park and Waterlooville. As of 2023, 18.1% of children were living in income deprived households and 6.8% of people aged 60+ claimed pension credit in February 2024. Both measures were lower than the national averages of 19.7% and 7.6% respectively.

The health of people in Havant is generally worse than the England average. 19.9% of the population described themselves as disabled under the Equality Act compared to 17.3% nationally. 5.6% of the district's population described their health as 'bad or very bad' compared to 5.2% describing their health in this way nationally.

Figures for 2020-2022, show that life expectancy for men (79.5 years) and women (83.6 years) resident in Havant is higher than the England average. There are inequalities across the district with a difference of 10.6 years between male life expectancy in the most and least deprived deciles of the district and a corresponding difference of 6.8 years for females. Looking at healthy life expectancy for all persons in 2018-2022, Havant (66.1 years) ranked lower than the Hampshire average (69.3 years). By examining the difference between life expectancy and healthy life expectancy, the number of years lived in poor health can be estimated. Havant (15.8 years) ranked higher than the Hampshire average (13.7 years).

## **Future growth**

Over the next five years there is a forecast growth of 2,830 people in Havant, a proportional increase of 2.2%. The largest proportional and absolute increase forecast was in the 65-74 age group. This segment of the population is predicted to increase by 1,840 people, representing an increase of 12%, see figure 19. There is a growth of 2,030 dwellings (3.5% change) predicted between 2025 and 2030. The biggest growth in population is predicted to be in the west of Hayling Island. The biggest growth in the

number of dwellings is expected to be just to the east of Havant town between Havant town and Emsworth.

Figure 18 - Population Age and Sex Structure 2025: Havant compared to Hampshire

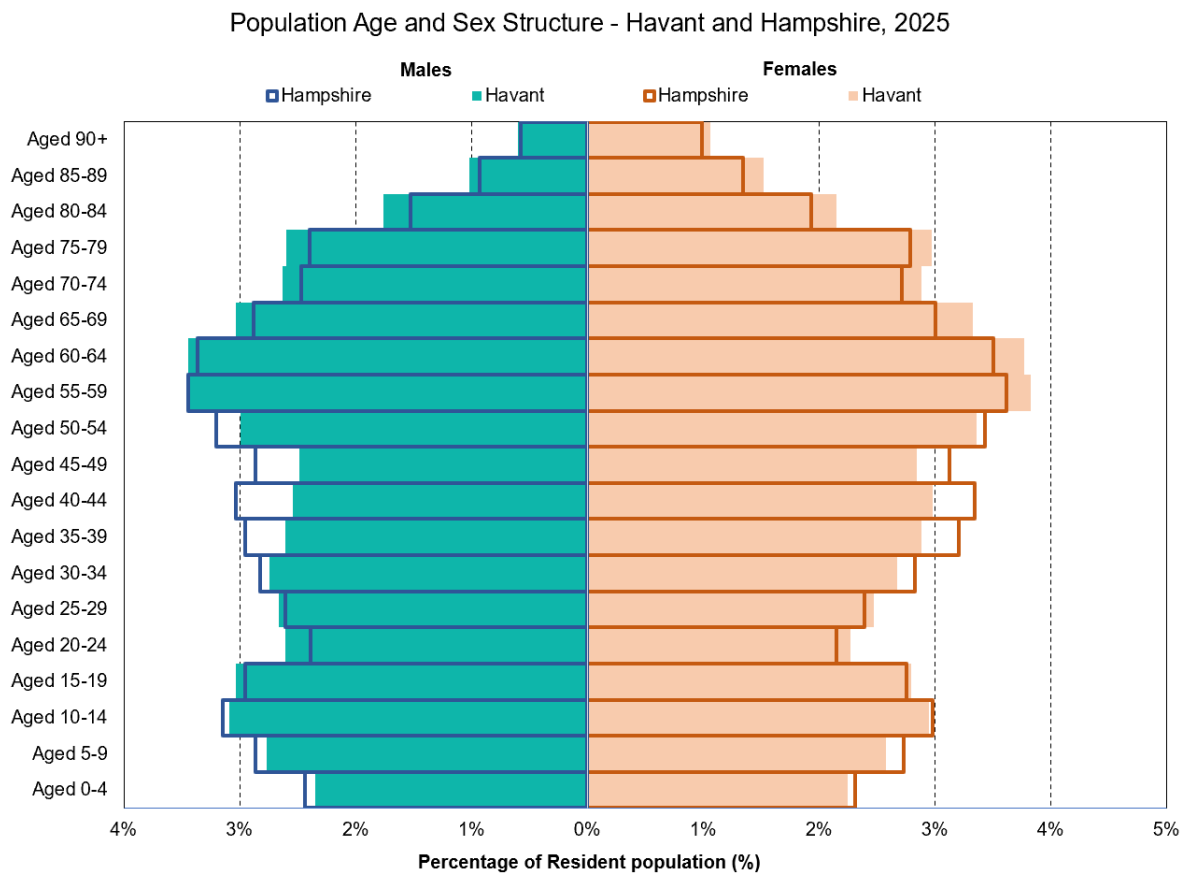
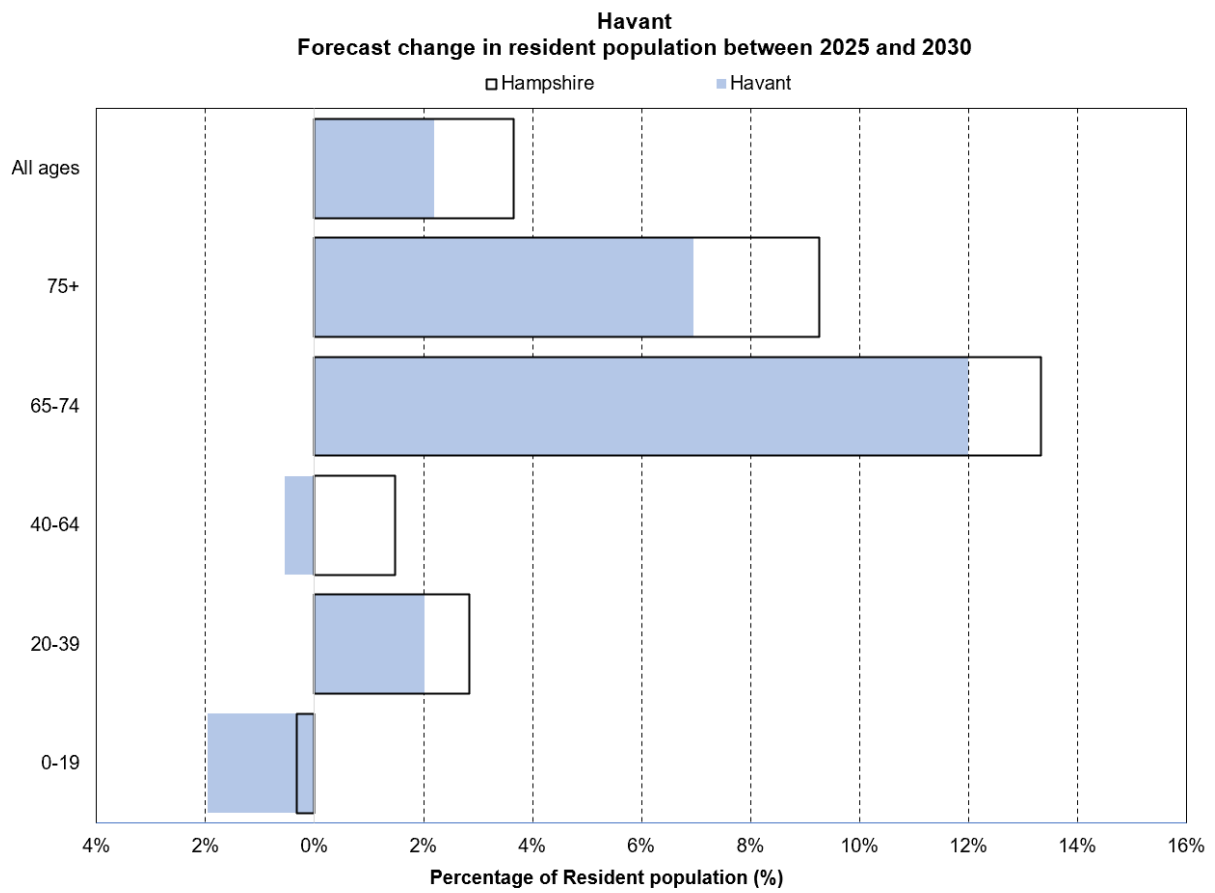
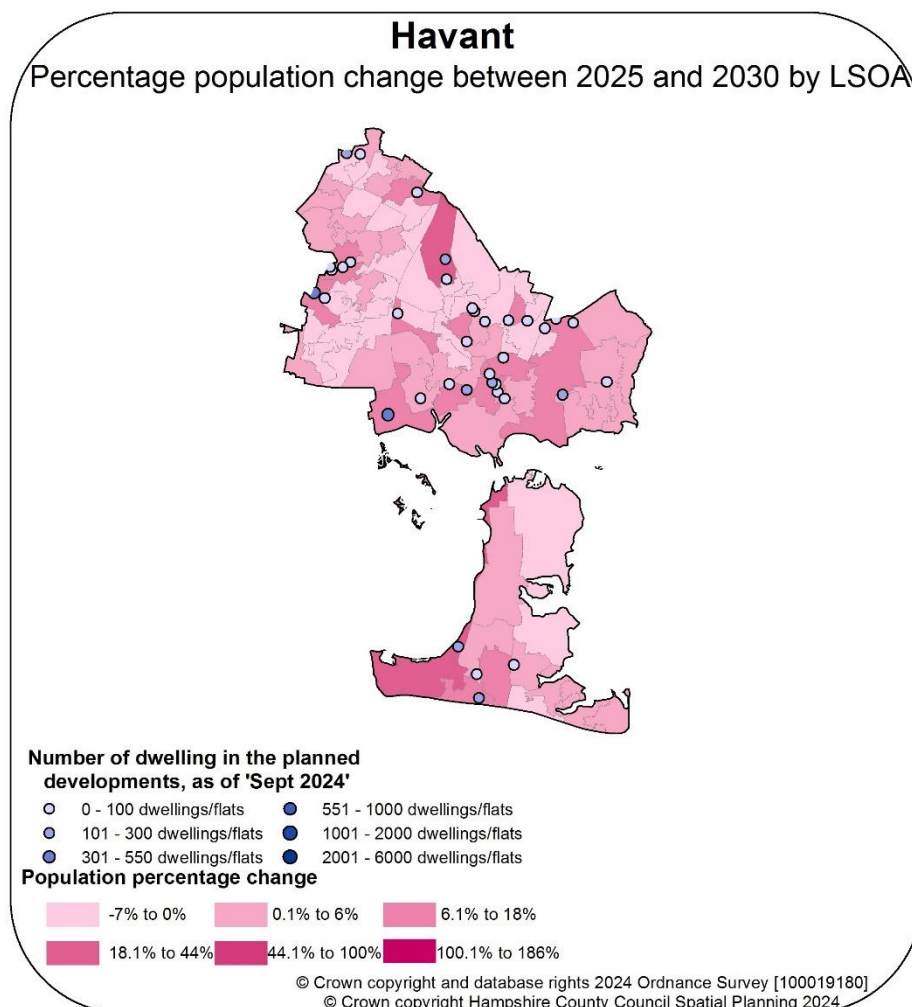


Figure 19 – Forecast change in resident population between 2025 and 2030: Havant & Hampshire



Source - Hampshire County Council Small Area Population Forecasts, 2023-based



## Pharmacy Provision

As at September 2024, the district of Havant is served by 24 pharmacies of which five are 100-hour pharmacies. These are well distributed throughout the area, see map 14. Five pharmacies open before 9:00 in the morning across the district. Late evening provision is available with six pharmacies open after 18:30 on a weekday, with one pharmacy open until 20:00 and four until 21:00. One pharmacy in Cowplain stays open later on a Wednesday. This pharmacy is open for the entire evening, only closing at 2am the following day (Thursday). There is also one distance selling premise in the district.

21 of Havant's pharmacies open on a Saturday with four open into the late evening until 21:00. Coverage on Sunday is provided by four pharmacies open during the day. Further pharmacies are accessible in the city of Portsmouth and across the border in Westbourne and Southbourne in Chichester district. The pharmacy provision in Havant serves one of the more deprived areas of the county where good access is essential.

100% of the population live within 2.5 miles road distance of a pharmacy within Havant with a small number of areas outside of the range, see map 14. These are non-residential areas including Staunton Country Park to the north of Leigh Park in Havant and two golf courses on Hayling Island. Out of hours GP provision is based in Portsmouth with good out of hours pharmacy coverage provided nearby.

The area of Havant district predicted to experience the most population growth is on the south west of Hayling Island and Warren Park. The new housing development in the north of Warren Park has good provision, with three pharmacies in Leigh Park within 2.5 miles. There are three pharmacies in South Hayling which serve the area of predicted population growth in the south west of Hayling Island.

There is good provision of pharmacy cover in Havant matching current need and future planned population growth. There are no identified needs for improvement and better access.

Map 14 – Havant pharmacies and area within 5 miles travel distance

Hampshire Pharmaceutical Needs Assessment 2025-28  
 Travel distances from pharmacies - Havant

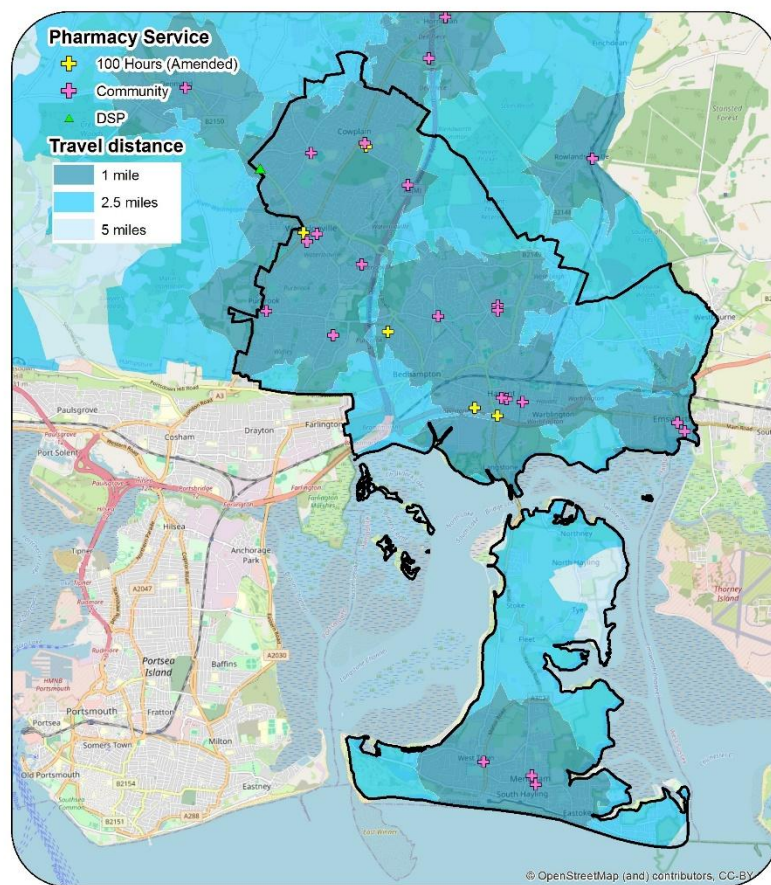
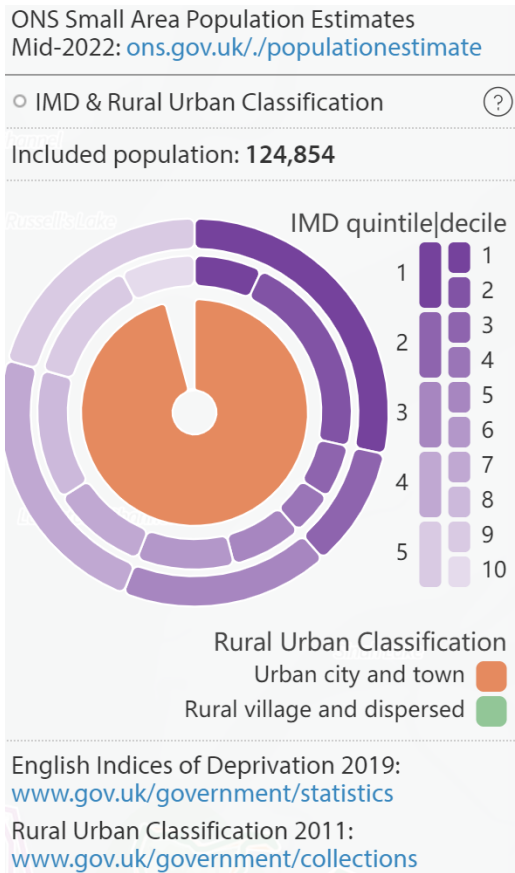


Figure 20 - Charts illustrating the characteristics of the included and excluded population of Havant within 8 km / 5 miles distance of a pharmacy by car



## **New Forest**

In 2025, New Forest is estimated to have a population of around 179,700, of which 31% are aged 65 years and over. This is the largest population in Hampshire and older than the Hampshire average, where approximately 23.5% of the population is aged over 65. The New Forest has lower proportions of younger age groups, aged between 0 and 54 years, see figure 21. Data from the 2021 Census reports 93.2% of New Forest's resident population are of ethnic group 'White British' and 6.8% report their ethnicity as being from ethnic minority groups. This is a lower proportion than Hampshire overall (12.1%). New Forest is the least ethnically diverse district in Hampshire and saw the smallest increase of those who are from an ethnic minority from the 2011 census to the 2021 census, with an increase of 32% which equates to 2,900 people.

The population density is 233.7 people per square kilometre, which is lower than the overall population density of Hampshire (380.8). The New Forest is a mainly rural district with urban areas in Totton and Hythe to the east, Lymington and New Milton on the coast and Ringwood in the west. These urban areas hold 72% of the district population. A further 17% of the population live in rural town and fringe areas, whilst the remaining 11% are in rural villages.

Deprivation is lower than the national average for England. However, there are areas in Totton, near to Hythe, in Lymington and New Milton which have higher levels of deprivation than the rest of the New Forest. As of 2023, 12.4% of children were living in income deprived households and 4.6% of people aged 60+ claimed pension credit in February 2024. Both measures were significantly lower than the national averages of 19.7% and 7.6% respectively.

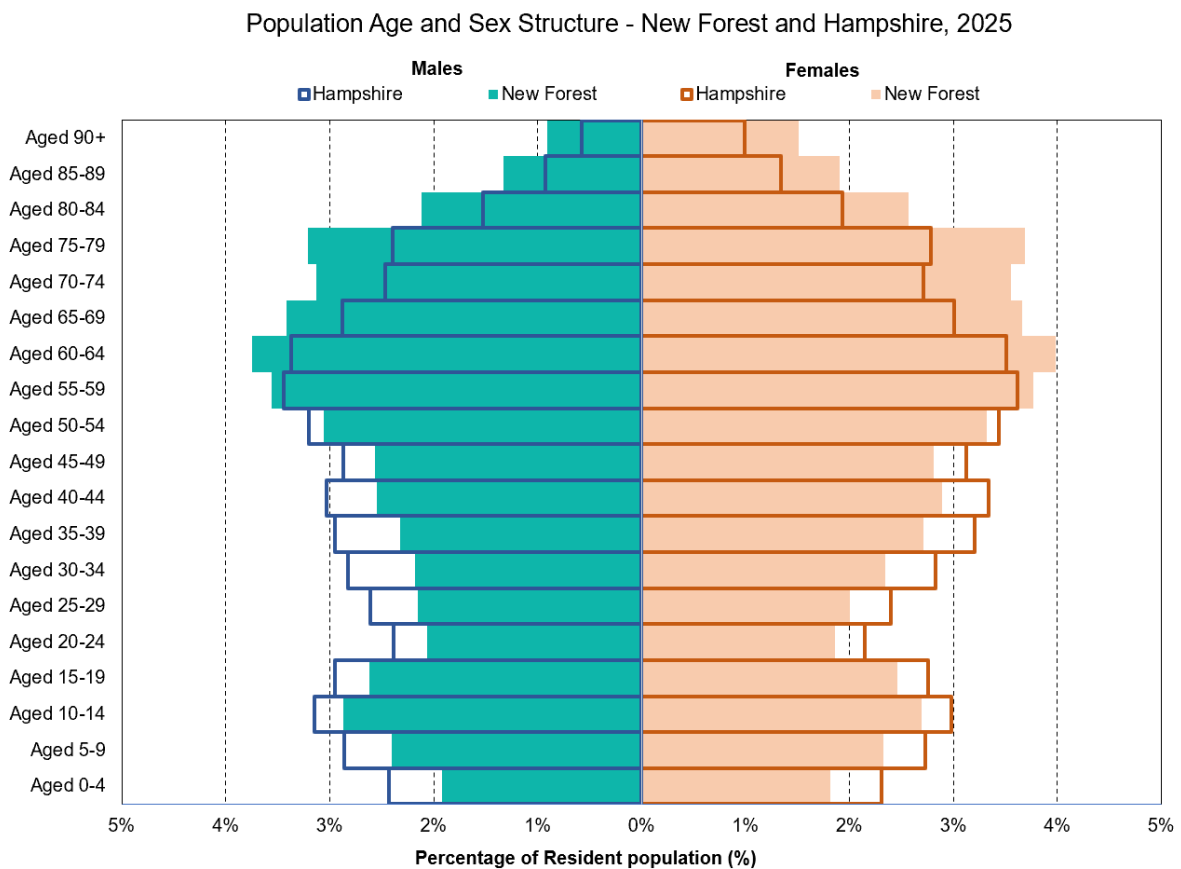
The health of people in New Forest is generally similar to the England average. 18.5% of the population described themselves as disabled under the Equality Act compared to 17.3% nationally. 4.8% of the district's population described their health as 'bad or very bad' compared to 5.2% describing their health in this way nationally.

Figures for 2020-2022, show that life expectancy for men (81.9 years) and women (85.1 years) resident in New Forest is higher than the England average. There are inequalities across the district with a difference of 5.0 years between male life expectancy in the most and least deprived deciles of the district and a corresponding difference of 2.8 years for females. Looking at healthy life expectancy for all persons in 2018-2022, New Forest (69.8 years) ranked higher than the Hampshire average (69.3 years). By examining the difference between life expectancy and healthy life expectancy, the number of years lived in poor health can be estimated. New Forest (14.0 years) ranked higher than the Hampshire average (13.7 years).

## Future growth

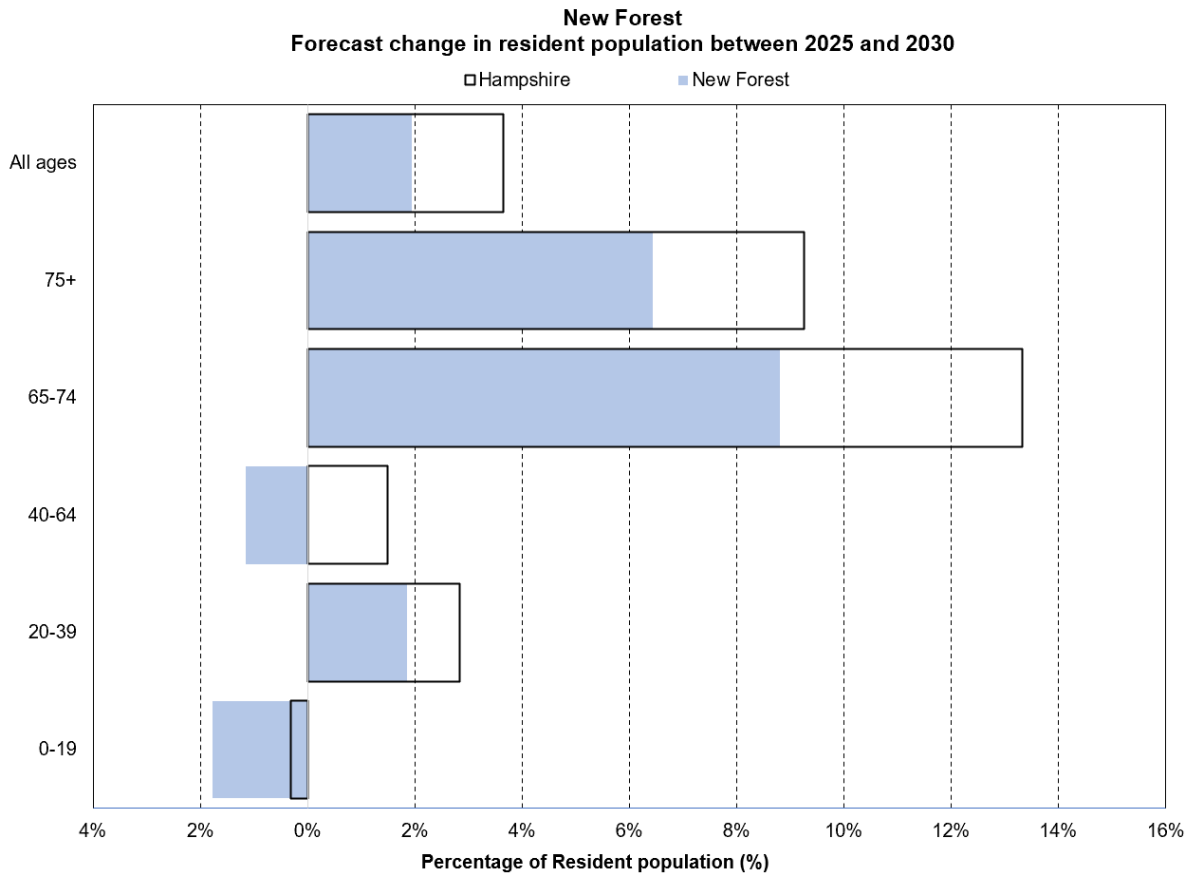
Over the next five years there is a forecast growth of 3,480 people in New Forest, a proportional increase of 1.9%, which is the third smallest increase across Hampshire. The largest proportional and absolute increase in population forecast was in the 65-74 age group. This segment of the population is predicted to increase by 2,180 people, representing an increase of 9%, see figure 22. There is a growth of 3,020 dwellings (3.6% change) predicted between 2025 and 2030. The biggest growth in population and dwelling numbers is predicted to be to the west of Totton, around Netley Marsh.

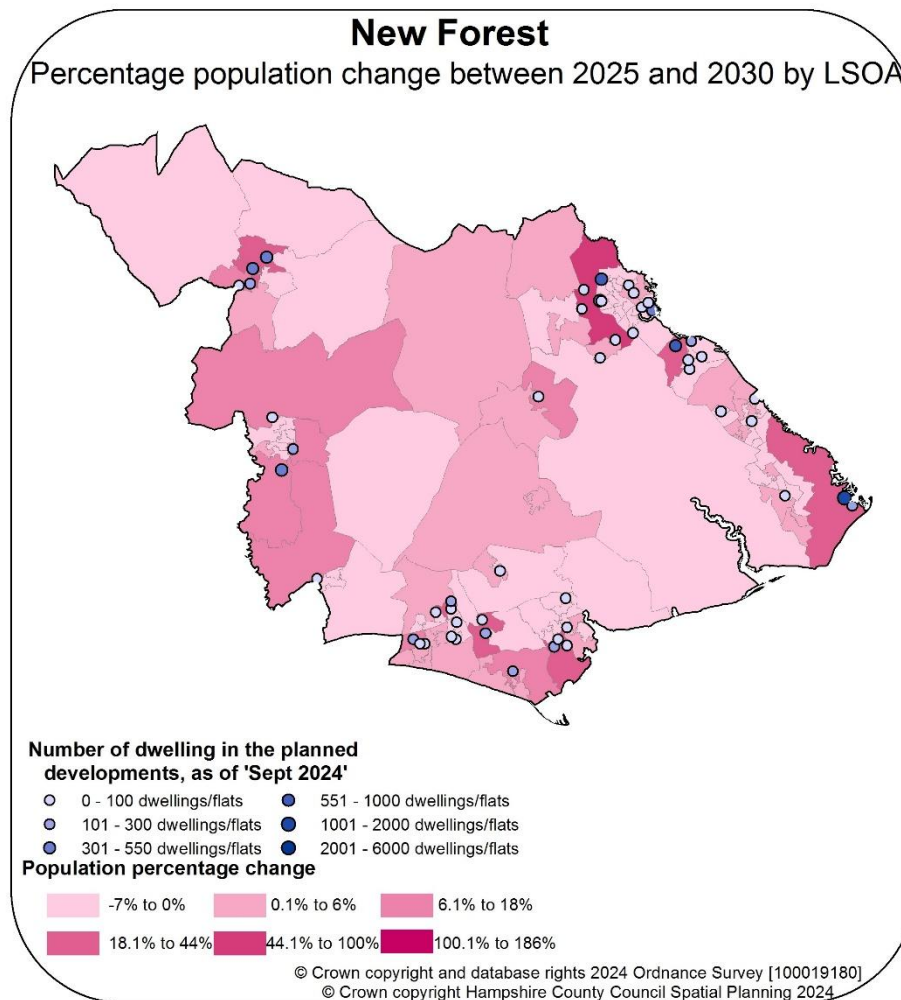
Figure 21 - Population Age and Sex Structure 2025: New Forest compared to Hampshire



Source - Hampshire County Council Small Area Population Forecasts, 2023-based

Figure 22 – Forecast change in resident population between 2025 and 2030: New Forest & Hampshire





## Pharmacy Provision

As at September 2024, the New Forest district has 33 community pharmacies including three 100-hour pharmacies. There are also two distance selling pharmacies. There are two dispensing locations in the district, located in Fordingbridge and Burley.

Six pharmacies provide late evening provision with three pharmacies remaining open after 20:00. Two are situated in New Milton and one in Milford. There is also additional provision across the district border in Southampton, Test Valley, Wiltshire, Dorset, and Bournemouth, Christchurch & Poole.

27 pharmacies are open on a Saturday with evening provision up to 21:00. Five pharmacies are open on Sunday with one staying open in the early evening up to 19:00. This provision is available in the main towns of the New Forest with the far west accessing provision across the border in Dorset and Wiltshire, and the east from Southampton.

There is an Urgent Treatment Centre located at Lymington Hospital. There is pharmacy provision in this area for out of hours prescription dispensing.

98% of the area's resident population is within 5 miles road travel of a pharmacy in New Forest with very sparsely populated, rural areas being further away from a pharmacy, see map 16 and figure 23. The 2% excluded population are from the rural villages of East Boldre (5.2 miles from a pharmacy) and Martin in the north west of the district. There is no provision within 5 miles in travel distance from across the borders which covers the village of Martin. There are around 400 people living within this area with no provision from within the New Forest or from across the district's borders. This is equivalent to 0.2% of the New Forest population.

Areas of largest population growth over the next five years are around the north east of Totton and north of Calshot in the east of the district. Totton has a total of four pharmacies, two in the centre of town. One of these is open seven days a week, open until 19:00 weekdays, 17:30 on Saturdays and 16:00 on Sundays. Totton residents can also access cross boundary provision in the city of Southampton. The nearest pharmacy to Calshot is in Blackfield, which is open 08:30 to 18:00 on weekdays and 09:00 to 17:00 on Saturdays.

There is good provision of pharmacy cover in the New Forest matching current need and future planned population growth. The age of this population will need to be taken into consideration when considering pharmacy applications and border pharmacies will need to be taken into account when considering pharmaceutical needs. There are no identified needs for improvement and better access.

Map 16 – New Forest pharmacies and area within 5 miles travel distance

### Hampshire Pharmaceutical Needs Assessment 2025-28 Travel distances from pharmacies - New Forest

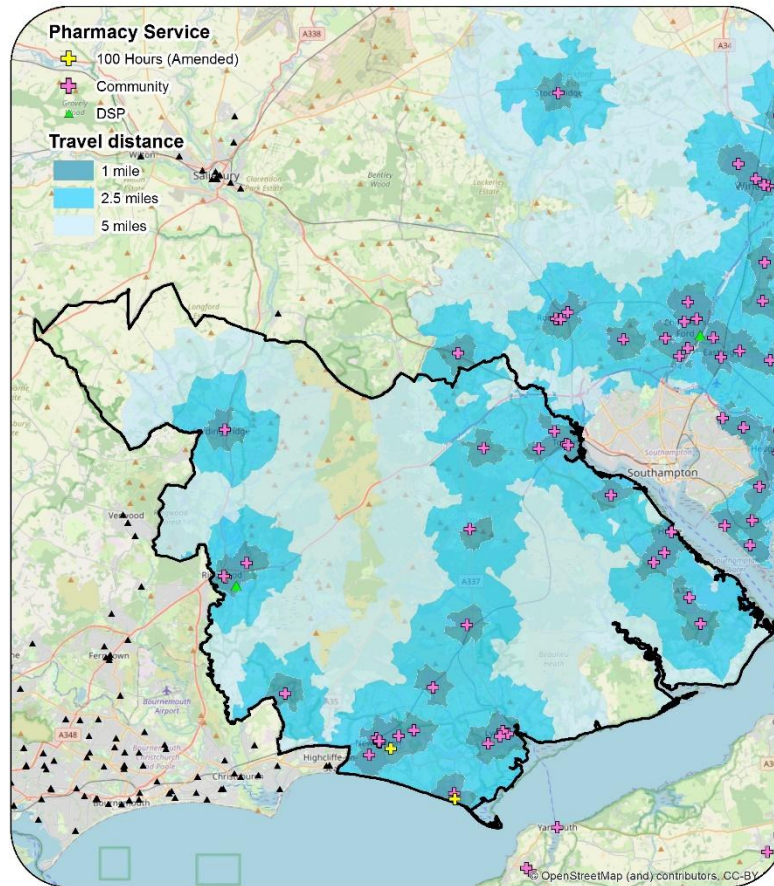
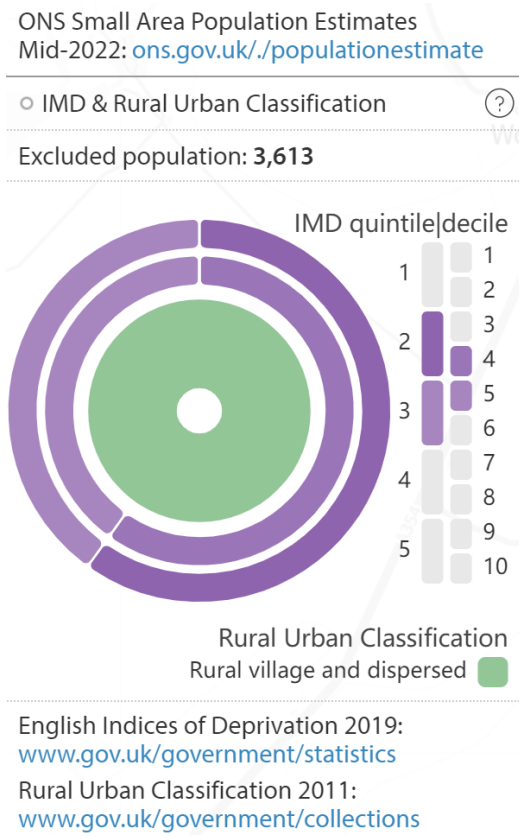
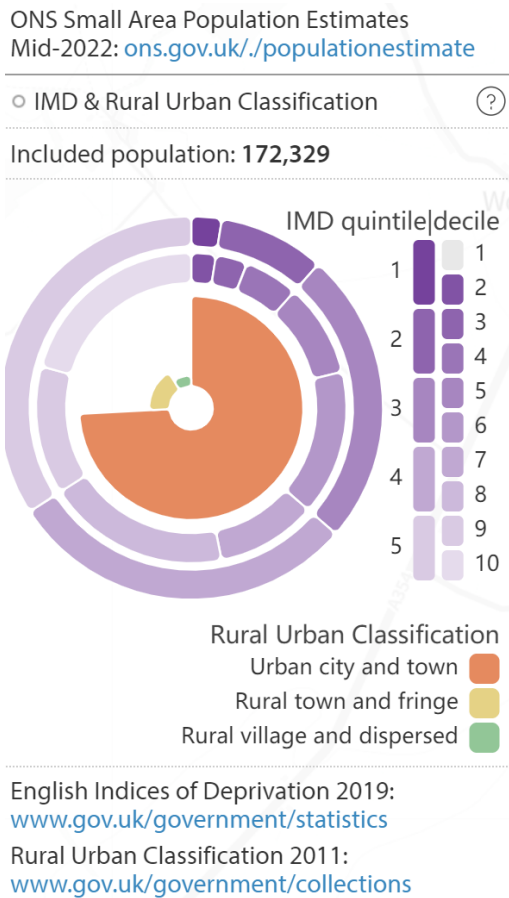


Figure 23 - Charts illustrating the characteristics of the included and excluded population of New Forest within 8 km / 5 miles distance of a pharmacy by car



## Rushmoor

In 2025, Rushmoor is estimated to have a population of around 102,700, of which 17.5% are aged 65 years and over. The population includes a large Army base in Aldershot. The district's population is younger than the Hampshire average, where approximately 23.5% of the population is aged over 65. Rushmoor has a younger age structure compared to Hampshire with a larger proportion of residents aged between 20 to 45 years old, see figure 24. Data from the 2021 Census reports 71.1% of Rushmoor's resident population are of ethnic group 'White British' and 28.9% report their ethnicity as being from ethnic minority groups. This is a higher proportion than Hampshire overall (12.1%). Rushmoor is the most ethnically diverse district in Hampshire, with around 9,000 people living in Rushmoor district identified themselves as Nepalese in the 2021 census.

The population density is 2554.9 people per square kilometre, which is higher than the overall population density of Hampshire (380.8). Rushmoor is an urban area with the entire population living in areas classified as urban city or town.

Deprivation is lower than the national average for England but higher than deprivation in the South East region and Hampshire. The areas of greater deprivation are around Aldershot Park, Aldershot town centre and Cherrywood in Farnborough. As of 2023, 11.3% of children were living in income deprived households and 10.6% of people aged 60+ claimed pension credit in February 2024. The percentage of children living in income deprived households was significantly lower than the national average of 19.7% but the percentage of people aged 60+ who claimed pension credit was significantly higher than the national average of 7.6%.

The health of people in Rushmoor is generally better than the England average. 14.3% of the population described themselves as disabled under the Equality Act compared to 17.3% nationally. 3.8% of the district's population described their health as 'bad or very bad' compared to 5.2% describing their health in this way nationally. This may be associated with the relatively younger age of the district's population.

Figures for 2020-2022, show that life expectancy for men (79.1 years) and women (83.2 years) resident in Rushmoor is similar to the England average. There are inequalities across the district with a difference of 9.8 years between male life expectancy in the most and least deprived deciles of the district and a corresponding difference of 7.4 years for females. Looking at healthy life expectancy for all persons in 2018-2022, Rushmoor (66.7 years) ranked lower than the Hampshire average (69.3 years). By examining the difference between life expectancy and healthy life expectancy, the number of years lived in poor health can be estimated. Rushmoor (14.8 years) ranked higher than the Hampshire average (13.7 years).

## Future growth

Over the next five years there is a forecast growth of 5,120 people in Rushmoor and a proportional increase of 5%. The largest proportional and absolute increase forecast was in the 65-74 age group. This segment of the population is predicted to grow by 1,700 people, representing an increase of 19%, see figure 25. There is a growth of 3,000 dwellings (7% change) predicted between 2025 and 2030, which is the second largest proportional increase across Hampshire. The biggest growth in population and in dwelling numbers is predicted to be to the north of Aldershot train station, in Aldershot Camp.

Figure 24 - Population Age and Sex Structure 2025: Rushmoor compared to Hampshire

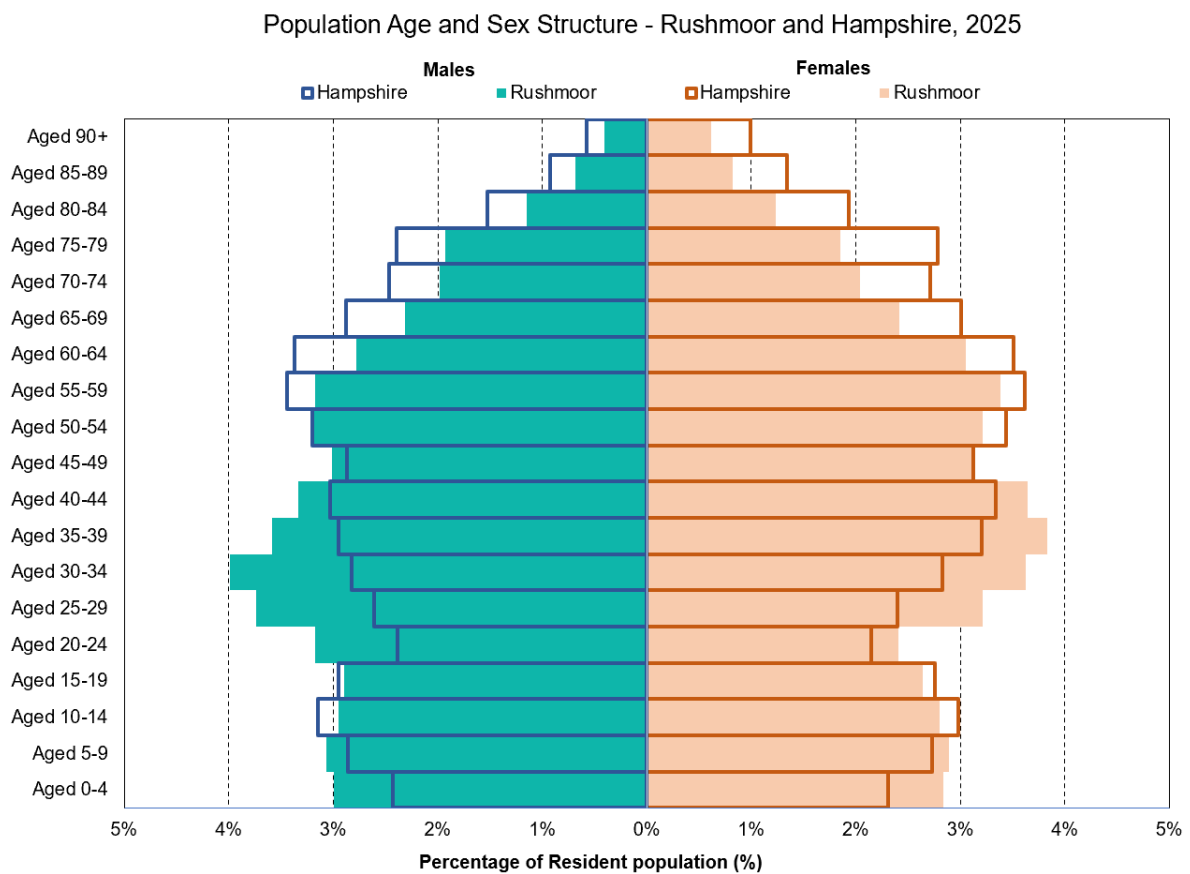
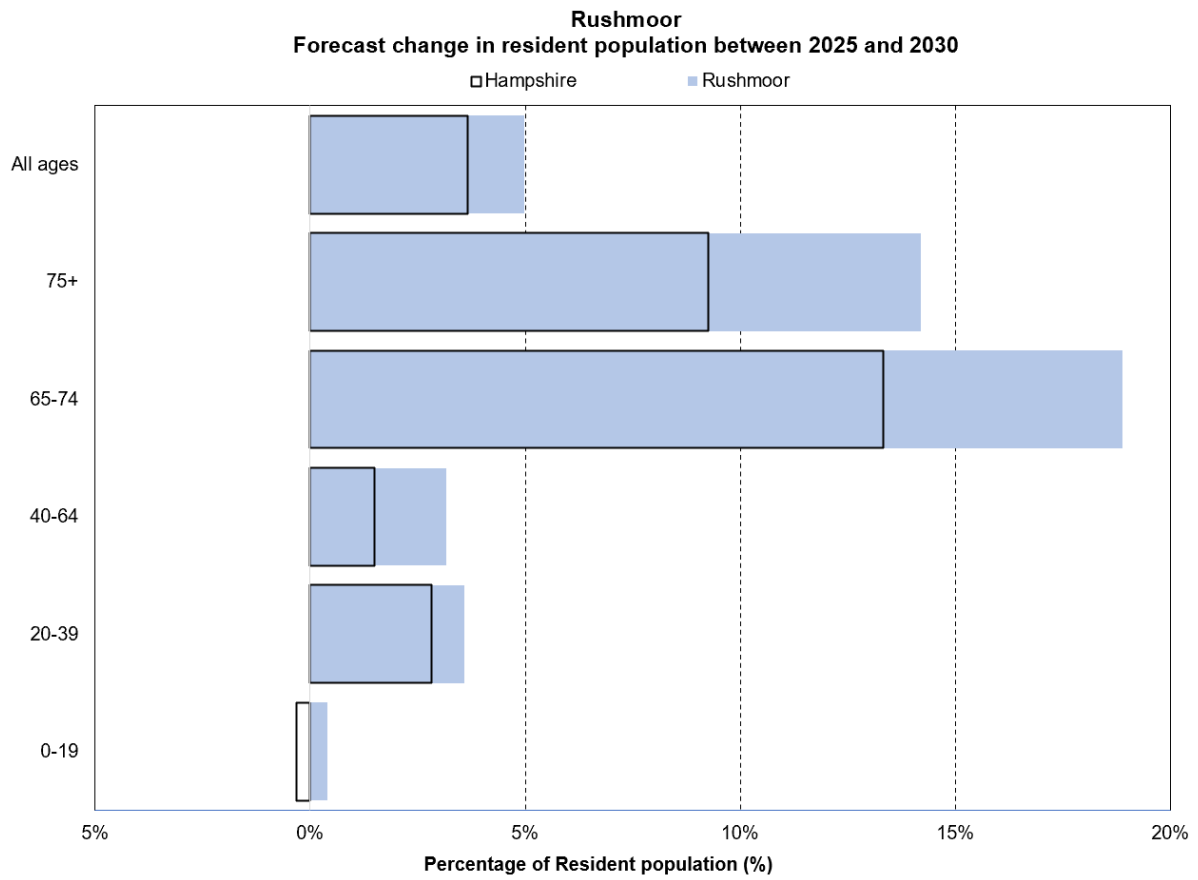
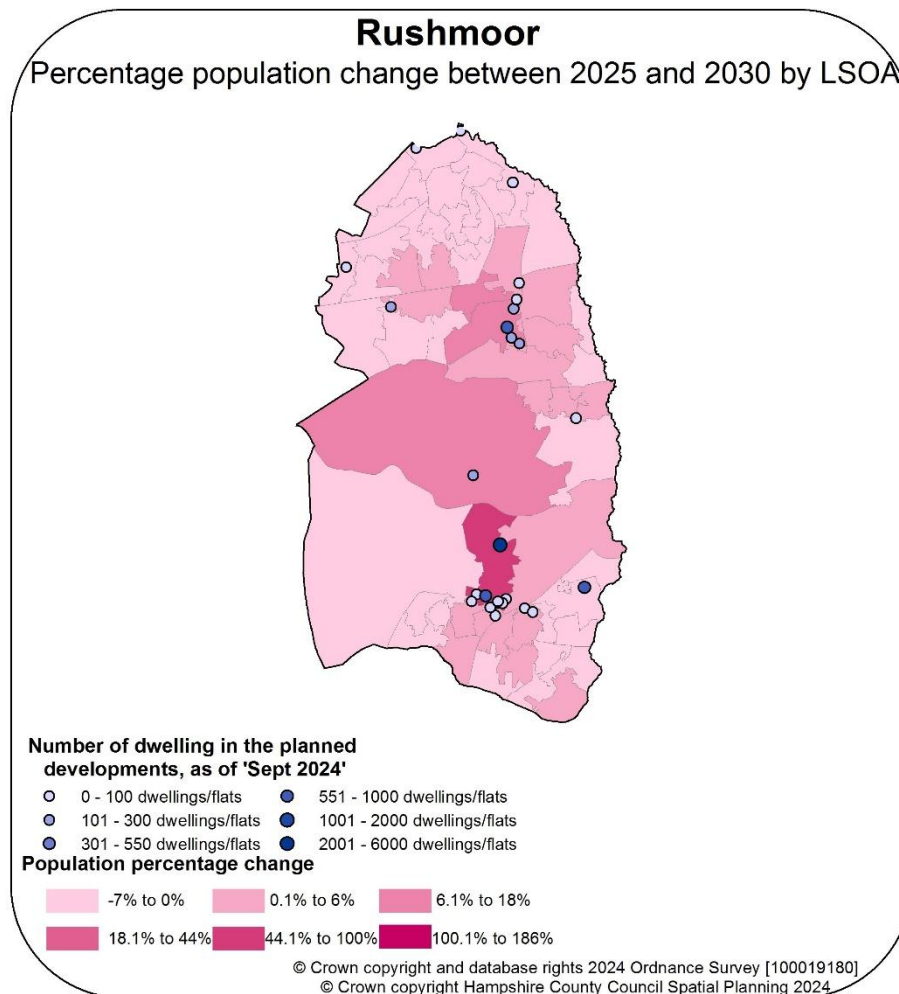


Figure 25 – Forecast change in resident population between 2025 and 2030: Rushmoor & Hampshire



Source - Hampshire County Council Small Area Population Forecasts, 2023-based



## Pharmacy Provision

As at September 2024, Rushmoor had 17 community pharmacies including one 100-hour pharmacy. There are also two distance selling premises.

There is good early evening provision throughout the locality, with five pharmacies remaining open after 18:30 on weekdays and two pharmacies remaining open until late evening, closing at 21:00. Four pharmacies offer early morning provision opening before 09:00.

Weekend provision is provided by 14 pharmacies on a Saturday, with one opening until 21:00 in the evening. Five pharmacies are open on a Sunday. 100% of the resident population live within a 2.5 mile drive of a pharmacy within Rushmoor. The area not within a 2.5 mile distance is sparsely populated, consisting largely of a Site of Special Scientific Interest (SSSI) at Bourley and Long Valley, see map 18.

The area of largest growth over the next five years is forecast to be in the town centre of Aldershot, north of the train station. There are currently five pharmacies in the town centre of Aldershot, north of the train station. Between these five pharmacies, there is

late evening provision until 21:00 on a weekday and 19:00 on a Saturday. Four of these pharmacies are open on a Saturday, and two are open on Sundays.

There is good provision of pharmacy cover in Rushmoor matching current need and future planned population growth. There are no identified needs for improvement and better access.

Map 18 – Rushmoor pharmacies and area within 5 miles travel distance

## Hampshire Pharmaceutical Needs Assessment 2025-28

### Travel distances from pharmacies - Rushmoor

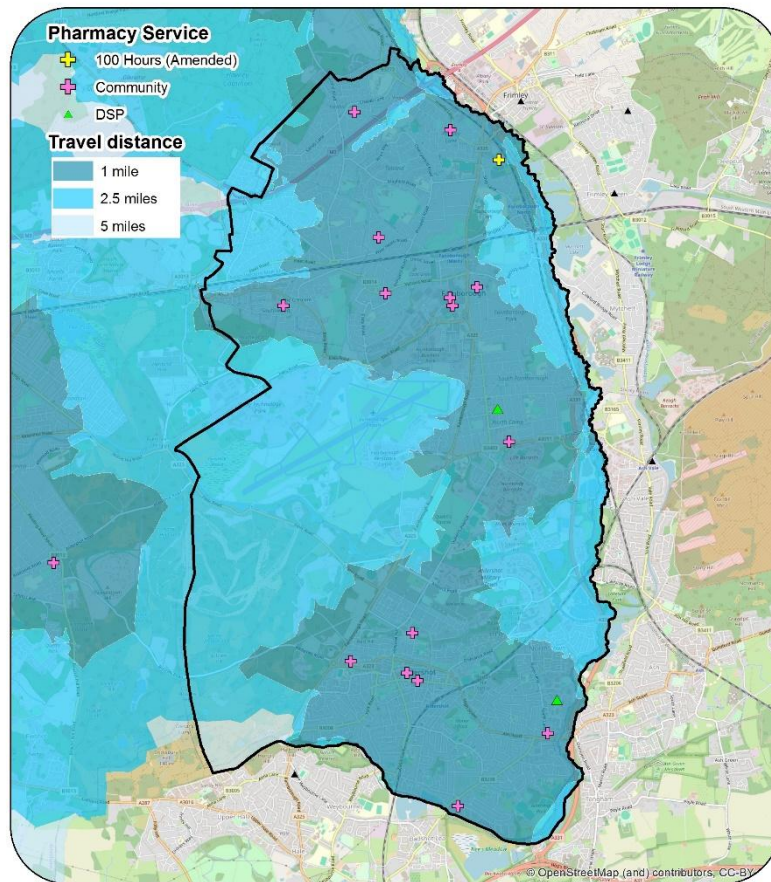
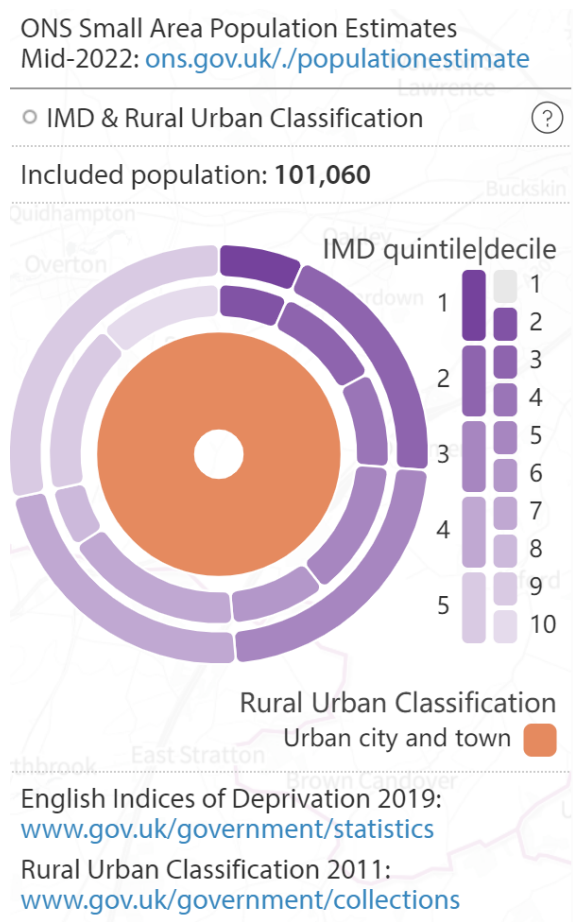


Figure 26 - Charts illustrating the characteristics of the included population of Rushmoor within 8 km / 5 miles distance of a pharmacy by car



## **Test Valley**

In 2025, Test Valley is estimated to have a population of around 137,400, of which 25.1% are aged 65 years and over. This is slightly older than the Hampshire average, where approximately 23.5% of the population is aged over 65. Test Valley has a smaller proportion of residents compared 15 to 49 years old compared to Hampshire, see figure 27. Data from the 2021 Census reports 88% of Test Valley's resident population are of ethnic group 'White British' and 12% report their ethnicity as being from ethnic minority groups. This is a similar proportion to that reported in Hampshire overall (12.1%).

The population density is 207.9 people per square kilometre, which is lower than the overall population density of Hampshire (380.8). There are two main urban areas in Test Valley – Andover in the north of the district and Romsey in the south. These areas hold 70% of the district population. A further 24% of the population live in rural villages, whilst the remaining 6% are in rural town and fringe areas.

Deprivation is lower than the national average for England, the South East region and Hampshire as whole. However, there is an area of high deprivation in the north of Andover, close to Anton Lakes including Kingsway Gardens and East Anton. As of 2023, 9.9% of children were living in income deprived households and 3.9% of people aged 60+ claimed pension credit in February 2024. Both measures were significantly lower than the national averages of 19.7% and 7.6% respectively.

The health of people in Test Valley is generally better than the England average. 15.6% of the population described themselves as disabled under the Equality Act compared to 17.3% nationally. 3.9% of the district's population described their health as 'bad or very bad' compared to 5.2% describing their health in this way nationally.

Figures for 2020-2022, show that life expectancy for men (81.3 years) and women (84.0 years) resident in Test Valley is higher than the England average. There are inequalities across the district with a difference of 6.5 years between male life expectancy in the most and least deprived deciles of the district and a corresponding difference of 8.0 years for females. Looking at healthy life expectancy for all persons in 2018-2022, Test Valley (69.8 years) ranked higher than the Hampshire average (69.3 years). By examining the difference between life expectancy and healthy life expectancy, the number of years lived in poor health can be estimated. Test Valley (13.1 years) ranked lower than the Hampshire average (13.7 years).

## **Future growth**

Over the next five years there is a forecast growth of 3,900 people in Test Valley, a proportional increase of 2.8%. The largest proportional and absolute increase forecast was in the 65-74 age group. This segment of the population is predicted to increase by 2,270 people, representing an increase of 14%, see figure 28. There is a growth of 1,980 dwellings (3.3% change) predicted between 2025 and 2030. The biggest growth

in population and dwelling numbers is predicted to be to the south of Romsey and to the north east of Andover, around Picket Piece and Picket Twenty.

Figure 27 - Population Age and Sex Structure 2025: Test Valley compared to Hampshire

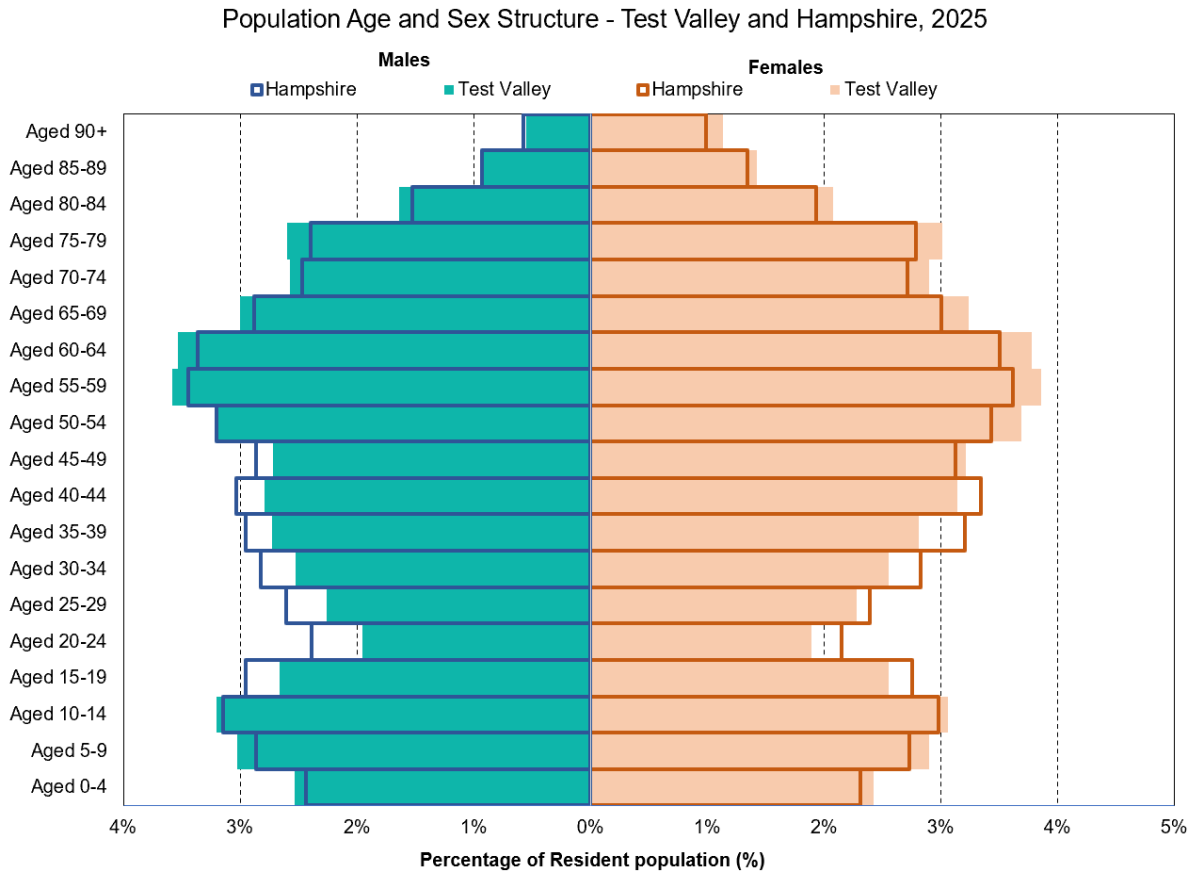
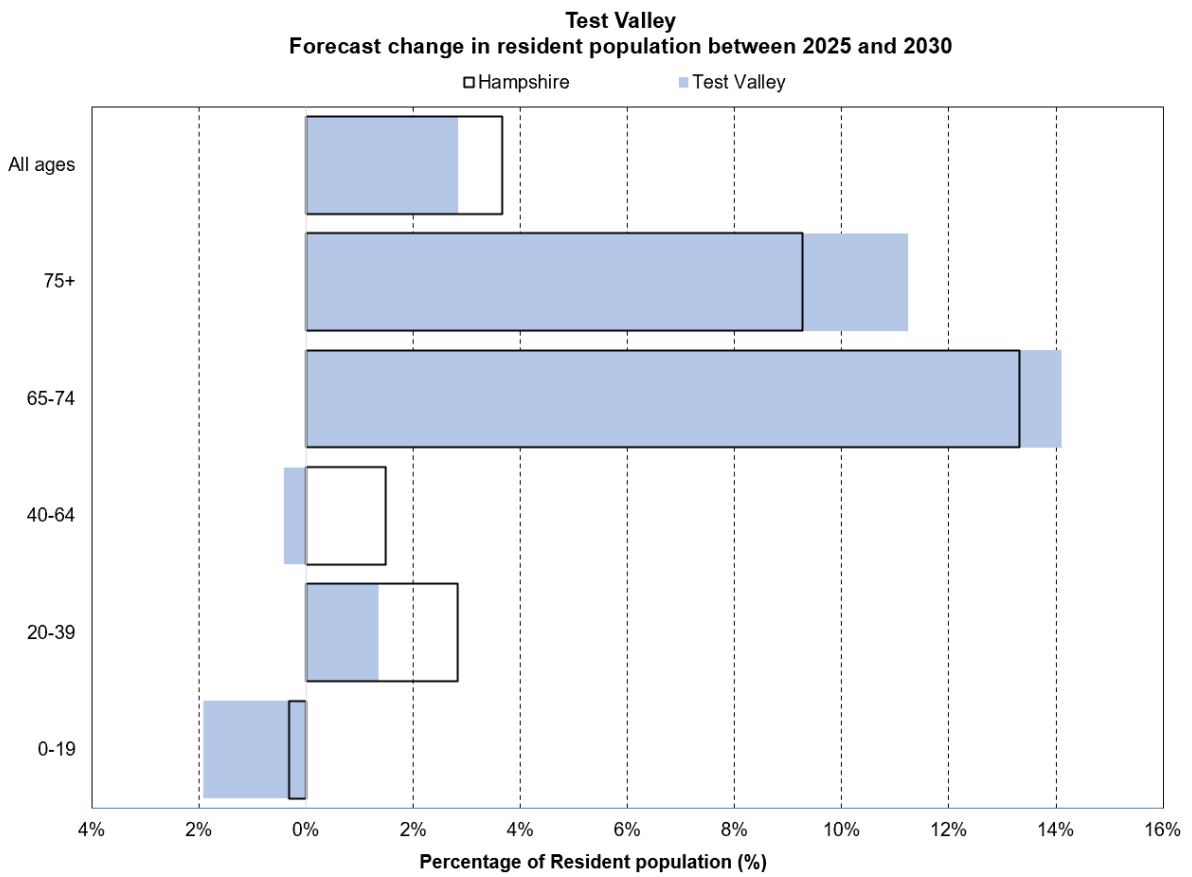
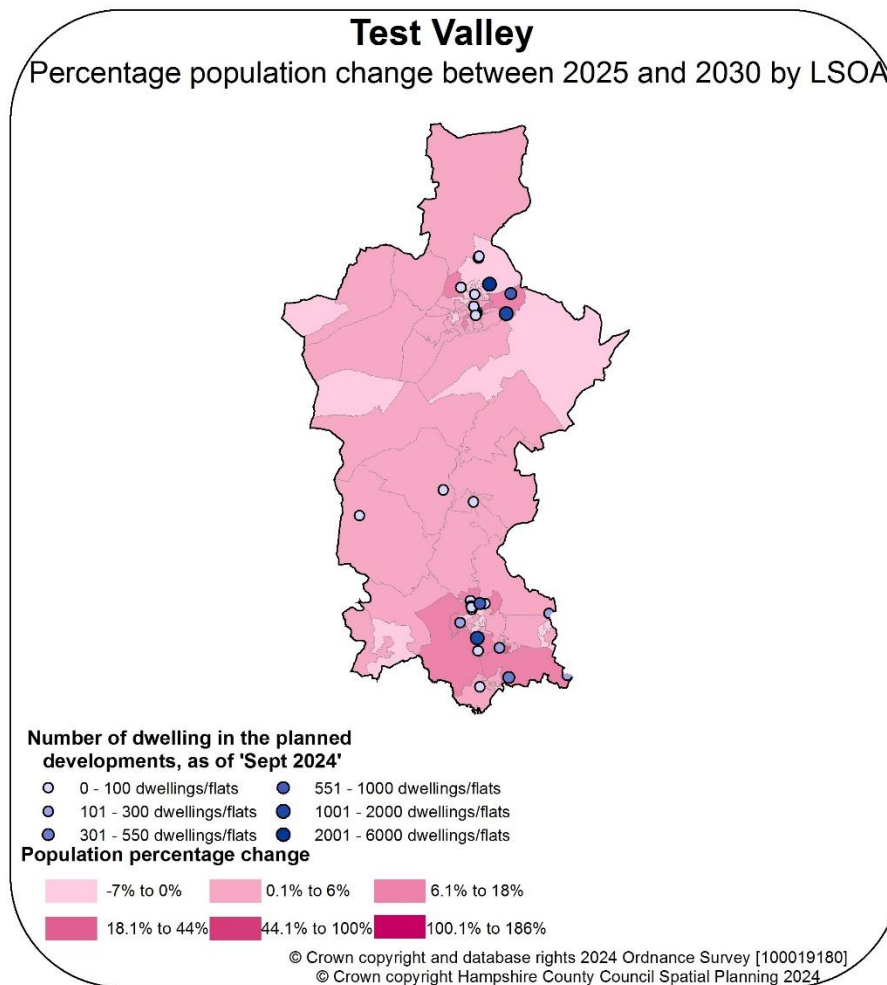


Figure 28 – Forecast change in resident population between 2025 and 2030: Test Valley & Hampshire



Source - Hampshire County Council Small Area Population Forecasts, 2023-based



## Pharmacy Provision

As of September 2024, 16 pharmacies cover Test Valley, distributed throughout the locality, including two 100-hour pharmacies. The larger urban areas of Andover and Romsey are well served, with eight and five pharmacies respectively.

There are four pharmacies providing late evening opening hours during the working week with four pharmacies open after 18:30. Residents in the south of the district can access further late evening provision across the border in Southampton.

13 pharmacies are open on a Saturday with late evening provision provided by a 100-hour pharmacy in Andover to the north of the area. Three pharmacies are open on a Sunday with two in Andover to the north and one in Romsey, to the south of the locality. Residents in the south of the district can access further weekend pharmacy provision across the border in Southampton and Totton, in New Forest district.

This area also has five dispensing GP practices due to the rural nature of the area, three are in the town of Romsey, with one in Andover and one in Stockbridge. 92% of the area's resident population live within 5 miles drive of a pharmacy within Test Valley,

however the rural nature of the area means that the areas further from premises are low in population density, see map 20 and figure 29. Some of these rural areas can access pharmacy provision across the border. For instance, the village of Barton Stacey to the east of the district is within a 5 mile drive of a pharmacy across the border in the village of Whitchurch in Basingstoke & Deane. The village of Shipton Bellinger to the west of Test Valley is within an 8 mile drive of a pharmacy across the border in Tidworth in Wiltshire.

There are several housing developments towards the south of the district around Romsey and to the northeast of Andover, in Picket Piece and Picket Twenty. Romsey is currently served by four pharmacies, including one opening on both Saturdays and Sundays. Both Picket Piece and Picket Twenty are within 2.5 miles of pharmacy provision in Andover, which has a total of eight pharmacies including two 100-hour pharmacies providing evening and weekend services.

There is good provision of pharmacy cover in Test Valley matching current need and future planned population growth. Border pharmacies need to be taken into account when considering pharmaceutical needs. There are no identified needs for improvement and better access.

### Hampshire Pharmaceutical Needs Assessment 2025-28 Travel distances from pharmacies - Test Valley

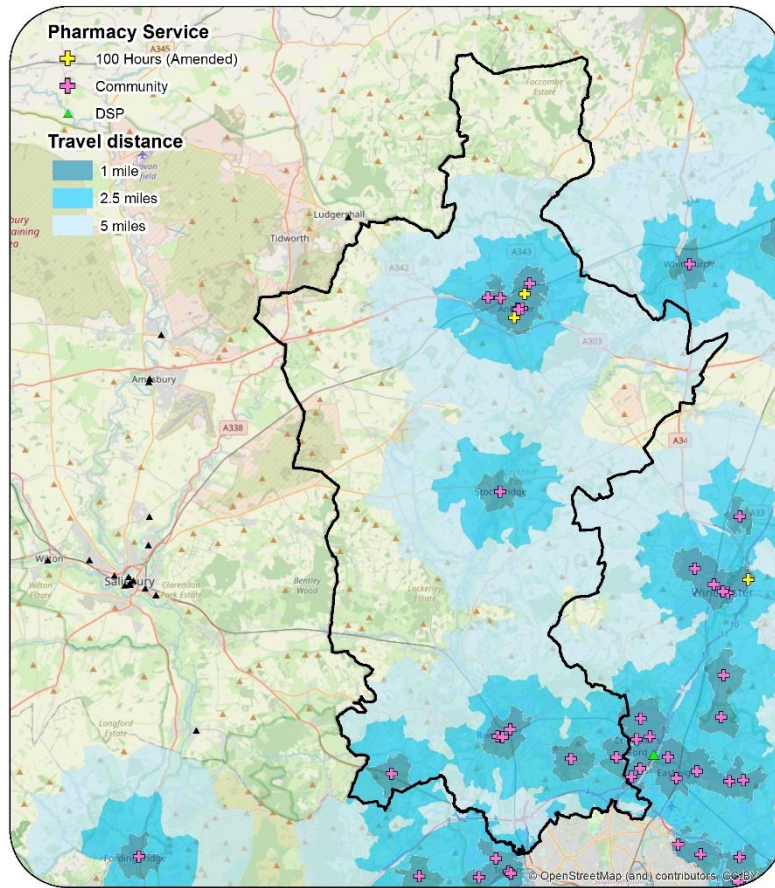
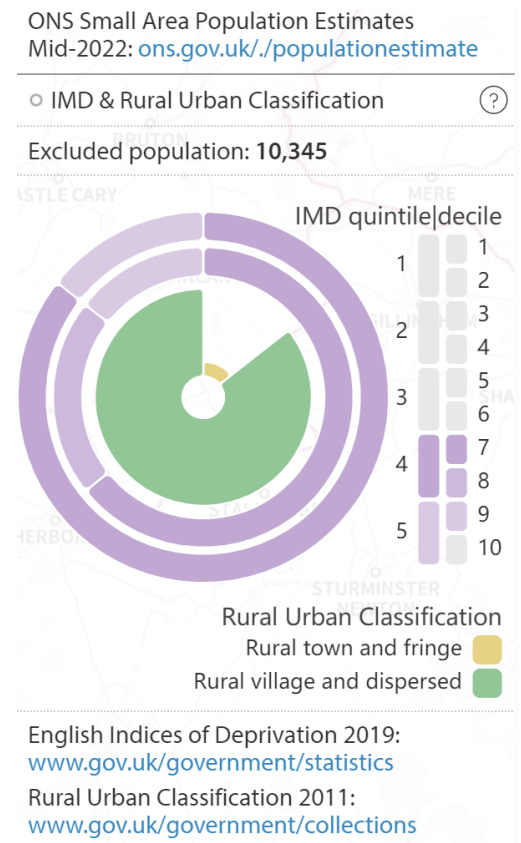
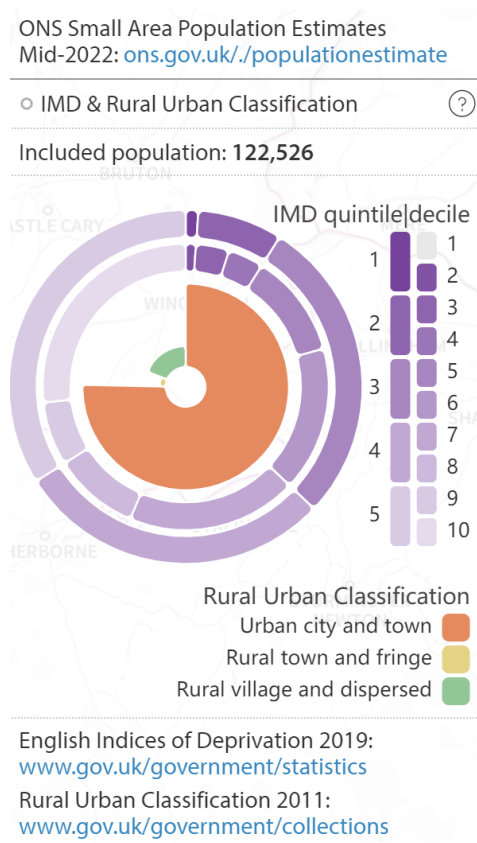


Figure 29 - Charts illustrating the characteristics of the included and excluded population of Test Valley within 8 km / 5 miles distance of a pharmacy by car



## **Winchester**

In 2025, Winchester is estimated to have a population of around 138,200, of which 22.2% aged 65 years and over. This is slightly younger than the Hampshire average, where approximately 23.5% of the population is aged over 65. It is a university city, this is reflected in the population age structure, with a higher proportion of people aged 15-19 and 20-24 years compared to Hampshire overall, see figure 30. Data from the 2021 Census reports 88.1% of Winchester's resident population are of ethnic group 'White British' and 11.9% report their ethnicity as being from ethnic minority groups. This is a similar proportion than Hampshire overall (12.1%).

The population density is 192.8 people per square kilometre, which is higher than the overall population density of Hampshire (380.8) and is the least densely populated district within Hampshire. Winchester city is the main urban area which holds 40% of the district population. A further 30% of the population live in rural towns and fringe areas, whilst the remaining 30% are in rural villages.

Deprivation is lower than the national average for England, the South East region and Hampshire as whole. Overall, Winchester district has a high level of affluence, although there are pockets of deprivation within Winchester city in Stanmore and Winnall. As of 2023, 8.0% of children were living in income deprived households and 4.3% of people aged 60+ claimed pension credit in February 2024. Both measures were significantly lower than the national averages of 19.7% and 7.6% respectively.

The health of people in Winchester is generally better than the England average. 15.4% of the population described themselves as disabled under the Equality Act compared to 17.3% nationally. 3.4% of the district's population described their health as 'bad or very bad' compared to 5.2% describing their health in this way nationally.

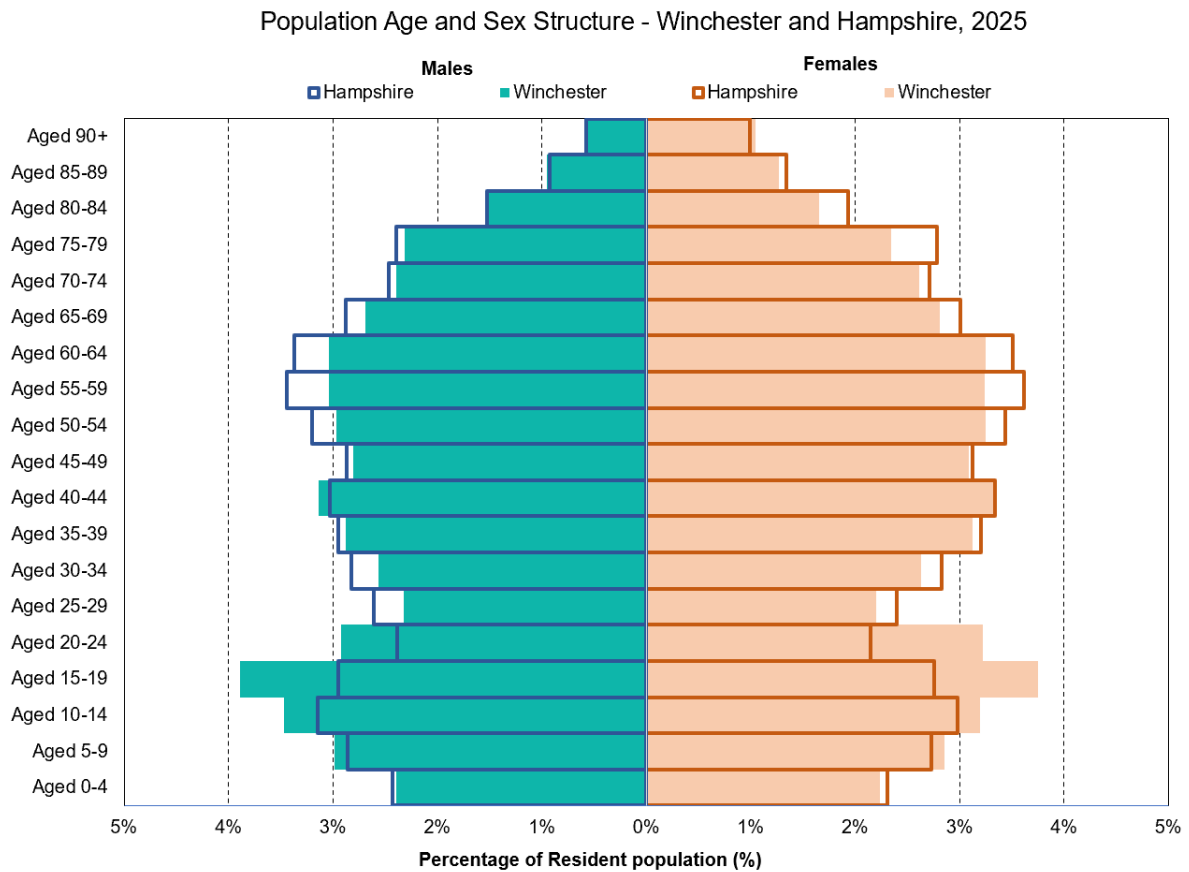
Figures for 2020-2022, show that life expectancy for men (82.2 years) and women (85.9 years) resident in Winchester is higher than the England average. There are inequalities across the district with a difference of 4.7 years between male life expectancy in the most and least deprived deciles of the district and a corresponding difference of 3.5 years for females. Looking at healthy life expectancy for all persons in 2018-2022, Winchester (71.6 years) ranked lower than the Hampshire average (69.3 years). By examining the difference between life expectancy and healthy life expectancy, the number of years lived in poor health can be estimated. Winchester (12.4 years) ranked lower than the Hampshire average (13.7 years).

## **Future growth**

Over the next five years there is a forecast growth of 7,320 people in Winchester, a proportional increase of 5.3%, the second largest proportional increase across Hampshire. The largest proportional increase forecast was in the 65-74 age group. This segment of the population is predicted to increase by 1,830 people, representing an increase of 13%, see figure 31. The largest absolute increase was in the 40-64 age

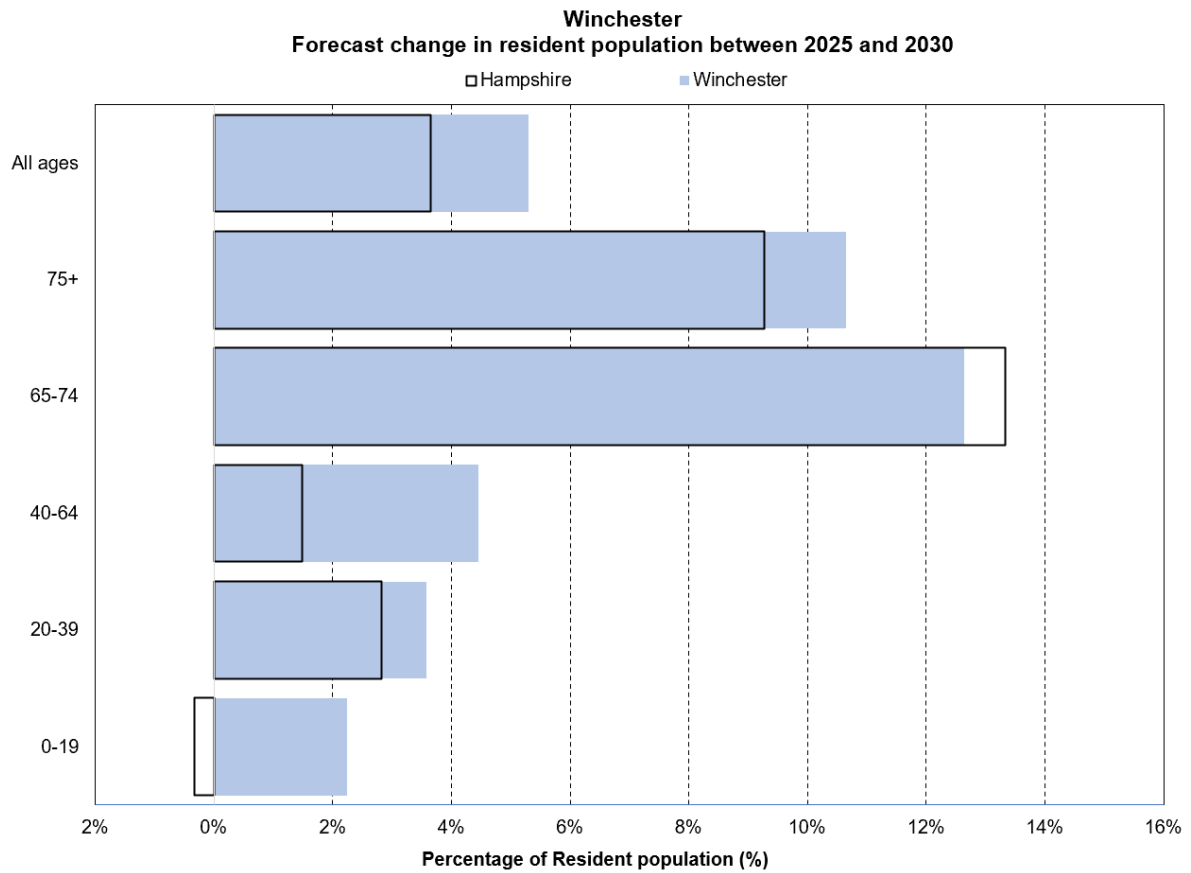
group with an increase of 1,920 people. There is a growth of 4,130 dwellings (7.1% change) predicted between 2025 and 2030, which is the largest proportional increase across Hampshire. The biggest growth in population and number of dwellings is predicted to be around Botley and Curbridge.

Figure 30 - Population Age and Sex Structure 2025: Winchester compared to Hampshire

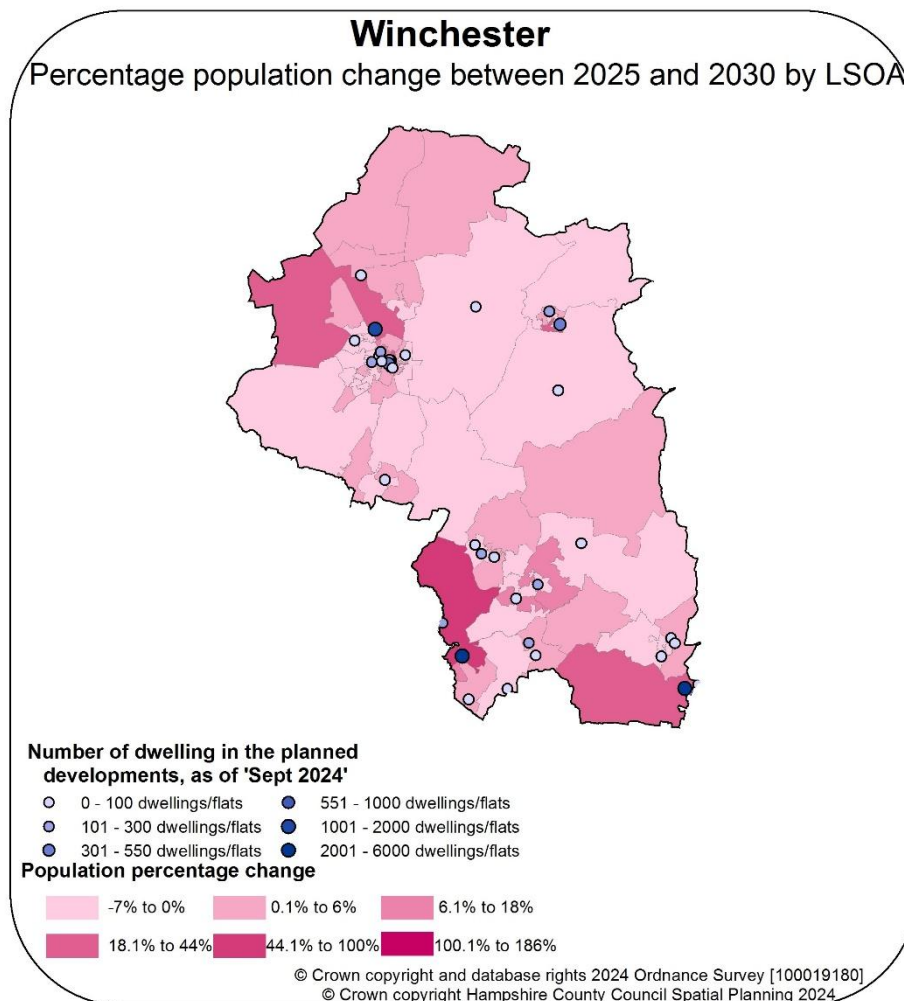


Source - Hampshire County Council Small Area Population Forecasts, 2023-based

Figure 31 – Forecast change in resident population between 2025 and 2030: Winchester & Hampshire



Source - Hampshire County Council Small Area Population Forecasts, 2023-based



## Pharmacy Provision

As at September 2024, Winchester has 14 pharmacies across the district with two 100-hour pharmacies in this locality and one dispensing appliance contractor. The 100-hour pharmacies are located to the north of the district in the city of Winchester and to the south in Whiteley on the Fareham border. Three pharmacies open before 09:00 on weekday mornings. Two pharmacies are open after 18:30 with both closing at 21:00. All pharmacies in the district are open on Saturday, with evening availability up to 21:00. Three pharmacies open on Sundays in Winchester district, two in the city of Winchester and one in Whiteley.

There are eight dispensing GP practices within the district of Winchester. One in Sutton Scotney, one in Twyford, one in Wickham, one in Alresford, one in Droxford, one in West Meon, one in Bishops Waltham and one in Denmead. The Sutton Scotney dispensing practice provides services for Micheldever and the surrounding areas which are outside of the five mile travel distance area.

94% of the area's resident population lives within 5 road miles of a pharmacy in Winchester with the rural population having further to travel, see map 22 and figure 32. The area is serviced by good pharmacy provision in neighbouring localities. This includes pharmacies in Havant, Fareham and Eastleigh in the South, and Basingstoke & Deane in the North. The population resident outside the 5 mile travel distance (6% of the district total) includes the villages of West Meon and Warnford in the west of the district. However, there is a dispensing GP practice within West Meon which provide pharmaceutical services to this area. Out of hours provision is based in Winchester hospital with a local 100-hour pharmacy nearby.

The housing development to the north of Winchester at Barton Farm can access six existing pharmacies, with five in Winchester city and one in Springvale. This includes a 100-hour pharmacy in Winnall. This pharmacy provides extensive opening hours, from 09:00 to 21:00 six days a week and from 10:00 to 16:00 on Sunday.

Housing developments just to the west of Waterlooville, which are located on the border of the Winchester district area, can access a number of pharmacies within a 2.5 mile travel distance, one in Denmead, one in Purbook, six within Waterlooville, and three in Cowplain. This includes two 100-hour pharmacies, with both providing evening provisions and one opening on weekends.

There is also a housing development near Burridge which has two pharmacies accessible within a 5 mile travel distance. This includes one 100-hour pharmacy which provides late evening and weekend provision.

There is good provision of pharmacy cover in Winchester matching current need and future planned population growth. There are no identified needs for improvement and better access.

Map 22 – Winchester pharmacies and area within 5 miles travel distance

## Hampshire Pharmaceutical Needs Assessment 2025-28

### Travel distances from pharmacies - Winchester

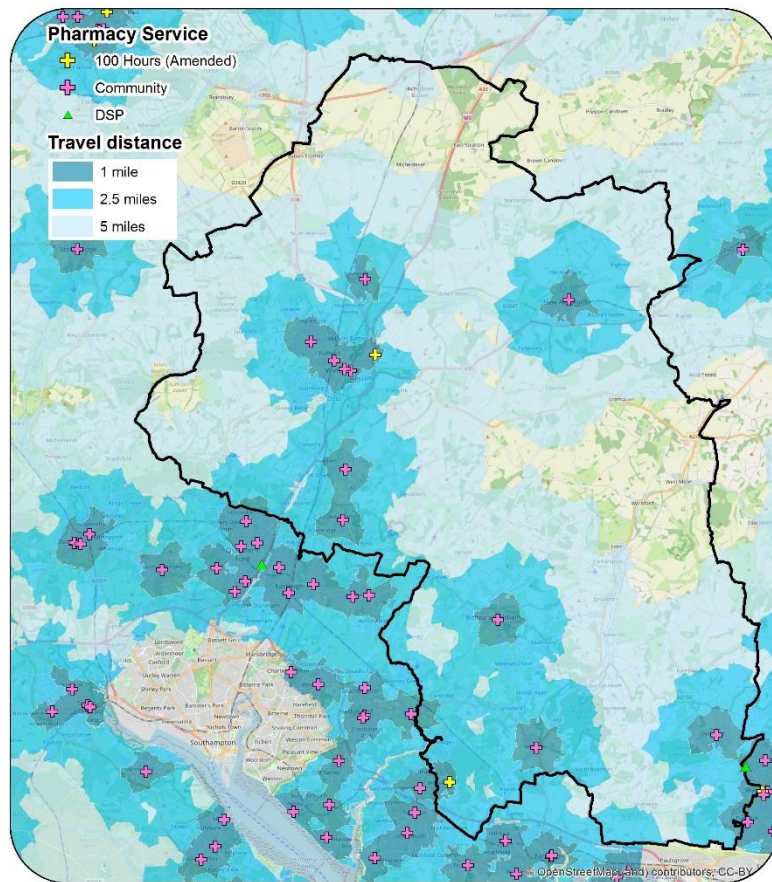


Figure 32: Charts illustrating the characteristics of the included and excluded population of Winchester within 8 km / 5 miles distance of a pharmacy by car

