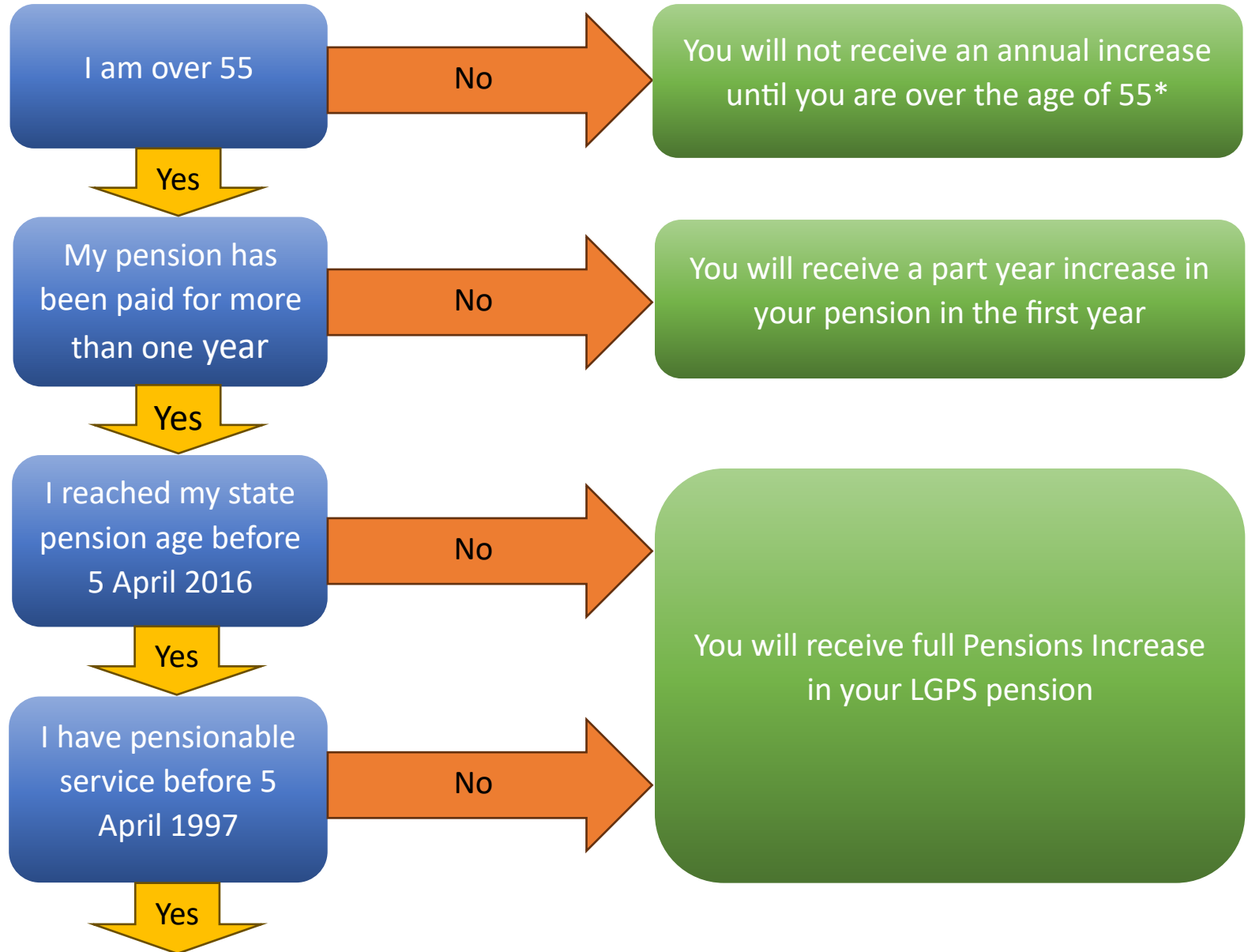


## Pensions Increase in Local Government pensions (LGPS)

This flowchart will give an indication of whether you will receive an increase in your LGPS pension – it will not cover all circumstances.



You will receive part of the Pensions Increase in your LGPS pension and part in your State Pension

\*If you receive a pension due to ill health, you may receive all or part of the increase before the age of 55.