

Our Ref: 105181-024

12 February 2026

Hampshire County Council  
[hmwp.consult@hants.gov.uk](mailto:hmwp.consult@hants.gov.uk)  
via email only

Dear Sir /Madam,

**Hampshire MWP Main Modifications Consultation December – February 2026  
Representations on behalf of National Grid Electricity Transmission (NGET)**

National Grid Electricity Transmission has appointed Fisher German LLP to review and respond to local planning authority Development Plan Document consultations on its behalf. We are instructed by our client to submit the following representation with regard to the current consultation on the above document.

**About National Grid Electricity Transmission (NGET)**

National Grid Electricity Transmission plc (NGET) owns and maintains the electricity transmission system in England and Wales. NGET manage not only today's highly complex network but also to enable the electricity system of tomorrow. Their work involves building and maintaining the electricity transmission network – safely, reliably and efficiently. NGET connect sources of electricity generation to the network and transport it onwards to the distribution system so it can reach homes and businesses.

National Grid Electricity Distribution (NGED) are the electricity distribution division of National Grid and are separate from National Grid Electricity Transmission's core regulated businesses. Please also consult with NGED separately from NGET.

National Grid no longer owns or operates the high-pressure gas transmission system across the UK. This is the responsibility of National Gas Transmission, which is a separate entity and must be consulted independently.

National Grid Ventures (NGV) develop, operate and invest in energy projects, technologies, and partnerships to help accelerate the development of a clean energy future for consumers across the UK, Europe and the United States. NGV is separate from National Grid's core regulated businesses. Please also consult with NGV separately from NGET.

National Energy System Operator (NESO) has taken over the electricity and gas network planning responsibility from National Grid Electricity System Operator Limited (NGESO) as of 1st October 2024. Early engagement with NESO is recommended in order to establish available supply capacity to any potential development sites and what, if any, reinforcement is required to ensure adequate continued supply. Please consult with NESO separately from NGET.

**NGET assets within the Plan area**

Following a review of the above Minerals and Waste Plan Document Main Modifications Consultation, we have identified one or more NGET assets within the Plan area. Details of NGET assets are provided below.

**Asset Description**

ZH ROUTE TWR (228 - 369): 400kV Overhead Transmission Line route: BRAMLEY - WEST WEYBRIDGE 1 - BRAMLEY - WEST WEYBRIDGE 2.

4YG ROUTE TWR (040 - 110): 400kV Overhead Transmission Line route: BRAMLEY - DIDCOT 1 - BRAMLEY - DIDCOT 2.

4VX ROUTE TWR(001 - 052): 400kV Overhead Transmission Line route: BRAMLEY - FLEET 1 - BRAMLEY - FLEET 2.

YYM ROUTE TWR (109-229): 400kV Overhead Transmission Line route: BRAMLEY - MELKSHAM 1 - BRAMLEY - MELKSHAM 2.

VB ROUTE TWR (004 - 122): 400kV Overhead Transmission Line route: FLEET - LOVEDEAN 1 - FLEET - LOVEDEAN 2.

ZH ROUTE TWR (228 - 369): 400kV Overhead Transmission Line route: BRAMLEY - WEST WEYBRIDGE 1 - BRAMLEY - WEST WEYBRIDGE 2.

4VX ROUTE TWR(001 - 052): 400kV Overhead Transmission Line route: BRAMLEY - FLEET 1 - BRAMLEY - FLEET 2.

4YE ROUTE TWR (023 - 065): 400kV Overhead Transmission Line route: BOTLEY WOOD - LOVEDEAN - FAWLEY - LOVEDEAN.

4VF ROUTE TWR (001 - 190): 400kV Overhead Transmission Line route: BOLNEY - LOVEDEAN 1 - BOLNEY - LOVEDEAN 2.

VB ROUTE TWR (004 - 122): 400kV Overhead Transmission Line route: FLEET - LOVEDEAN 1 - FLEET - LOVEDEAN 2.

4YE ROUTE TWR (001 - 022): 400kV Overhead Transmission Line route: Botley Wood - Chilling - Chilling - Lovedean.

4YC ROUTE TWR (001 - 108) 400KV Overhead Transmission Line route LOVEDEAN - MANNINGTON – NURSLING LOVEDEAN – NURSLING

4YB ROUTE TWR (001 - 115): 400kV Overhead Transmission Line route: LOVEDEAN - MANNINGTON - NURSLING - FAWLEY - MANNINGTON.

4YD ROUTE TWR (001 - 047): 400kV Overhead Transmission Line route: FAWLEY - MARCHWOOD - FAWLEY - MANNINGTON

Electrical Substation: BRAMLEY 400KV S/S

Electrical Substation: BRAMLEY 132KV S/S

Electrical Substation: FLEET 132KV S/S

Electrical Substation: FLEET 132KV S/S

Electrical Substation: CHILLING 400KV S/S

Electrical Substation: CHILLING HEAD HOUSE S/S

Cable: BRLE4 - HOLX3R 1 CABLE 2 CABLE SECT: 01-02 CABLE ROUTE: BRAMLEY - HOLLY CROSS 1

Cable: BRLE4 - HOLX3R 1 CABLE 1 CABLE SECT: 01-02 CABLE ROUTE: BRAMLEY - HOLLY CROSS 1

Cable: CHILLING - FAWLEY 1 CABLE SECTION 01-18

Tunnel - CHILLING - FAWLEY.

National Grid Electricity Transmission Plc -FREEHOLD- Bramley

National Grid Electricity Transmission Plc -FREEHOLD- Fleet

National Grid Electricity Transmission Plc -FREEHOLD- Lovedean

National Grid Electricity Transmission Plc -FREEHOLD- Botley Wood

National Grid Electricity Transmission Plc -Absolute Freehold- ANDOVER

A plan showing details of NGET assets is attached to this letter. Please note that this plan is illustrative only. NGET also provides information in relation to its assets at the website below.

<https://www.nationalgrid.com/electricity-transmission/network-and-infrastructure/network-route-maps>

### New Infrastructure

Demand for electricity is expected to rise significantly as the way we power homes, businesses and transport evolves. As the UK transitions towards net zero, fossil fuels will be replaced by increasing volumes of low-carbon electricity, including from offshore wind and other renewable sources.



The UK Government has committed to achieving net zero emissions by 2050, requiring a balanced approach to greenhouse gas emissions and removals. Decarbonising the energy system is central to meeting this national objective.

National Grid Electricity Transmission (NGET) is delivering a range of infrastructure projects across England and Wales to support this energy transition and ensure that the transmission network can accommodate the rapid growth in low-carbon generation.

The way NGET generates electricity in the UK is changing rapidly, and NGET are transitioning to cheaper, cleaner and more secure forms of renewable energy. NGET need to make changes to the network of overhead lines, pylons, cables and other infrastructure that transports electricity around the country, so that everyone has access to clean electricity from these new renewable sources. These changes include a need to increase the capability of the electricity transmission system between the North and the Midlands, and between the Midlands and the South. It is also needed to facilitate the connection of proposed new offshore wind, and subsea connections between England and Scotland, and between the UK and other countries across the North Sea. Taking this context into account, in planning for the area the Council should:

- **Safeguard all existing NGET transmission assets**, including overhead lines, underground cables and substations.
- **Support future reinforcement and expansion**, including works required for the Great Grid Upgrade and other strategic national infrastructure projects.
- **Ensure development proposals located near transmission assets demonstrate that they will not compromise safety, operability, maintenance access, asset replacement, or future network expansion.**
- **Safeguard existing and potential access routes** required for the delivery and removal of Abnormal Indivisible Loads (AILs) associated with the construction, replacement and maintenance of transmission-scale equipment, including large transformers at strategic substations.
- **Resist development or highway alterations that would prejudice, constrain or render impracticable AIL access**, unless suitable mitigation or alternative agreed routes can be secured.
- **Encourage early engagement with NGET** to identify and resolve any potential impacts at the earliest possible stage of the planning process.

Protecting existing assets and enabling future network development will ensure that the Council contributes effectively to national decarbonisation targets while supporting local growth, resilience and energy security.

### Fleet Grid Park project

National Grid Electricity Transmission (NGET), as a statutory undertaker, has a duty to protect its existing operational assets and any future infrastructure that may be required within its landholdings.

Development proposals at the existing Fleet Substation include the provision of a new small Grid Park (33kV substation) extension to be connected back via cable to the main substation. The proposed extension will be built on a small area (<1 hectare) of existing hardstanding outside of the existing fenceline but within NGET's freehold land ownership.

Additional works include the construction of a steel portal-framed storage building and associated hardstanding to the northeast of the existing substation, also within the freehold boundary. It is not clear whether the works would conflict with the current Mineral Safeguarding Area, but there remains a risk of impacting future works, customer cables, and related infrastructure. As such NGET feel any policy affecting their landholding should take account of NGET's present and future asset requirements.

## Further Advice

NGET is happy to provide advice and guidance to the Council concerning their networks. Please see attached information outlining further guidance on development close to National Grid assets.

If we can be of any assistance to you in providing informal comments in confidence during your policy development, please do not hesitate to contact us.

To help ensure the continued safe operation of existing sites and equipment and to facilitate future infrastructure investment, NGET wishes to be involved in the preparation, alteration and review of plans and strategies which may affect their assets. Please remember to consult NGET on any Development Plan Document (DPD) or site-specific proposals that could affect our assets.

We would be grateful if you could add our details shown below to your consultation database, if not already included:

**Partner**  
[ngplanning@fishergerman.co.uk](mailto:ngplanning@fishergerman.co.uk)

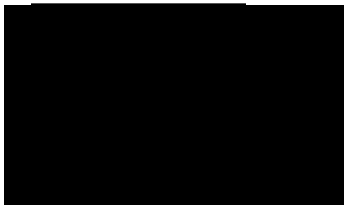
Fisher German LLP  
The Estates Office  
Ashby de la Zouch  
LE65 2UZ

**Development Liaison Officer**  
[box.landandacquisitions@nationalgrid.com](mailto:box.landandacquisitions@nationalgrid.com)

National Grid Electricity Transmission  
National Grid House  
Warwick Technology Park  
Gallows Hill  
Warwick  
CV34 6DA

If you require any further information in respect of this letter, then please contact us.

Yours faithfully,



**Partner**

For and on behalf of Fisher German LLP



## Further Guidance

NGET is able to provide advice and guidance to the Council concerning their networks and encourages high quality and well-planned development in the vicinity of its assets.

Developers of sites crossed or in close proximity to NGET assets should be aware that it is NGET policy to retain existing overhead lines in-situ, though it recognises that there may be exceptional circumstances that would justify the request where, for example, the proposal is of regional or national importance.

NGET's 'Design guidelines for development near pylons and high voltage overhead power lines' promote the successful development of sites crossed by existing overhead lines and the creation of well-designed places. The guidelines demonstrate that a creative design approach can minimise the impact of overhead lines whilst promoting a quality environment. The guidelines can be downloaded here: <https://www.nationalgrid.com/document/345326/download>

The statutory safety clearances between overhead lines, the ground, and built structures must not be infringed. Where changes are proposed to ground levels beneath an existing line then it is important that changes in ground levels do not result in safety clearances being infringed. National Grid can, on request, provide to developers detailed line profile drawings that detail the height of conductors, above ordnance datum, at a specific site.

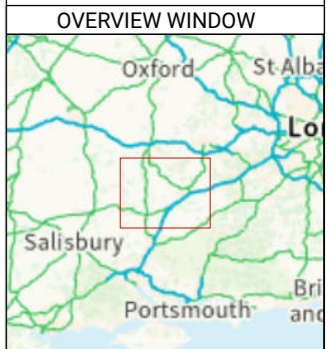
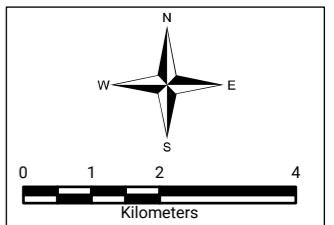
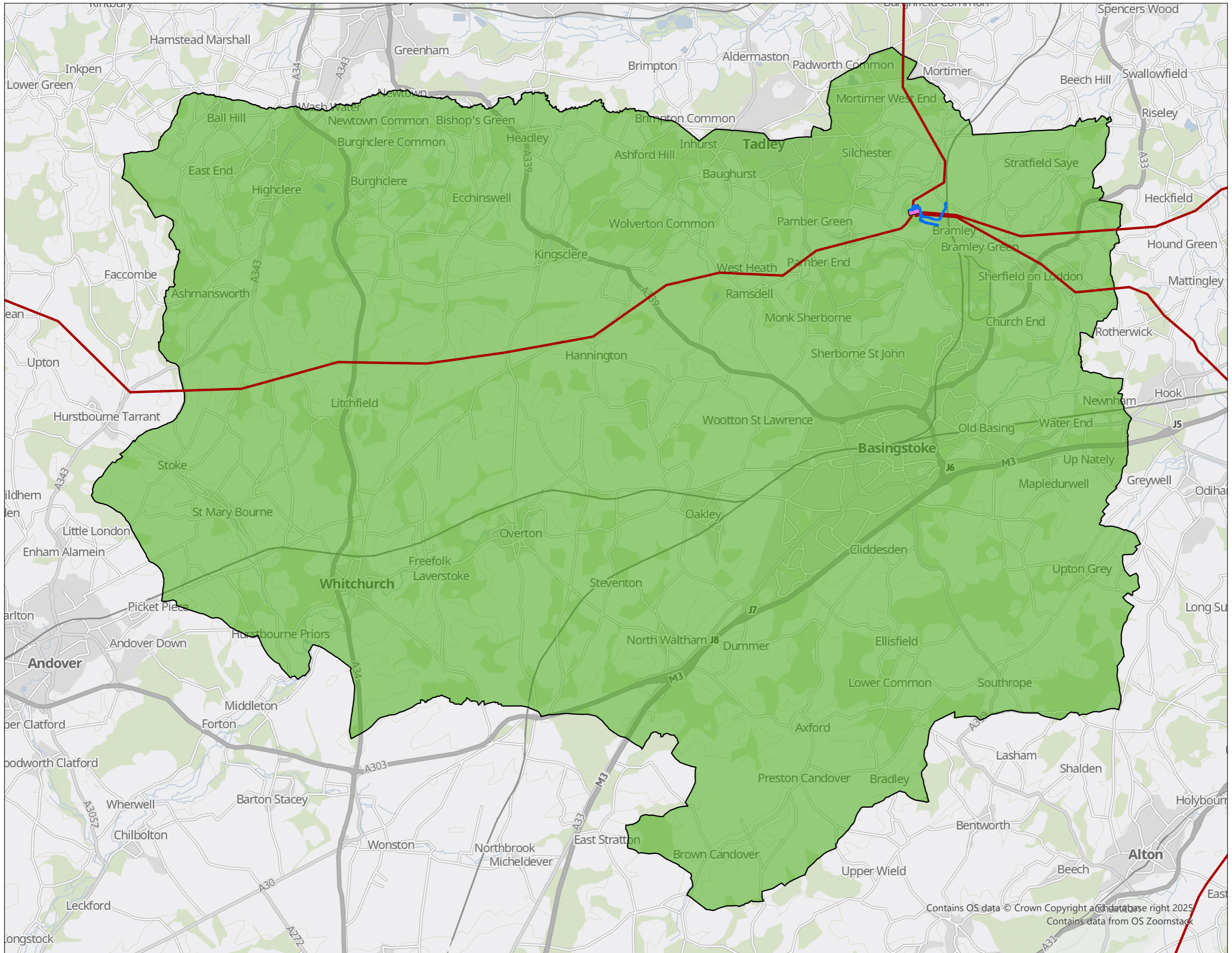
NGET's statutory safety clearances are detailed in their Technical Guidance Note 'Third-party guidance for working near National Grid Electricity Transmission equipment', which can be downloaded here: <https://www.nationalgrid.com/document/349291/download>

## How to contact NGET

If you require any further information in relation to the above and/or if you would like to check if NGET's transmission networks may be affected by a proposed development, please visit the website: <https://lsbud.co.uk/>

For local planning policy queries, please contact: [ngplanning@fishergerman.co.uk](mailto:ngplanning@fishergerman.co.uk)

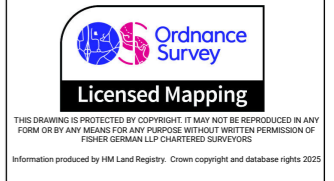




- LEGEND:**
- Cable
  - OHL
  - Station
  - LPA Area

REVISION: A  
 CLIENT: **nationalgrid**  
 SCHEME:  
 PLANNING INTERACTION  
 TITLE:  
 LPA ASSET INTERACTION  
 FP: 105181-024  
 SCALE: 1:111,000 @ A3  
 DATE: 20/05/2025

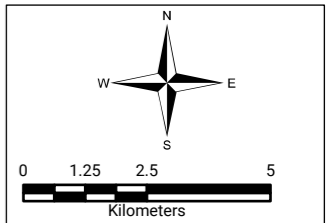
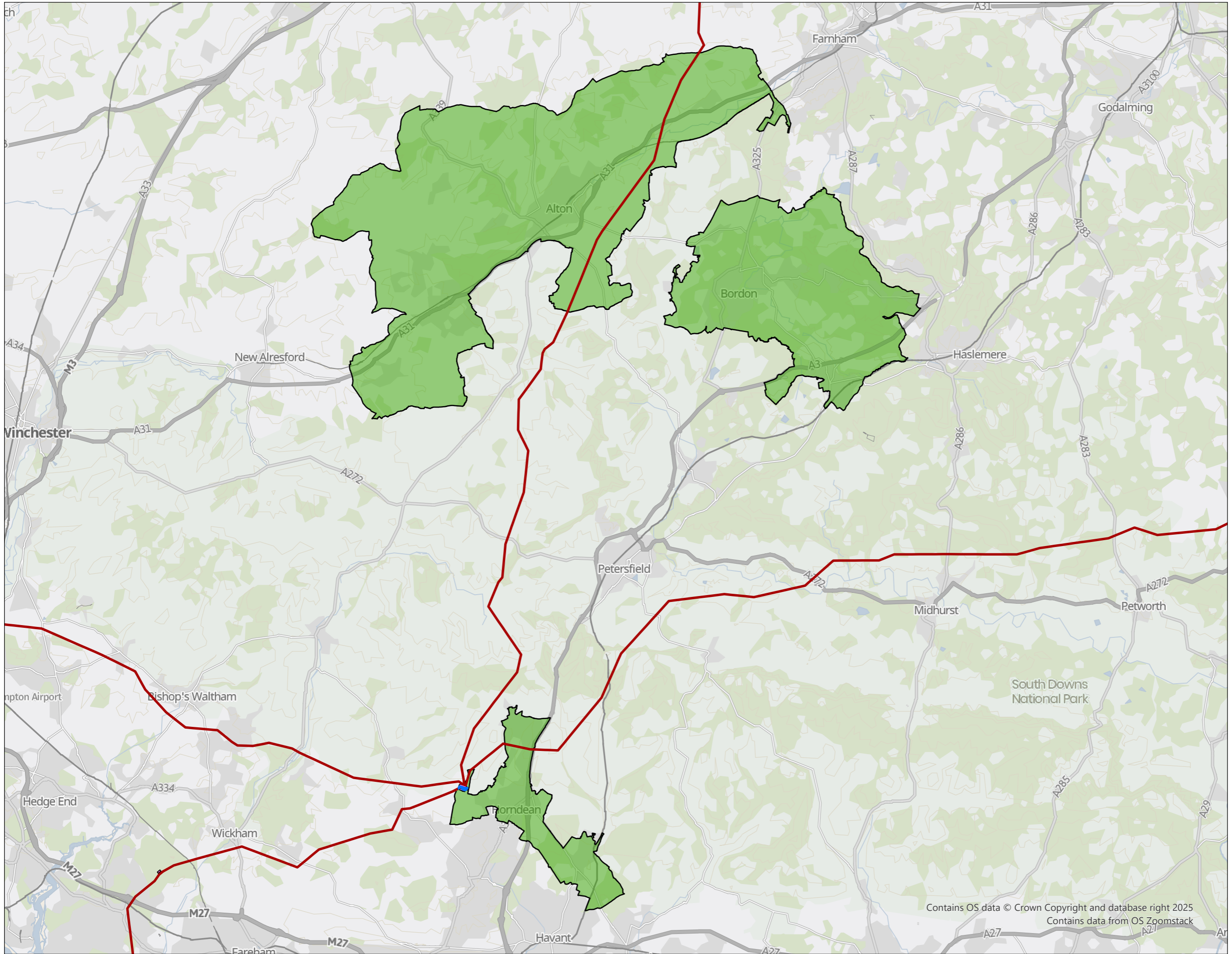
© Crown copyright and database rights 2025  
 Ordnance Survey License Number AC0000849937.



**fisher german**  
 The Estates Office, Norman Court  
 Ashby de la Zouch,  
 Leicestershire, LE65 2UZ  
 01530 412821  
 fishergerman.co.uk

**DRAWING REF:**  
 NG-2025-03-MT-OP-LPA- Basingstoke and  
 Deane

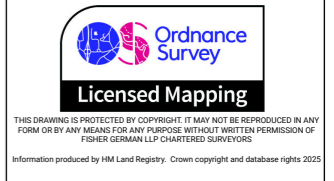
Contains OS data © Crown Copyright and database right 2025  
 Contains data from OS Zoomstack



- LEGEND:**
- Cable
  - OHL
  - Substation
  - LPA Area

REVISION: A  
 CLIENT: **nationalgrid**  
 SCHEME:  
 PLANNING INTERACTION  
 TITLE:  
 LPA ASSET INTERACTION  
 FP: 105181-024  
 SCALE: 1:153,000 @ A3  
 DATE: 20/05/2025

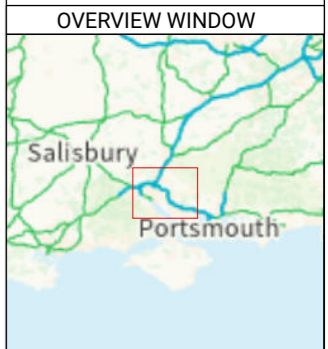
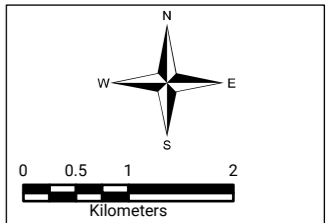
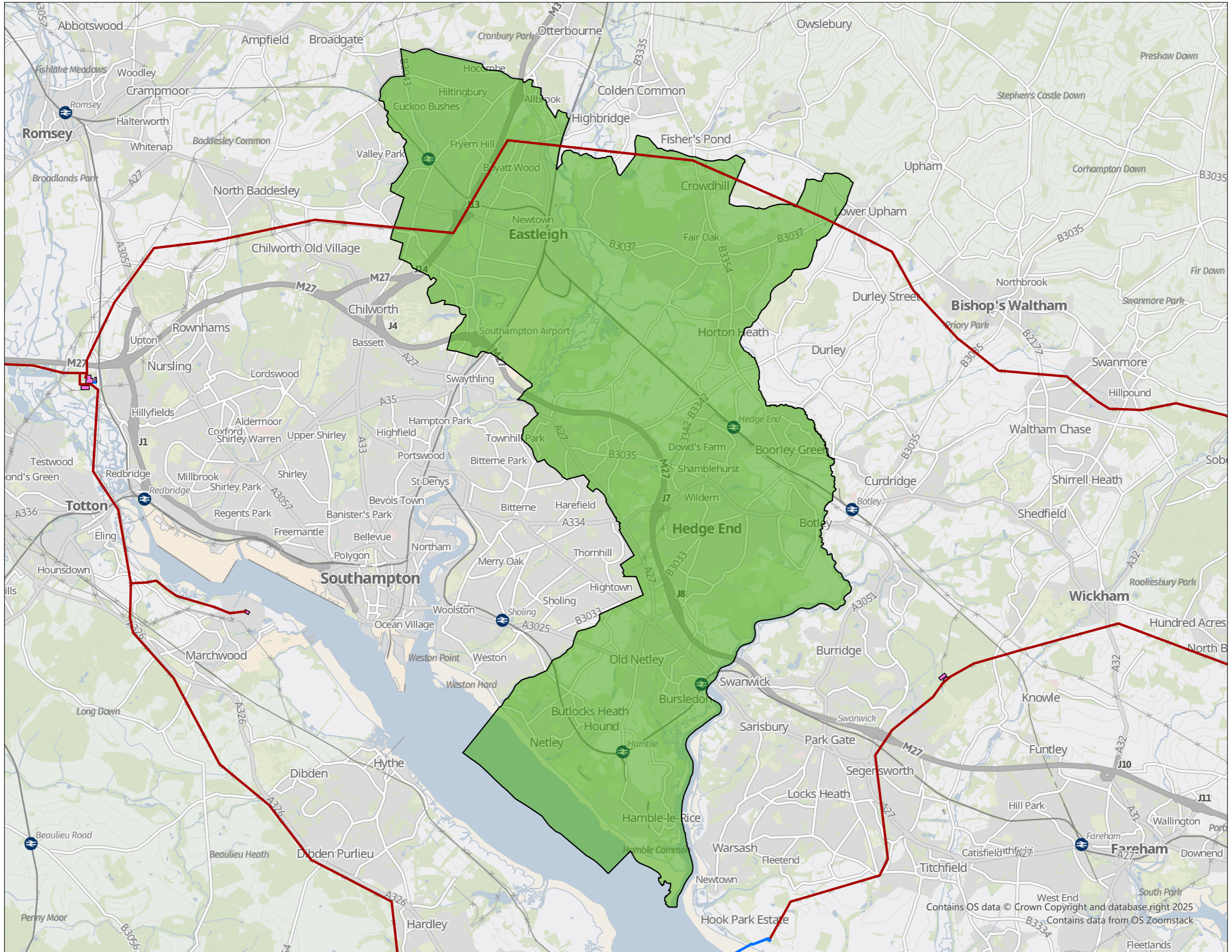
© Crown copyright and database rights 2025  
 Ordnance Survey License Number AC0000849937.



**fisher  
german**  
 The Estates Office, Norman Court  
 Ashby de la Zouch,  
 Leicestershire, LE65 2UZ  
 01530 412821  
 fishergerman.co.uk

**DRAWING REF:**  
 NG-2025-03-MT-OP-LPA- East Hampshire

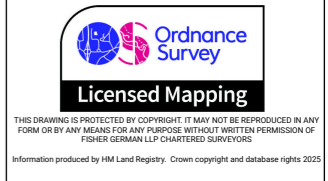
Contains OS data © Crown Copyright and database right 2025  
 Contains data from OS Zoomstack



- LEGEND:**
- Cable
  - OHL
  - Substation
  - LPA Area

REVISION: A  
 CLIENT: **nationalgrid**  
 SCHEME:  
 PLANNING INTERACTION  
 TITLE:  
 LPA ASSET INTERACTION  
 FP: 105181-024  
 SCALE: 1:72,000 @ A3  
 DATE: 20/05/2025

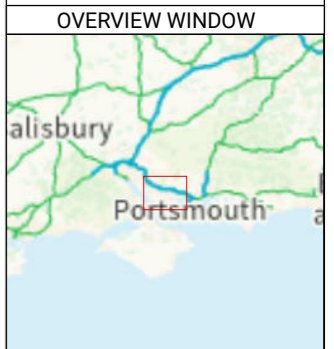
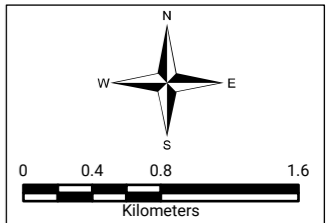
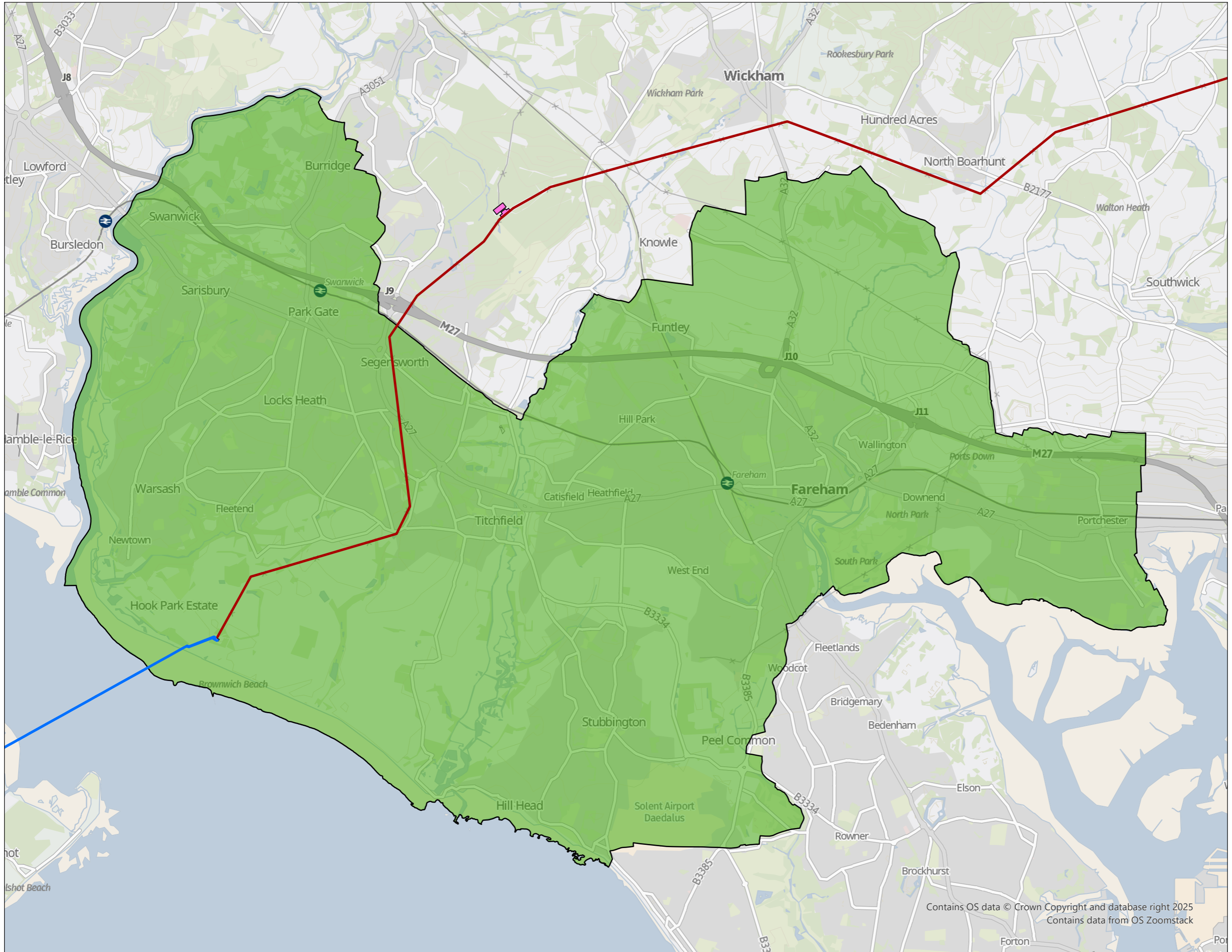
© Crown copyright and database rights 2025  
 Ordnance Survey License Number AC0000849937.



**fisher german**  
 The Estates Office, Norman Court  
 Ashby de la Zouch,  
 Leicestershire, LE65 2UZ  
 01530 412821  
 fishergerman.co.uk

**DRAWING REF:**  
 NG-2025-03-MT-OP-LPA- Eastleigh

Contains OS data © Crown Copyright and database right 2025  
 Contains data from OS Zoomstack



- LEGEND:**
- Cable
  - OHL
  - Substation
  - LPA Area

REVISION: A  
 CLIENT: **nationalgrid**  
 SCHEME:  
 PLANNING INTERACTION  
 TITLE:  
 LPA ASSET INTERACTION  
 FP: 105181-024  
 SCALE: 1:44,000 @ A3  
 DATE: 20/05/2025

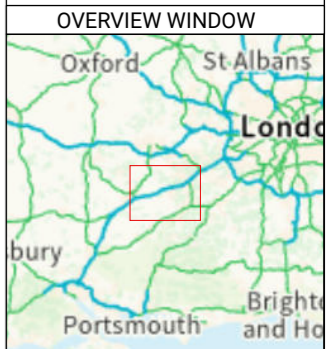
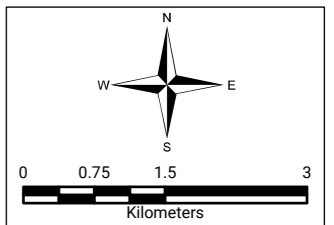
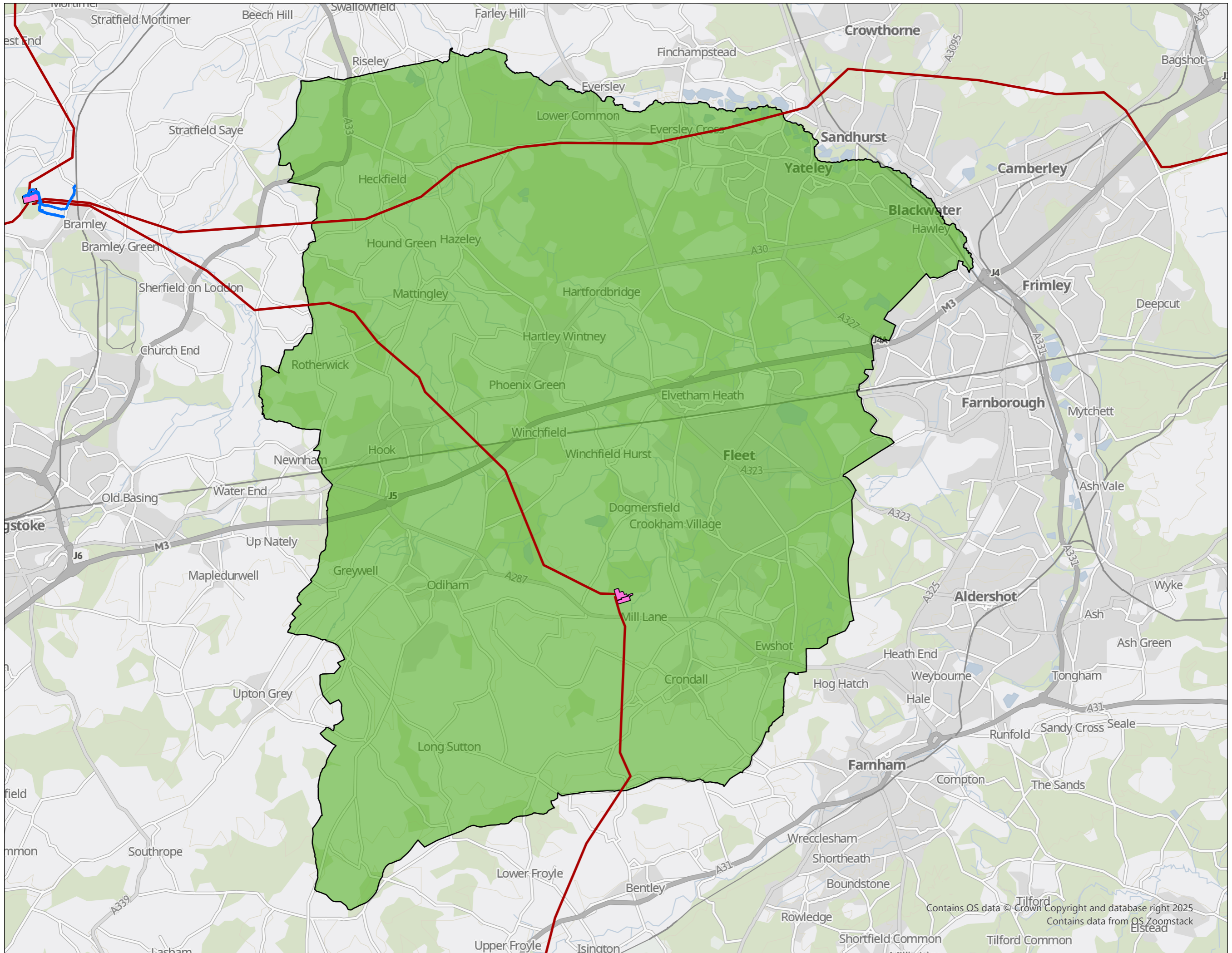
© Crown copyright and database rights 2025  
 Ordnance Survey License Number AC000849937.

THIS DRAWING IS PROTECTED BY COPYRIGHT. IT MAY NOT BE REPRODUCED IN ANY FORM OR BY ANY MEANS FOR ANY PURPOSE WITHOUT WRITTEN PERMISSION OF FISHER GERMAN LLP CHARTERED SURVEYORS.  
 Information produced by HM Land Registry. Crown copyright and database rights 2025

**fisher  
german**  
 The Estates Office, Norman Court  
 Ashby de la Zouch,  
 Leicestershire, LE65 2UZ  
 01530 412821  
 fisherman.co.uk

**DRAWING REF:**  
 NG-2025-03-MT-OP-LPA- Fareham

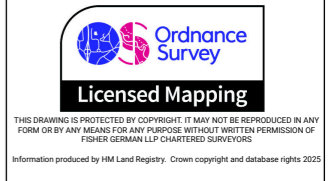
Contains OS data © Crown Copyright and database right 2025  
 Contains data from OS Zoomstack



- LEGEND:**
- Cable
  - OHL
  - Substation
  - LPA Area

REVISION: A  
 CLIENT: **nationalgrid**  
 SCHEME:  
 PLANNING INTERACTION  
 TITLE:  
 LPA ASSET INTERACTION  
 FP: 105181-024  
 SCALE: 1:80,000 @ A3  
 DATE: 20/05/2025

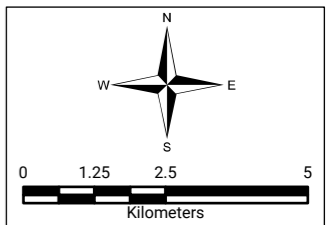
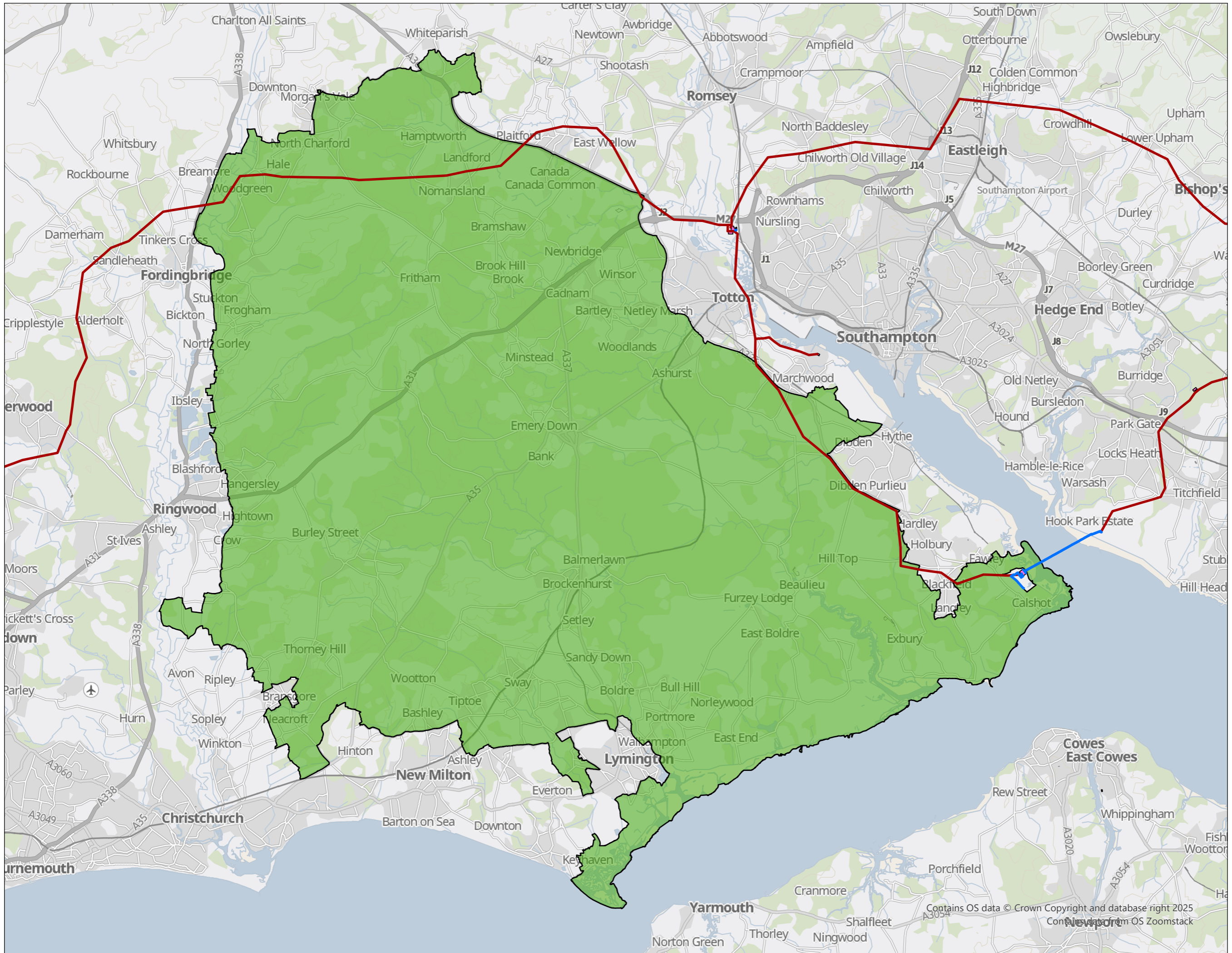
© Crown copyright and database rights 2025  
 Ordnance Survey License Number AC000849937.



**fisher german**  
 The Estates Office, Norman Court  
 Ashby de la Zouch,  
 Leicestershire, LE65 2UZ  
 01530 412821  
 fisherman.co.uk

**DRAWING REF:**  
 NG-2025-03-MT-OP-LPA- Hart

Contains OS data © Crown Copyright and database right 2025  
 Contains data from OS Zoomstack



- LEGEND:**
- Cable
  - OHL
  - Station
  - LPA Area

REVISION: A  
 CLIENT: **nationalgrid**  
 SCHEME:  
 PLANNING INTERACTION  
 TITLE:  
 LPA ASSET INTERACTION  
 FP: 105181-024  
 SCALE: 1:133,000 @ A3  
 DATE: 20/05/2025

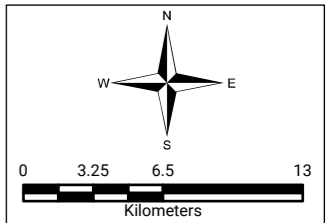
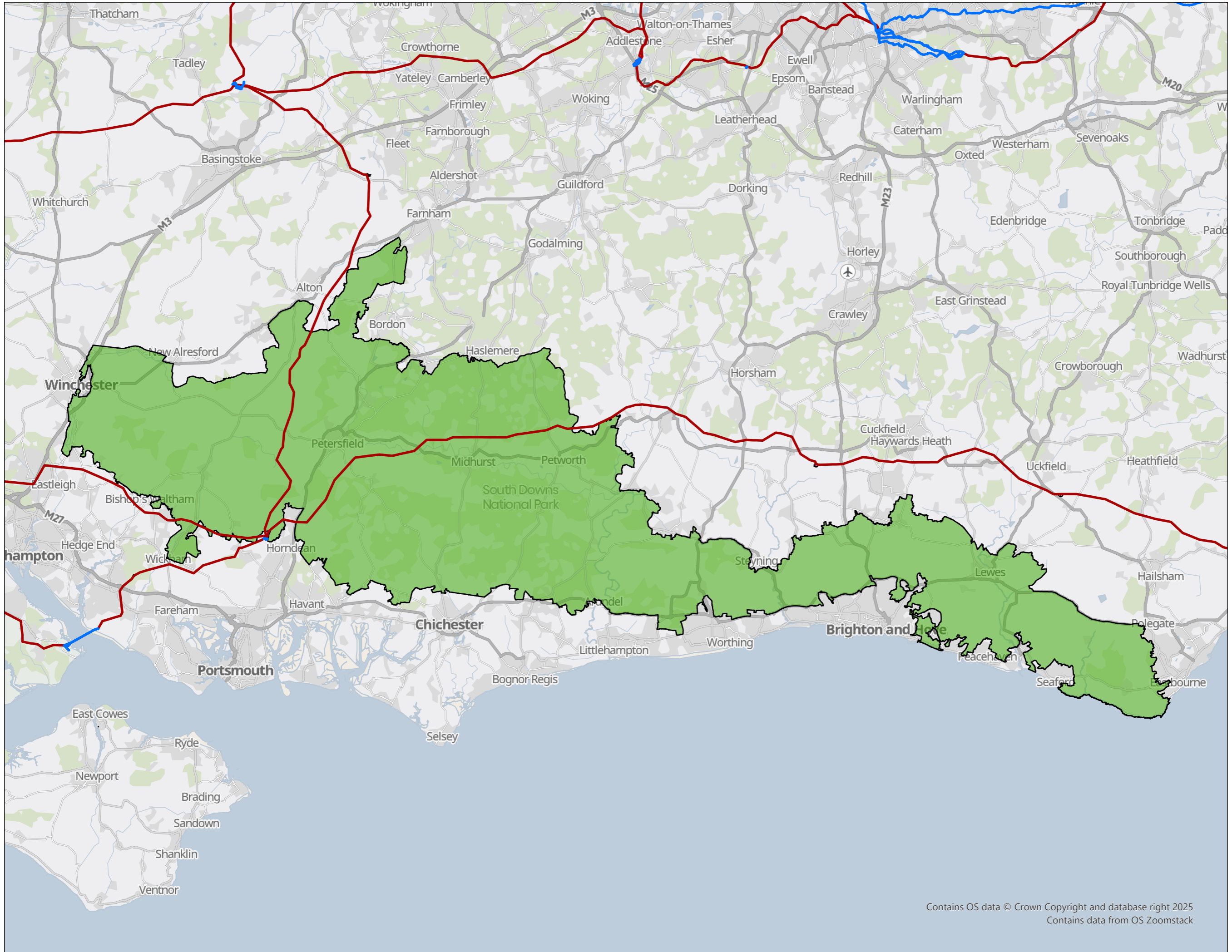
© Crown copyright and database rights 2025  
 Ordnance Survey License Number AC000849937.

THIS DRAWING IS PROTECTED BY COPYRIGHT. IT MAY NOT BE REPRODUCED IN ANY FORM OR BY ANY MEANS FOR ANY PURPOSE WITHOUT WRITTEN PERMISSION OF FISHER GERMAN LLP CHARTERED SURVEYORS.  
 Information produced by HM Land Registry. Crown copyright and database rights 2025

The Estates Office, Norman Court  
 Ashby de la Zouch,  
 Leicestershire, LE65 2UZ  
 01530 412821  
 fisherman.co.uk

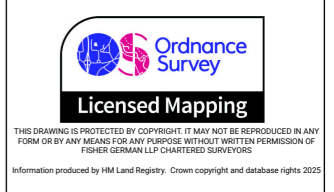
**DRAWING REF:**  
 NG-2025-03-MT-OP-LPA- New Forest  
 National Park

Contains OS data © Crown Copyright and database right 2025  
 Contains data from OS Zoomstack



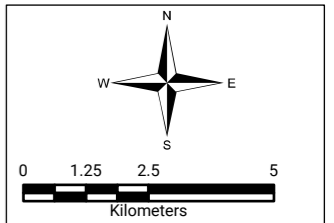
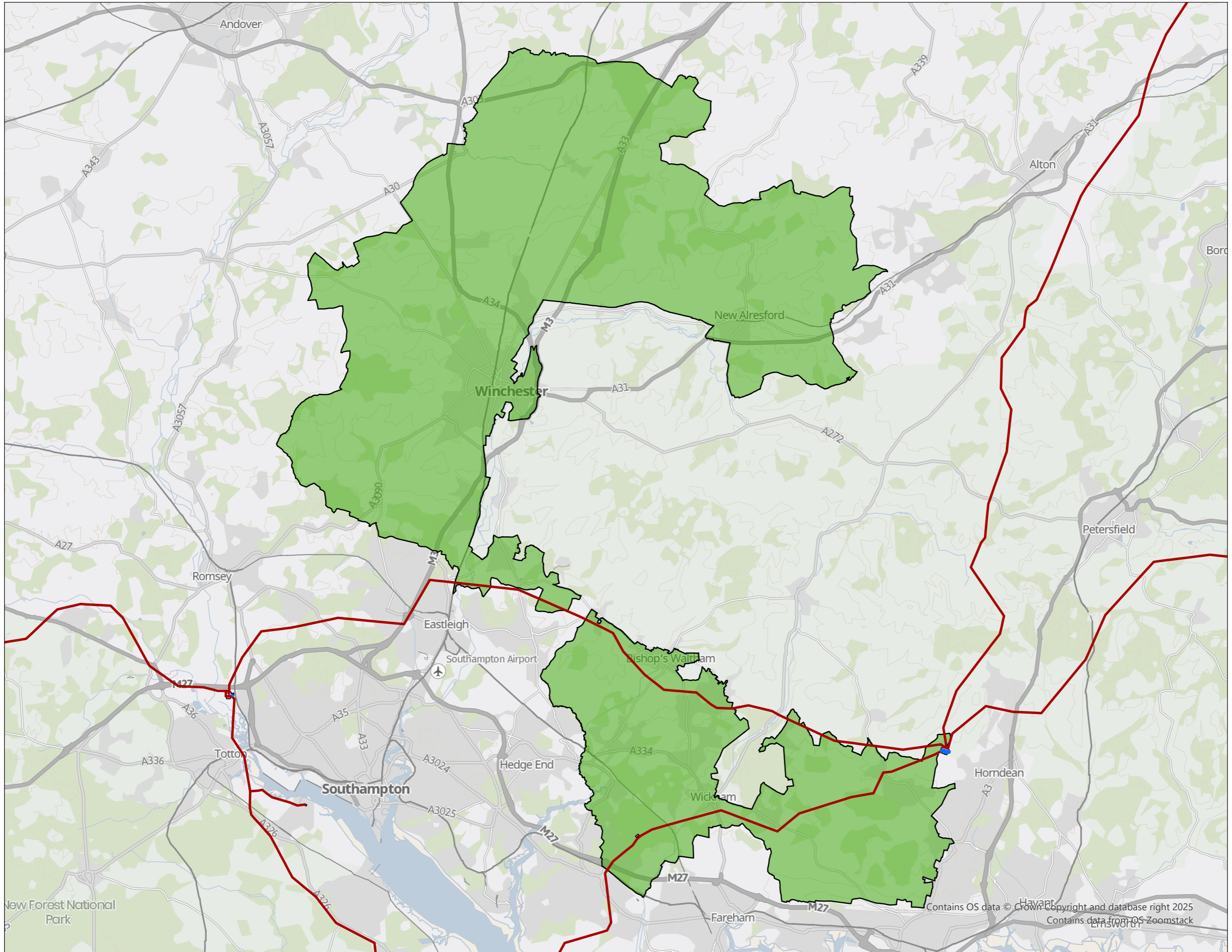
- LEGEND:**
- Cable
  - OHL
  - Substation
  - LPA Area

REVISION: A  
 CLIENT: **nationalgrid**  
 SCHEME:  
 PLANNING INTERACTION  
 TITLE:  
 LPA ASSET INTERACTION  
 FP: 105181-024  
 SCALE: 1:352,000 @ A3  
 DATE: 20/05/2025



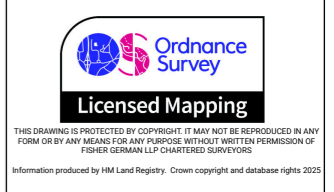
**DRAWING REF:**  
 NG-2025-03-MT-OP-LPA- South Downs National Park

Contains OS data © Crown Copyright and database right 2025  
 Contains data from OS Zoomstack



- LEGEND:**
- Cable
  - OHL
  - Substation
  - LPA Area

REVISION: A  
 CLIENT: **nationalgrid**  
 SCHEME:  
 PLANNING INTERACTION  
 TITLE:  
 LPA ASSET INTERACTION  
 FP: 105181-024  
 SCALE: 1:151,000 @ A3  
 DATE: 20/05/2025

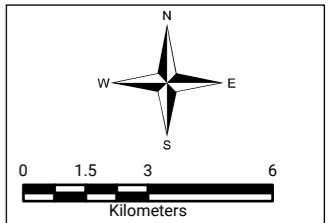
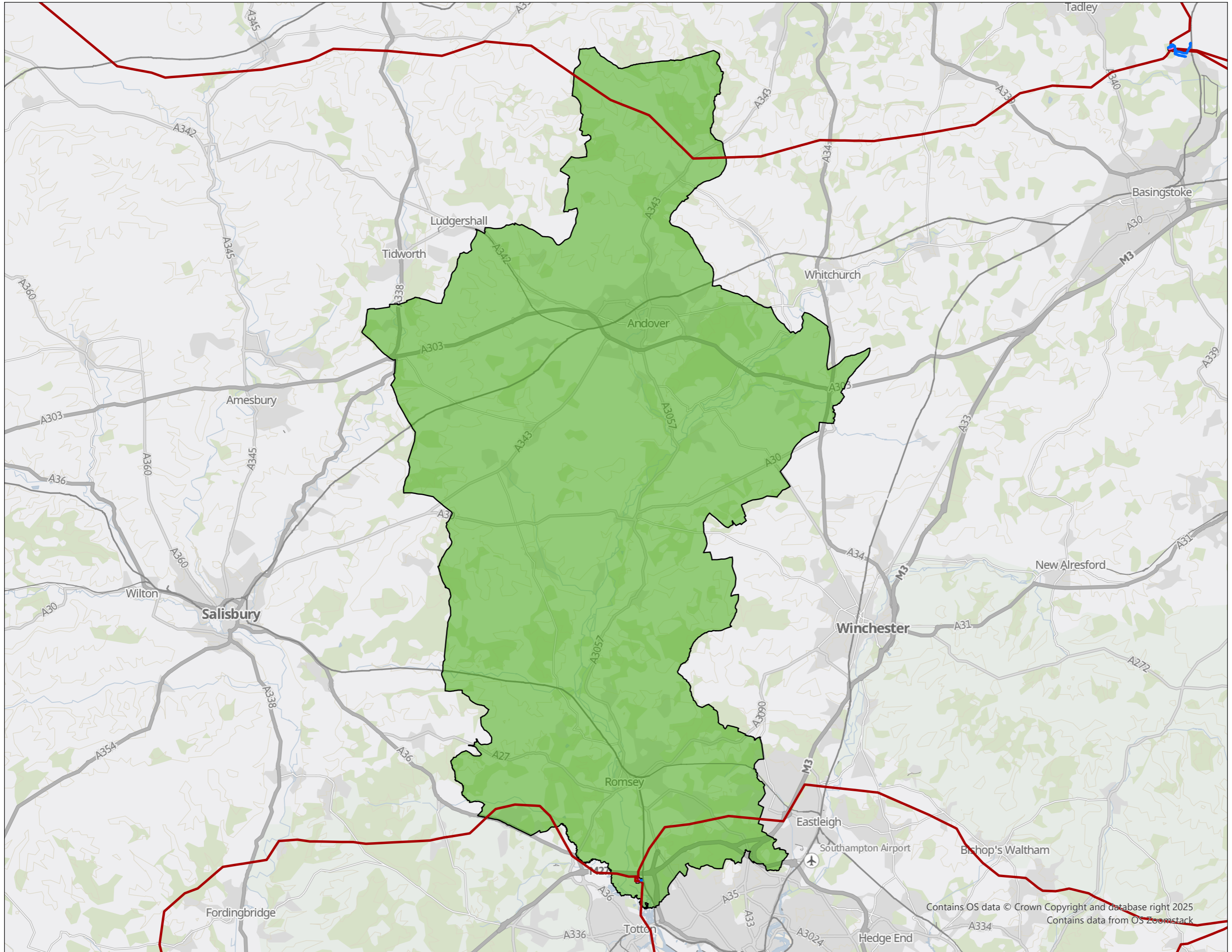


**fisher german**  
 The Estates Office, Norman Court  
 Ashby de la Zouch,  
 Leicestershire, LE65 2UZ  
 01530 412821  
 fisherman.co.uk

**DRAWING REF:**  
 NG-2025-03-MT-OP-LPA- Winchester

New Forest National Park

Contains OS data © Crown Copyright and database right 2025  
 Contains data from OS Zoomstack



- LEGEND:**
- Cable
  - OHL
  - Substation
  - LPA Area

REVISION: A  
 CLIENT: **nationalgrid**  
 SCHEME:  
 PLANNING INTERACTION  
 TITLE:  
 LPA ASSET INTERACTION  
 FP: 105181-024  
 SCALE: 1:182,000 @ A3  
 DATE: 20/05/2025

© Crown copyright and database rights 2025  
 Ordnance Survey License Number AC0000849937.



THIS DRAWING IS PROTECTED BY COPYRIGHT. IT MAY NOT BE REPRODUCED IN ANY FORM OR BY ANY MEANS FOR ANY PURPOSE WITHOUT WRITTEN PERMISSION OF FISHER GERMAN LLP CHARTERED SURVEYORS  
 Information produced by HM Land Registry. Crown copyright and database rights 2025

**fisher german**  
 The Estates Office, Norman Court  
 Ashby de la Zouch,  
 Leicestershire, LE65 2UZ  
 01530 412821  
 fisherman.co.uk

**DRAWING REF:**  
 NG-2025-03-MT-OP-LPA- Test Valley

Contains OS data © Crown Copyright and database right 2025  
 Contains data from OS Zoomstack