

<b>1.0 PARISH</b>	Wield
<b>2.0 HUNDRED</b>	Fawley
<b>3.0 NGR</b>	462900 138800 (Upper Wield) 463650 140400 (Lower Wield)
<b>4.0 GEOLOGY</b>	Clay-with-Flints and tertiary debris (both settlements).

### 5.0 SITE CONTEXT

There are two settlements within the parish that today may be regarded as hamlets: Upper Wield and Lower Wield. Both are notable for their timber framed and thatched cottages.

**5.1** The parish church is at Upper Wield, situated at *c.* 171m AOD at the east end of a ridgeway route from the west. Approximately 100m south-east of the church there is a large green upon which roads converge at all cardinal points. In 1839, the principal cluster of buildings, including the church, was around the north-west side of the green but also stretching north-westwards along a lane for 150m to Wield Manor and a road junction just beyond (Map 3 / 1). There is no surface water at Upper Wield and wells must have been important. There is a well in the front garden of Wield Manor. The large number of ponds (Map 3) was clearly a necessity. Limited C20 housing has occupied the south side of the green and the west side of the lane to Wield Manor House.

**5.2** Lower Wield is 1.6km to the north-north-east at *c.* 160m AOD. The Tithe Map shows that in 1839 there was a cluster of farms around a green with smaller properties hugging the western margin of a lane that runs southwards. This arrangement has changed little but the green, and its ponds, has been absorbed into fields and gardens.

### 6.0 PLAN TYPE & DESCRIPTION (Maps 3 / 1, 3 / 2, 4 / 1, 4 / 2, 5 / 1 & 5 / 2)

**6.1 Upper Wield: church & manor / irregular agglomeration** Upper Wield originated as a church and manor site but the picture is a little complicated. The parish church is C 1150 but Wield Manor is 200 metres to the north-west. The present house is C18 but it is constructed upon the cellars of its predecessor. Nearer to the church at *c.* 100m north-east, Wield House (Farm) is also C18 and stands on an earlier site (HTS 6: 324). Both houses stand within their own grounds, and in 1839 they were accompanied by large ponds.

**6.1.1** There were two greens at Upper Wield and there is a puzzle regarding the development of cottages around the larger of these. This green is an extensive feature and it can still be seen as stretching from Pond Cottage, south-east of the church, for at least *c.* 250m north-eastwards. Pond Cottage (C19) is on the west side of the green but there is no pond and none is shown on the Tithe Map (1839). However, there must have

been one because Pond Cottage faces onto a large oval space (c. 60m x 40m), that loses height towards the centre thus forming a conical bowl. This is self evidently the site of a pond but in it two parallel double cottage units were built. Of these, Pound Cottage is C19, but

Rose Cottage and Corner Cottage are C17. It is perplexing as to why these cottages should have been built *within* a dry pond when the Tithe Map suggests that there was vacant space on the margins of the green to the east and south, including the site of Pond Cottage, a post-Tithe Map structure. The most probable answer is that this was a disused pond that became available as a very unusual squat. When in use the pond no doubt served the settlement pond that is shown on the Tithe Map as being on its north-east side, in the grounds of Wield House Farm.

**6.1.2** A second green can be identified on the Tithe Map (Maps 3 / 1 & 6). It was located between the church and Wield House Farm and extended north-westwards without quite reaching Wield Manor. The south-east end of this green had been divided up into four units by 1839, three of them with cottages (Map 3). C20 houses have been added since then. However, this central green provides the answer to the puzzles of Upper Wield. In its original form, a long, triangular green stretched south-east / north-west with a lane on the east side. At the south end there was a large pond; the church and demesne farm (Wield House) faced each other across the green. The manor house was at the north-west end of the green but its curtilage extended south eastwards to include the church. The Tithe Map shows that the Manor House grounds were separated from the green by a fence. In time there were encroachments (perhaps encouraged) both at the laneside and on the green itself. As demand for space increased, Church Cottage (surely at least C17 but listed as C18) occupied a long strip of land, formerly a part of the road and adjoining the south boundary of the churchyard. The large pond, either dry or drained, was also occupied, the cottages completing an almost unbroken circle of occupation west of the community pond (an irregular agglomeration). Pond Cottage filled the only vacant corner in C19. The larger green extended from the old pond eastwards.

**6.1.3** *Drove roads* Upper Wield is at the centre of a number of ox drove roads. One of these actually entered the settlement along the south side of the churchyard, and in so doing approached what was once a large pond. Heading east of this, the larger linear green was reached. The pond was nearby at Wield House Farm. Wield Manor house was sited away from all this activity at the other end of the settlement lane. If Upper Wield was a stopping point for oxdroves there are also signs that at some point this through trade was deliberately discouraged. The large pond, the only one known on the southern green, was occupied by cottages, and the western approach road was virtually blocked by the construction of Church Cottage. The date of the building construction suggests that this was happening in the C17.

**6.2** **Lower Wield: *irregular agglomeration + irregular row*** The 1839 Tithe Map shows a triangular green accessed by roads from all cardinal points. A number of farms fronted onto the green. On the north side, Lower Wield Farm was the largest, and it was probably associated with the demesne. The other farms were relatively small but Nicholas' Farmhouse is C16 and Medieval origins for some are certainly possible.

South from the green settlement is confined to the west side of the road. It takes the form of long plots almost at right angles to the roadside. Three of them are almost exactly 220 yards long and so they must have been set out on the furlongs of the open fields. One of these three, Windmill Cottage, dates to *c.* 1600 (Paragraph 9.0) and so it is highly likely that these are Medieval enclosures, perhaps the result of quit rents.

**6.2.1 Drove road** A drove road once connected Upper Wield to Lower Wield, taking the cattle to the green at Lower Wield Farm. From here the road headed east along Rushmoor Lane reaching Rushmoor Pond after *c.* 1km 464800 I40950. Rushmoor Pond was a major route intersection, but it is also the meeting point of three parish boundaries, a testament to the antiquity of pond and roads.

**6.3 Site visit condition:** strong, low sun; some overcast spells (23.3.99)

## **7.0 ARCHAEOLOGICAL POTENTIAL** (Maps 5 / 1 & 5 / 2)

### **7.1 AsAP**

#### **Upper Wield**

**7.1.1** East of the lane from Wield House Farm to Wield Manor. The Tithe Map shows limited roadside settlement here but it could be of Medieval origin, fronting onto the central green.

**7.1.2** The west and south grounds of Wield Manor down to the northern boundary of the churchyard; also the northern portion of the central green part of which is now occupied by C20 housing.

**7.1.3** A small area south-east of the church that is the site of Pond Cottage, the west side of the former south pond.

**7.1.4** A triangular parcel of land at the eastern extreme of the grounds of Wield Farm House. It has been included because its shape and size suggest a cottage site fronting onto the green.

### **7.2 AsHAP**

#### **Upper Wield**

**7.2.1** The grounds of Wield Manor at the north end of the settlement. This is a site of Medieval origin.

**7.2.2** An area at the south of the settlement including the churchyard, the south end of the central green, Wield House Farm, the curtilage of Church Cottage, the site of the south pond with a slight extension southwards. The parish church is Medieval; the importance of the rest of this area has been stressed in Paragraph 6.1 and sub-sections.

### **7.3 AsAP**

#### **Lower Wield**

**7.3.1** A single area extends from Lower Wield Farm in the north, southwards to include the settlement areas on the south side of the green and on the west side of the southbound lane. Paragraph 6.2 has made the case for Medieval settlement in these areas.

### 8.0 CHURCH & CHURCHYARD

#### 8.1 St James

- Nave & chancel *c.* 1150;
- C12 south door with sundial on west jamb;
- C12 door on north side blocked;
- C14 windows in north and south walls of nave;
- C15 details *e.g.* nave windows;
- 1884-5 restoration of chancel, otherwise work of this period is less extensive than Pevsner and Lloyd imagined (1967: 656). See note below.
- C11 / 12 Purbeck Marble font found in a garden in the Close at Winchester;
- Hagioscopes either side of C12 chancel arch;
- Monument to William Walop † 1617.

**NB** At the time of the site visit much of the plaster render on the north wall had come adrift. This had revealed some original features indicating that most of the nave and chancel are of C12 fabric.

**8.2 Wall paintings** Traces of C13 or earlier painting on all walls of the nave. One on the north wall is a post-Medieval over-painting (with inscription) upon a Medieval original. A consecration cross can be seen on the north side of the west door.

### 9.0 BUILDINGS (Maps 4 / 1 & 4 / 2)

PRN	Details	Dates	Grade
*	Laurel Farmhouse, Rushmore Lane, Lower Wield: barn 15m west of	<i>c.</i> 1800	II
*	Laurel Farmhouse: granary 15m north- west of	C18	II
*	Lower Wield Farmhouse, Lower Wield	C18, 19	II
*	Lower Wield Farmhouse: barn 50m east of	C18	II
*	Nicholas Farmhouse, Lower Wield	C16, 17, 1757	II
*	Nicholas Farmhouse: stable 35m south-east of	C18	II
*	Pitters Farmhouse, Lower Wield	C18, 19, 20	II
*	White's Farmhouse, Lower Wield: barn 15m east of	C18	II
*	Windmill Cottage (once 3), Lower Wield	<i>c.</i> 1600, C20	II
*	King's Farmhouse, Lower Wield	C18, 1807, C20	II
*	King's Farmhouse: barn 15m north-east of	C17, 18, 19	II
*	Wield Manor (The Manor), Upper Wield	C18, 19	II
*	Manor Farm: cartshed, Upper Wield	C18	II
*	Wield House: garden wall south-west & east of	C16, 19	II
*	Church of St James, Upper Wield	<i>c.</i> 1150, C15, 1884	I
*	Church Cottage, Upper Wield	C18	II

*	Pond Cottage (once 2), Upper Wield	C19	II
*	Pound Cottage (once 2), Upper Wield	C19	II
*	Rose Cottage & Corner House (once 2), Upper Wield	C17, 19	II
*	Church Farmhouse, Upper Wield	C18	II
*	Boxcott, Upper Wield	C18, 19	II
*	Wield House Farm, Upper Wield: granary 30m south-west of	C19	II

**10.0 SMR DATA** Maps 4 / 1 & 4 / 2)

SW 462000 138000, 464000 140000 NE (Upper Wield)

SU 63 NW	No.		
	6	462840 138760	Medieval. Parish Church (8.0).
	11	462000 138070	Medieval. Square enclosure.
	24	462900 138800	Medieval. Domesday reference.
	47	462920 139800	Undated. Linear feature. AP ref.: BSF25-27.
	48	462520 139410	Undated. Curvilinear feature which runs through present field boundary. HCC AP ref.: run 17e31; AUM54; RCHME AP ref.: SU 6239 / 14, 19-26, 29-32, 27-80.
	49	462490 139170	Undated. Linear / rectilinear features. AP ref.: BSF23.
	50	462400 139330	Undated. Enclosure. AP ref.: AUM56 6139/13/203.
	51	462040 139680	Undated. Complex of rectilinear features. HCC AP ref.: 17e31; AP ref.: 6139/ 13 /203; RCHME AP ref.: SU 6139/21.

SW 463000 139500, 464200 141000 NE (Lower Wield)

SU 64 SW	35	463500 140500	Mesolithic. Micro burin find. Winchester Museum.
	41	463500 140400	Post-Medieval. Donkey wheel, possible site of.
	42	463500 140400	Medieval. C16 timber-framed farmhouse. C17, 18 modifications.
	68	463070 140770	Undated. Linear feature. AP ref.: 6340/1/74-5.

**10.2 Hampshire Romano-British Settlements survey**

*Hants No.*    *NGR*                      *Parish*                      *NAR / NMR Nos*  
None listed.

**10.3 Scheduled Ancient Monuments (SAMs)**

<i>SAM No.</i>	<i>NGR</i>	<i>Site</i>
None.		

### 11.0 ADDITIONAL SITES / FEATURES (Map 4)

#### 11.1 *Upper Wield*

1	462780 138930	Site of two ponds as represented on the Tithe Map of 1839
2	462920 138845	Boundary bank and pond as represented on the Tithe Map
3	462945 138765	Boundary bank as represented on the Tithe Map
4	462940 138730	Possible pond site occupied by two cottages (3 units) of which Rose Cottage and Corner Cottage are C17.

#### 11.2 *Lower Wield*

1	463640 140400	Remains of green with former ponds at 2, 3 & 4
2	463660 140380	Site of pond represented on the Tithe Map of 1839
3	463715 140375	Site of pond represented on the Tithe Map of 1839
4	463730 140380	Site of pond represented on the Tithe Map of 1839
5	463555 140375	Site of former pond or quarry identified during site visit
6	463725 140360	Earthworks; probably former boundaries
7	463650 140320	Earthworks; probably a field system
8	463640 140310	Slight east / west hollow-way from White's Farm
9	463650 140040	Earthworks; probably a field system.

### 12.0 CARTOGRAPHIC SOURCES

- Tithe Map 21M65/F7/257/2 (1839 / 1845)
- GSGB 300 Alresford
- OS 1: 2500 (Upper Wield) SW 462505 138480, NE 463400 139080  
(Lower Wield) SW 463380 139670, NE 463980 140570
- OS 1: 25000 Pathfinder 1244 (SU 63/73), Alton & Four Marks.

### 13.0 BIBLIOGRAPHY

- HTS 6: 321-26 (both settlements)
- VCH 3: 345-7
- Pevsner N & Lloyd D 1967 *The Buildings of England; Hampshire & the Isle of Wight* London, Penguin Books

### 14.0 PRIMARY HISTORIC SOURCES

#### 14.1 **Domesday Book**

2, 21 (Land of the Bishop of Winchester). Durand holds *Wield* from the Bishop. Before 1066 2 free men held it from the Bishop, but they could not withdraw with the land. Then and now it answered for 10 hides. Land for 9 ploughs. In lordship 5 ploughs; 9 villagers and 6 smallholders with 4 ploughs. Total value together before 1066 £8; later £6; now £10. 2 freemen hold 1 hide of this manor. They have 1 plough with 1 smallholder. Value 20s.

#### 14.2 **Subsidy Rolls** Upper and Lower Wield taxed together.

1334	£0.19.1
------	---------

1524	<i>1st survey</i>	£2.2.8	(23 taxpayers)
	<i>2nd survey</i>	£2.1.2	(23 taxpayers)

### 14.3 Manorial Documents

Manors recorded: Wield

### 14.4 Hearth Tax 1665

52 hearths chargeable (16 houses)

18 hearths not chargeable (14 houses). Total: 30 houses.

NB Presumably Upper and Lower Wield were taxed together as they had been for the 1334 and 1524 Lay Subsidies.

### 15.0 PLACE NAME

1086 *Walde*; 1167 *Walda Episcopi*; 1256 *Welde*. OE *weald* 'forest' (ie a large tract of ancient unfelled woodland, later 'wooded downland' (Coates, 1989: 176).

### 16.0 PHOTOGRAPHS

### 17.0 OTHER PROJECT ELEMENTS

#### 17.1 Pre-Conquest Charters

Nothing listed by Sawyer but HTS 6: 226 alludes to a chalkpit boundary marker of in a charter of Edward the Elder.

#### 17.2 Other parish settlements include:

<i>Name</i>	<i>MSP no.</i>	<i>Map ref.</i>	<i>First recorded</i>
Pugdells	2551		1263

#### 17.3 Enclosures

*Parliamentary:*

<i>NEP no.</i>	<i>Act</i>	<i>Order</i>	<i>Award</i>	<i>Details</i>
None.				

*Formal Agreements:*

<i>NEP no.</i>	<i>Agreement</i>	<i>Award</i>	<i>Details</i>
None.			

NB Informal enclosures only.

#### 17.4 Commons & Greens (residual)

Wield Green remains.

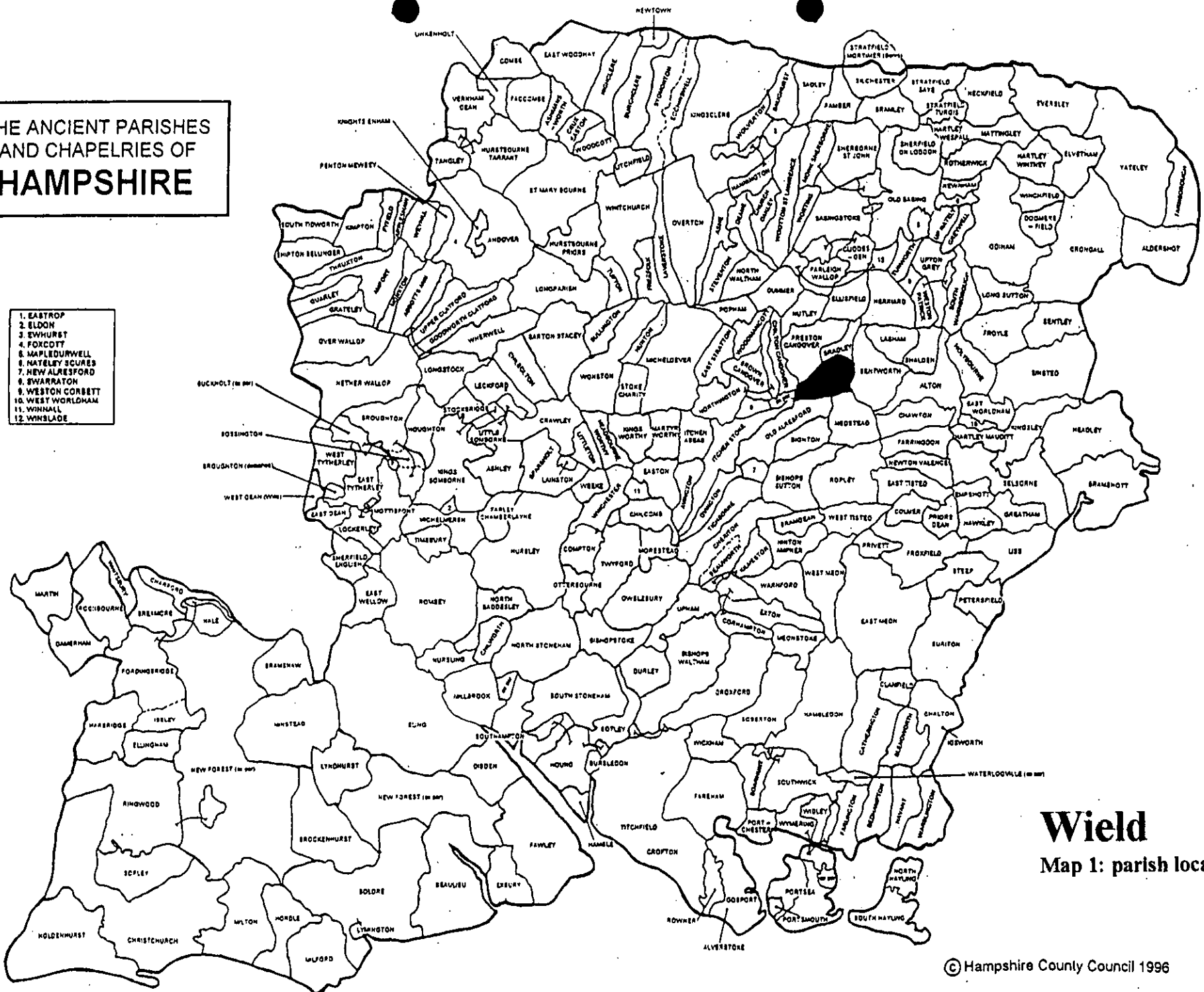
**18.0 ILLUSTRATIONS**

- 1 Map 1: Parish location (not to scale)
- 2 Map 2: Settlement location at 1: 2500
- 3 Map 3 / 1: 1839 Tithe Map (Upper Wield) transcribed at 1: 2500 reduced to 71%
- 4 Map 3 / 2: 1839 Tithe Map (Lower Wield) transcribed at 1: 2500 reduced to 71%
- 5 Map 4 / 1: Development & archaeological features (Upper Wield) at 1: 2500 reduced to 71%
- 6 Map 4 / 2 Development & archaeological features (Lower Wield) at 1: 2500 reduced to 71%
- 7 Map 5 / 1: Areas of archaeological potential (Upper Wield) at 1: 2500 reduced to 71%
- 8 Map 5 / 2: Areas of archaeological potential (Lower Wield) at 1: 2500 reduced to 71%
- 9 Map 6: Medieval Upper Wield: a conjectural layout adapted from the Tithe Map of 1839.

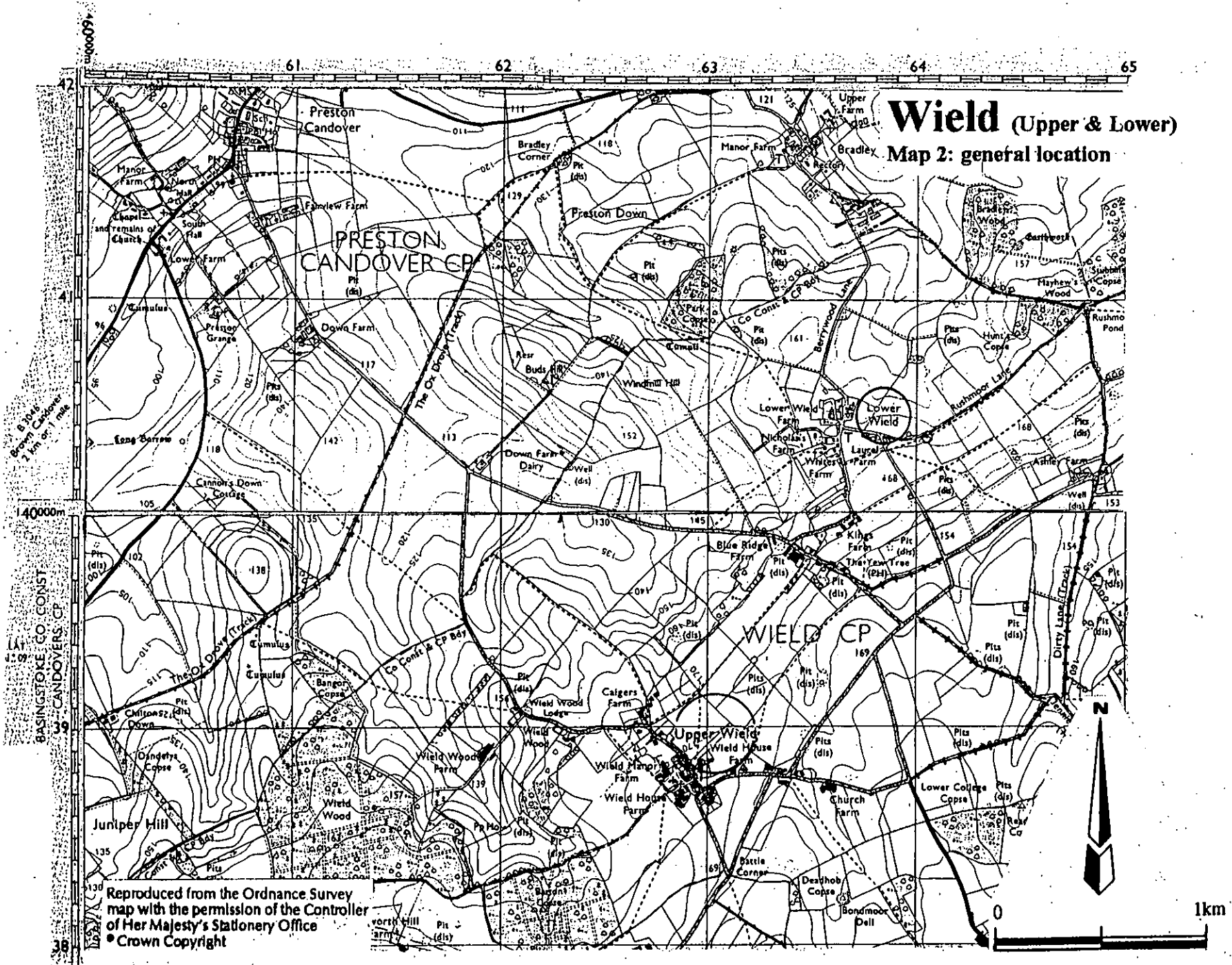


THE ANCIENT PARISHES  
AND CHAPELRIES OF  
**HAMPSHIRE**

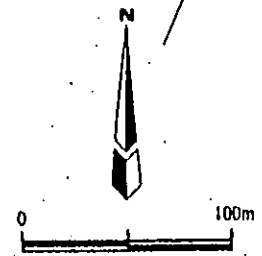
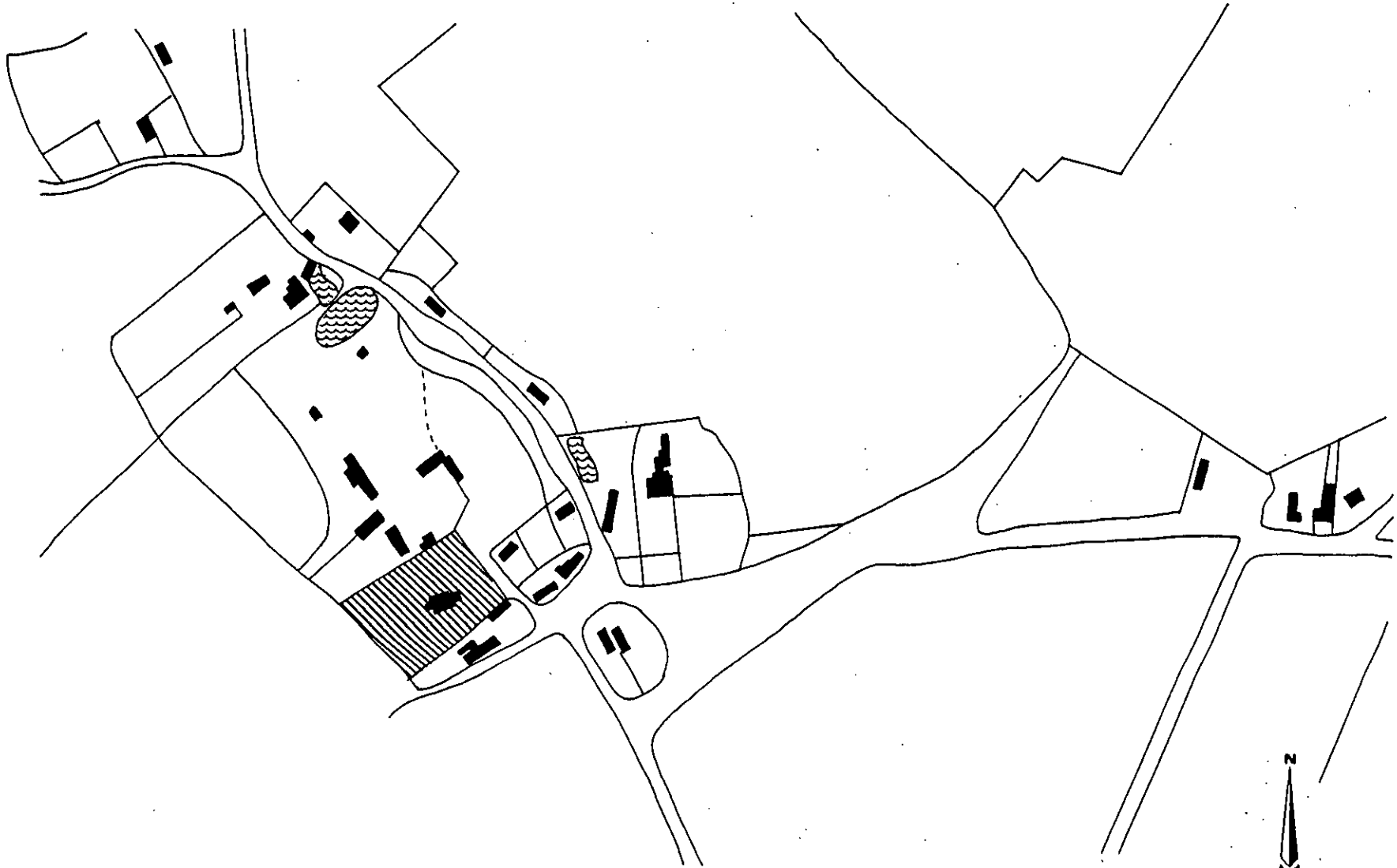
- 1. EASTROP
- 2. ELDOM
- 3. EWHURST
- 4. FOXCOTT
- 5. MAPLEDURWELL
- 6. NATELEY SCURES
- 7. NEW ALRESFORD
- 8. SWARRATON
- 9. WESTON CORBETT
- 10. WEST WORTLEHAM
- 11. WINNALL
- 12. WINSLADE



**Wield**  
Map 1: parish location

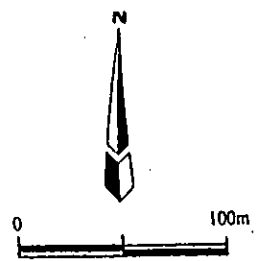
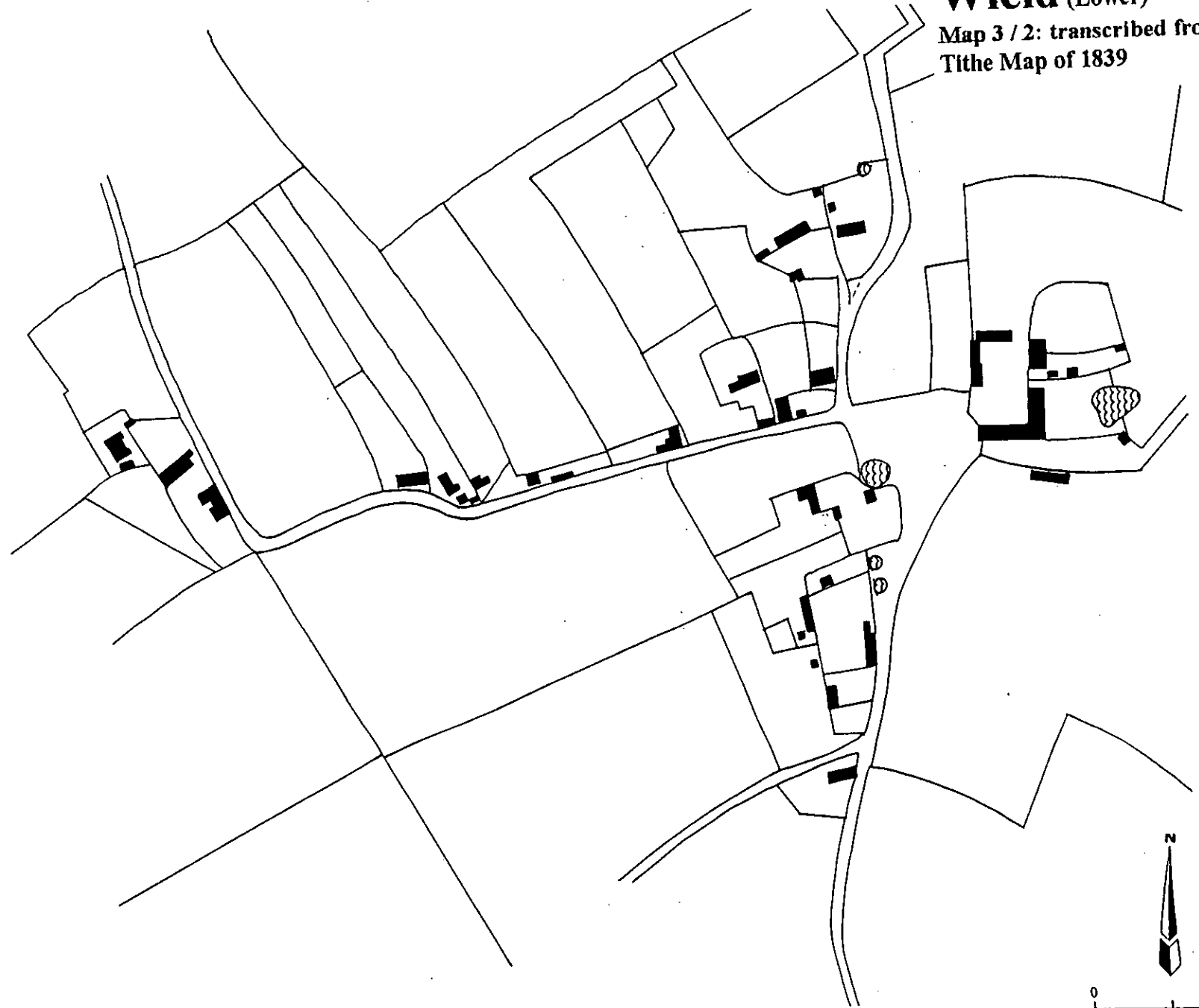


**Wield (Upper)**  
Map 3 / 1 transcribed from the  
Tithe Map of 1839



# Wield (Lower)

Map 3 / 2: transcribed from the  
Tithe Map of 1839





463400 463500 463600 463700 463800 463900

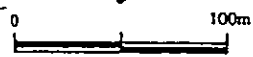
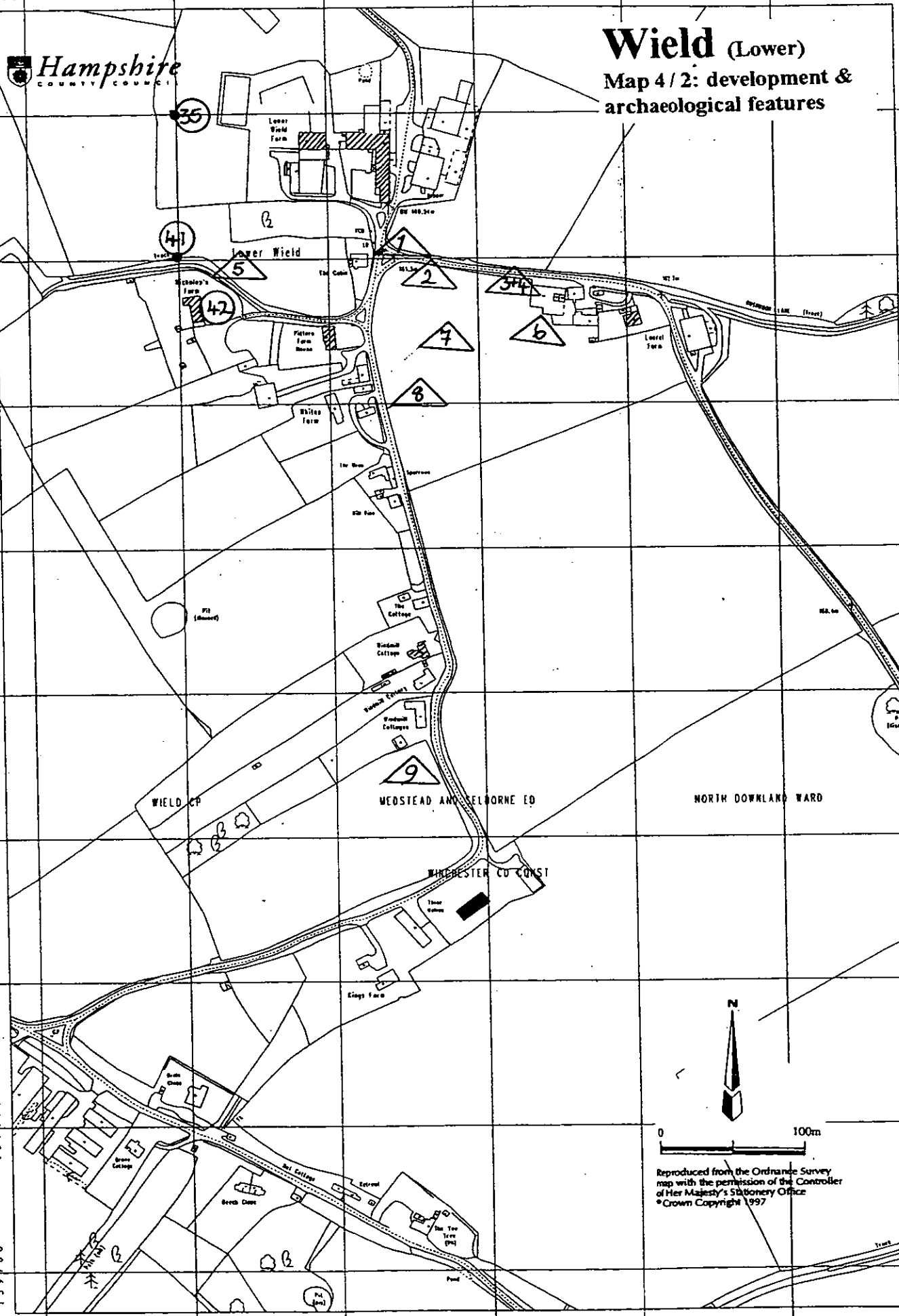


# Wield (Lower)

Map 4 / 2: development & archaeological features

140500  
140400  
140300  
140200  
140100  
140000  
139900  
139800  
139700

140500  
140400  
140300  
140200  
140100  
140000  
139900  
139800  
139700



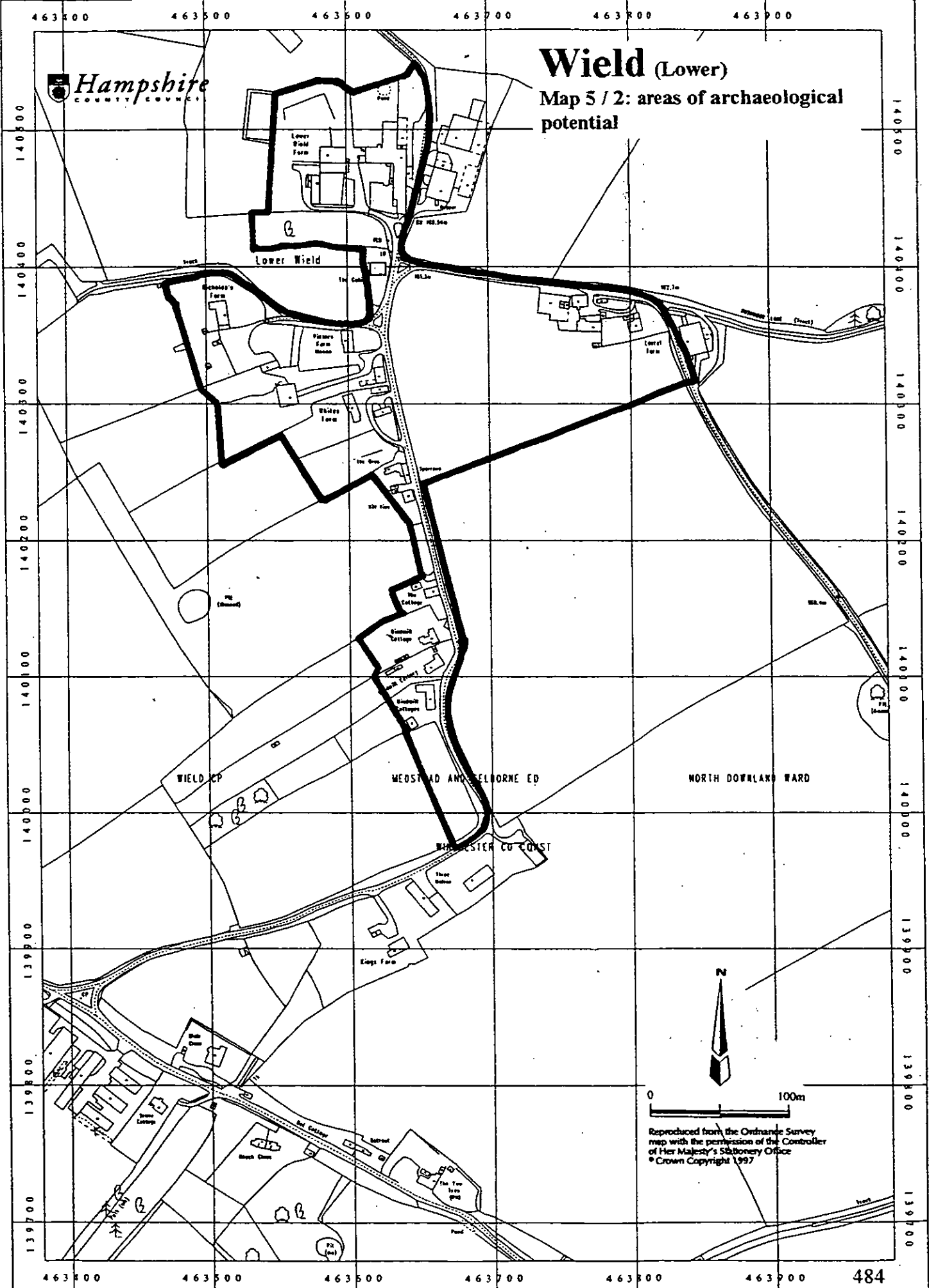
Reproduced from the Ordnance Survey map with the permission of the Controller of Her Majesty's Stationery Office  
© Crown Copyright 1997

463400 463500 463600 463700 463800 463900



# Wield (Lower)

Map 5 / 2: areas of archaeological potential



Reproduced from the Ordnance Survey map with the permission of the Controller of Her Majesty's Stationery Office  
© Crown Copyright 1997



# Upper Wield

Conjectural Medieval layout  
of greens based on 1839  
Tithe Map

