

Hartley Mauditt

1.0 PARISH	Worldham, formerly Hartley Mauditt
2.0 HUNDRED	Alton
3.0 NGR	474300 136100
4.0 GEOLOGY	Upper Greensand

5.0 SITE CONTEXT (Map 2)

Hartley Mauditt was formerly the central place of its own parish. It is now classed as a deserted medieval settlement (DMS), the principal earthworks of which can be seen in the fields immediately north-west and south of the surviving parish church. The other principal feature of the settlement is a large spring-fed lake that is situated to the east of the church and is separated from it by a narrow road, the former route to Selborne Priory and onwards to Selborne. The lake supplies a stream that passes through settlement earthworks south of the church. The parish has been absorbed into Worldham CP and West Worldham is 1km north.

6.0 PLAN TYPE & DESCRIPTION (Maps 3, 4 & 5)

Church & manor house + associated settlement

6.1 Church & manor house Hartley Mauditt church is the only surviving building of the Medieval settlement. At 148.32 AOD it stands above ground to the west that drops to 134.0 AOD within 0.5km. The former manor house is well documented. Its traditional site is now occupied by a copse within 30m west of the church (Paragraph 11.0 No. 1). A new manor house was built in the early C18. It is thought to have been demolished c. 1798.

6.2.1 Associated settlement The presence of other settlement buildings north, west and south of the church is attested by the numerous earthworks. Some of these are house platforms. It is not possible to discern the layout of the settlement from the evidence of the earthworks. The selective tax returns listed in Paragraphs 14.2 and 14.4 suggest that taxable households in Hartley Mauditt did not rise above the low twenties. This does not mean that all of the houses were clustered around the church. Map 6 shows the distribution of settlement within the parish of Hartley Mauditt in 1840. Some of the taxable properties would have been at Candovers (the other manor in Hartley Mauditt), Jeffries Farm (now represented by Jeffries Cottages) and elsewhere.

6.2.2 According to Meirion-Jones (1970: 116) the number of houses in Hartley Mauditt (parish) declined from 23 in 1665 to 21 in 1673 and to 16 in 1674. This is attributed to a C16 manorial policy of increasing demesne land as a part of the process of emparking (Meirion-Jones, 1970: 118 & 120).

NB For an alternative hypothesis see the survey for Selborne, Paragraph 6.2.2

6.3 Site visit condition: Strong, low sun (9.3.99)

Hartley Mauditt

7.0 ARCHAEOLOGICAL POTENTIAL (Map 5)

7.1 *AsAP*

This area is much the same as that defined by the SAM (Paragraph 10.3). It includes the church, all of the visible earthworks and the pond.

7.2 *AsHAP*

An area that includes the parish church and the areas where there are visible earthworks north, west and south of the church in accordance with the SAM.

8.0 CHURCH & CHURCHYARD

St Leonard

- C11? chancel arch
- C12 nave with Norman windows
- C12 south doorway (transitional Norman)
- C13 chancel or later
- C15 font
- C19 north vestry
- C19 windows in nave & east end

9.0 BUILDINGS (Map 4)

PRN	Details	Dates	Grade
*	Long Candovers & 3 Candovers	C16, 17, 18	II
*	Parish Church of St Leonard	C12	II*
*	Jeffries Cottage	C17, 18, 20	II
*	Hartley Mauditt House (former Rectory)	c. 1800	II
*	Long Candovers: barn at	early C18, 19	II
*	Hartley Park Farmhouse, Selborne Road	C18	II

NB See also listings under West Worldham

10.0 SMR DATA SW 473500 135500, 474800 137000 NE (Map 4)

SU 73 NW	No.		
	14	473770 136720	Bronze Age. Bowl Barrow c. 23m in diameter, 1.8m high. Littlewood Copse.
	20	474290 136100	Medieval. Parish Church (see 8.0).
	38A	474230 136200	Medieval. Earthworks of deserted medieval settlement (DMS).
	38B	474230 136200	Medieval. Building debris associated with 38A.
	39	474000 136000	Roman. Coin find. 30 coins include 9 x Claudius II, 20 x Gallienus and 1 x Valerian. Probably a small hoard.
	42	474200 137000	Post-Medieval. Oast house.

Hartley Mauditt

57	474190 136960	Medieval. C13 pottery finds.
184	473890 136930	Undated. Linear bank. HC AP ref.: run 18e266.
203	474200 136860	Medieval. Late medieval timber-framed hall, extended C17.

10.2 Hampshire Romano-British Settlements survey

Hants No.	NGR	Parish	NAR / NMR Nos
None listed.			

10.3 Scheduled Ancient Monuments (SAMs)

SAM No.	NGR	Site
262	474170 136100	Hartley Mauditt Deserted Medieval Settlement (Worldham CP)
	474310 136270	

11.0 ADDITIONAL SITES / FEATURES (Map 4)

1	474240 136100	Traditional site of Hartley Mauditt manor house. However, a C18 manor house was situated 70m south-west of the church where the foundations can still be seen (Maps 4 & 5). It is reputed to have been demolished in 1798.
---	---------------	--

12.0 CARTOGRAPHIC SOURCES

- Tithe Map 21M65/F7/107/2 (* / 1842)
- GSGB 300 Alresford
- OS 1: 2500 SW 473525 135865, NE 474425 136465
- OS 1: 25000 Pathfinder 1244 (SU 63 / 73), Alton & Four Marks

13.0 BIBLIOGRAPHY

- HTS 6: 327-331 (included under Worldham)
- Meirion-Jones GI 1970 Dogmersfield and Hartley Mauditt: Two Deserted Villages. *Hampshire Field Club* 26 (for 1969): 111-127.
- VCH 2: 508-11

14.0 PRIMARY HISTORIC SOURCES

14.1 Domesday Book

27,1 Edward of Salisbury holds *Bramshott* from the King. 2 free men held it from King Edward in freehold. Then and now it answered for 6 hides. Land for 5 ploughs. In lordship 1; 10 villagers and 3 smallholders with 4 ploughs. 2 mills at 100d; meadow, 2 acres; woodland at 4 pigs. Value before 1066, later and now 100s. William Mauduit claims 1 hide of this land which lay in Hartley (Mauditt). The Hundred and Shire testify to this.

14.2 Subsidy Rolls

1334		£1.11.6	
1524	1st survey	£1.18.8	(18 taxpayers)

2nd survey £1.13.4 (20 taxpayers)

14.3 Manorial Documents

Hartley; Candovers

14.4 Hearth Tax

1665 43 hearths chargeable (14 houses)
 10 hearths listed as not chargeable (9 houses). Total: 23 houses.

NB It is thought that Hartley Mauditt be might listed under Holdshot Hundred also:
 31 hearths chargeable (10 houses)
 0 hearths listed as not chargeable. (Total: 10 houses).

There is no similarity in the two lists of named taxpayers and it seems probable that the second entry (*ie* under Holdshot Hundred) is an error.

15.0 PLACE NAME

1086 *Herlege*; 1212 *Hertlie*; 1242 *Hurtlye*. OE *heorotleah* ‘hart wood / clearing’.
 William Maudoit (‘badly brought up’) held land here as early as 1086 (14.1).

16.0 PHOTOGRAPHS**17.0 OTHER PROJECT ELEMENTS****17.1 Pre-Conquest Charters**

None.

17.2 Other parish settlements include:

<i>Name</i>	<i>MSP no.</i>	<i>Map ref.</i>	<i>First recorded</i>
Candovers Farm	2609	475300 185800	1369

NB See also West Worldham & West Worldham

17.3 Enclosures*Parliamentary:*

<i>NEP no.</i>	<i>Act</i>	<i>Order</i>	<i>Award</i>	<i>Details</i>
None.				

Formal Agreements:

<i>NEP no.</i>	<i>Agreement</i>	<i>Award</i>	<i>Details</i>
None.			

17.4 Commons & Greens (residual)

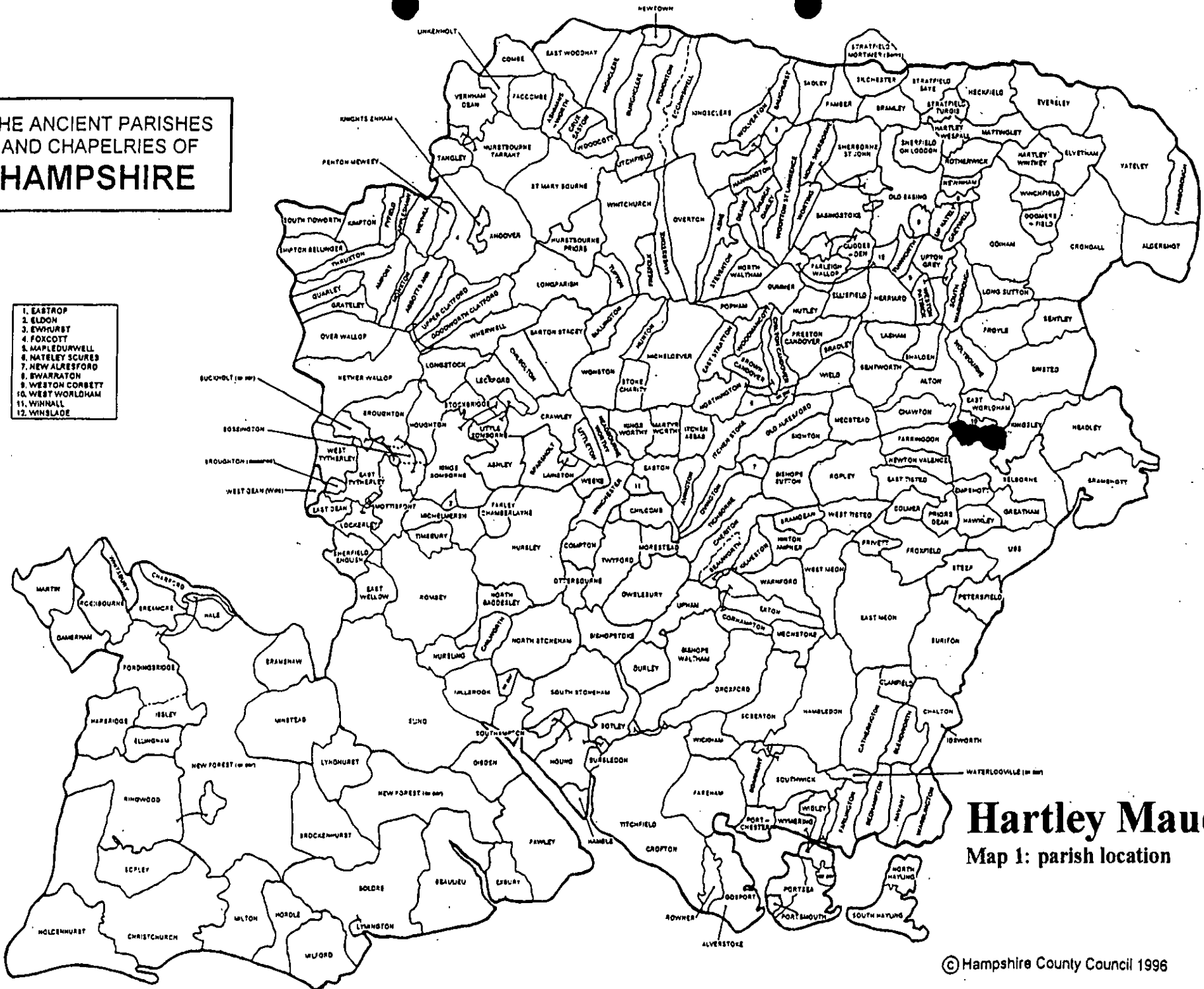
Hartley Park occupies a substantial area of this former parish.

18.0 ILLUSTRATIONS

- 1 Map 1: Parish location (not to scale)
- 2 Map 2: Settlement location at 1: 25000
- 3 Map 3: *c.* 1842 Tithe Map transcribed at 1: 2500 reduced to 71%
- 4 Map 4: Development & archaeological features at 1: 2500 reduced to 71%
- 5 Map 5: Areas of archaeological potential at 1: 2500 reduced to 71%
- 6 Map 6: Hartley Mauditt: Field Boundaries & Settlement 1840 (Meirion-Jones, 1970: 123)

**THE ANCIENT PARISHES
AND CHAPELRIES OF
HAMPSHIRE**

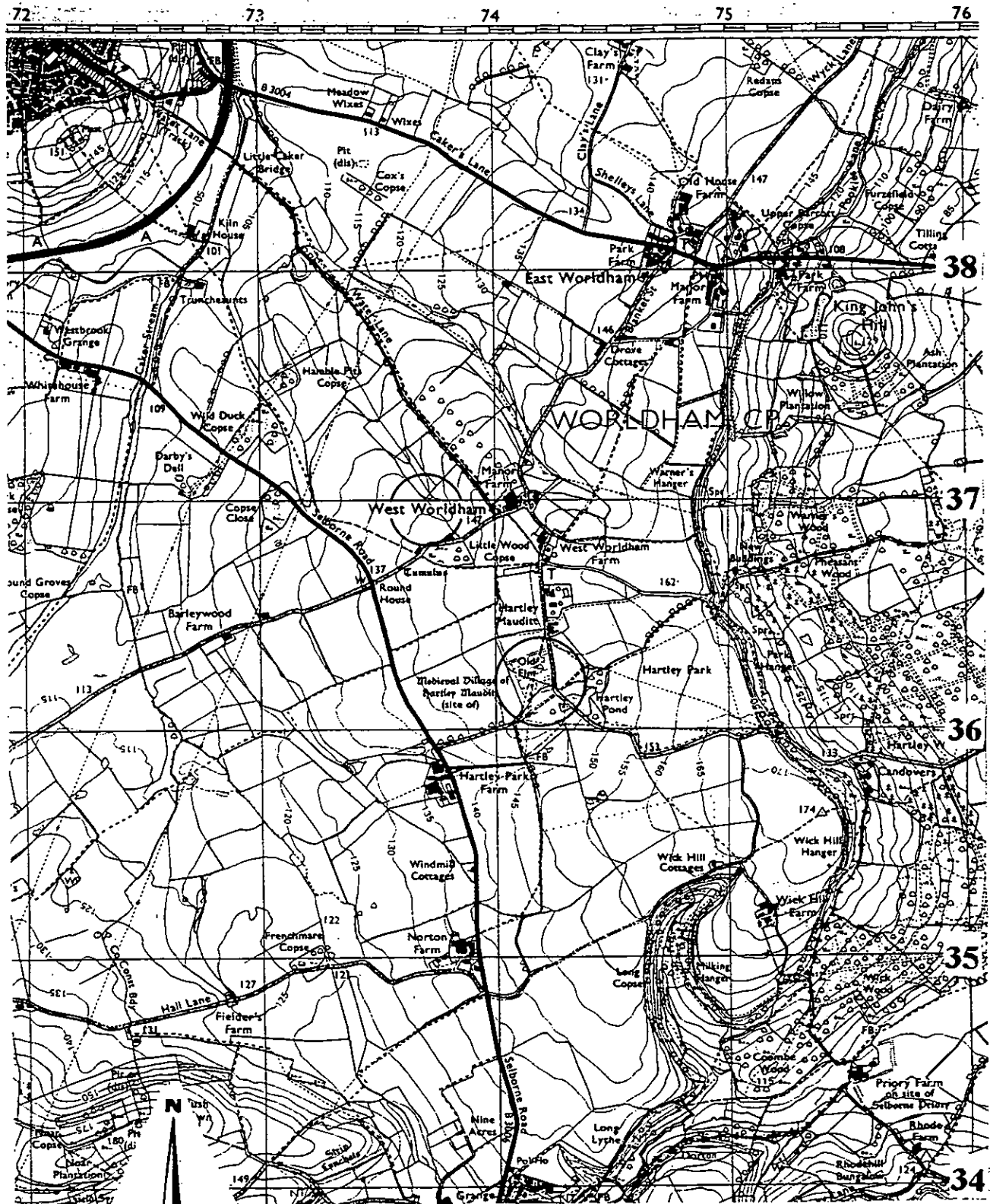
1. EASTROP
2. ELDMO
3. EWHURST
4. FOXCOTT
5. MAPLEDURWELL
6. NATELEY SCURES
7. NEW ALRESFORD
8. BARRATON
9. WESTON CORBETT
10. WEST WORLHAM
11. WINNALL
12. WINSLADE



Hartley Mauditt
Map 1: parish location

Hartley Mauditt

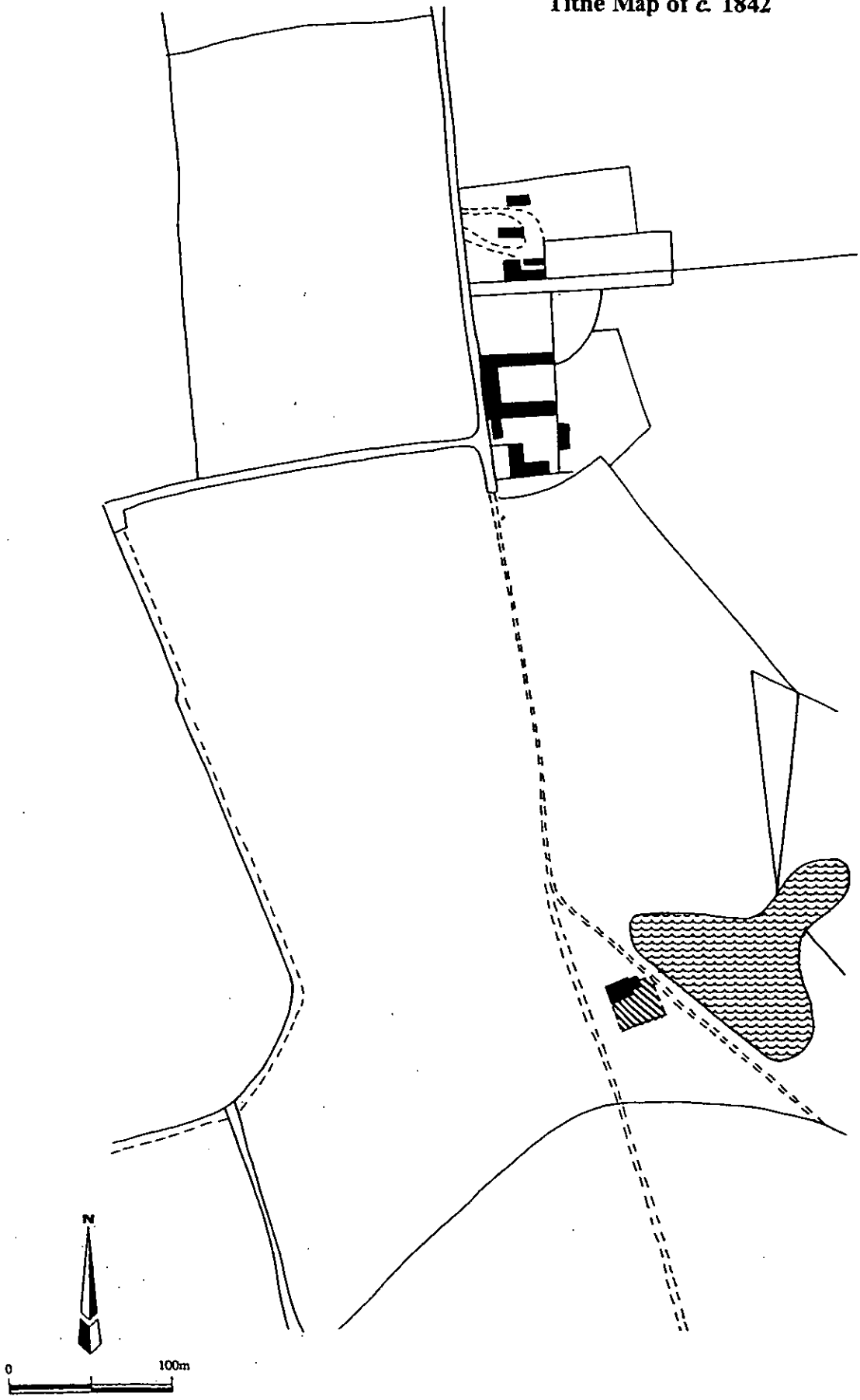
Map 2: general location

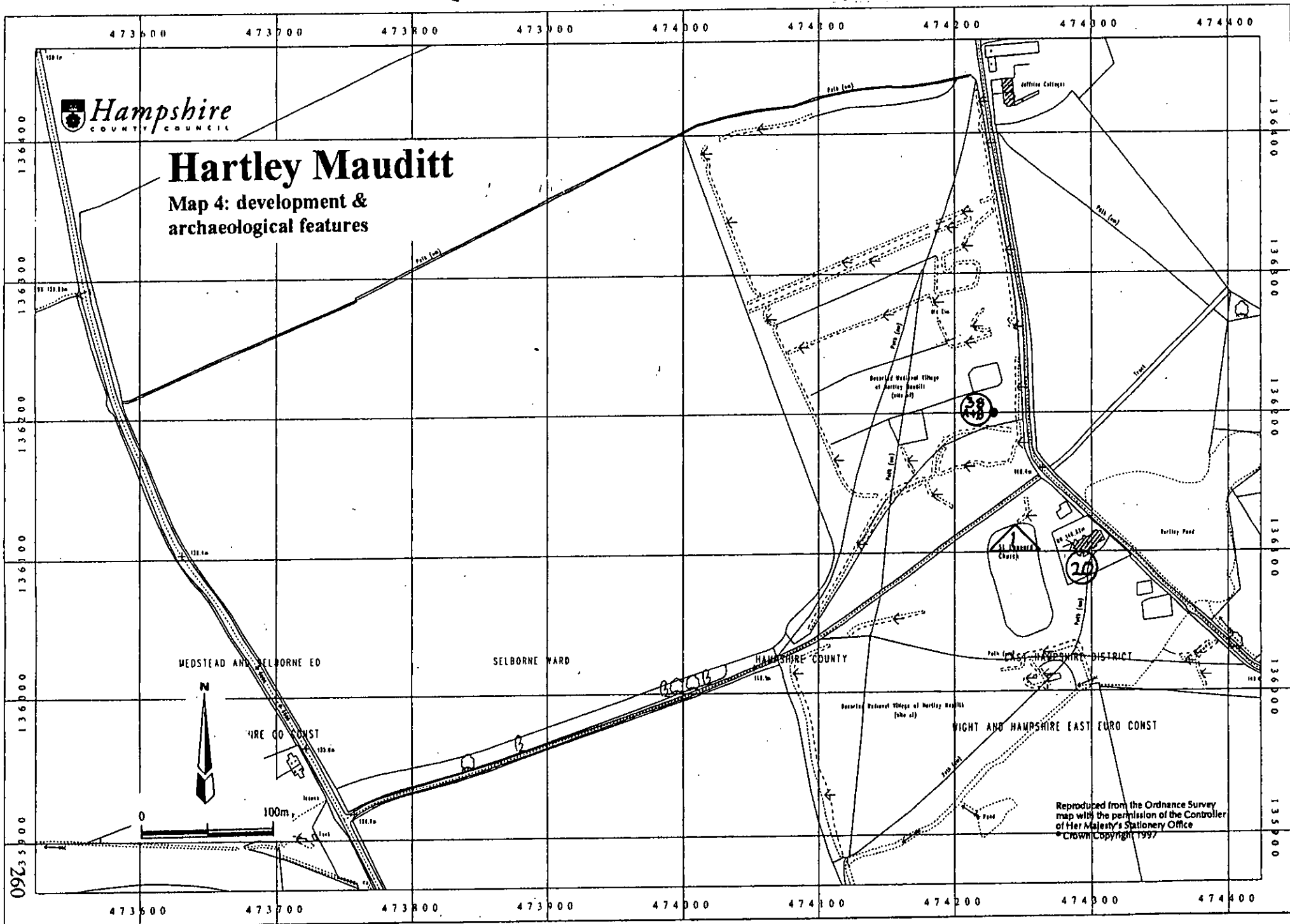


Reproduced from the Ordnance Survey map with the permission of the Controller of Her Majesty's Stationery Office
 © Crown Copyright

Hartley Mauditt

Map 3: transcribed from the
Tithe Map of c. 1842





Hartley Mauditt

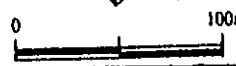
Map 4: development & archaeological features

MEDSTEAD AND SELBORNE ED

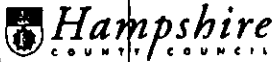
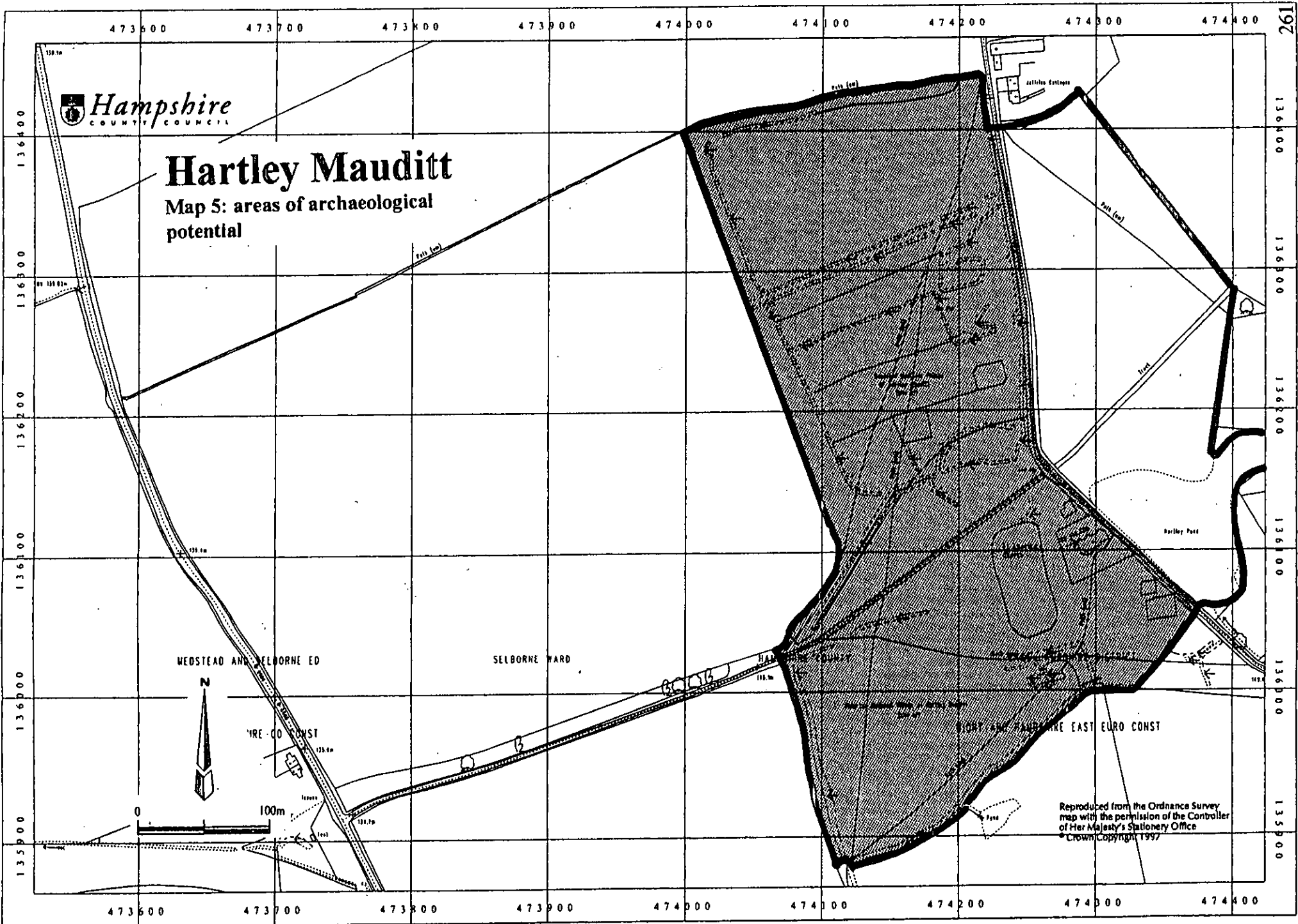
SELBORNE WARD

HAMPSHIRE COUNTY

WIGHT AND HAMPSHIRE EAST EURO CONST



Reproduced from the Ordnance Survey map with the permission of the Controller of Her Majesty's Stationery Office
© Crown Copyright 1997



Hartley Mauditt

Map 5: areas of archaeological potential

MEDSTEAD AND SELBORNE ED

SELBORNE WARD

YRE CO CONST

HARTLEY AND SELBORNE EAST EURO CONST

Reproduced from the Ordnance Survey map with the permission of the Controller of Her Majesty's Stationery Office
 © Crown Copyright 1997

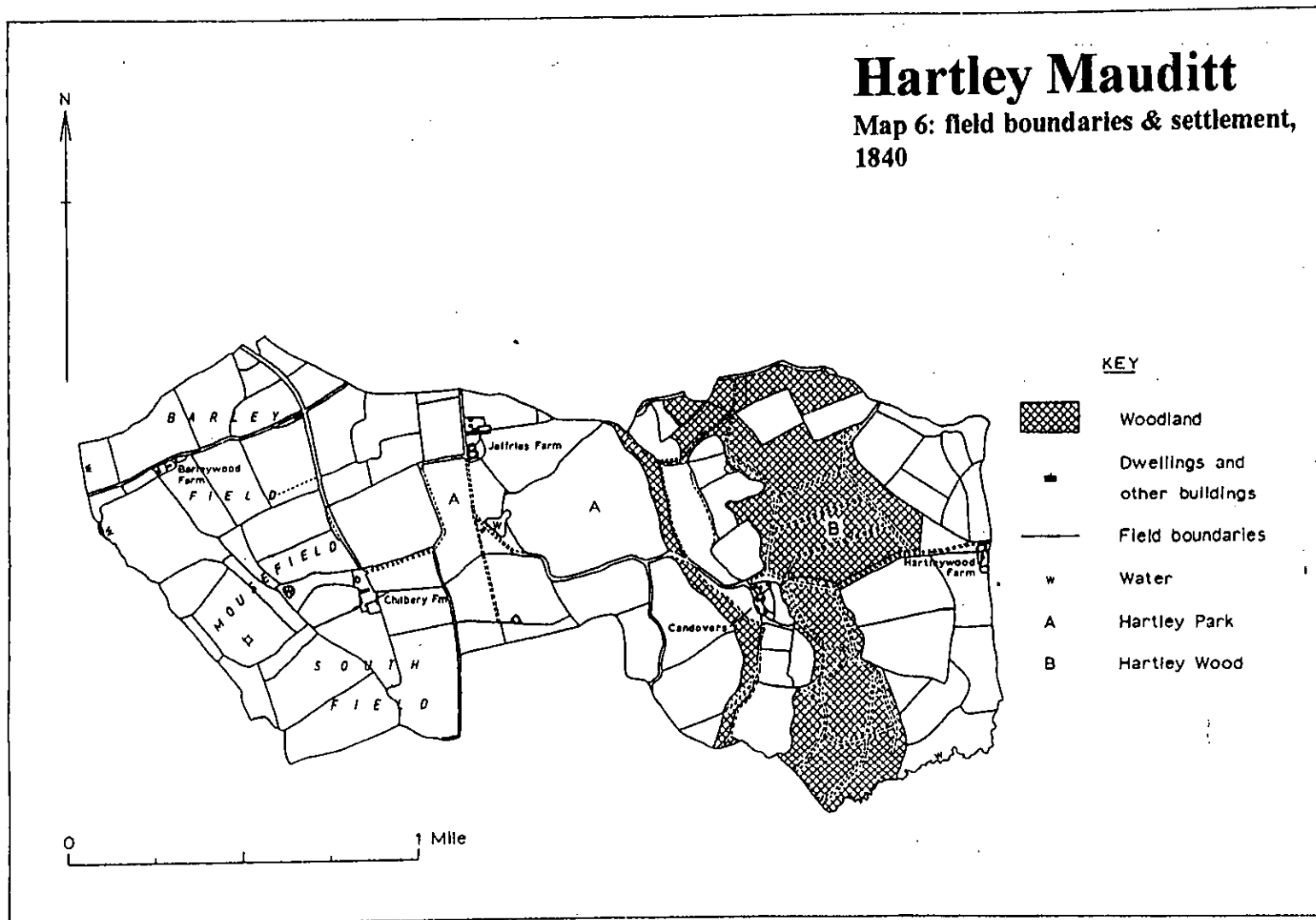


Fig. 43. Hartley Mauditt – Field Boundaries and Settlement, 1840.