

- 1.0 PARISH** Colemore and Priors Dean (the two parishes were separate until 1932)
- 2.0 HUNDRED** Barton Stacey
- 3.0 NGR** 470600/30700;
- 4.0 GEOLOGY** Colemore: Clay-with-Flints (tertiary debris);

5.0 SITE CONTEXT (Map 2)

Colemore is situated on a north-facing spur at c. 165m AOD. It is a relatively small settlement comprising a church, Colemore House and Manor Farm with five outlying buildings c. 200m south-west of the church. One winding lane makes its way through Colemore; there are other routes but these are bridleways and footpaths one of which connects two adopted lanes to form a route to Priors Dean (2.5km SE).

6.0 PLAN TYPE & DESCRIPTION (Maps 3, 4 & 5)

Church & manor house

6.1 The parish church and Manor Farm are divided by an un-named lane. Colemore House, formerly the rectory (C18) stands to the east of the church. Manor Farm is C17 but possibly contains the fabric of an older building, probably the former manor house. Immediately to the south of the farm is a field that contains a number of earthworks. One of these is marked as a hollow-way by Olliver & Collins (1976: 86; Map 6) though it could be a boundary. A site visit confirmed the presence of at least one house platform. The Tithe Map of c. 1843 shows no buildings in this area and so the platforms represent dwellings that are earlier than this. There is an extensive field system in the field south-west of, and adjacent to the churchyard. This field has multiple lynchets / boundaries but no obvious house platforms. It is crossed by a footpath to a group of cottages around a junction. There are earthworks here too, and associated ponds (Paragraph 11.0 Nos 1, 2, 3 and 7).

6.1.1 The extent and nature of earthworks at Colemore suggests that it was once a larger settlement but nevertheless a relatively small one.

6.2 *Site visit condition:* Periods of good strong sun intermixed with heavy showers of hail with snow flurries (13.4.99)

7.0 ARCHAEOLOGICAL POTENTIAL (Maps 5 & 6)

Colemore is a settlement with a number of clearly defined earthworks and it is desirable that a detailed survey should be carried out.

7.1 *AsAP*

A large area that includes the church, Manor Farm, identified house platforms, field systems, and the dwellings around the road junction c. 200m south-west of the church. These indicate a larger settlement than that which is extant today.

continued.....

7.2 AsHAP

The entire area described in Paragraph 6.1 with the exception of the area around the road junction 200m south-west of the church.

8.0 CHURCH & CHURCHYARD

St Peter ad Vincula, Colemore

- C11 church of cruciform plan; nave & chancel are one unit north transept: C11 window in east wall; C12 window in north wall; C12 doorway in west wall;
- 1670 south transept removed;
- C19 bell-turret with spire;
- 1874 chancel rebuilt;
- C12 table type font of Purbeck Marble.

NB The church was declared redundant in 1972 after which extensive repairs were undertaken.

9.0 BUILDINGS (Map 4)

PRN	Details	Dates	Grade
*	Slade Farmhouse	C17, 18	II
*	Parish Church of St Peter <i>ad Vincula</i> (Church of St Peter)	C11, 12, 17, 1874, 1975	II*
*	Manor Farmhouse	C17, 19	II
*	Colemore House (former Rectory)	C18, 19, 20	II

10.0 SMR DATA SW 470000 130000, NE 471000 131000 (Map 4)

SU 73 SW	No.		
	6	470600 130760	Medieval. Parish Church (see 8.0).
	23	470550 130190	Palaeolithic. Flint implement.
**	24	470500 130630	Medieval. Deserted settlement (DMS but more correctly shrunken IH/99) near the church and crossroads; south of Manor Farm; meadow west of the church.
	31A	470000 130200	Undated. Chipped stone scatter.
	31B	470000 130200	Undated. Burnt flint fragment.
	32A	470170 130290	Medieval. Pottery find.
	32C	470170 130290	Undated. Burnt flint finds.
	36	470420 130360	Romano-British. Pottery find; no details.
	37A	470420 130360	Undated. Burnt flint finds.
	37B	470420 130360	Undated. Chipped stone scatter.
	38	470420 130360	Medieval / Post-Medieval. Pottery finds.
	40A	470690 130390	Prehistoric. Burnt flint scatter.
	40B	470690 130390	Undated. Chipped stone find.
	43A	470970 130370	Prehistoric. Burnt flint scatter.
	43B	470970 130370	Prehistoric. Burnt flint fragment.
	111	470000 130500	Undated. Linear feature. RCHM(E) AP

refs: SU7030/5/2132/1243-8.

10.2 Hampshire Romano-British Settlements survey

<i>Hants No.</i>	<i>NGR</i>	<i>Parish</i>	<i>NAR / NMR Nos</i>
None listed.			

10.3 Scheduled Ancient Monuments (SAMs)

<i>SAM No.</i>	<i>NGR</i>	<i>Site</i>
558	470700 130600	DMS at Colemore
	470500 130700	

11.0 ADDITIONAL SITES / FEATURES (Map 4)

1	470290 130730	Earthwork
2	470240 130680	Former site of pond
3	470300 130560	Earthworks and probable house platforms in this field
4	470500 130650	Field system
5	470560 130620	House platform
6	470650 130615	Linear earthworks
7	470320 130615	Site of house and curtilage present on the Tithe Map of c. 1843

12.0 CARTOGRAPHIC SOURCES

- Tithe Map 21M65/F7/192/2 (* / 1843)
- GSGB 300 Alresford
- OS 1: 2500 SW 470200 130400, NE 471000 130900
- OS 1: 25000 *Colemore*: Pathfinder 1244 (SU 63/73), Alton & Four Marks.
Priors Dean: Pathfinder 1265 (SU 62/72), Petersfield & the
Meon Valley.

13.0 BIBLIOGRAPHY

- HTS 6: 97-102
- Hervey T 1896 *A Short History of Colmer and Priors Dean* (abridged version).
Colemore, private publication.
- Oliver J & Collins FB 1976 *Colemore & Priors Dean Proceedings of the
Hampshire Field Club & Archaeological Society* **32**: 83-92
- VCH 3: 423-5.

14.0 PRIMARY HISTORIC SOURCES**14.1 Domesday Book**

57, 2 (Land of Humphrey the Chamberlain; Barton Hundred). Humphrey also holds 1 hide in *Colemore*. Aelfric held it from Bondi; he could not go whither he would. Then it answered for 1 hide; now for ½ hide. Land for 2 ploughs. In lordship 1 plough; 2 villagers and 4 smallholders with 1 plough. 4 slaves. Value before 1066, 40s; later and now 30s; however it pays 40s.

14.2 Subsidy Rolls

Colemore:

1334		££2.0.6	
1524	1st survey	Not listed	
	2nd survey	4.10.0	(11 taxpayers)

14.3 Manorial Documents

- Manors recorded: Colemore; Colemore Farm
- Granted to Southwick Priory in 1198

14.4 Hearth Tax 1665*Colemore*

34 hearths chargeable (10 houses)

1 hearth not chargeable (1 house). Total: 11 houses.

15.0 PLACE NAME**15.1 Colemore**

1086 onwards *Colemere*; 1196 *Culemere*. OE *cola mere* '(the) Cool Pond'. Coates (1989: 58) suggests a dew pond, the waters of which are, by tradition, always cold. However, the name might have been transferred from another location (IH).

16.0 PHOTOGRAPHS**17.0 OTHER PROJECT ELEMENTS****17.1 Pre-Conquest Charters**

None.

17.2 Other parish settlements include:

<i>Name</i>	<i>MSP No.</i>	<i>Map ref.</i>	<i>First recorded</i>
Bakers Farm	652		1476
Becksteddle Farm	653	469500 130200	1219
Doscombe	655		1219
Field Farm	656	471100 129800	1219
Fordes Farm	657		1219
Goleigh Farm	658	473400 131200	1219
Rumpleberry Wood	66?		1219
Slade Farm	661	471700 130300	1219

NB It is not certain whether some of these places belong in Colemore or Priors Dean. For the purpose of this survey they are listed under both.

17.3 Enclosures

Parliamentary:

<i>NEP no.</i>	<i>Act</i>	<i>Order</i>	<i>Award</i>	<i>Details</i>
14034	1808		None	Colemore Common.

Formal Agreements:

<i>NRP no.</i>	<i>Agreement</i>	<i>Award</i>	<i>Details</i>
			None.

17.4 Commons & Greens (residual)

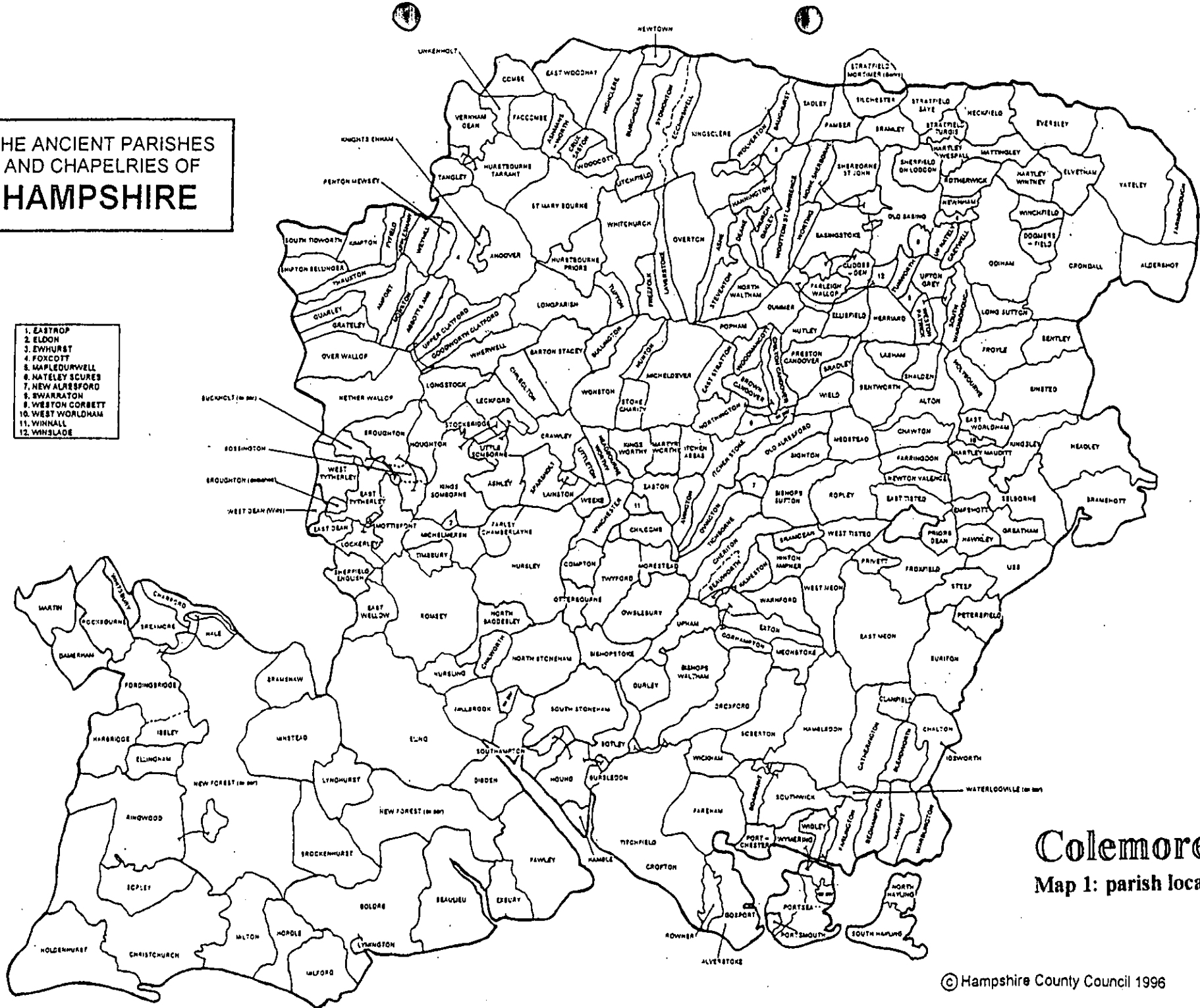
None listed

18.0 ILLUSTRATIONS

- 1 Map 1: Parish location (not to scale)
- 2 Map 2: Settlement location at 1: 2500
- 3 Map 3: *c.* 1843 Tithe Map transcribed at 1: 2500 reduced to 71%
- 4 Map 4: Development & archaeological features at 1: 2500 reduced to 71%
- 5 Map 5: Areas of archaeological potential at 1: 2500 reduced to 71%
- 6 Map 6: Archaeological site in Colemore (Oliver & Collins, 1976: 86)

THE ANCIENT PARISHES AND CHAPELRIES OF HAMPSHIRE

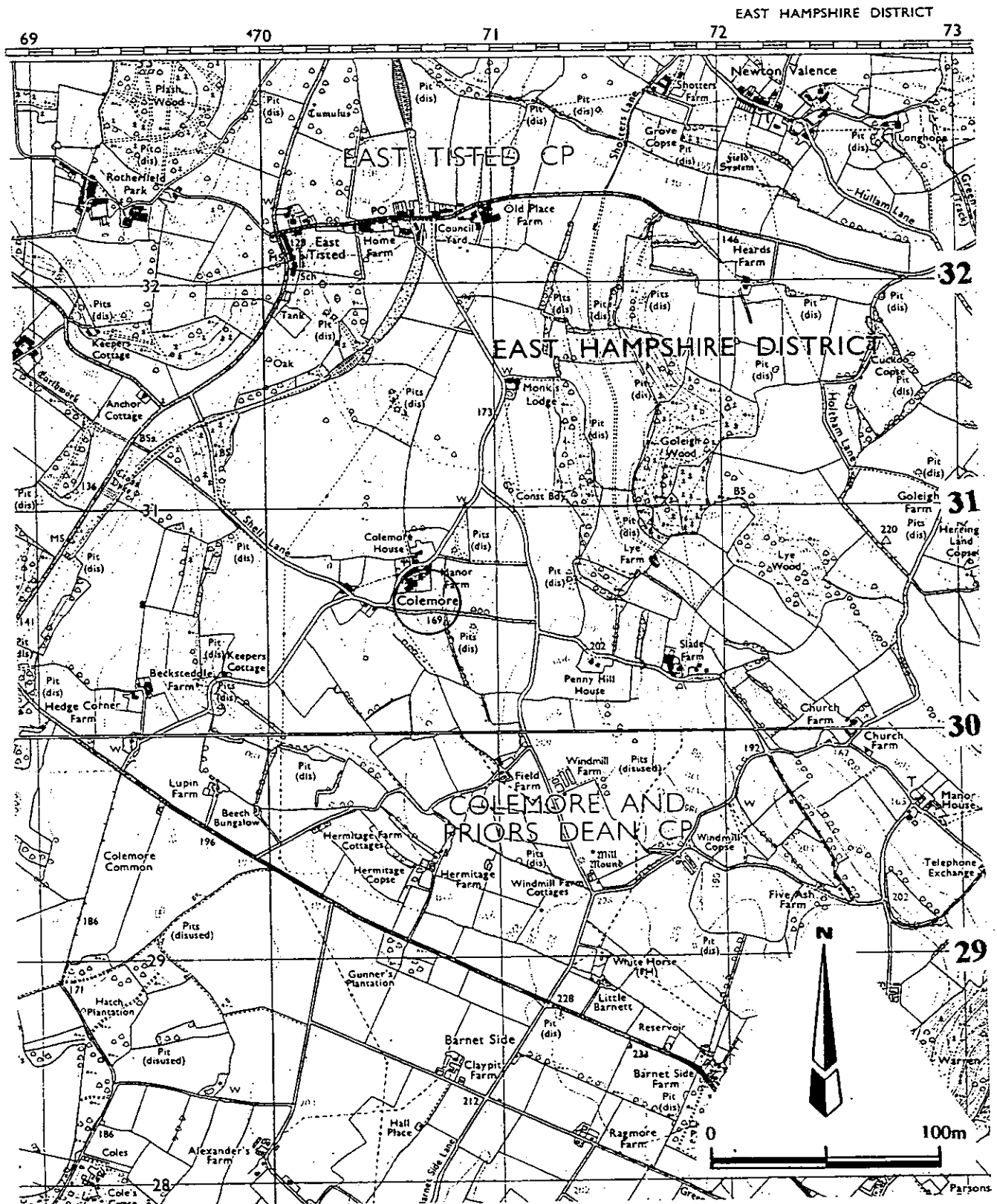
1. EASTROP
2. ELDOH
3. EWHURST
4. FOXCOTT
5. MAPLEDURWELL
6. NATELEY SCURES
7. NEW ALRESFORD
8. SWARRATON
9. WEST CORBETT
10. WEST WOLDHAM
11. WINNALL
12. WINSLADE



Colemore
Map 1: parish location

Colemore

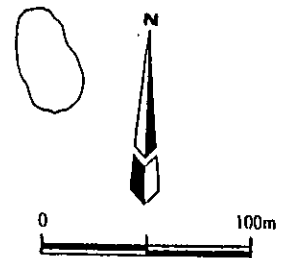
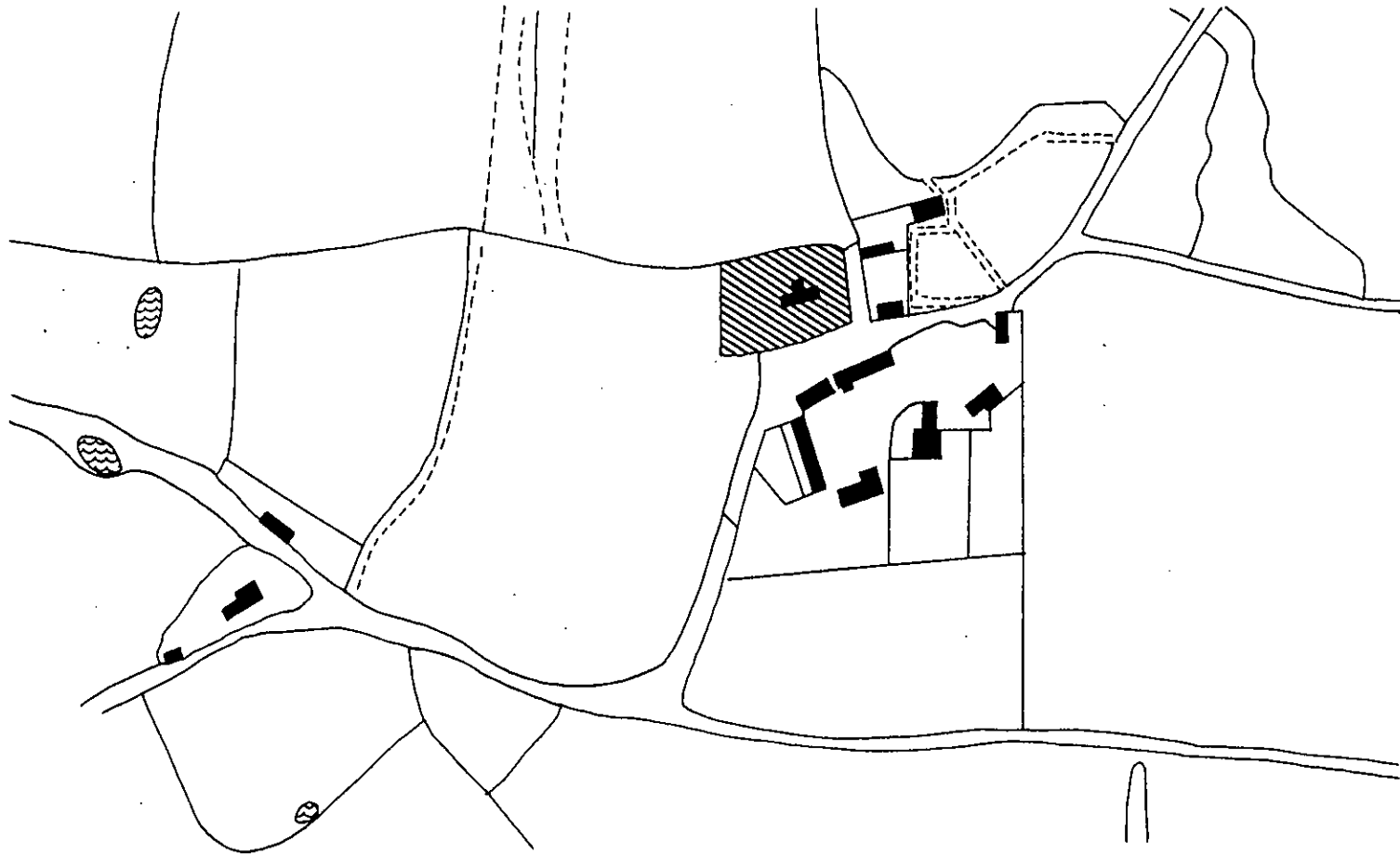
Map 2: general location



Reproduced from the Ordnance Survey map with the permission of the Controller of Her Majesty's Stationery Office
© Crown Copyright

Colemore

Map 3: transcribed from the
Tithe Map of c. 1843



Colemore

archaeological features

(Oliver & Collins, 1976: 86)

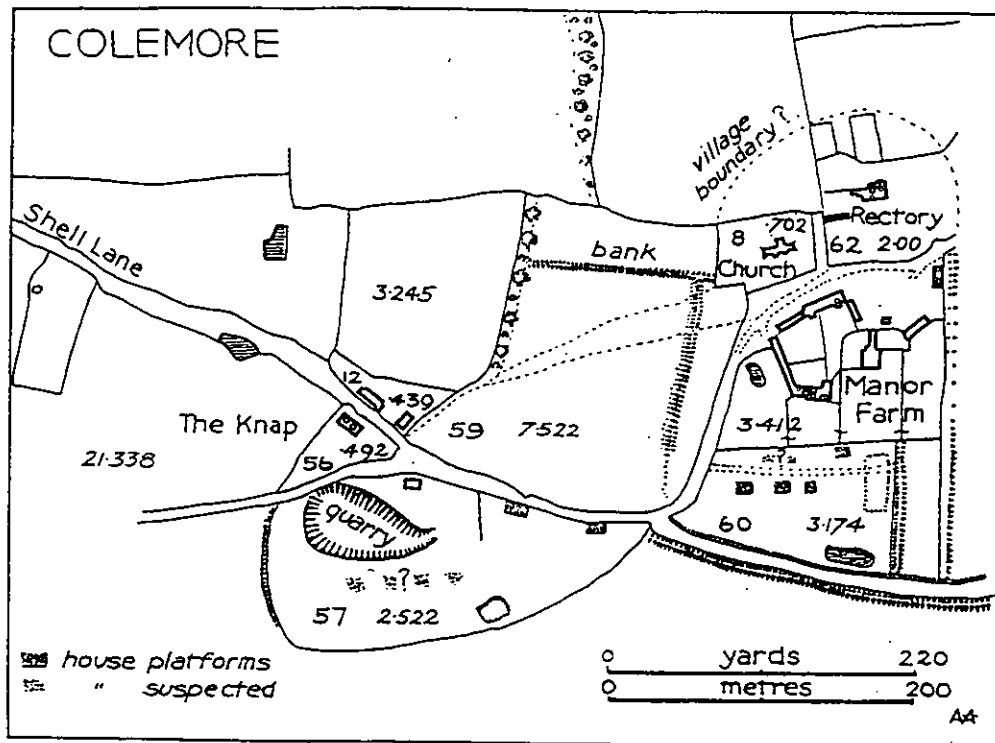


Fig. 2. Based on the OS25' Plan (Crown Copyright reserved).