

- 1.0 PARISH** Bramshill (formerly part of Eversley)
- 2.0 HUNDRED** Holdshot / (Odiham)
- 3.0 NGR** SU 474800 161200
- 4.0 GEOLOGY** *Little Bramshill:* Interface of Lower Bagshot (sand) to the west, Bracklesham Beds and Plateau Gravel (east).  
*Great Bramshill:* Lower Bagshot (sand)

## 5.0 SITE CONTEXT

**5.1** Bramshill parish is effectively divided into two parts by the A327. North of this road, and contiguous with it, is the extensive Bramshill Plantation around which is an arc of isolated farmsteads. Bramshill House (c. 85m AOD), within its grounds, and bounded to the east by a medieval park pale, occupies much of the southern part of the parish. It represents the erstwhile manor of Little Bramshill. The House is now a police college.

**5.2** The largest residential area is 1.6km north-west of Bramshill House. It hugs the south side of the A327; today it is known as Bramshill but in the past as Bramshill Row or Great Bramshill. Most of the houses stand back from the road, amongst trees, close to 65m AOD. There is a cross-roads at the western end of the settlement, and south from here runs Copes Lane which has a small *council house* estate and other C20 houses on the west side. At the east end of Bramshill, Plough Lane leads to Moor Place Farm (c. 75m AOD).

## 6.0 PLAN TYPE & DESCRIPTION

### Manor houses (2) + common edge settlement

At the time of Domesday Bramshill was represented by two manors (VCH 4: 35). Great Bramshill (6.1) which consists of two distinct units; manor house / farmstead (6.1.1) and Bramshill Row (6.1.2). The second manor, Little Bramshill (6.2), was based at, or close to, the present Bramshill House.

### 6.1 *Great Bramshill*

**6.1.1 *Manor house*** Moor place Farm, at the eastern end of the settlement, is the site of the manor house and possibly the original focus of Great Bramshill.

**6.1.2 *Common edge*** Bailey's (Holyoak) Farm lies at the centre of Bramshill Row and may be regarded as one of the group of isolated farms which encircle Bramshill Plantation (common). However, unlike the other farms in this group, Bailey's Farm lies close to the east-west road through the parish (A327) and this road attracted a roughly linear spread of crofts / tofts along its southern margin. Most of these plots are set back from the road by as much as 50m and it is very probable that the open roadside space thus created was held in common. A plot adjacent to Bailey's Farm (north-west) is the site of Bramshill church, but this is a C20 scout hut type building, seemingly disused. There was a building within this plot when the Tithe Map was drawn-up, the position of

which might be indicated by minor earthworks immediately to the rear of the church. A western extension of Bramshill Row is represented on the Tithe Map as an irregular straggle of crofts / tofts along Copes Lane (south) and Ford Lane (north). In fact, the northern property boundary of Bramshill Row seemingly extended westwards across Copes Lane (c. 1842) thereby including the Copes Lane properties within the Row (Map). However, there is one substantial difference. The properties east of Copes Lane (*ie* along the A327) face north; those along Copes Lane face east. This suggests that the Copes Lane properties are a later agglomeration.

**6.2 Little Bramshill** Bramshill House contains some medieval fabric (VCH 4: 37) and it is probable that it was originally the site of a manor house. The House stands within a medieval park and the park pale is still visible along a stretch from 476200 160550 to 476500 160100 and is traceable elsewhere. A rectilinear earthwork at 475200 161400, might be a moated site associated with the deer park. The process of emparkment and landscaping was responsible for the removal / relocation of settlement during C16-C18 (Hughes, 1995: 208). It is possible that replacement accommodation was provided at Great Bramshill (6.1).

**6.3 Site visit conditions:** strong, low sun often obscured by dense tree cover; dry.

## **7.0 ARCHAEOLOGICAL POTENTIAL**

### **7.1 AAP**

**7.1.1 Great Bramshill (Bramshill Row).** An inclusive area from Paynes Cottage eastwards along the southern margin of the A327 up to the junction with Copes Lane and Ford Lane from which point, the AAP extends for c. 200m northwards along Ford Lane and c. 250m south-westwards along Copes Lane. The eastern end of the AAP contains buildings of C17 date whilst elsewhere (westwards) are the sites of a number of structures which were present in 1842 (Map 4).

### **7.2 AsHAP**

**7.2.1 Great Bramshill** An inclusive area within 7.1.1 from Paynes Cottage up to Copes Lane but omitting the lightly wooded zone between the row of properties and the southern edge of the A327. Extant buildings indicate that this is an occupation site of C17 or earlier (Map 4).

**7.2.2 Moor Place Farm and immediate catchment.** This is a manor house site and possible DMS (Map 7).

**7.2.3 Bramshill Park (Little Bramshill)** contains a number of important archaeological sites (12.0). Bramshill House (Little Bramshill) has now been engulfed by ancillary college buildings. The earliest house recorded was built c.1360 and there are, perhaps, traces of this in the south wing of the present house and there are apparent *in situ* remains in the north front including one medieval window (VCH 4: 37). These features argue in favour of an AHAP for the house and immediate surrounds (Map 7).

**8.0 CHURCH & CHURCHYARD**

Pre-fabricated church hall only.

**9.0 BUILDINGS**

PRN	Details	Dates	Grade
3633	Bramshill House, walls & turrets	early C17	I
3634	Bramshill House: gate & piers to W	C18	II
3635	Bramshill House: stable block	late C18	II
3636	Bramshill House: High Bridge	early C19	I
3637	Bramshill House: Bottom Farmhouse	C17	II
3638	Bottom Farmhouse: barn SE of	C17	II
3641	Cowdery's Farmhouse, Ford Lane	C17	II
3642	Springwater Cottage, Ford Lane	C17, 18	II
3643	Hall's Farmhouse, Ford Lane	C16,17	II
3644	Keeper's Cottage, Copes Lane	C16, 17	II
3645	Bailey's Cottage, Heckfield Road	C18	II
3646	Hollyoak Farmhouse, Heckfield Road	C17, 18	II
3647	Heckfield Farmhouse, barn at	C18	II
3648	Oak Tree Cottage, Heckfield Road	C17	II
3649	Payne's Cottage, Heckfield Road	C18, 19	II
986	The Old Plough, Plough Lane	early C18	II
3650	Moor Place Farmhouse (Great Bramshill Manor)	C15, 16, 17, 19	II*
3651	Moor Place Farmhouse: barn <i>c.</i> 50m E of	C17	II
unlisted	474810 161210 Pond Cottage	C18 / 19	
unlisted	475020 161070 Bramshill Cottage	C18 origin?	

**10.0 SMR DATA** SW 47450 15900, NE 47700 16100

SU76SE	No.	
	2	47621 16058 Bronze Age. Bowl barrow; Cudbury Clump.
	3	47632 16008 Medieval. Park Pale 76820 15962 to 47582 16054.
	4	47551 16029 Undated. Circular enclosure.
	11	47531 16065 Medieval. Formerly Manor House of Great Bramshill.
SU76SW	23	47480 16120 Settlement site. Bramshill hamlet (Domesday Book).
SU75NE	12	47588 15963 Medieval. Site of predecessor building to 13.
	13	47588 15963 Jacobean House built AD 1605-1612.
	16	47580 15990 Post-medieval. Ice house. Supposed location apparently not consistent with present buildings layout.
	18A	47500 15900 <i>c.</i> 1625. Landscape park.
	18B	47500 15900 <i>c.</i> 1625. Walled garden.
	18C	47500 15900 <i>c.</i> 1625. Bowling green.
	18D	47500 15900 <i>c.</i> 1625. Formal garden.
	18E	47500 15900 <i>c.</i> 1625. Pond.

18F	47500 15900	c. 1625. Lake.
18G	47500 15900	c. 1625. Avenue.
18H	47500 15900	c. 1625. Maze.
18I	47500 15900	c. 1625. Arboretum.
23	47500 15900	Medieval. Deer Park.

## 11.0 ADDITIONAL SITES / FEATURES

1	474460 161070	Site of building 1842
2	474495 161160	Site of building 1842
3	474510 161220	Site of building 1842
4	474610 161230	Approx. sites of buildings 1842
5	474715 161240	Site of building and enclosure 1842
6	474730 161225	Site of building 1842
7	474750 161230	Site of building 1842
8	474850 161205	Approx. site of building 1842
9	474890 161205	Site of building 1842
10	475100 161200	Earthworks?
11	474500 161420	Site of building 1842, house platform visible
12	474500 161460	Site of building 1842 associated with 11
13	474465 161480	Site of building complex 1842

## 12.0 CARTOGRAPHIC SOURCES

- Tithe Map 21M65/F7/81/2 (\*1842);
- GSGB 284 Basingstoke
- OS 1: 2500 SW 475520 159360, NE 476130 160260
- OS 1: 10000 SW 474500 159000, NE 476500 161600
- OS 1: 25000 Pathfinder 1188 (SU 66/76), Mortimer & Arborfield; 1204 (SU 65/75, Basingstoke

## 13.0 BIBLIOGRAPHY

Cope, Sir W undated *Bramshill: its History and Architecture*. London, HJ Infield.

## 14.0 PRIMARY HISTORIC SOURCES

### 14.1 Domesday Book

23, 37 Hugh of Port. 2 free men held it from King Edward in freehold as 2 manors. Then it paid tax for 1 hide; now for ½ hide. 2 villagers and 2 smallholders with 1 plough. A fourth part of a mill at 10d; meadow, 3 acres; woodland at 2 pigs. Value before 1066 and later 10s; now 20s.

43, 4 Gilbert (of Breteuil) also holds (Great) Bramshill with the King's manor, Swallowfield, which is in Berkshire. Alfwy and Alfsi held it from King Edward in freehold as 2 manors. Then and now it paid tax for 2 hides less 1 virgate. Land for 2 ploughs. In lordship 2; 4 villagers with 1 plough. A mill at 25d; meadow, 6 acres; woodland at 2 pigs. Value before 1066, 40s; later 20s 5d; now 25d (?). This manor never belonged to the King's manor so the Hundred states.

## 14.2 Subsidy Rolls

1334		£1. 5.10	
1524	<i>1st survey:</i>	Not listed.	
	<i>2nd survey:</i>	£0. 5. 0	(5 taxpayers)

## 14.3 Manorial Documents

Great Bramshill (also known as Moor Place) and Little Bramshill (Bramshill Park) were manors of Eversley (*qv*).

## 14.4 Hearth Tax

1665	89 hearths chargeable (18 houses)
	13 hearths not chargeable (13 houses). Total: 31 houses.

### *Lower Bramshill*

7 hearths chargeable (3 houses)

## 15.0 PLACE NAME

1086 *Bromescelle*; 1167 *Bromeshelle*. OE *Bromeshyll* 'broom hill'.

## 16.0 PHOTOGRAPHS

## 17.0 OTHER PROJECT ELEMENTS

**17.1 Common:** Bramshill Common 476000 162000

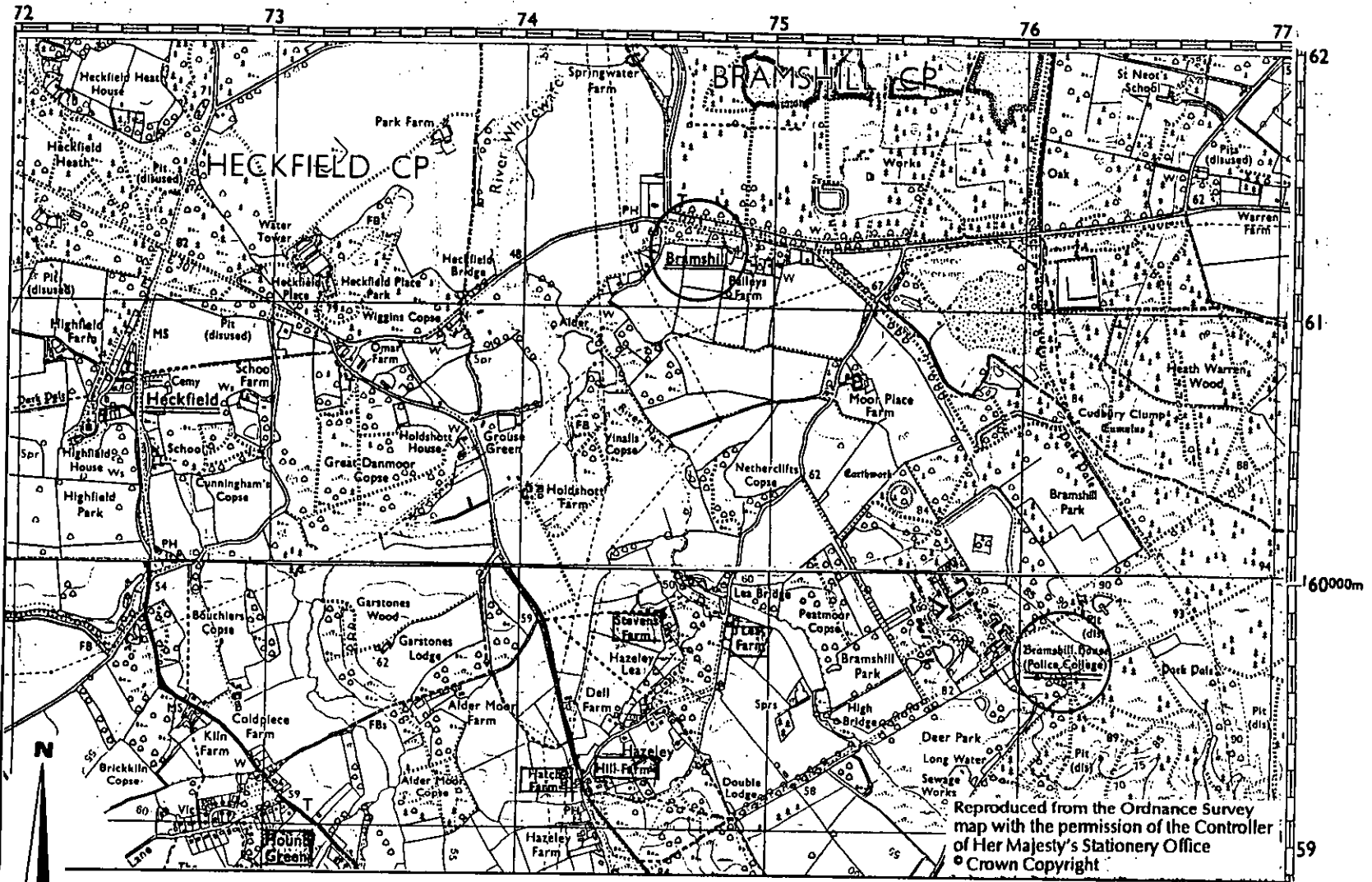
## 17.2 Other parish settlements include:

Moor Place Farm 475350 160720	1379, atte Moore (Marshy Land; Home of William atte Moor)
Well House Farm 4753500 163210	1379, atte Well (home of William atte Well).

**17.3 A medieval deer park** was situated at Bramshill Hall.

## 18.0 ILLUSTRATIONS

- 1 Location map at 1: 25000
- 2 Tithe Map transcription at 1: 2500; Great Bramshill (Row)
- 3 Map: Development and Archaeological Features at 1: 2500; Great Bramshill (Row)
- 4 Map: Areas of Archaeological Potential at 1:2500; Great Bramshill (Row)
- 5 Tithe Map transcription at 1: 2500; Little Bramshill (Hall)
- 6 Map: Development and Archaeological Features at 1: 2500; Little Bramshill (Hall)
- 7 Map: Areas of Archaeological Potential at 1: 10000; Little Bramshill (Hall) and Moor Place Farm (Great Bramshill manor house)

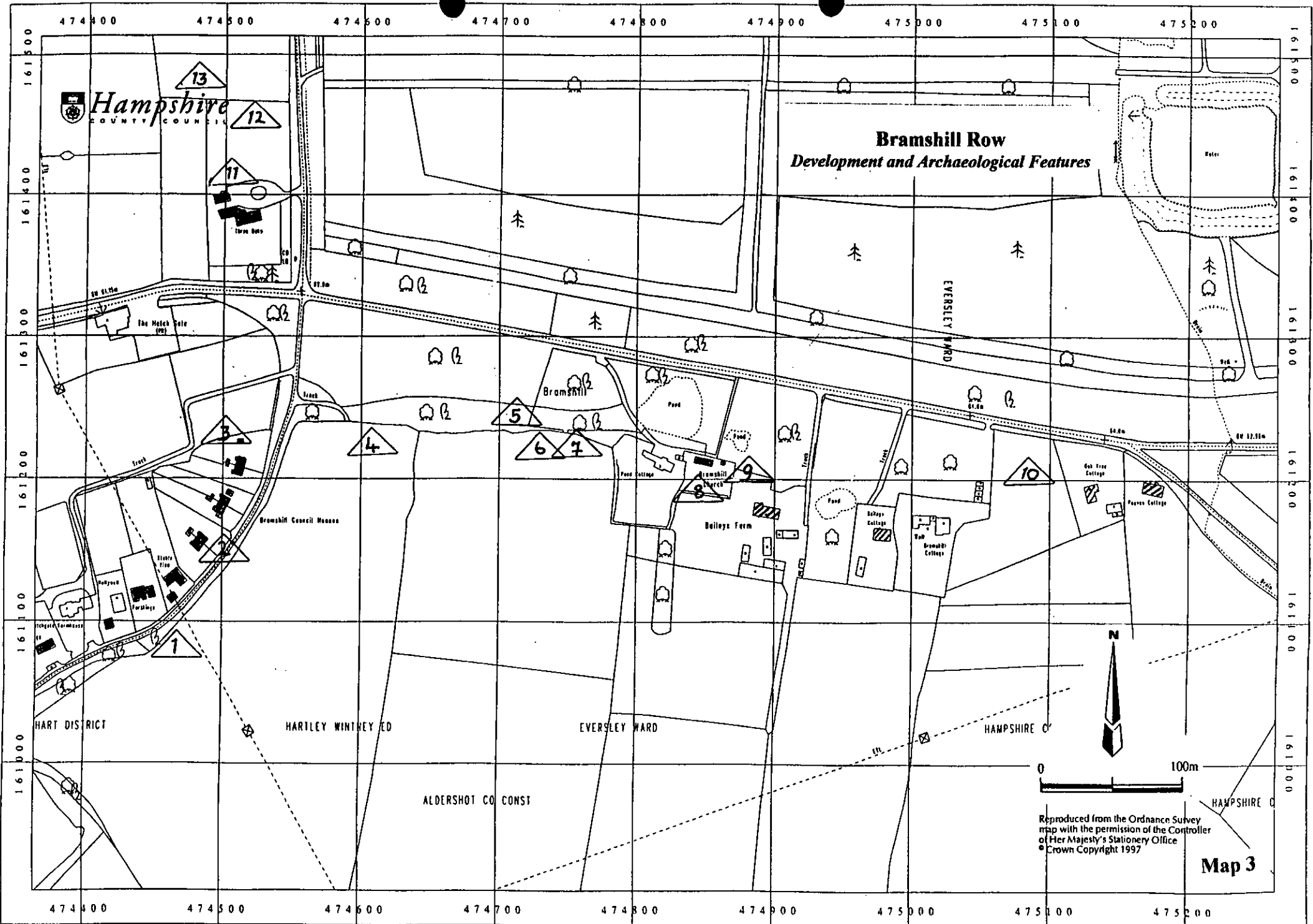


# Bramshill

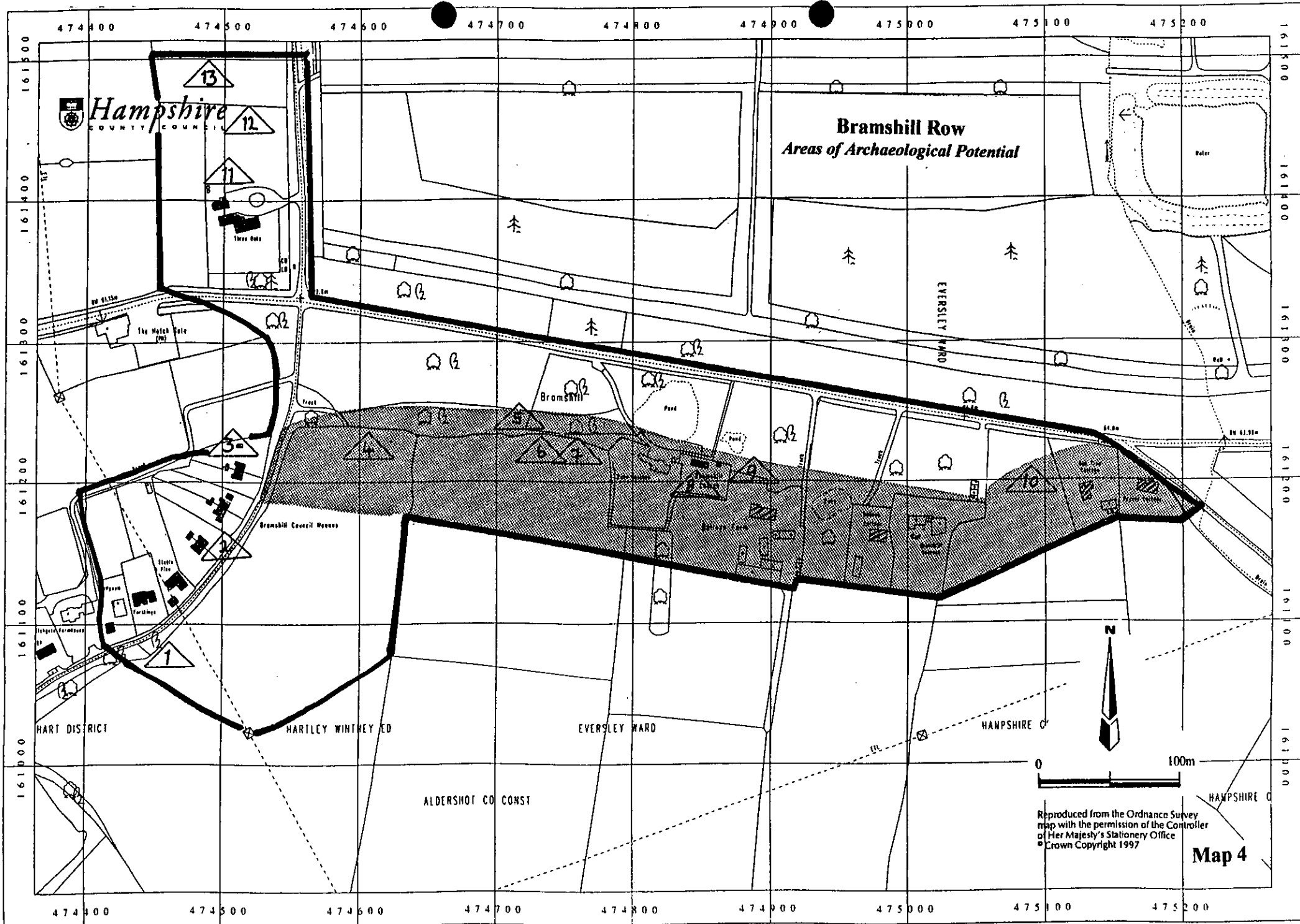
Location

Map 1







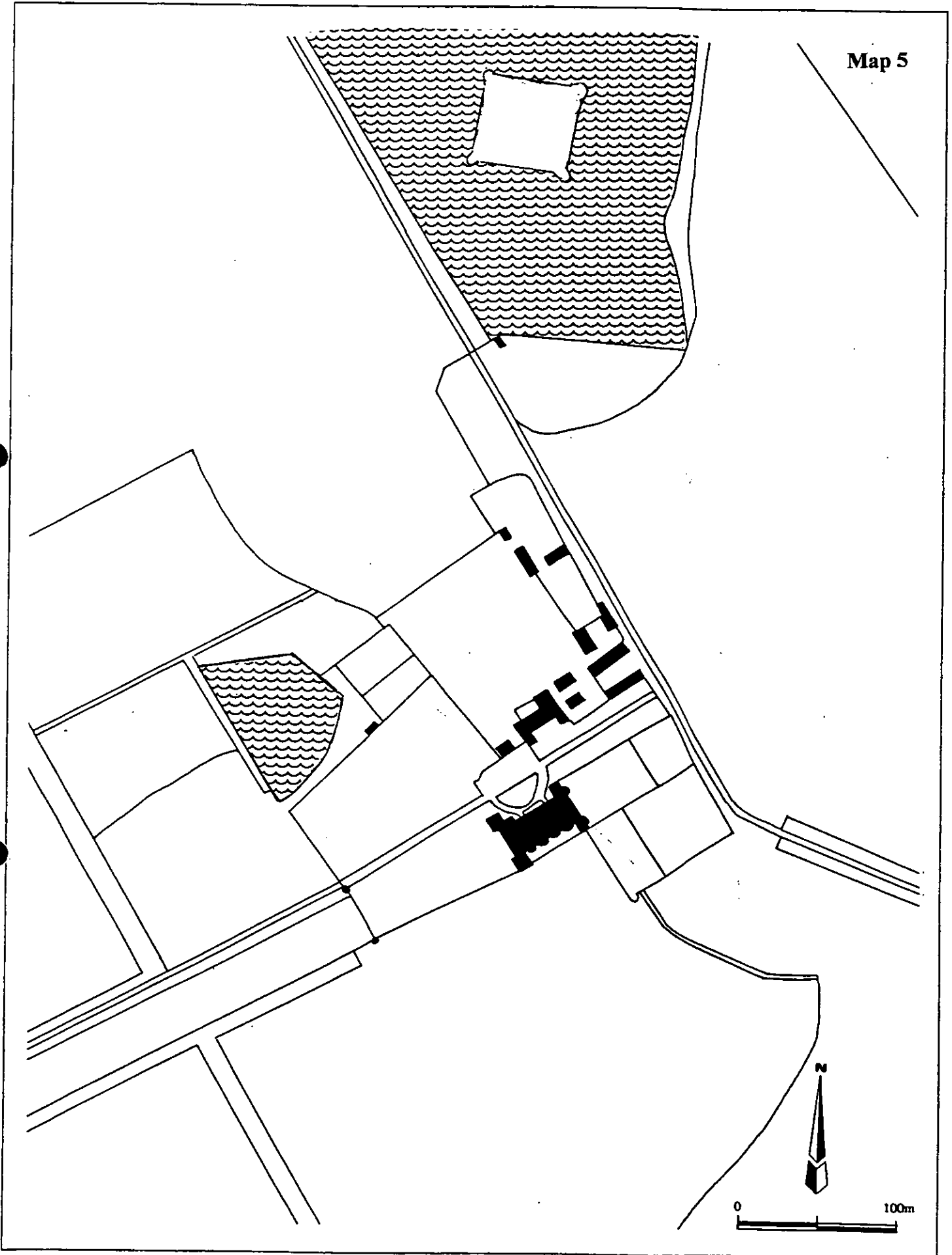


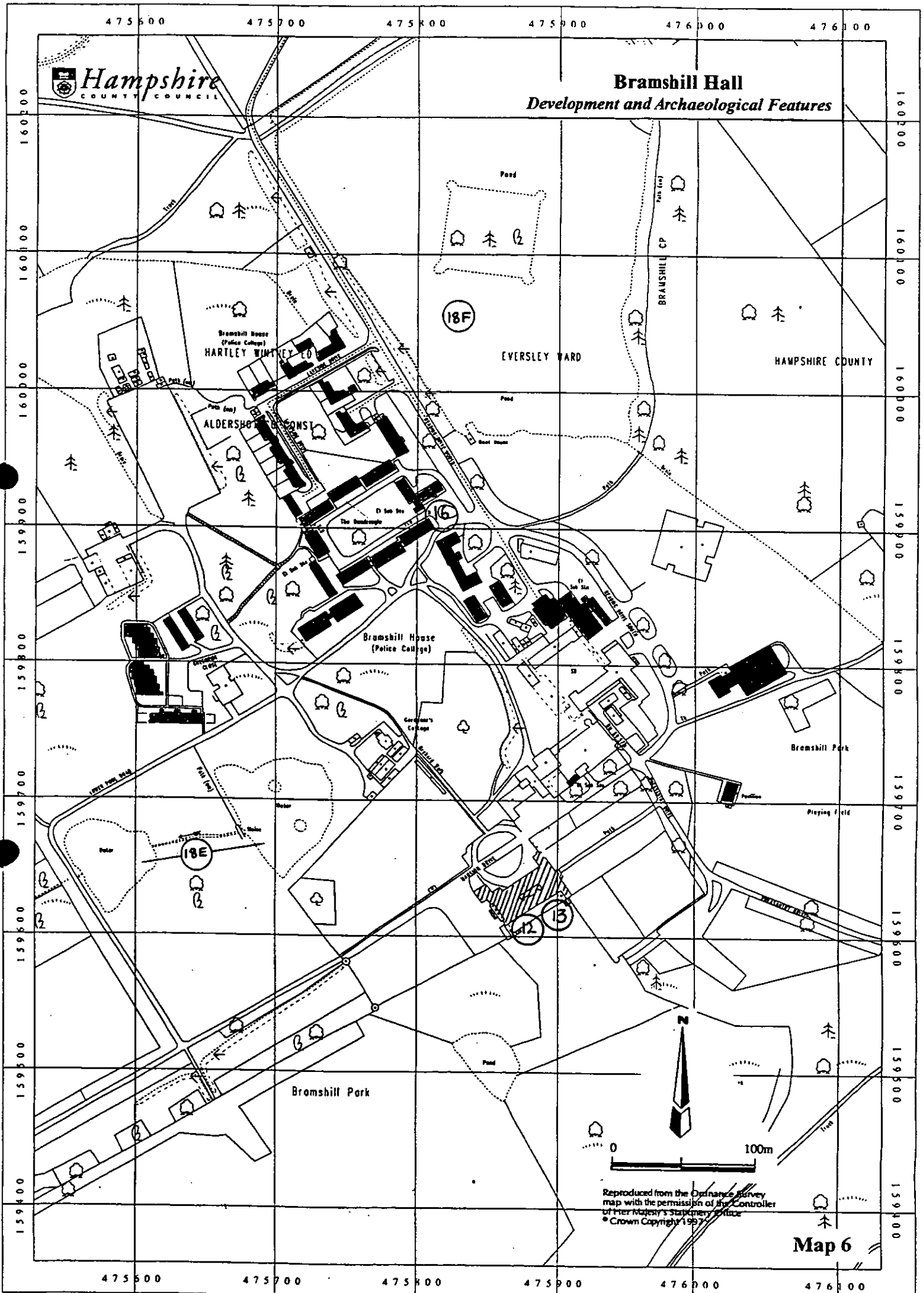
Reproduced from the Ordnance Survey map with the permission of the Controller of Her Majesty's Stationery Office  
 © Crown Copyright 1997

**Map 4**

# Bramshill (Little)

transcribed from the Tithe Map of c.1842





# Bramshill

## Great Bramshill & Little Bramshill

Map 7

