

1.0 PARISH	Horndean; formerly a separate parish
2.0 HUNDRED	Finchdean
3.0 NGR	471100 113500
4.0 GEOLOGY	Upper Chalk / Bracklesham Beds

5.0 SITE CONTEXT (Map 2)

5.1 There are two Blendworth settlements. The first of these is 0.5km east of Horndean, set around the mid-nineteenth-century church of Holy Trinity. However, this is not the original parish centre; that lies a further further 0.5km eastwards and is now the site of Blendworth Farm and St Giles' Farm. St Giles' Farm preserves the name of the former parish church that has been demolished. For the sake of clarity, the two settlements will be henceforth referred to as Blendworth (the present centre) and Old Blendworth (the medieval settlement and the principal subject of this survey chapter).

5.2 Old Blendworth is situated on rising ground (south to north) at c. 100m AOD. The settlement is set out around a web of roads that fan out in many directions. Approached from the south, the site of the former parish church stood at a fork in the road.

6.0 PLAN TYPE & DESCRIPTION (Maps 3, 4 / 1, 4 / 2, 5 / 1 & 5 / 2)

Blendworth: farm plus additional C19 buldings

Old Blendworth: irregular agglomeration

6.1 *Blendworth* About Blendworth there is little to say. The new parish church of Holy Trinity was built here in 1851-2 and this gave rise to the development of a C19 hamlet in the vicinity. Myrtle Farm might be C18. It should be noted that SMR entry SU 71 SW No. 41 is in error. The Blendworth referred to in the 1327 tax return would, if anything, refer to Old Blendworth. However, such returns rarely relate to one identifiable settlement but rather to a parish, manor or estate. This misunderstanding re Blendworth was perpetrated by Beresford (1954: 352) and Beresford and Hurst (1971: 188).

6.2 *Old Blendworth (irregular agglomeration)* is the medieval central place of the former parish of Blendworth. The Tithe Map of 1839 (Map 3) shows the Church of St Giles at a road junction with St Giles' Farm opposite to the south and Blendworth Farm adjacent to the north. This apart, there were only five or so small cottages. The settlement was probably never large but SMR entries SU 71 SW Nos 64 & 65 (Paragraph 10.0) record the discovery of C10, C13 & C14 in the field immediately west of the church. Site inspection revealed low earthworks in the same field (Paragraph 11.0, No. 3). This suggests that there is a *prima facie* case for settlement contraction and therefore SMR entry SU 71 SW No. 41 has been transferred to Old Blendworth. The remarks made re tax returns in Paragraph 6.1 still apply.

6.3 *Site visit condition:* Hazy sun (3.5.99)

Blendworth

7.0 ARCHAEOLOGICAL POTENTIAL (Maps 5 / 1 & 5 / 2)

No areas of potential have been identified for the C19 hamlet of Blendworth.

7.1 *AsAP*

Most of the present settlement of Old Blendworth including fields on its western margin where the SMR and site inspection indicate archaeological potential.

7.2 *AsHAP*

One area within 7.1 above that includes the site of St Giles' church and churchyard St Giles' Farm and the field immediately west of the church (see Paragraph 6.2 above). The site of demolished buildings to the north of the churchyard are also within this area.

8.0 CHURCH & CHURCHYARD

8.1 Holy Trinity 1851-2 (*architect* WG & E Habershon)

8.2 St Giles, the predecessor church, has been demolished. It was largely Georgian (Pevsner & Lloyd, 1967: 111).

- According to VCH, material from old church, some possibly Medieval, was transferred to the new church (VCH 3: 82) but this can only apply to fittings (and certainly the Plate) since St Giles was not demolished until 1960.
- The history and architectural style of St Giles is somewhat difficult to determine. At the new church of Holy Trinity there is a list of Rectors of Blendworth dating back to 1303. St Giles was a dependent chapel of St Michael, Chalton but there is no evidence that it was serviced by curates. The Rectorial lists for Chalton & Blendworth provide no match until 1950 although the Rector of St Michael was also Rector of the nearby dependent chapel of St Hubert at Idsworth.
- 1759 St Giles was rebuilt and possibly enlarged. The full extent of the rebuilding is not known but in 1967 (*i.e.* post-demolition) Pevsner and Lloyd described it as *largely Georgian* (1967: 111). The rebuilding must have replaced in substance, a medieval predecessor.
- By 1847 rebuilding and / or enlargement was again deemed necessary but the tiny churchyard determined that a new church had to be built elsewhere.
- The churchyard of St Giles has been preserved as a public garden. The foundations of the demolished church are marked out with concrete slabs.

9.0 BUILDINGS excluding buildings in Horndean, Catherington etc. (Maps 4 / 1 & 4 / 2)

PRN	Details	Dates	Grade
*	Cadlington House (Manor)	c. 1850, 1894	II
*	Church of Holy Trinity	1851	II
*	107 (Manor Cottage) & 108	C17, 20	II
*	109 Peppercorn Cottage	C17, 18	II
*	Hook Cottage	1720, C19, 1934	II
*	Hook Cottage: gateway, paving, roadside wall	C19, 20	II
*	Pyle Farmhouse	C18, 19	II

Blendworth

*	Pyle Farmhouse: barn 50m south of	C18	II
*	Pyle Farmhouse: granary 20m east of	C19	II

10.0 SMR DATA SW 470500 112800, NE 472000 114000 (Maps 4 / 1 & 4 / 2)

SU 71 SW	No.		
	37	471650 113580	Medieval. C18 but some fabric thought to be medieval. Original church demolished 1961 and only wall footings remain.
**m	41	471700 113600	Medieval. Supposed shrunken village based upon evidence of 1327 tax return. [Original entry states: <i>No physical evidence of shrinkage (1968)</i> but this is a reference to the C19 Blendworth. There is physical evidence of shrinkage at Old Blendworth. The map reference has been changed accordingly. Beresford & Hurst (1971: 188) give the same incorrect reference in their gazetteer and this is doubtless the source of the error.
	43	470520 113790	Post-Medieval. Toll house c. 1710. Portsmouth-Sheet Bridge Turnpike Trust.
	44	470700 113300	Post-Medieval. Working brewery (George Gale).
	49	471000 113000	Mesolithic. 10 x flint cores from New Barn area. Draper Collection.
	64	471600 113600	Saxon. C10 pottery (retained by MF Hughes).
	65	471600 113600	Medieval. C13, C14 pottery (retained by MF Hughes).
	67	471200 113800	Undated. Earthwork in meadow north of Blendworth House.
	69A	471200 113800	Roman. Pottery sherds.
	69B	471200 113800	Roman. Tiles found in association with 69A.
	70	471200 113800	Medieval. Pottery find spot.
	78	471500 113700	Neolithic. Scatter of flint implements and flakes.

10.2 Hampshire Romano-British Settlements survey

Hants No.	NGR	Parish	NAR / NMR Nos
125	471670 114010	Blendworth	SU71SW10 / 242808

10.3 Scheduled Ancient Monuments (SAMs)

SAM No.	NGR	Site
None		

11.0 ADDITIONAL SITES / FEATURES (Maps 4 / 1 & 4 / 2)***Blendworth***

1	471200 113600	Delete SMR 41 from this site
2	471100 113580	Earthwork of uncertain date & nature
3	471050 113435	Earthwork associated with Myrtle Farm

Old Blendworth

1	471550 113740	Low earthworks
2	471590 113745	Site of building present on the Tithe Map of 1839
3	471600 113600	Low earthworks
4	471665 113610	Site of building present on the Tithe Map of 1839
5	471700 113600	New site fo SMR 41

12.0 CARTOGRAPHIC SOURCES

- Tithe Map 21M65/F7/24/2 (1839 / 1841)
- GSGB 316 Fareham
- OS 1: 2500 New Blendworth: SW 470700 113240, NE 471600 113835
Old Blendworth: SW 471500 113200, NE 472000 114000
- OS 1: 25000 Pathfinder 1285 (SU 61/71), Horndean.

13.0 BIBLIOGRAPHY

- Beresford M 1954 *The Lost Villages of England* Stroud, Sutton (1998 edition)
- Beresford M & Hurst JG 1971 *Deserted Medieval Villages* Guildford & London, Lutterworth Press
- HTS 6: 189-198 (included in the Horndean section)
- VCH 3: 84

14.0 PRIMARY HISTORIC SOURCES**14.1 Domesday Book**

Not mentioned.

14.2 Subsidy Rolls

1334		£5.11.6	
1524	1st survey	£1.12.6	(25 taxpayers)
	2nd survey	£1.2.6	(26 taxpayers)

14.3 Manorial Documents

Blendworth was a part of the manor of Chalton.

14.4 Hearth Tax 1665

81 hearths chargeable (36 houses)
12 hearths not chargeable (9 houses). Total: 45 houses.

15.0 PLACE NAME

c. 1170 *Blednewrthie*; 1207 *Blendeworth*; 1256 *Bledenewrth*; 1280 *Blenteworth*.

Perhaps OE 'Blædna's curtilage'.

16.0 PHOTOGRAPHS

17.0 OTHER PROJECT ELEMENTS

17.1 Pre-Conquest Charters

None.

17.2 Other parish settlements include:

<i>Name</i>	<i>MSP No.</i>	<i>Map ref.</i>	<i>First recorded</i>
None listed.			

17.3 Enclosures

Parliamentary:

<i>NEP no.</i>	<i>Act</i>	<i>Order</i>	<i>Award</i>	<i>Details</i>
14014	1810		1814	Forest of Bere within which Blendworth had rights.
14026	1812		1816	Blendworth Common, Bere Forest.

Formal Agreements:

<i>NRP no.</i>	<i>Agreement</i>	<i>Award</i>	<i>Details</i>
None.			

17.4 Commons & Greens (residual)

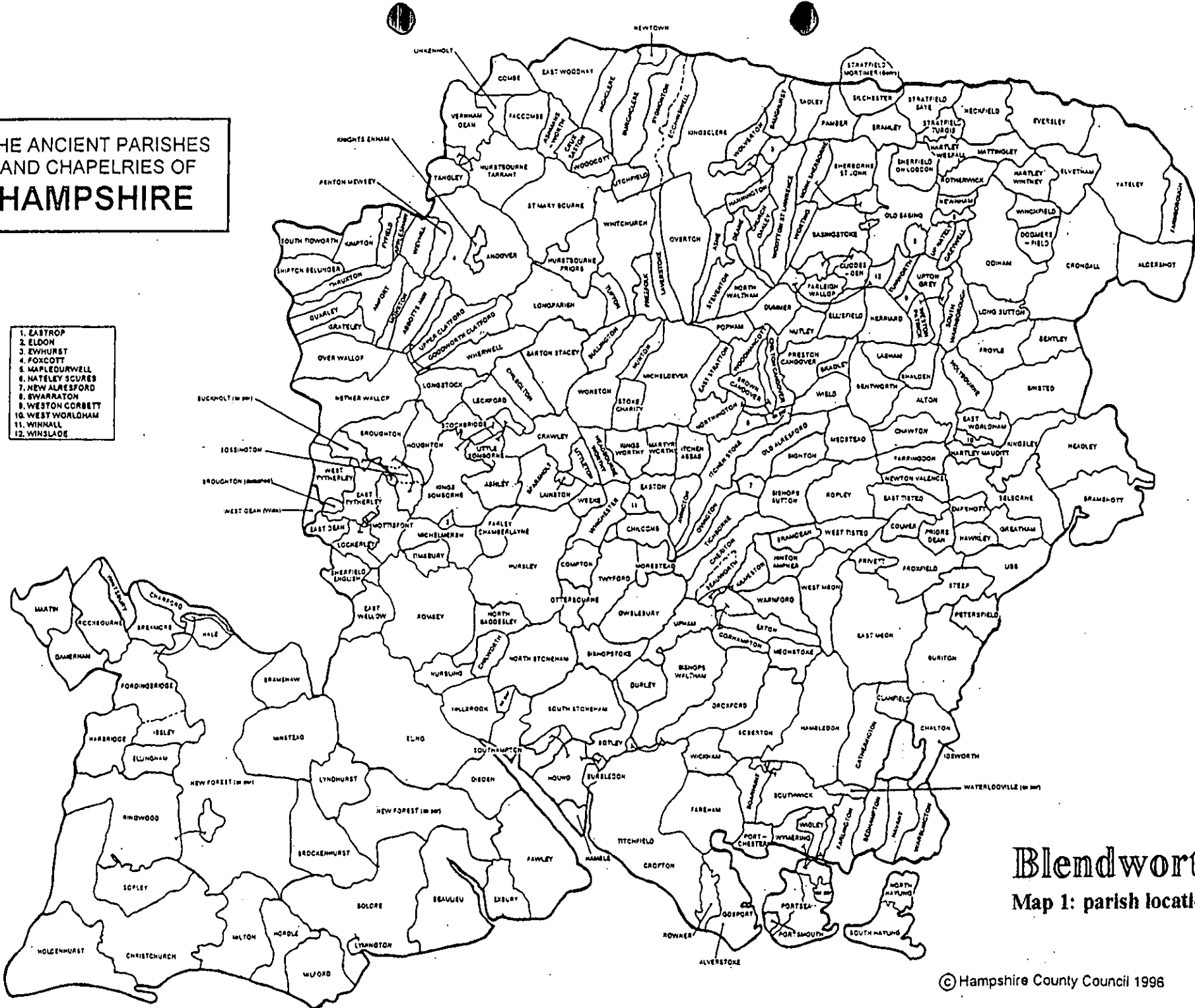
None survives intact though a pond, marked within an open space on the Tithe Map but now enclosed, may be a relic of a former green at the junction of four roads opposite the parish church.

18.0 ILLUSTRATIONS

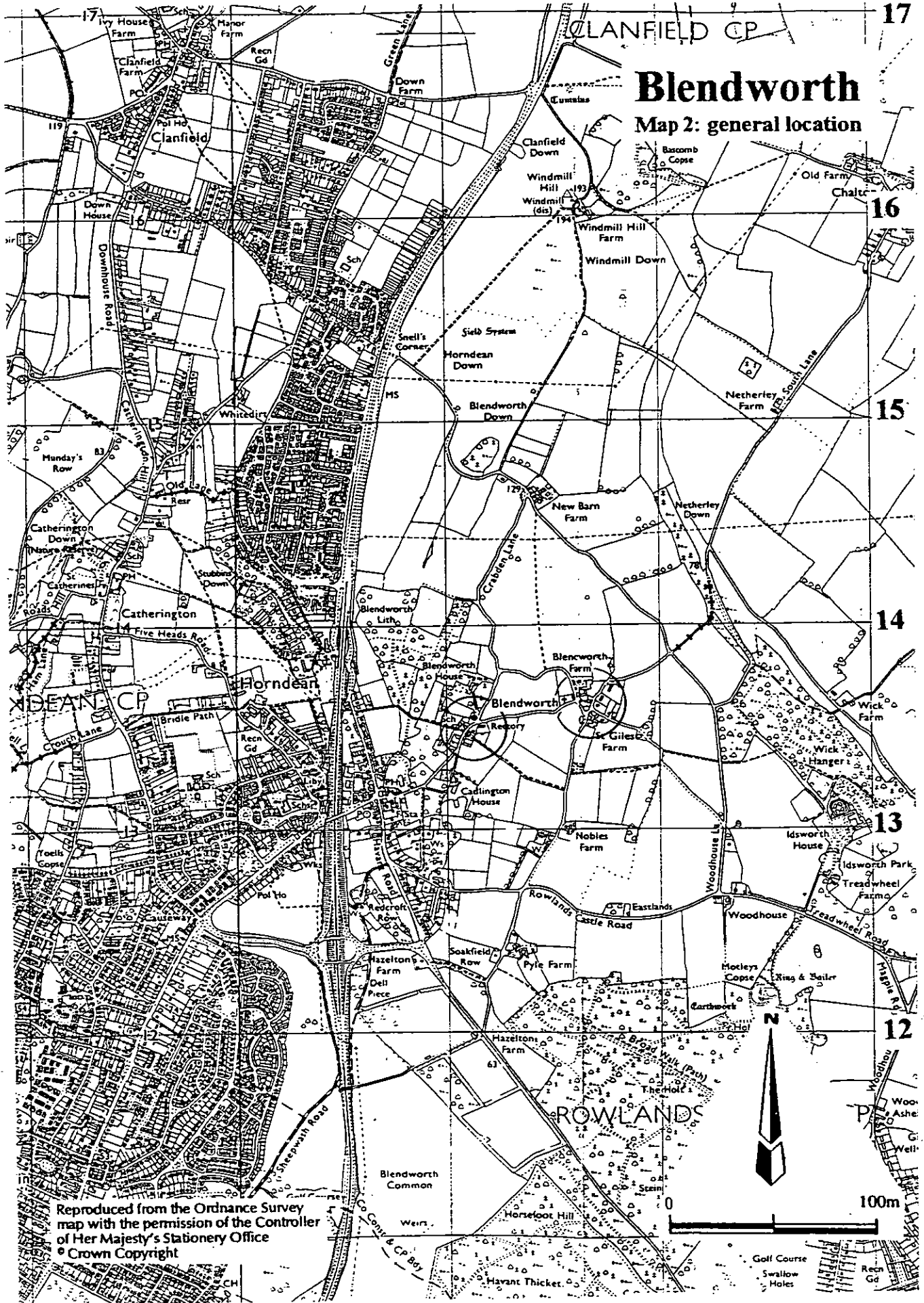
- 1 Map 1: Parish location (not to scale)
- 2 Map 2: Settlement location at 1: 25000
- 3 Map 3 / 1: 1839 Tithe Map transcription (Blendworth) at 1: 2500 reduced to 71%
- 4 Map 3 / 2: 1839 Tithe Map transcription (Old Blendworth) at 1: 2500 reduced to 71%
- 5 Map 4 / 1: Development and archaeological features (Blendworth) at 1: 2500 reduced to 71%
- 6 Map 4 / 2: Development and archaeological features (Old Blendworth) at 1: 2500 reduced to 71%
- 7 Map 5 / 1: Areas of archaeological potential (Blendworth) at 1: 2500 reduced to 71%
- 8 Map 5 / 2: Areas of archaeological potential (Old Blendworth) at 1: 2500 reduced to 71%

THE ANCIENT PARISHES AND CHAPELRIES OF HAMPSHIRE

1. EASTROP
2. ELDON
3. EWHURST
4. FOXCOTT
5. MAPLEOURWELL
6. NATELEY SCURES
7. NEW ALRESFORD
8. SWARRANTON
9. WESTON CORBETT
10. WEST WORLDHAM
11. WINNALL
12. WINSLADE

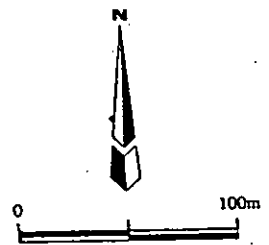
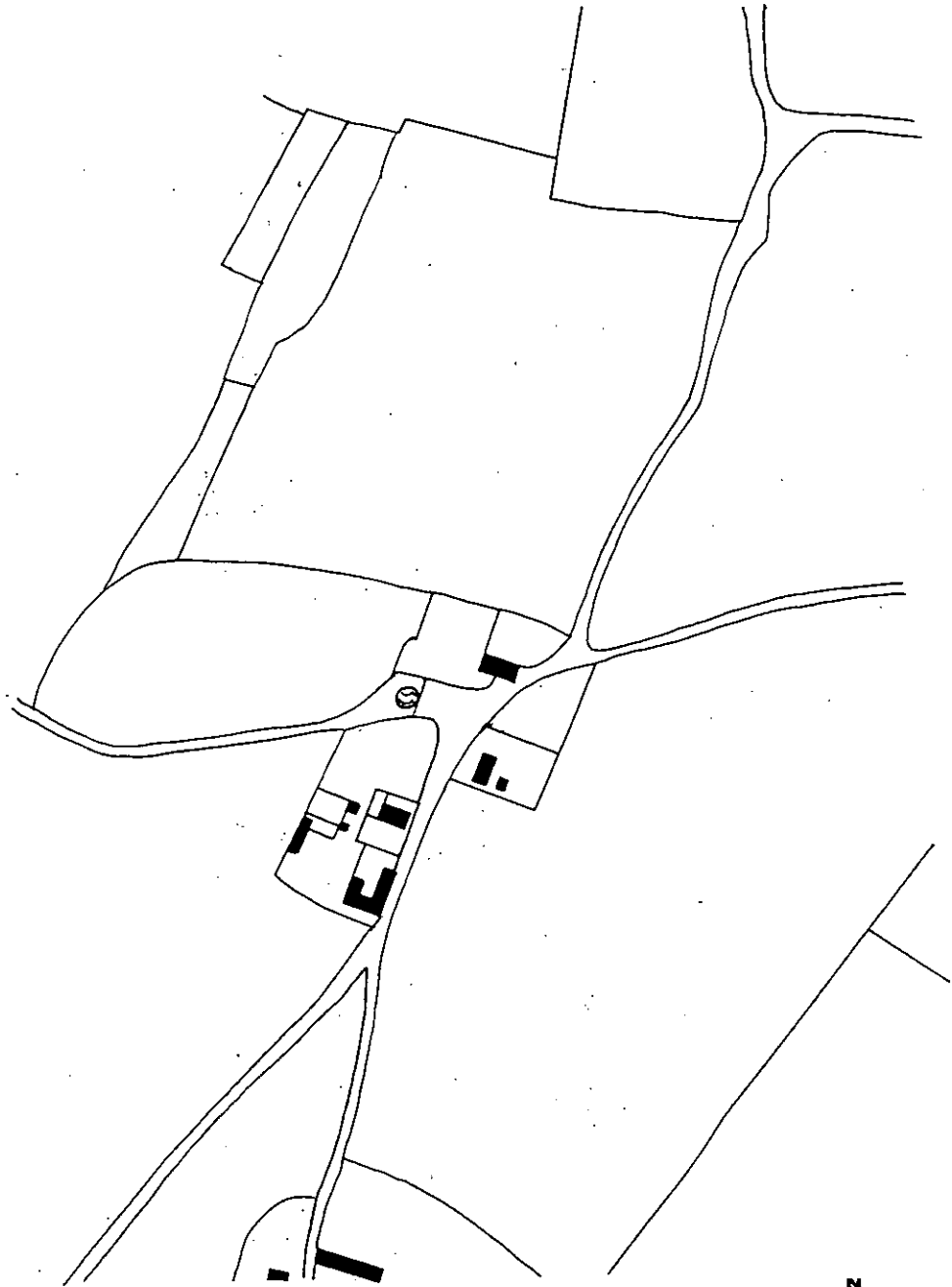


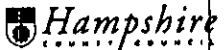
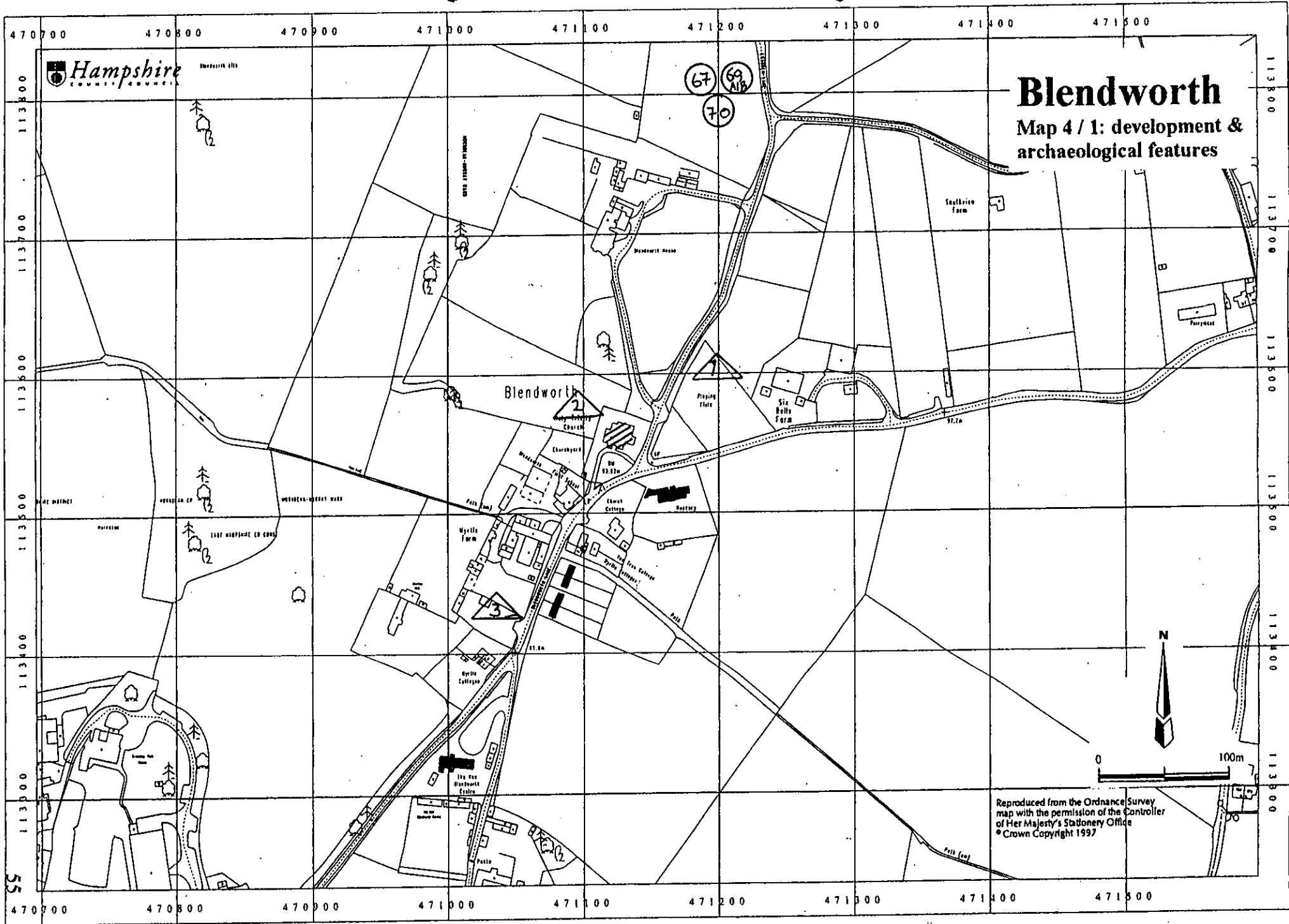
Blendworth
Map 1: parish location



Blendworth

Map 3 / 1: transcribed from the
Tithe Map of 1839

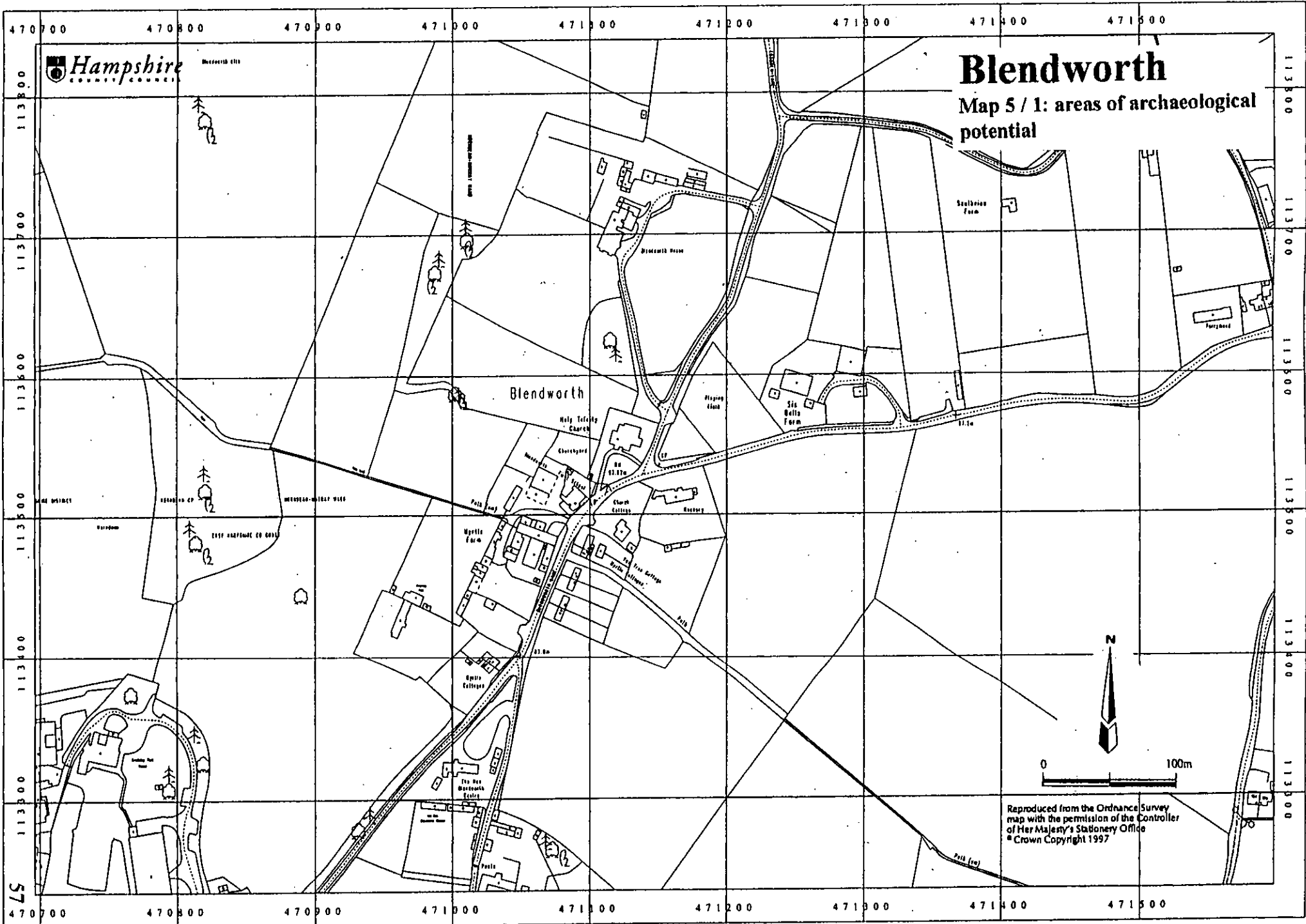




Blendworth

Map 4 / 1: development & archaeological features

Reproduced from the Ordnance Survey map with the permission of the Controller of Her Majesty's Stationery Office
 © Crown Copyright 1997



Blendworth

Map 5 / 1: areas of archaeological potential

Blendworth

Holy Trinity Church

Churchyard

Blendworth House

Skelbriar Farm

Six Wells Farm

St. Peter's Church

St. Peter's Churchyard

St. Peter's Farm

St. Peter's Farm

St. Peter's Farm

St. Peter's Farm

St. Peter's Farm

St. Peter's Farm

St. Peter's Farm

St. Peter's Farm

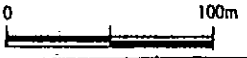
St. Peter's Farm

St. Peter's Farm

St. Peter's Farm

St. Peter's Farm

St. Peter's Farm



Reproduced from the Ordnance Survey map with the permission of the Controller of Her Majesty's Stationery Office
© Crown Copyright 1997

57

Old Blendworth

Map 3 / 2: transcribed from the
Tithe Map of 1839

