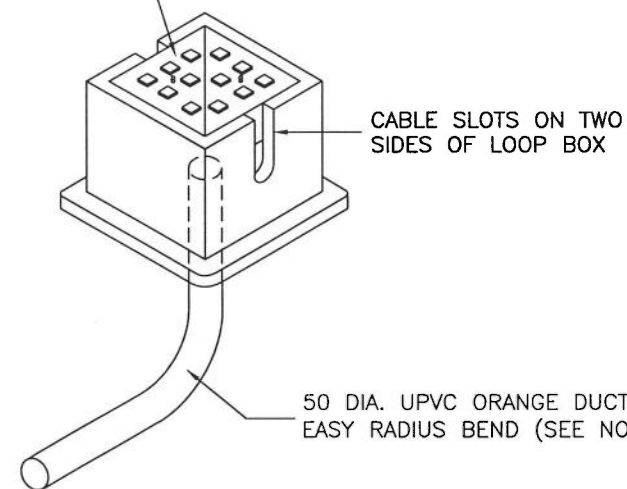
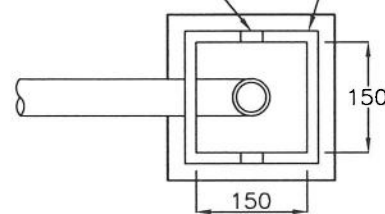


LOOP ENTRY SLOTS TO BE PARALLEL TO VERGE

DUCTILE IRON CABLE LOOP BOX TO BS 5834-2, GRADE A (SEE NOTE 4)



CABLE SLOTS ON TWO SIDES OF LOOP BOX

50 DIA. UPVC ORANGE DUCT WITH 200 EASY RADIUS BEND (SEE NOTE 3)

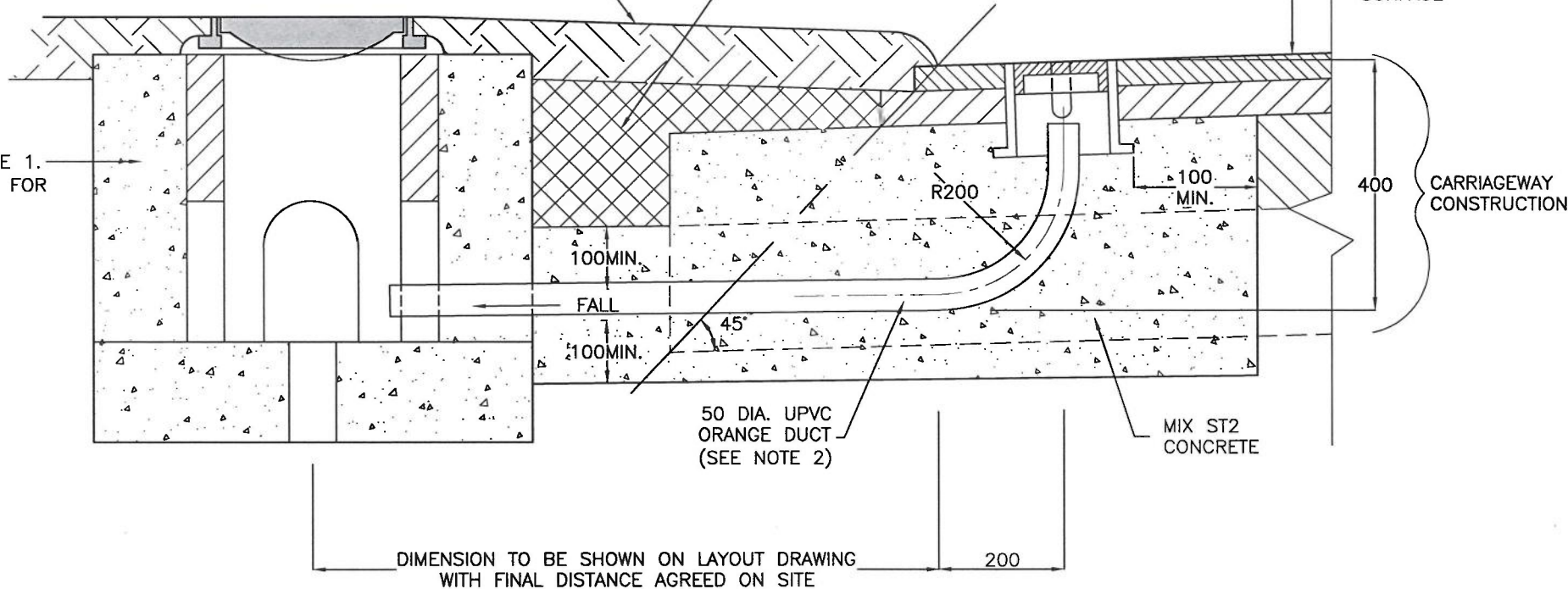
**CARRIAGEWAY LOOP TAIL CHAMBER**

VERGE ← → CARRIAGEWAY

REINSTATE VERGE WITH TOPSOIL TYPE 5A OR 5B 100 THICK TO SAME PROFILE AS ADJACENT VERGE AND SEED IN ACCORDANCE WITH CLAUSE 3005

COMPACTED SUBBASE TO CLAUSE 803 OR 894R

CARRIAGEWAY SURFACE



TRAFFIC SIGNAL DRAWPIT TYPE 1. (SEE DRAWING HCC11/T/010 FOR FURTHER INFORMATION)

50 DIA. UPVC ORANGE DUCT (SEE NOTE 2)

MIX ST2 CONCRETE

DIMENSION TO BE SHOWN ON LAYOUT DRAWING WITH FINAL DISTANCE AGREED ON SITE 200

**SECTION THROUGH VERGE/CARRIAGEWAY**

**NOTES:**

1. ALL DIMENSIONS ARE IN MILLIMETRES
2. THIS DETAIL IS AN ALTERNATIVE TO THE DETAILS OF THE CONNECTION OF A VEHICLE DETECTOR LOOP SHOWN ON DRAWING HCC11/T/050 AND SHOULD ONLY BE USED WHERE NO KERB EXISTS OR WHERE COMBINED KERB DRAINAGE UNITS ARE TO BE INSTALLED.
3. DUCTS SHALL BE ORANGE 50 INTERNAL DIA. WITH SMOOTH BORE AND LABELLED "TRAFFIC SIGNALS" AT A MAXIMUM 1000 INTERVALS AND SHALL BE INSTALLED WITH A DRAWCORD.
4. CABLE LOOP BOX TO BE 150 x 150 CLEAR OPENING, 150 DEEP, WITH 2No. SLOTS FOR LOOP CABLE ACCESS. IT SHALL BE BADGED "TS" AND MANUFACTURED BY INTEGRATED DUCTING SYSTEMS OR SIMILAR EQUIVALENT.
5. THE ST2 CONCRETE SURROUND TO THE LOOP BOX SHALL BE A MINIMUM OF 100 THICK.
6. FOLLOWING INSTALLATION OF THE LOOP BOX AND HARDENING OF THE CONCRETE BACKFILL AND SURROUND, THE CARRIAGEWAY SURFACE AND BINDER COURSES ARE TO BE REINSTATED TO MATCH EXISTING AND THE VERGE IS TO BE REINSTATED AND SEEDED.

REV	AMENDMENTS	DATE	CAD	CHKD	APPD

CONSULTANT

STUART JARVIS BSc DipTP FCIHT MRTPI DIRECTOR OF ECONOMY, TRANSPORT & ENVIRONMENT

SCHEME

**STANDARD DETAILS**

DRAWING TITLE

**CARRIAGEWAY LOOP TAIL CHAMBER**

HCC CADplot: 25.Feb.2020 at 9:13pm

DRAWN	CHECKED	SCALE @ A3
RB	JM <i>JM</i>	N.T.S
CAD	APPROVED	DATE
RB	AG <i>AG</i>	March 2020
DRG No.	REVISION	
HCC11/T/075		

Copyright Hampshire County Council. 2019

All rights, including translation, reserved. No part of this publication may be reproduced, stored in a retrieval system, or transmitted in any form or by any means (electronic, mechanical, photocopied, recorded or otherwise) without the prior written permission of Hampshire County Council. Requests should be directed to the Economy, Transport & Environment Department.