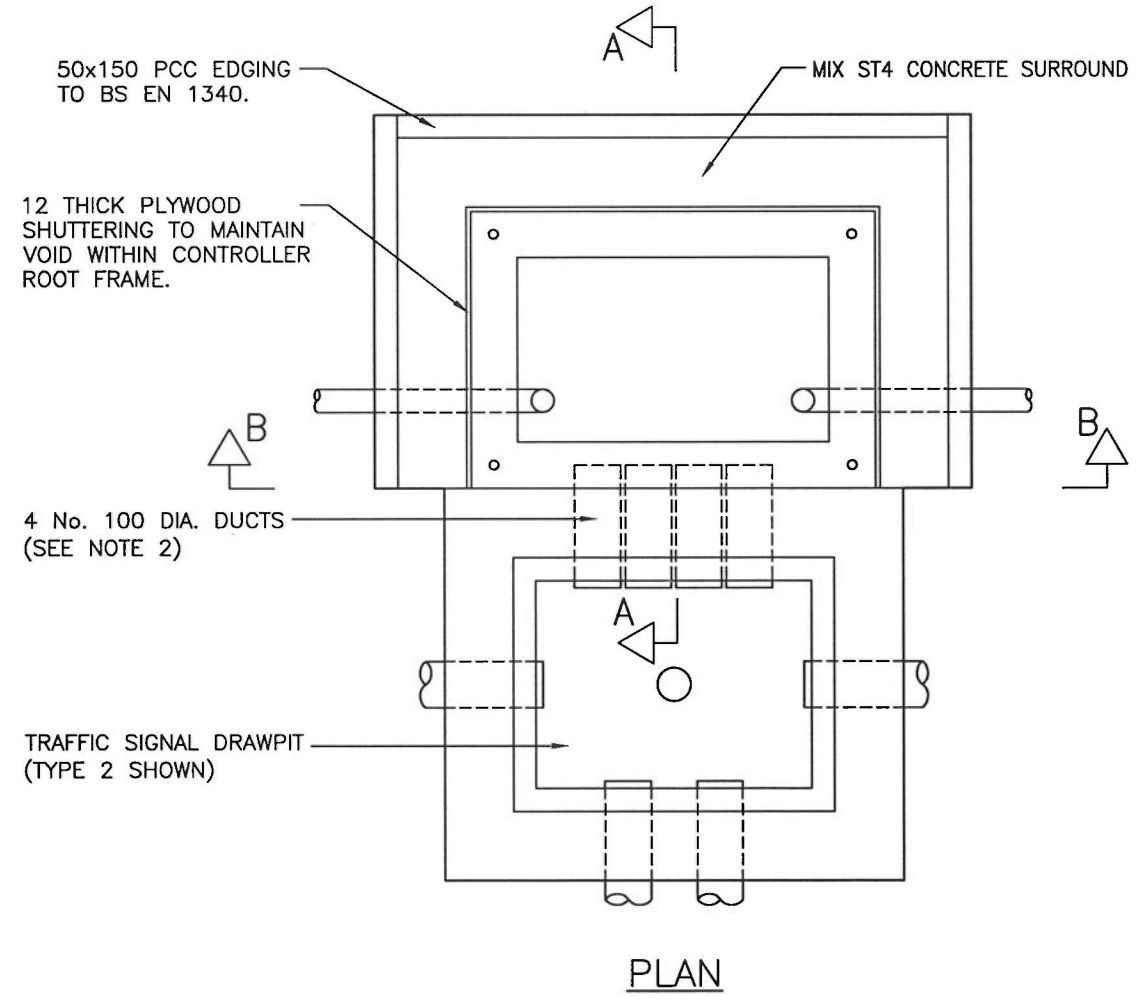


TRAFFIC SIGNAL DRAWPIT (TYPE 2 SHOWN). COVER AND FRAME OMITTED FOR CLARITY

SECTION A-A

SECTION B-B



PLAN

NOTES:

1. ALL DIMENSIONS ARE IN MILLIMETRES.
2. THE NUMBER OF DUCTS INTO THE CONTROLLER DRAW PIT ARE DETAILED ON THE TRAFFIC SIGNAL LAYOUT DRAWING. THE COLOUR OF TRAFFIC SIGNAL AND PRIVATE POWER SUPPLY DUCTS SHALL BE ORANGE AND THE COLOUR OF BT COMMS DUCTS SHALL BE GREY. UNLESS SPECIFIED ON THE TRAFFIC SIGNAL DRAWING, THERE SHALL BE 4 NO. DUCTS BETWEEN THE CONTROLLER VOID AND DRAW PIT.
3. THE DEPTH OF EXCAVATION FOR THE CONTROLLER CASE ROOT SHALL BE AS SPECIFIED ELSEWHERE IN THE CONTRACT.
4. TRAFFIC SIGNAL CONTROLLER CHAMBER TYPE A - AS SHOWN. TYPE B - AS SHOWN BUT WITH 900 WIDTH OF HARDSTANDING ALL ROUND CONSTRUCTED AS FOOTWAY TYPE 2 ON DRAWING No. HCC11/C/045.
5. DUCTS DESIGNATED FOR ELECTRICITY USE SHALL NOT PASS THROUGH THE DRAWPIT. WHERE ELECTRICITY DUCT IS TAKEN DIRECTLY TO A POWER SUPPLY PILLAR THE COLOUR OF THE DUCT SHALL BE ORANGE.
6. COVERS SHALL NOT INCLUDE SCREWS, FIXINGS OR SCREW HOLES.

REV	AMENDMENTS	DATE	CAD	CHKD	APPD

CONSULTANT

STUART JARVIS BSc DipTP FCIHT MRTPI DIRECTOR OF ECONOMY, TRANSPORT & ENVIRONMENT

SCHEME

STANDARD DETAILS

DRAWING TITLE

DETAILS OF TRAFFIC SIGNAL CONTROLLER CHAMBERS TYPES A & B

HCC CADplot: 25.Feb.2020 at 9:01pm					
DRAWN	MC	CHECKED	JM	SCALE @ A3	N.T.S
CAD	MC	APPROVED	AG	DATE	March 2020
DRG No.	HCC11/T/025				REVISION

Copyright Hampshire County Council. 2019

All rights, including translation, reserved. No part of this publication may be reproduced, stored in a retrieval system, or transmitted in any form or by any means (electronic, mechanical, photocopied, recorded or otherwise) without the prior written permission of Hampshire County Council. Requests should be directed to the Economy, Transport & Environment Department.