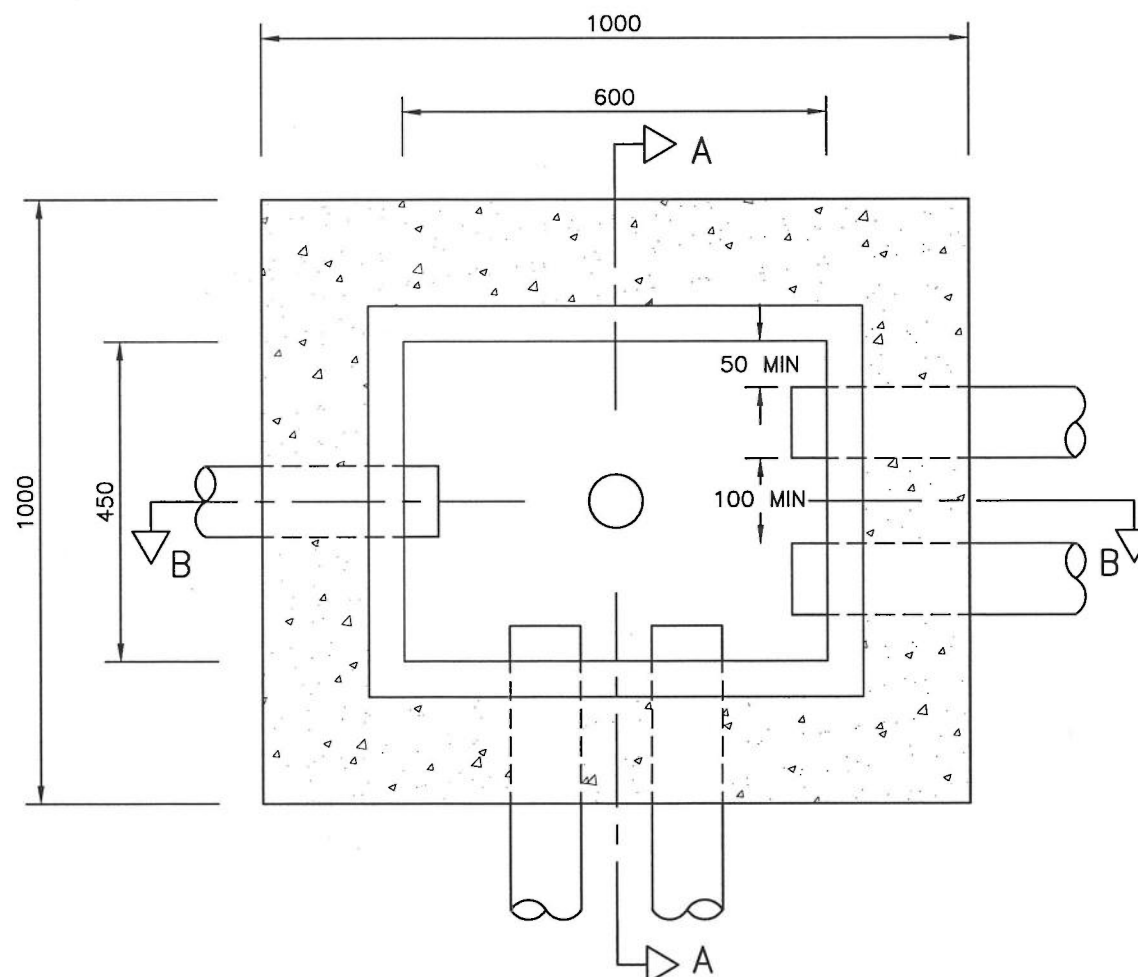


SECTION A-A

SECTION B-B



PLAN

(COVER AND FRAME OMITTED FOR CLARITY)

NOTES:

1. ALL DIMENSIONS ARE IN MILLIMETRES.
2. DUCTS SHALL BE ORANGE, HAVE AN INTERNALLY SMOOTH BORE AND LABELLED "TRAFFIC SIGNALS" AT MAXIMUM 1 METRE INTERVALS AND INSTALLED WITH DRAWCORDS.
3. INSPECTION COVERS SHALL BE MARKED WITH ONE OF THE FOLLOWING:- 'TRAFFIC SIGNALS' 'TRAFFIC LIGHTS' 'SIGNALS' 'H.C.C. SIGNALS' 'U.T.C.'
LETTER HEIGHT 40 TO 100.
RECESSED AND INFILLED COVERS SHALL NOT BE USED.
4. DUCTS AT DEPTH SHALL BE BROUGHT UP TO THE DRAWPIT USING A SINGLE EASY BEND OF MINIMUM 1 METRE RADIUS.
5. DEPTH OF DRAWPIT SHALL BE DICTATED BY DEPTH OF THE DEEPEST DUCT ENTERING THE DRAWPIT. (COVER TO CARRIAGEWAY DUCTS SHALL BE 600 MIN., COVER TO VERGE DUCTS SHALL BE 450 MIN.) WHERE THE NUMBER OF DUCTS SPECIFIED CANNOT BE ARRANGED AT ONE DEPTH, THE DEPTH OF THE DRAWPIT SHALL BE INCREASED SUCH THAT THE VERTICAL CLEARANCE BETWEEN THE DUCT LAYERS IS 100 MIN. THE MAXIMUM DRAWPIT DEPTH SHALL NOT EXCEED 1200 TO THE UNDERSIDE OF THE CONCRETE SLAB.
6. FOR DETAILS OF INSTALLATION WITH CONTROLLER, SEE DRAWING NO. HCC11/T/025.
7. INSPECTION COVER (600 X 450) SHALL BE TO BS EN 124:2015 D400 - GROUP 4 AND HA 104/09. SEE APPENDIX 5/1 FOR FURTHER REQUIREMENTS.
8. WHERE THE DRAWPIT IS LOCATED BEHIND A VEHICULAR OR PEDESTRIAN RESTRAINT, OR IN CLOSE PROXIMITY TO A LIGHTING COLUMN OR SIGNAL POLE, A COVER AND FRAME TO BS EN 124:2015 C250 - GROUP 3 MAY BE USED.
9. AS AN ALTERNATIVE TO THE PRECAST CONCRETE UNITS ILLUSTRATED THE CONTRACTOR MAY CONSTRUCT THE DRAW PIT USING A PLASTIC UNIT, ALL AS DESCRIBED IN THE NOTES OPPOSITE.

PLASTIC UNIT ALTERNATIVE:

AS AN ALTERNATIVE TO THE PRECAST CONCRETE UNITS ILLUSTRATED THE CONTRACTOR MAY CONSTRUCT DRAWPIT TYPE 2 USING COMPLETE PLASTIC UNITS MANUFACTURED FROM RECYCLED POLYOLEFIN AND BEDDED ON AND SURROUNDED BY A MINIMUM 150 OF MIX ST4 CONCRETE.

SUCH CHAMBERS SHALL BE CONSTRUCTED STRICTLY IN ACCORDANCE WITH THE MANUFACTURERS INSTRUCTIONS AND PARTICULAR CARE SHALL BE TAKEN TO AVOID MOVEMENT OR DISTORTION OF THE PLASTIC UNIT DURING THE PLACING AND COMPACTION OF THE CONCRETE SURROUND.

THE CLEAR OPENING SHALL BE AS REQUIRED FOR THE P.C.C. CHAMBER CONSTRUCTION.

ALL CHAMBERS CONSTRUCTED WITHIN 2500 OF THE EDGE OF THE CARRIAGEWAY SHALL BE FITTED WITH A COVER AND FRAME AS SPECIFIED IN NOTE 5.

NOTES (CONTINUED)

10. ALL CEMENT USED IN INSITU CONCRETE SHALL BE CII(A OR B)-S OR CIII A OR B TO BS 8500-2, TABLE 1 AND ANNEX A.

Copyright Hampshire County Council. 2019

All rights, including translation, reserved. No part of this publication may be reproduced, stored in a retrieval system, or transmitted in any form or by any means (electronic, mechanical, photocopied, recorded or otherwise) without the prior written permission of Hampshire County Council. Requests should be directed to the Economy, Transport & Environment Department.

REV	AMENDMENTS	DATE	CAD	CHKD	APPD

CONSULTANT

STUART JARVIS BSc DipTP FCIBT MRTPI: DIRECTOR OF ECONOMY, TRANSPORT & ENVIRONMENT

SCHEME

STANDARD DETAILS

DRAWING TITLE

TRAFFIC SIGNAL DRAWPIT TYPE 2

HCC CADplot: 25.Feb.2020 at 8:57pm		
DRAWN	CHECKED	SCALE @ A3
RB	JM <i>JM</i>	N.T.S
CAD	APPROVED	DATE
RB	AG <i>AG</i>	March 2020
DRG No.	REVISION	
HCC11/T/015		