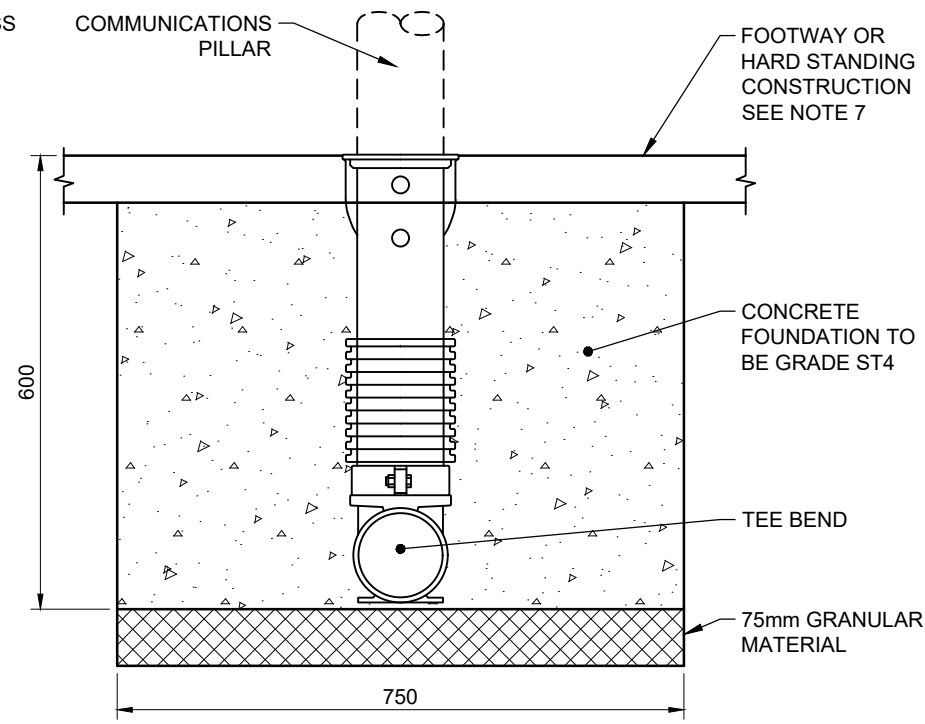
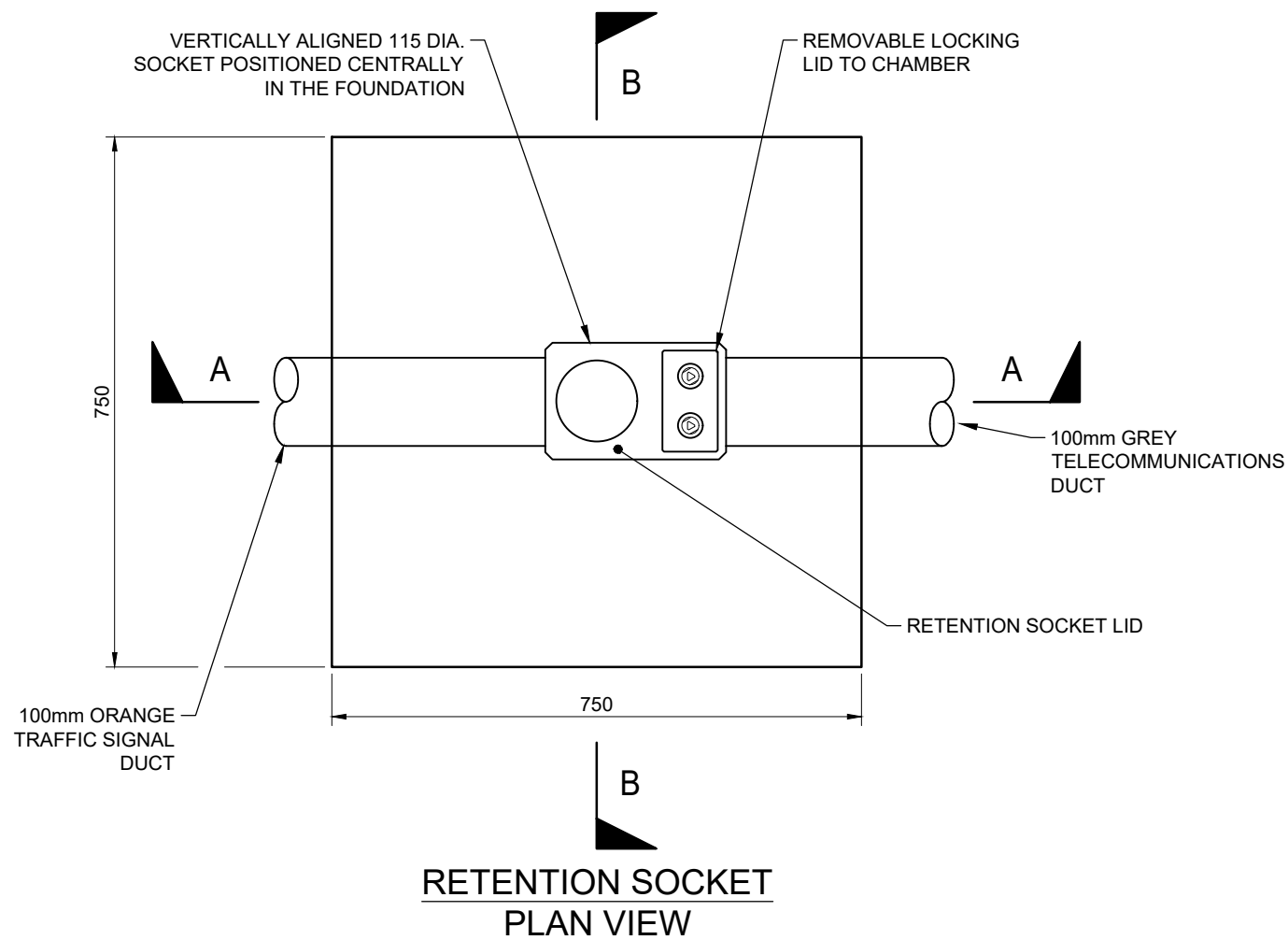


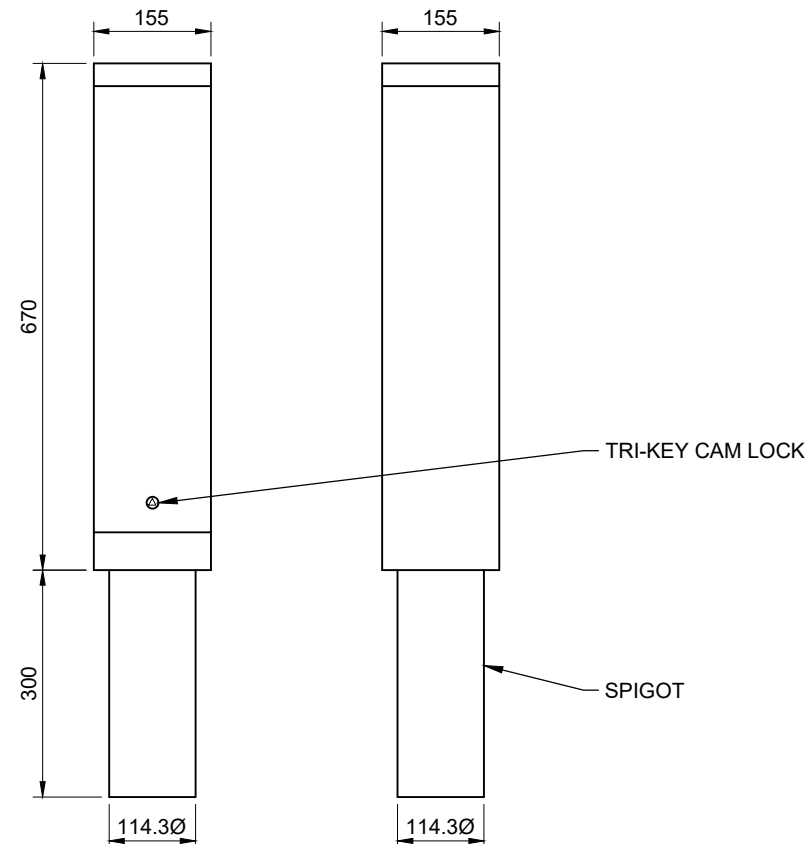
RETENTION SOCKET SECTION A-A



RETENTION SOCKET SECTION B-B



RETENTION SOCKET PLAN VIEW

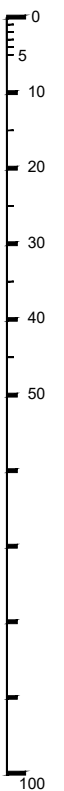


PILLAR FRONT VIEW

PILLAR SIDE VIEW

NOTES

1. DO NOT SCALE FROM THIS DRAWING.
2. ALL DIMENSIONS IN MILLIMETRES UNLESS OTHERWISE STATED.
3. PILLARS TO BE MANUFACTURED FROM 2mm STAINLESS STEEL. THE PILLAR SHALL BE EXTERNALLY FINISHED WITH EITHER A NATURAL FINISH OR A SMOOTH GLOSS POLYESTER POWDER COATED FINISH TO BS EN 12206-1:2004 IN COLOUR BLACK RAL 9005.
4. PILLARS TO BE SUPPLIED WITH A PLYWOOD BACKBOARD FOR THE FITTING OF TELECOMMUNICATIONS EQUIPMENT.
5. PILLARS TO BE FITTED WITH A TRI-KEY CAM-LOCK.
6. PILLARS TO BE MANUFACTURED WITH A 300mm LONG, 114.3mm DIAMETER SPIGOT.
7. WHERE THE PILLAR IS TO BE INSTALLED WITHIN A GRASS VERGE THE CONCRETE FOUNDATION SHALL BE BROUGHT UP TO FINISHED GROUND LEVEL UNLESS SPECIFIED ELSEWHERE. MINIMUM WIDTH HARD STANDING SURROUND TO BE 900mm AROUND THE PILLAR.
8. RETENTION SOCKETS SHOULD BE INSTALLED IN ACCORDANCE WITH THE MANUFACTURERS INSTRUCTIONS.
9. THE CONTRACTOR SHALL PROVE TO A HCC ENGINEER THAT THE SOCKET IS VERTICALLY ALIGNED.
10. THE CONTRACTOR IS TO INSTALL THE FEEDER PILLAR SPIGOT IN THE RETENTION SOCKET AND SECURE USING THE 2 LOCKING SCREWS TO ENSURE THE PILLAR CAN WITHSTAND A TURNING FORCE OF 3.4kNm THROUGH A LOAD OF 230kg.
11. A DRAW ROPE SHALL BE TAKEN FROM THE FEEDER PILLAR VOID TO THE CONTROLLER PLINTH VOID.
12. BT FEEDER PILLAR POSITION SHALL BE SET OUT BY OVERSEEING HCC ITS ENGINEER.
13. DUCT BETWEEN THE TRAFFIC SIGNAL CABINET AND PILLAR SHALL BE ORANGE, 100mm DIAMETER AND LABELLED 'TRAFFIC SIGNALS' AT 1m INTERVALS.



REV	AMENDMENTS	DATE	CAD	CHKD	APPD

CONSULTANT

TIM LAWTON BEng CEng FICE FCIHT : ASSISTANT DIRECTOR OF UNIVERSAL SERVICES

STANDARD DETAILS

TRAFFIC SIGNAL COMMUNICATIONS FEEDER PILLAR AND RETENTION SOCKET

NOTES CONTINUATION

14. DUCT BETWEEN THE PILLAR AND TELECOMMUNICATION ASSETS SHALL BE GREY, 100mm DIAMETER.
15. ALL ELEMENTS OF THIS DETAIL, INCLUDING THE COMMUNICATIONS PILLAR, ARE TO BE INSTALLED BY THE CIVILS CONTRACTOR.

DESIGNER	CHECKED	SCALE @ A3
BB	JM	N.T.S
CAD	APPROVED	DATE
CB	EB	FEB 2026
DRAWING NUMBER	REV	
HCC11/T/085		