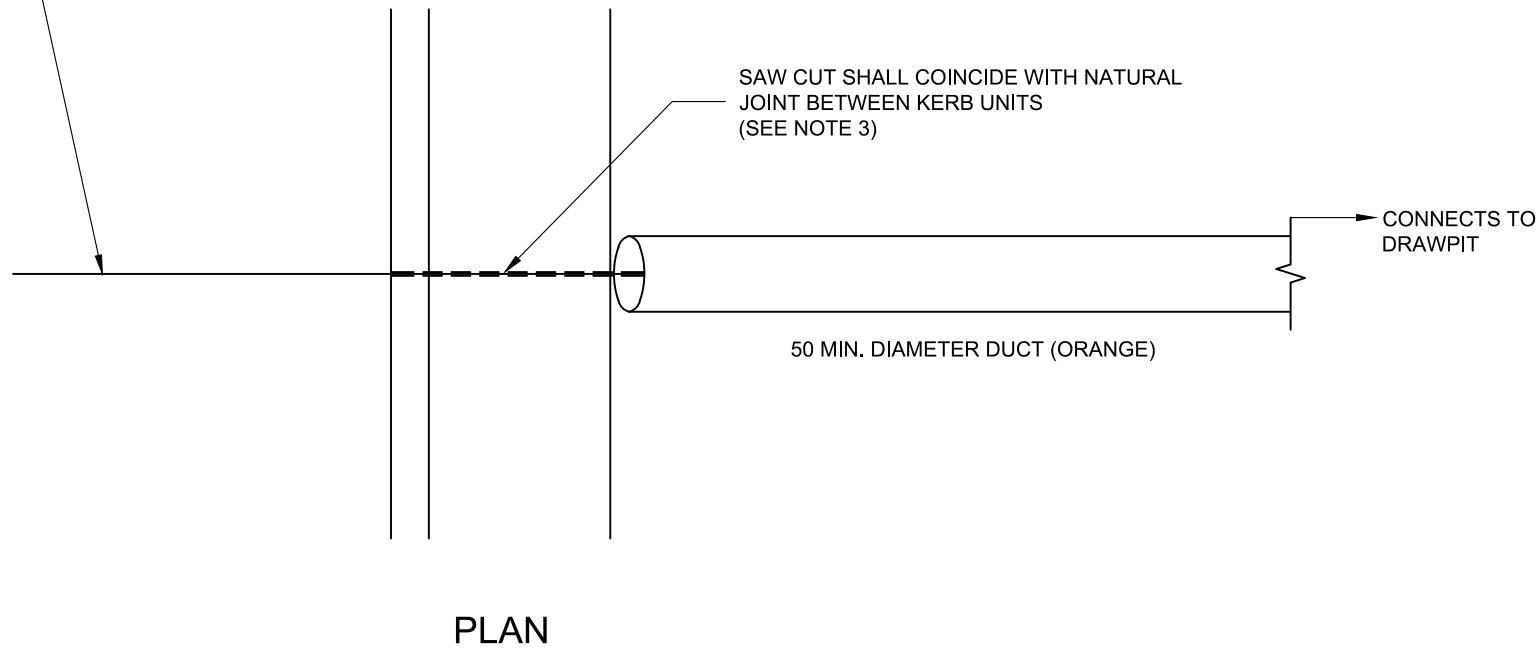


VEHICLE DETECTOR LOOP TAILS



PLAN

NOTES

1. ALL DIMENSIONS ARE IN MILLIMETRES.
2. WHERE DUCTS ARE INSTALLED IN ADVANCE OF THE VEHICLE DETECTOR LOOPS, THEIR POSITIONS SHALL BE MARKED ON-SITE BY AN APPROPRIATE METHOD AGREED WITH THE OVERSEEING ORGANISATON.
3. WHERE NO KERB EXISTS OR COMBINED KERB AND DRAINAGE UNITS ARE USED, REFER TO DRAWING HCC11/T/075.

A	BRANDING UPDATED	26.07.2022	CLT	WJ	ABG
REV	AMENDMENTS	DATE	CAD	CHKD	APPD

CONSULTANT




STUART JARVIS BSc DipTP FCIHT MRTPI: DIRECTOR OF ECONOMY, TRANSPORT & ENVIRONMENT

SCHEME

STANDARD DETAILS

DRAWING TITLE

DETAILS OF CONNECTION OF VEHICLE DETECTOR LOOP TO DRAWPIT

DESIGNER	CHECKED	SCALE @ A3
RB	JM JM	N.T.S
CAD	APPROVED	DATE
RB	ARG ARG	March 2020
DRAWING NUMBER	REV	
HCC11/T/050	A	

Copyright Hampshire County Council. 2022

All rights, including translation, reserved. No part of this publication may be reproduced, stored in a retrieval system, or transmitted in any form or by any means (electronic, mechanical, photocopied, recorded or otherwise) without the prior written permission of Hampshire County Council. Requests should be directed to the Economy, Transport & Environment Department.