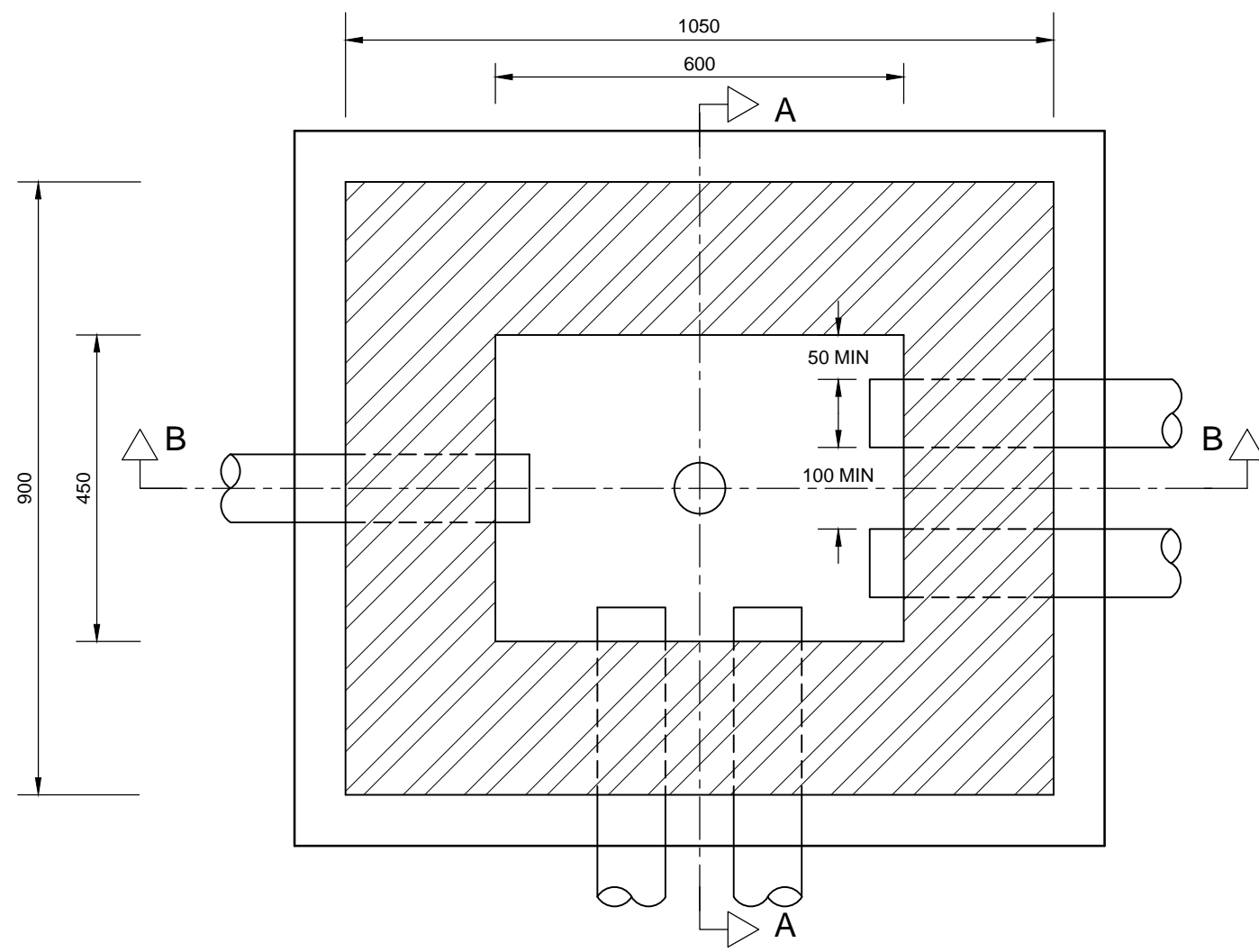


SECTION A-A

SECTION B-B

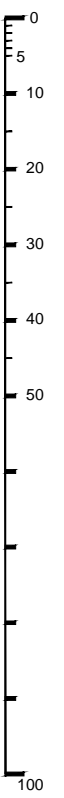


PLAN

(COVER AND FRAME OMITTED FOR CLARITY)

NOTES

1. ALL DIMENSIONS ARE IN MILLIMETRES.
2. DUCTS SHALL BE ORANGE, HAVE AN INTERNALLY SMOOTH BORE AND LABELLED "TRAFFIC SIGNALS" AT MAXIMUM 1 METRE INTERVALS AND INSTALLED WITH DRAWCORDS.
3. INSPECTION COVERS SHALL BE MARKED WITH ONE OF THE FOLLOWING:-
 - 'TRAFFIC SIGNALS'
 - 'TRAFFIC LIGHTS'
 - 'SIGNALS'
 - 'H.C.C SIGNALS'
 - 'U.T.C.'
 LETTER HEIGHT 40 TO 100.
 RECESSED AND INFILLED COVERS SHALL NOT BE USED.
4. DUCTS AT DEPTH SHALL BE BROUGHT UP TO THE DRAWPIT USING A SINGLE EASY BEND OF MINIMUM 1 METRE RADIUS.
5. DEPTH OF DRAWPIT SHALL BE DICTATED BY DEPTH OF THE DEEPEST DUCT ENTERING THE DRAWPIT. (COVER TO CARRIAGEWAY DUCTS SHALL BE 600 MIN., COVER TO VERGE DUCTS SHALL BE 450 MIN.) WHERE THE NUMBER OF DUCTS SPECIFIED CANNOT BE ARRANGED AT ONE DEPTH, THE DEPTH OF THE DRAWPIT SHALL BE INCREASED SUCH THAT THE VERTICAL CLEARANCE BETWEEN THE DUCT LAYERS IS 100 MIN. THE MAXIMUM DRAWPIT DEPTH SHALL NOT EXCEED 1200 TO THE UNDERSIDE OF THE CONCRETE SLAB.
6. FOR DETAILS OF INSTALLATION WITH CONTROLLER, SEE DRAWING NO. HCC11/T/025.
7. INSPECTION COVER (600 X 450) SHALL BE TO BS EN 124:2015 D400 - GROUP 4 AND HA 104/09. SEE APPENDIX 5/1 FOR FURTHER REQUIREMENTS.
8. WHERE THE DRAWPIT IS LOCATED BEHIND A VEHICULAR OR PEDESTRIAN RESTRAINT, OR IN CLOSE PROXIMITY TO A LIGHTING COLUMN OR SIGNAL POLE, A COVER AND FRAME TO BS EN 124:2015 C250 - GROUP 3 MAY BE USED.
9. COVERS SHALL NOT INCLUDE SCREWS, FIXINGS OR SCREW HOLES.



| | | | | |
|-----|---|------------|-----|------|
| B | COPYRIGHT AMENDED AND NEW DIRECTORATE DETAILED. | 06.02.2023 | AM | ARG |
| A | BRANDING UPDATED. | 22.07.2022 | CLT | ARG |
| REV | AMENDMENTS | DATE | CAD | CHKD |

CONSULTANT

TIM LAWTON BEng CEng FICE FCIHT : ASSISTANT DIRECTOR OF UNIVERSAL SERVICES

SCHEME

STANDARD DETAILS

DRAWING TITLE

**TRAFFIC SIGNALS
DRAWPIT TYPE 2A
(BRICK ALTERNATIVE)**

| | | |
|----------------|-----------|------------|
| DESIGNER | CHECKED | SCALE @ A3 |
| RB | JM JM | N.T.S |
| CAD | APPROVED | DATE |
| RB | ARG ARG | March 2020 |
| DRAWING NUMBER | REV | |
| HCC11/T/020 | B | |

Copyright Hampshire County Council.

All rights, including translation, reserved. No part of this publication may be reproduced, stored in a retrieval system, or transmitted in any form or by any means (electronic, mechanical, photocopied, recorded or otherwise) without the prior written permission of Hampshire County Council. Requests should be directed to Hampshire Engineering Services.