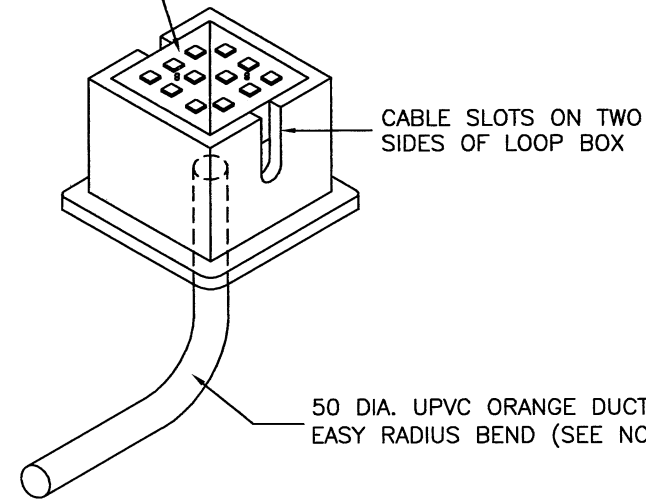
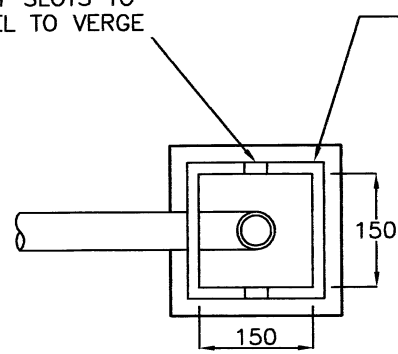


LOOP ENTRY SLOTS TO BE PARALLEL TO VERGE

DUCTILE IRON CABLE LOOP BOX TO BS 5834-2, GRADE A (SEE NOTE 4)



CARRIAGEWAY LOOP TAIL CHAMBER

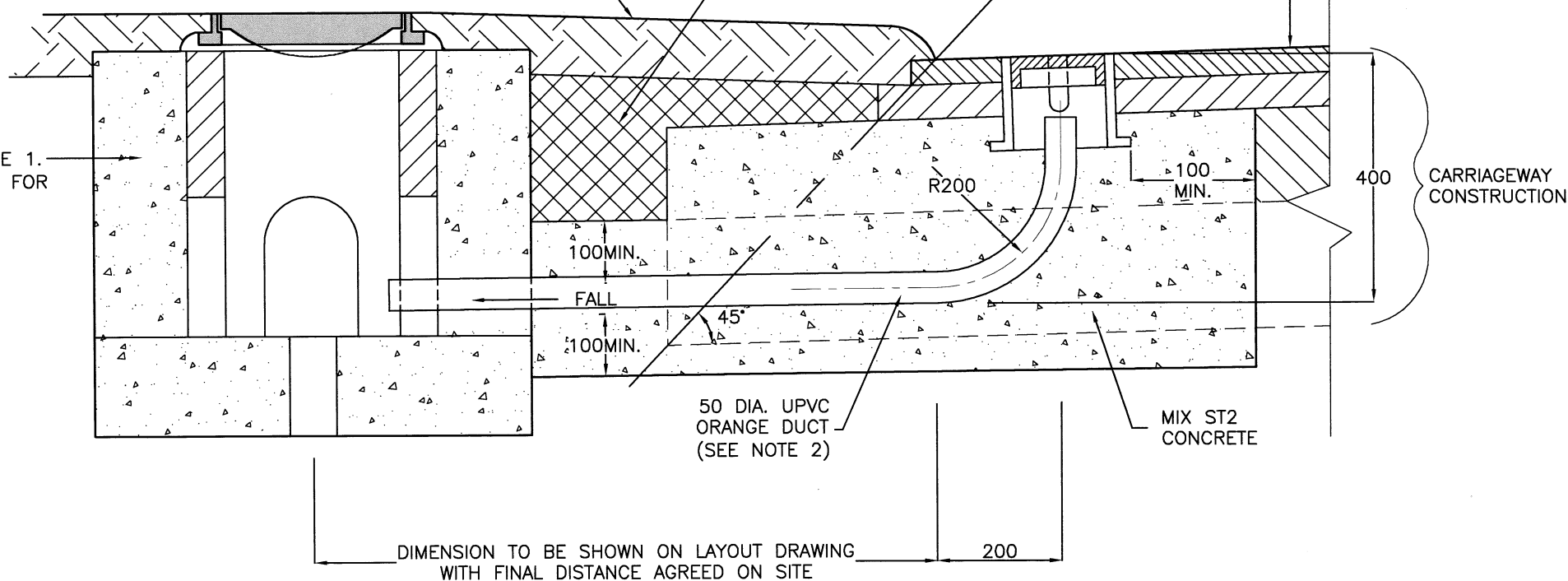
VERGE ← | → CARRIAGEWAY

REINSTATE VERGE WITH TOPSOIL TYPE 5A OR 5B 100 THICK TO SAME PROFILE AS ADJACENT VERGE AND SEED IN ACCORDANCE WITH CLAUSE 3005

COMPACTED SUBBASE TO CLAUSE 891AR, 892AR OR 893AR

CARRIAGEWAY SURFACE

TRAFFIC SIGNAL DRAWPIT TYPE 1. (SEE DRAWING HCC10/T/005 FOR FURTHER INFORMATION)



50 DIA. UPVC ORANGE DUCT (SEE NOTE 2)

MIX ST2 CONCRETE

DIMENSION TO BE SHOWN ON LAYOUT DRAWING WITH FINAL DISTANCE AGREED ON SITE

SECTION THROUGH VERGE/CARRIAGEWAY

NOTES:

1. ALL DIMENSIONS ARE IN MILLIMETRES
2. THIS DETAIL IS AN ALTERNATIVE TO THE DETAILS OF THE CONNECTION OF A VEHICLE DETECTOR LOOP SHOWN ON DRAWING HCC10/T/030 AND SHOULD ONLY BE USED WHERE NO KERB EXISTS OR WHERE COMBINED KERB DRAINAGE UNITS ARE TO BE INSTALLED.
3. DUCTS SHALL BE ORANGE 50 INTERNAL DIA. WITH SMOOTH BORE AND LABELLED "TRAFFIC SIGNALS" AT A MAXIMUM 1000 INTERVALS AND SHALL BE INSTALLED WITH A DRAWCORD.
4. CABLE LOOP BOX TO BE 150 x 150 CLEAR OPENING, 150 DEEP, WITH 2No. SLOTS FOR LOOP CABLE ACCESS. IT SHALL BE BADGED "TS" AND MANUFACTURED BY INTEGRATED DUCTING SYSTEMS OR SIMILAR EQUIVALENT.
5. THE ST2 CONCRETE SURROUND TO THE LOOP BOX SHALL BE A MINIMUM OF 100 THICK.
6. FOLLOWING INSTALLATION OF THE LOOP BOX AND HARDENING OF THE CONCRETE BACKFILL AND SURROUND, THE CARRIAGEWAY SURFACE AND BINDER COURSES ARE TO BE REINSTATED TO MATCH EXISTING AND THE VERGE IS TO BE REINSTATED AND SEEDED.

REV	AMENDMENTS	DATE	CAD	CHKD	APPD
CONSULTANT					
		STUART JARVIS BSc DipTP FCIHT MRTPI: DIRECTOR OF ECONOMY, TRANSPORT & ENVIRONMENT			
SCHEME					
STANDARD DETAILS					
DRAWING TITLE					
CARRIAGEWAY LOOP TAIL CHAMBER					
HCC CADplot: 18.Sep.2015 at 2:17pm					
DRAWN	CHECKED	SCALE @ A3			
RB	JM	N.T.S			
CAD	APPROVED	DATE		REVISION	
RB	CP	July 2015		-	
DRG No.	HCC10/T/050				REVISION
					-

Copyright Hampshire County Council. 2015

All rights, including translation, reserved. No part of this publication may be reproduced, stored in a retrieval system, or transmitted in any form or by any means (electronic, mechanical, photocopied, recorded or otherwise) without the prior written permission of Hampshire County Council. Requests should be directed to the Economy, Transport & Environment Department.