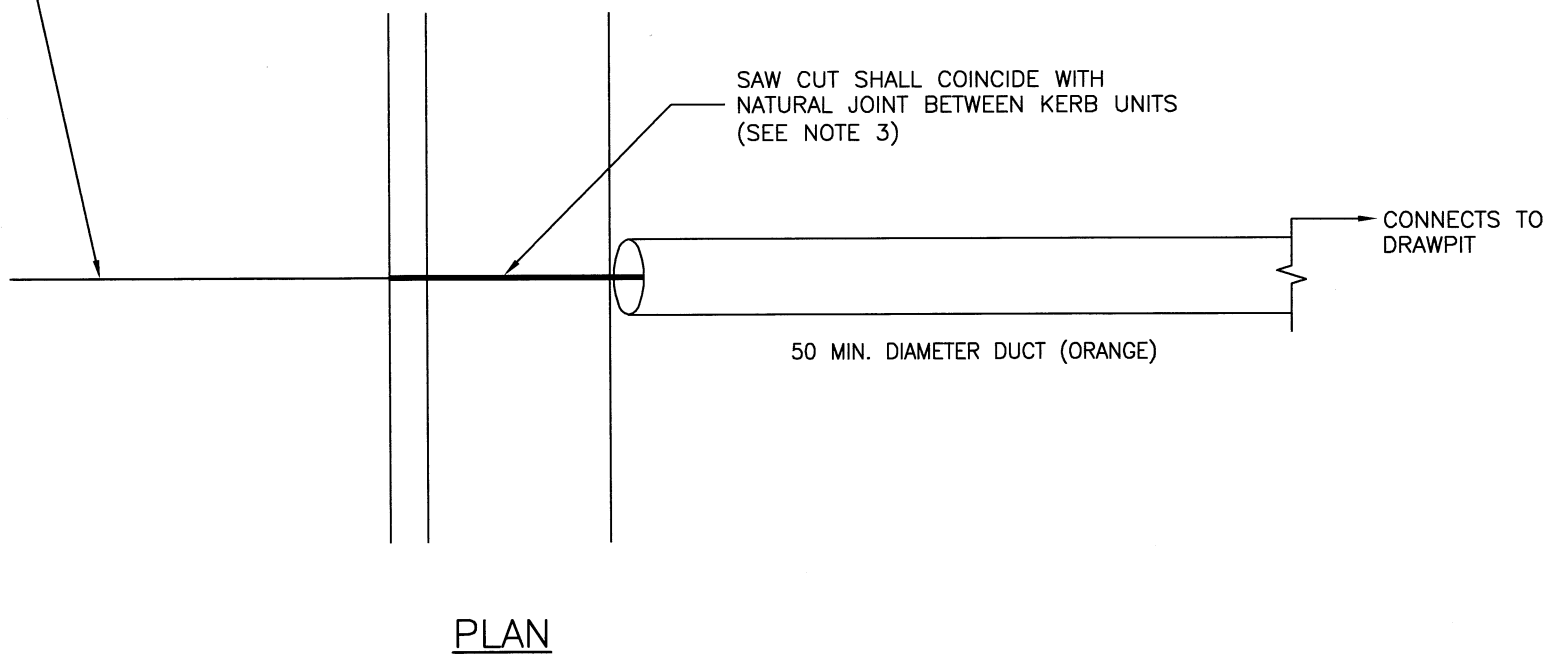


VEHICLE DETECTOR LOOP TAILS



NOTES:

1. ALL DIMENSIONS ARE IN MILLIMETRES.
2. WHERE DUCTS ARE INSTALLED IN ADVANCE OF THE VEHICLE DETECTOR LOOPS, THEIR POSITIONS SHALL BE MARKED ON-SITE BY AN APPROPRIATE METHOD AGREED WITH THE OVERSEEING ORGANISATION.
3. WHERE NO KERB EXISTS OR COMBINED KERB AND DRAINAGE UNITS ARE USED, REFER TO DRAWING HCC10/T/050.

REV	AMENDMENTS	DATE	CAD	CHKD	APPD
-	-	-	-	-	-

CONSULTANT

STUART JARVIS BSc DipTP FCIHT MRTPI: DIRECTOR OF ECONOMY, TRANSPORT & ENVIRONMENT

SCHEME

STANDARD DETAILS

DRAWING TITLE

DETAILS OF CONNECTION OF VEHICLE DETECTOR LOOP TO DRAWPIT

HCC CADplot: 18.Sep.2015 at 2:17pm		
DRAWN	CHECKED	SCALE @ A3
RB	JM <i>[Signature]</i>	N.T.S
CAD	APPROVED	DATE
RB	CP <i>[Signature]</i>	July 2015
DRG No.	REVISION	
HCC10/T/030	-	

Copyright Hampshire County Council. 2015

All rights, including translation, reserved. No part of this publication may be reproduced, stored in a retrieval system, or transmitted in any form or by any means (electronic, mechanical, photocopied, recorded or otherwise) without the prior written permission of Hampshire County Council. Requests should be directed to the Economy, Transport & Environment Department.