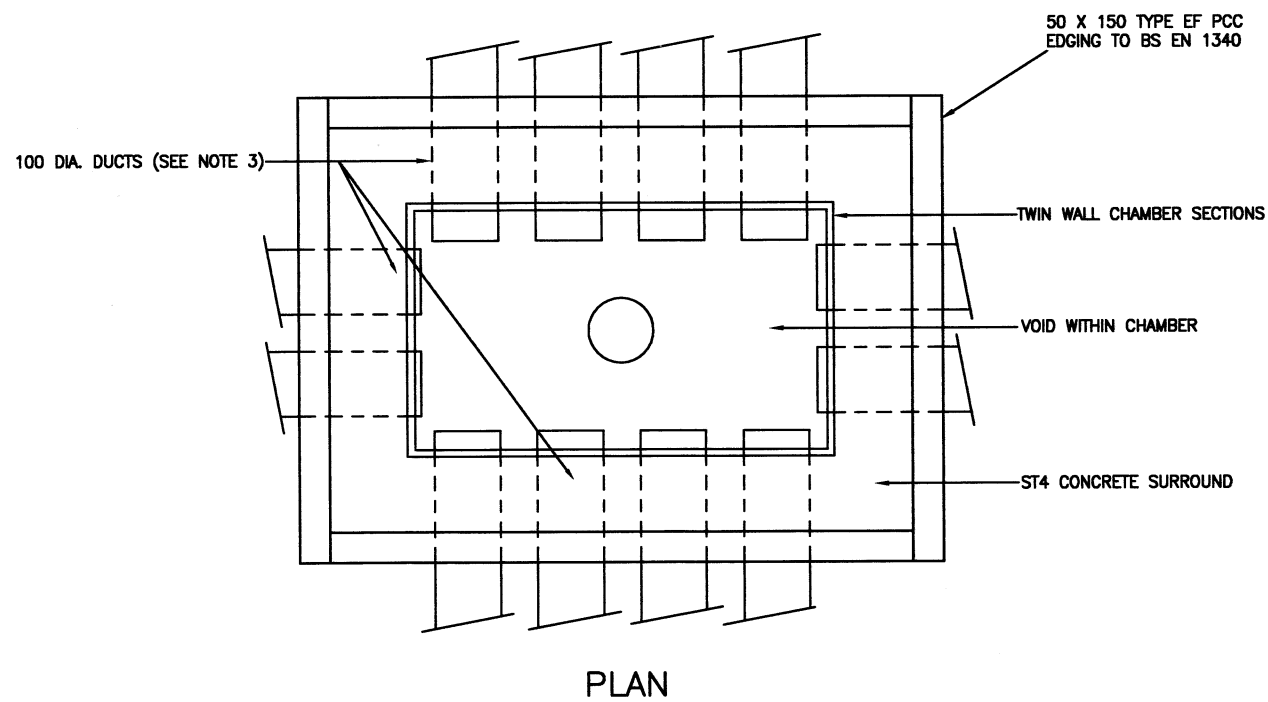


END ELEVATION

SIDE ELEVATION



PLAN

NOTES:

1. ALL DIMENSIONS ARE IN MILLIMETRES.
2. A THIRD PARTY SHALL SUPPLY THE CONTROLLER CABINET PLINTH AND CHAMBER SECTIONS TO THE MAIN CONTRACTOR. THE CHAMBER SECTIONS AND CONTROLLER CABINET PLINTH SHALL BE INSTALLED BY THE MAIN CONTRACTOR. THE CONTROLLER SHALL BE INSTALLED BY THE TRAFFIC SIGNAL CONTRACTOR.
3. THE NUMBER OF DUCTS INTO THE CHAMBER AND THEIR POSITIONS ARE DETAILED ON THE TRAFFIC SIGNAL LAYOUT DRAWING. THE NUMBER OF DUCTS AND THEIR LOCATIONS SHOWN ON THIS DRAWING ARE FOR INDICATIVE PURPOSES.
4. TRAFFIC SIGNAL CHAMBER  
TYPE C - AS SHOWN  
TYPE D - AS SHOWN BUT WITH 900 WIDTH OF HARDSTANDING ALL AROUND CONSTRUCTED AS FOOTWAY TYPE 2 ON DRAWING HCC10/C/045
5. DUCTS DESIGNATED FOR ELECTRICITY USE SHALL NOT PASS THROUGH THE CHAMBER.
6. 1 No. 100 DIA. ORANGE DUCT SHALL BE PROVIDED BETWEEN THE CHAMBER AND ADJACENT POWER SUPPLY PILLAR FOR THE MAIN ELECTRICITY SUPPLY. 1 No. 100 DIA. GREY DUCT SHALL PROVIDED FROM THE CHAMBER FOR A DISTANCE OF AT LEAST 1 METRE FOR TELECOMMUNICATIONS.

REV	AMENDMENTS	DATE	CAD	CHKD	APPD
-	-	-	-	-	-

CONSULTANT

**Hampshire County Council Engineering CONSULTANCY**

STUART JARVIS BSc DipTP FCIHT MRTPI: DIRECTOR OF ECONOMY, TRANSPORT & ENVIRONMENT

SCHEME

**STANDARD DETAILS**

DRAWING TITLE

**DETAILS OF TRAFFIC SIGNAL CONTROLLER CHAMBERS TYPES C & D**

HCC CADplot: 21.Sep.2015 at 8:41am		
DRAWN	CHECKED	SCALE @ A3
MC	JM	N.T.S
CAD	APPROVED	DATE
MC	CP	July 2015
DRG No.	REVISION	
HCC10/T/021	-	

Copyright Hampshire County Council. 2015

All rights, including translation, reserved. No part of this publication may be reproduced, stored in a retrieval system, or transmitted in any form or by any means (electronic, mechanical, photocopied, recorded or otherwise) without the prior written permission of Hampshire County Council. Requests should be directed to the Economy, Transport & Environment Department.