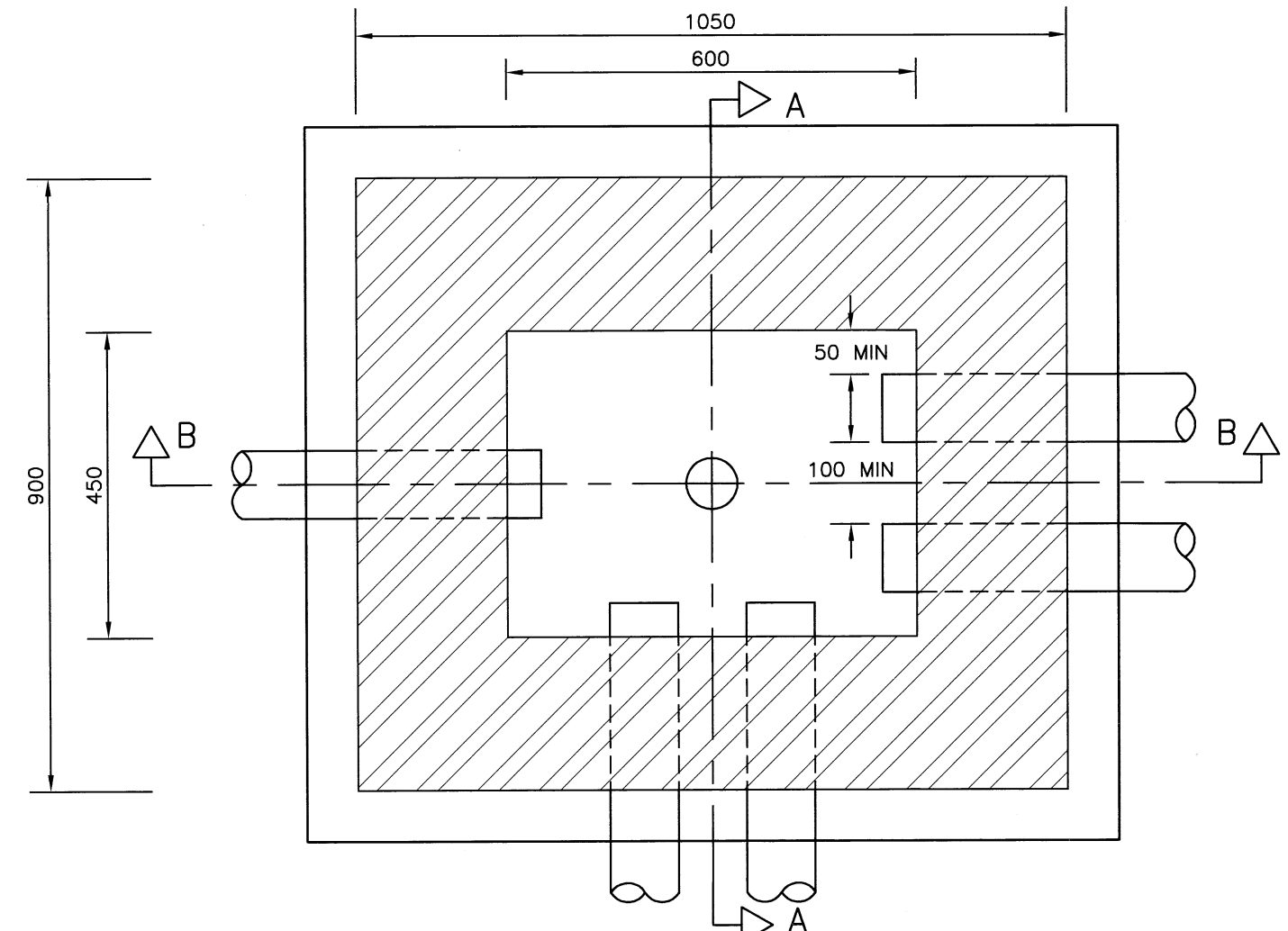


**SECTION A-A**  
 75 DIA DRAIN HOLE  
 INSITU BASE SLAB  
 MIX ST2 CONCRETE 150 THICK.

**SECTION B-B**



**PLAN**  
 (COVER AND FRAME OMITTED FOR CLARITY)

- NOTES:**
1. ALL DIMENSIONS ARE IN MILLIMETRES.
  2. DUCTS SHALL BE ORANGE, HAVE AN INTERNALLY SMOOTH BORE AND LABELLED "TRAFFIC SIGNALS" AT MAXIMUM 1 METRE INTERVALS AND INSTALLED WITH DRAWCORDS.
  3. INSPECTION COVERS SHALL BE MARKED WITH ONE OF THE FOLLOWING:-  
 'TRAFFIC SIGNALS'  
 'TRAFFIC LIGHTS'  
 'SIGNALS'  
 'H.C.C. SIGNALS'  
 'U.T.C.'  
 LETTER HEIGHT 40 TO 100.  
 RECESSED AND INFILLED COVERS SHALL NOT BE USED.
  4. DUCTS AT DEPTH SHALL BE BROUGHT UP TO THE DRAWPIT USING A SINGLE EASY BEND OF MINIMUM 1 METRE RADIUS.
  5. DEPTH OF DRAWPIT SHALL BE DICTATED BY DEPTH OF THE DEEPEST DUCT ENTERING THE DRAWPIT. (COVER TO CARRIAGEWAY DUCTS SHALL BE 600 MIN., COVER TO VERGE DUCTS SHALL BE 450 MIN.) WHERE THE NUMBER OF DUCTS SPECIFIED CANNOT BE ARRANGED AT ONE DEPTH, THE DEPTH OF THE DRAWPIT SHALL BE INCREASED SUCH THAT THE VERTICAL CLEARANCE BETWEEN THE DUCT LAYERS IS 100 MIN.
  6. FOR DETAILS OF INSTALLATION WITH CONTROLLER, SEE DRAWING NO. HCC9/T/020.
  7. INSPECTION COVER (600X450) SHALL BE BOTH TO BS EN 124 AND CERTIFIED BY A UKAS APPROVED THIRD PARTY ACCREDITATION BODY (EG. B.S.I.). CLASS D400 COVERS AND FRAMES SHALL BE USED WHERE VEHICLES MAY OVERRUN THE COVER. IF PROTECTED BY A SAFETY BARRIER, GUARD RAILING OR KERBS MIN. CLASS C250 COVERS AND FRAMES SHALL BE USED.
  8. COVERS SHALL NOT INCLUDE SCREWS, FIXINGS OR SCREW HOLES.

REV	AMENDMENTS	DATE	CAD	CHKD	APPD
-	-	-	-	-	-

CONSULTANT

STUART JARVIS BSc DipTP FCIHT MRTPI: DIRECTOR OF ECONOMY, TRANSPORT & ENVIRONMENT

SCHEME

**STANDARD DETAILS**

DRAWING TITLE

**TRAFFIC SIGNALS  
 DRAWPIT TYPE 2A  
 (BRICK ALTERNATIVE)**

HCC CADplot: 18.Sep.2015 at 2:16pm		
DRAWN	CHECKED	SCALE @ A3
RB	JM	N.T.S
CAD	APPROVED	DATE
RB	CP	July 2015
DRG No.	REVISION	
HCC10/T/015	-	

Copyright Hampshire County Council. 2015

All rights, including translation, reserved. No part of this publication may be reproduced, stored in a retrieval system, or transmitted in any form or by any means (electronic, mechanical, photocopied, recorded or otherwise) without the prior written permission of Hampshire County Council. Requests should be directed to the Economy, Transport & Environment Department.