

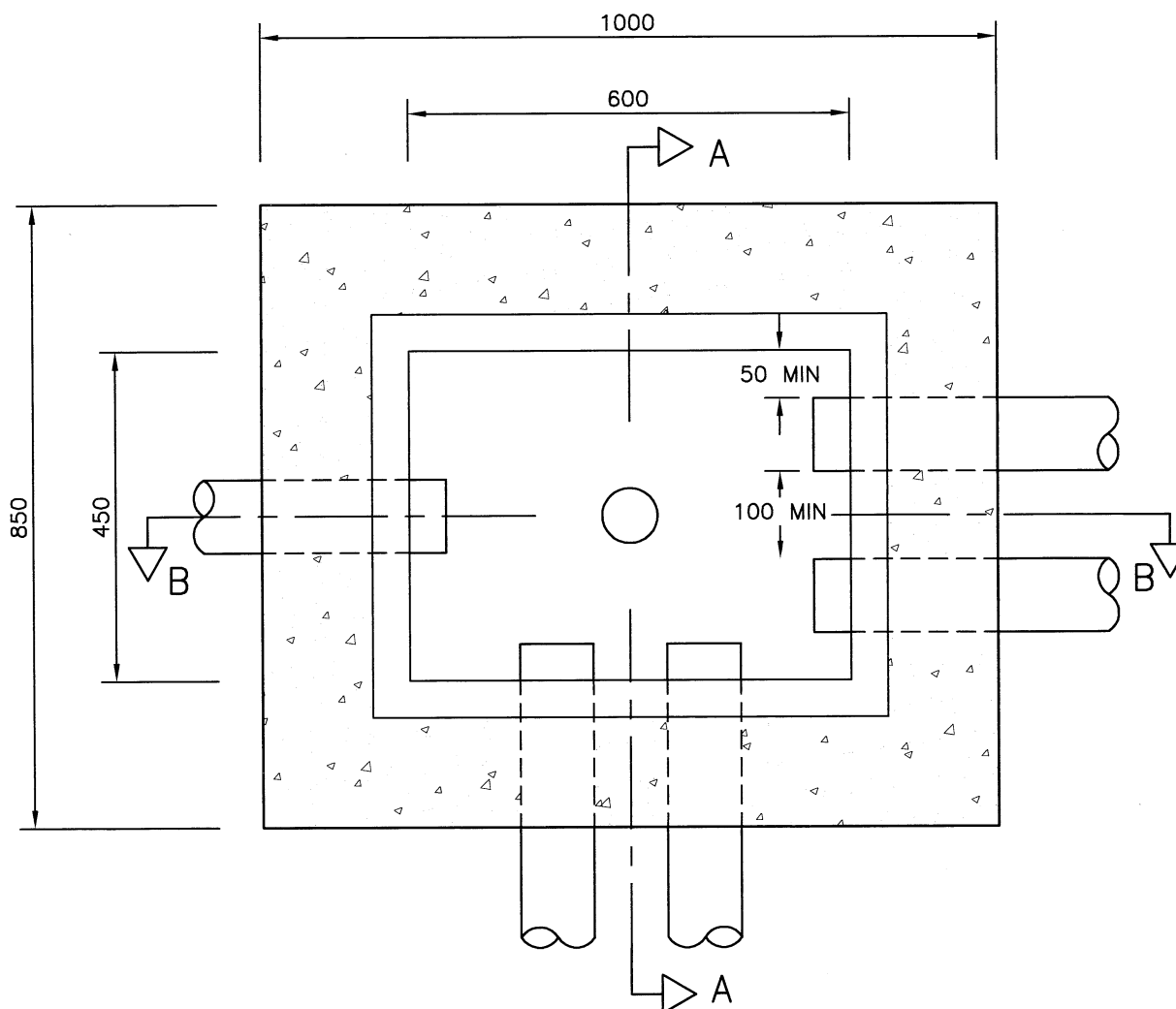
75 DIA DRAIN HOLE

PRECAST CONCRETE INTERLOCKING SECTIONS TO BS 5911-4 AND BS EN 1917 OF 50 MIN. THICKNESS (SEE NOTE 5)

MIX ST2 CONCRETE SURROUND

MIX ST2 CONCRETE BASE

SECTION B-B



PLAN

(COVER AND FRAME OMITTED FOR CLARITY)

NOTES:

1. ALL DIMENSIONS ARE IN MILLIMETRES.
2. DUCTS SHALL BE ORANGE, HAVE AN INTERNALLY SMOOTH BORE AND LABELLED "TRAFFIC SIGNALS" AT MAXIMUM 1 METRE INTERVALS AND INSTALLED WITH DRAWCORDS.
3. INSPECTION COVERS SHALL BE MARKED WITH ONE OF THE FOLLOWING:- 'TRAFFIC SIGNALS' 'TRAFFIC LIGHTS' 'SIGNALS' 'H.C.C. SIGNALS' 'U.T.C.'
LETTER HEIGHT 40 TO 100.
RECESSED AND INFILLED COVERS SHALL NOT BE USED.
4. DUCTS AT DEPTH SHALL BE BROUGHT UP TO THE DRAWPIT USING A SINGLE EASY BEND OF MINIMUM 1 METRE RADIUS.
5. DEPTH OF DRAWPIT SHALL BE DICTATED BY DEPTH OF THE DEEPEST DUCT ENTERING THE DRAWPIT. (COVER TO CARRIAGEWAY DUCTS SHALL BE 600 MIN., COVER TO VERGE DUCTS SHALL BE 450 MIN.) WHERE THE NUMBER OF DUCTS SPECIFIED CANNOT BE ARRANGED AT ONE DEPTH, THE DEPTH OF THE DRAWPIT SHALL BE INCREASED SUCH THAT THE VERTICAL CLEARANCE BETWEEN THE DUCT LAYERS IS 100 MIN.
6. FOR DETAILS OF INSTALLATION WITH CONTROLLER, SEE DRAWING NO. HCC10/T/020.
7. INSPECTION COVER (600X450) SHALL BE BOTH TO BS EN 124 AND CERTIFIED BY A UKAS APPROVED THIRD PARTY ACCREDITATION BODY (EG. B.S.I.). CLASS D400 COVERS AND FRAMES SHALL BE USED WHERE VEHICLES MAY OVERRUN THE COVER. IF PROTECTED BY A SAFETY BARRIER, GUARD RAILING OR KERBS MIN. CLASS C250 COVERS AND FRAMES SHALL BE USED.
8. AS AN ALTERNATIVE TO THE PRECAST CONCRETE UNITS ILLUSTRATED THE CONTRACTOR MAY CONSTRUCT THE DRAW PIT USING A PLASTIC UNIT, ALL AS DESCRIBED IN NOTE.
9. COVERS SHALL NOT INCLUDE SCREWS, FIXINGS OR SCREW HOLES.

PLASTIC UNIT ALTERNATIVE:

AS AN ALTERNATIVE TO THE PRECAST CONCRETE UNITS ILLUSTRATED THE CONTRACTOR MAY CONSTRUCT DRAWPIT TYPE 2 USING COMPLETE PLASTIC UNITS MANUFACTURED FROM RECYCLED POLYOLEFIN AND BEDDED ON AND SURROUNDED BY A MINIMUM 150 OF MIX ST4 CONCRETE. SUCH CHAMBERS SHALL BE CONSTRUCTED STRICTLY IN ACCORDANCE WITH THE MANUFACTURERS INSTRUCTIONS AND PARTICULAR CARE SHALL BE TAKEN TO AVOID MOVEMENT OR DISTORTION OF THE PLASTIC UNIT DURING THE PLACING AND COMPACTION OF THE CONCRETE SURROUND.

SUCH CHAMBERS CONSTRUCTED WITHIN 2500 OF THE EDGE OF THE CARRIAGEWAY SHALL BE FITTED WITH COVER AND FRAME AS SPECIFIED FOR THE P.C.C. UNIT ABOVE.

ALL COVER FRAMES SHALL BE BEDDED ON A MINIMUM 15mm OF POLYESTER RESIN SUPPORTED ON THE CONCRETE SURROUND AND NOT ON THE CHAMBER UNIT. CLEAR OPENING DIMENSIONS FOR THE COVERS SHALL BE AS SHOWN FOR P.C.C. UNITS.

Copyright Hampshire County Council. 2015

All rights, including translation, reserved. No part of this publication may be reproduced, stored in a retrieval system, or transmitted in any form or by any means (electronic, mechanical, photocopied, recorded or otherwise) without the prior written permission of Hampshire County Council. Requests should be directed to the Economy, Transport & Environment Department.

REV	AMENDMENTS	DATE	CAD	CHKD	APPD
-	-	-	-	-	-
CONSULTANT					
STUART JARVIS BSc DipTP FCILT MRTPI: DIRECTOR OF ECONOMY, TRANSPORT & ENVIRONMENT					
SCHEME					
STANDARD DETAILS					
DRAWING TITLE					
TRAFFIC SIGNAL DRAWPIT TYPE 2					
HCC CADplot: 18.Sep.2015 at 2:16pm					
DRAWN	CHECKED	SCALE @ A3			
RB	JM	N.T.S			
CAD	APPROVED	DATE		REVISION	
RB	CP	July 2015		-	
DRG No.		HCC10/T/010			

K:\Eng\Standard\AutoCAD\Standard Details (Secure) As Updated Dec 2011\2015 STANDARD DETAILS-NOT YET RELEASED\T-Series\T-010.dwg