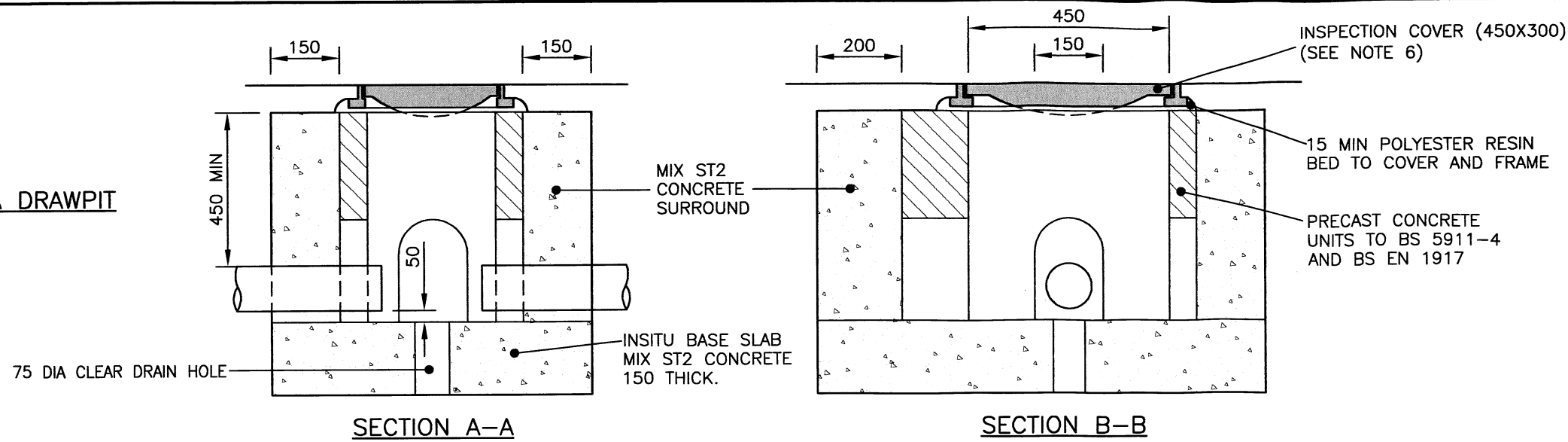


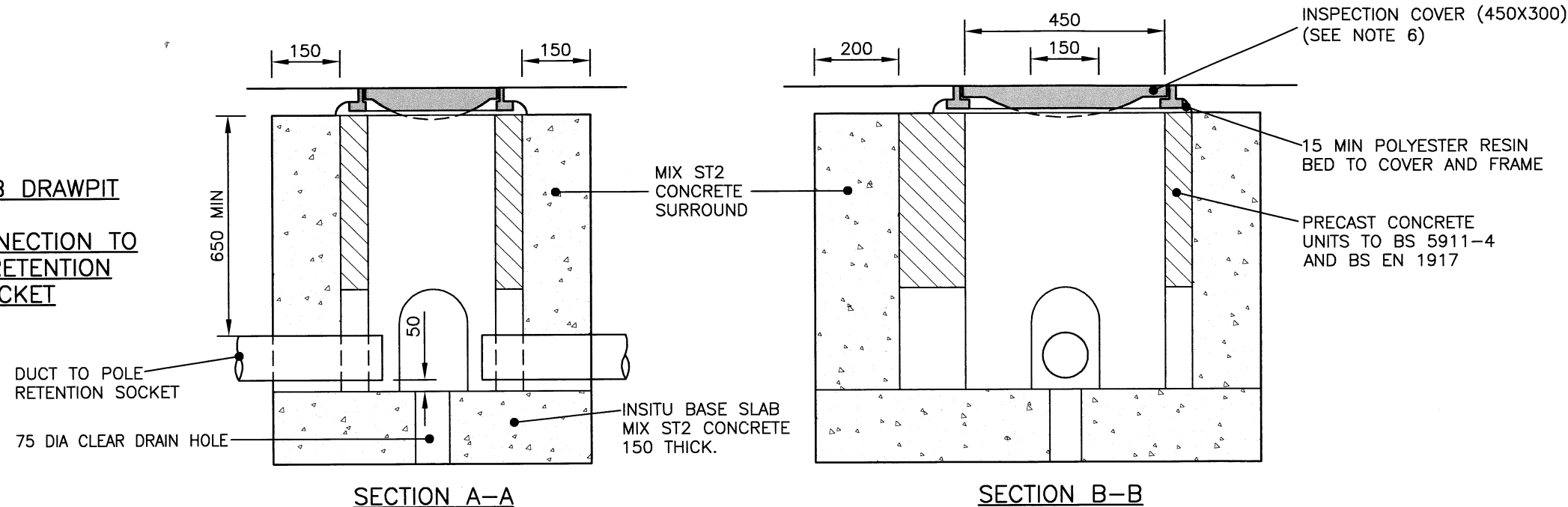
TYPE 1A DRAWPIT



SECTION A-A

SECTION B-B

**TYPE 1B DRAWPIT
FOR CONNECTION TO
POLE RETENTION
SOCKET**



SECTION A-A

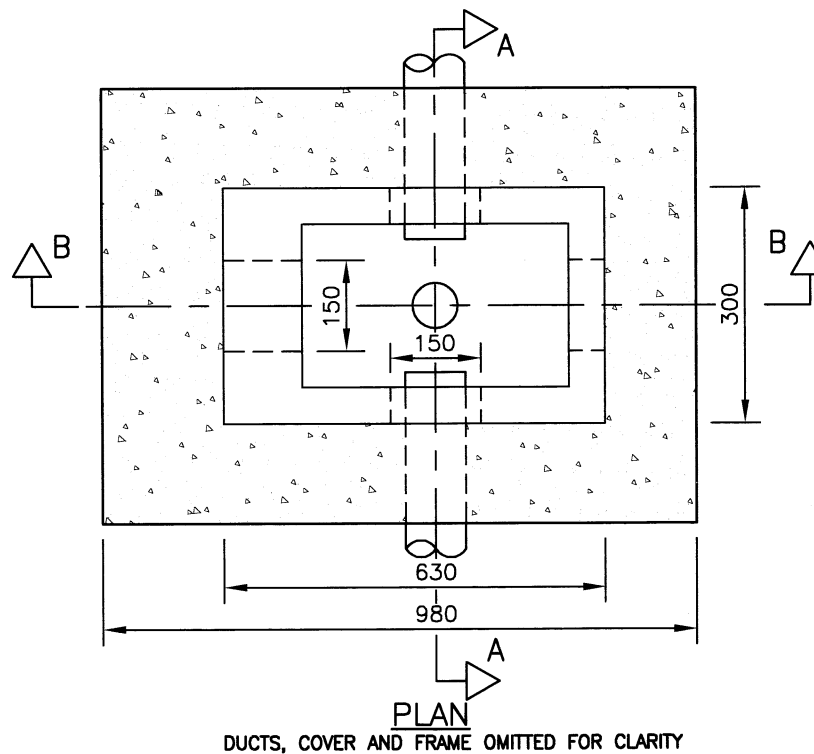
SECTION B-B

PLASTIC UNIT ALTERNATIVE:

AS AN ALTERNATIVE TO THE PRECAST CONCRETE UNITS ILLUSTRATED, THE CONTRACTOR MAY CONSTRUCT DRAWPIT TYPE 1A OR 1B USING COMPLETE PLASTIC UNITS MANUFACTURED FROM RECYCLED POLYOLEFIN AND BEDDED ON AND SURROUNDED BY A MINIMUM 150 OF MIX ST4 CONCRETE. SUCH CHAMBERS SHALL BE CONSTRUCTED STRICTLY IN ACCORDANCE WITH THE MANUFACTURER'S INSTRUCTIONS AND PARTICULAR CARE SHALL BE TAKEN TO AVOID MOVEMENT OR DISTORTION OF THE PLASTIC UNIT DURING THE PLACING AND COMPACTION OF THE CONCRETE SURROUND.

SUCH CHAMBERS CONSTRUCTED WITHIN 2500 OF THE EDGE OF THE CARRIAGEWAY SHALL BE FITTED WITH A COVER AND FRAME AS SPECIFIED FOR THE P.C.C. UNIT ABOVE.

ALL COVER FRAMES SHALL BE BEDDED ON A MINIMUM 15mm OF POLYESTER RESIN, SUPPORTED ON THE CONCRETE SURROUND AND NOT ON THE CHAMBER UNIT. CLEAR OPENING DIMENSIONS FOR THE COVERS SHALL BE AS SHOWN FOR P.C.C. UNITS.



PLAN
DUCTS, COVER AND FRAME OMITTED FOR CLARITY

NOTES:

- ALL DIMENSIONS ARE IN MILLIMETRES.
- DUCTS SHALL BE ORANGE, HAVE AN INTERNALLY SMOOTH BORE AND BE LABELLED "TRAFFIC SIGNALS" AT MAXIMUM 1 METRE INTERVALS. THEY SHALL BE INSTALLED WITH DRAWCORDS.
- INSPECTION COVERS SHALL BE MARKED WITH ONE OF THE FOLLOWING:-
"TRAFFIC SIGNALS"
"TRAFFIC LIGHTS"
"SIGNALS"
"HCC SIGNALS"
"UTC"

LETTER HEIGHT 40 TO 100.
RECESSED AND INFILLED COVERS SHALL NOT BE USED.
- DUCTS AT DEPTH SHALL BE BROUGHT UP TO THE DRAWPIT USING A SINGLE EASY BEND OF MINIMUM 1 METRE RADIUS.
- AS AN ALTERNATIVE TO THE PRECAST CONCRETE UNITS ILLUSTRATED, THE CONTRACTOR MAY CONSTRUCT THE DRAW PIT USING A PLASTIC UNIT, ALL AS DESCRIBED IN THE NOTE OPPOSITE.
- THE INSPECTION COVER (450X300) SHALL BE BOTH TO BS EN 124 AND CERTIFIED BY A UKAS APPROVED THIRD PARTY ACCREDITATION BODY (EG. B.S.I.). CLASS D400 COVERS AND FRAMES SHALL BE USED WHERE VEHICLES MAY OVERRUN THE COVER. IF PROTECTED BY A SAFETY BARRIER, GUARD RAILING OR KERBS MIN. CLASS C250 COVERS AND FRAMES SHALL BE USED.
- COVERS SHALL NOT INCLUDE SCREWS, FIXINGS OR SCREW HOLES.
- TYPE 1B DRAWPIT USED TO CONNECT TO POLE RETENTION SOCKET (SEE DRAWING HCC10/T/035).
- ORIENTATION AND NUMBER OF DUCTS MAY VARY ACCORDING TO THE SCHEME DRAWINGS.

REV	AMENDMENTS	DATE	CAD	CHKD	APPD
-	-	-	-	-	-

CONSULTANT

STUART JARVIS BSc DipTP FCIHT MRTPL DIRECTOR OF ECONOMY, TRANSPORT & ENVIRONMENT

SCHEME

STANDARD DETAILS

DRAWING TITLE

**TRAFFIC SIGNAL
DRAWPIT TYPE 1A & 1B**

HCC CADplot: 18.Sep.2015 at 2:16pm					
DRAWN	CHECKED	SCALE @ A3			
RB	JM	N.T.S			
CAD	APPROVED	DATE			
RB	CP	July 2015			
DRG No.	HCC10/T/005			REVISION	
				-	

Copyright Hampshire County Council. 2015
All rights, including translation, reserved. No part of this publication may be reproduced, stored in a retrieval system, or transmitted in any form or by any means (electronic, mechanical, photocopying, recorded or otherwise) without the prior written permission of Hampshire County Council. Requests should be directed to the Economy, Transport & Environment Department.