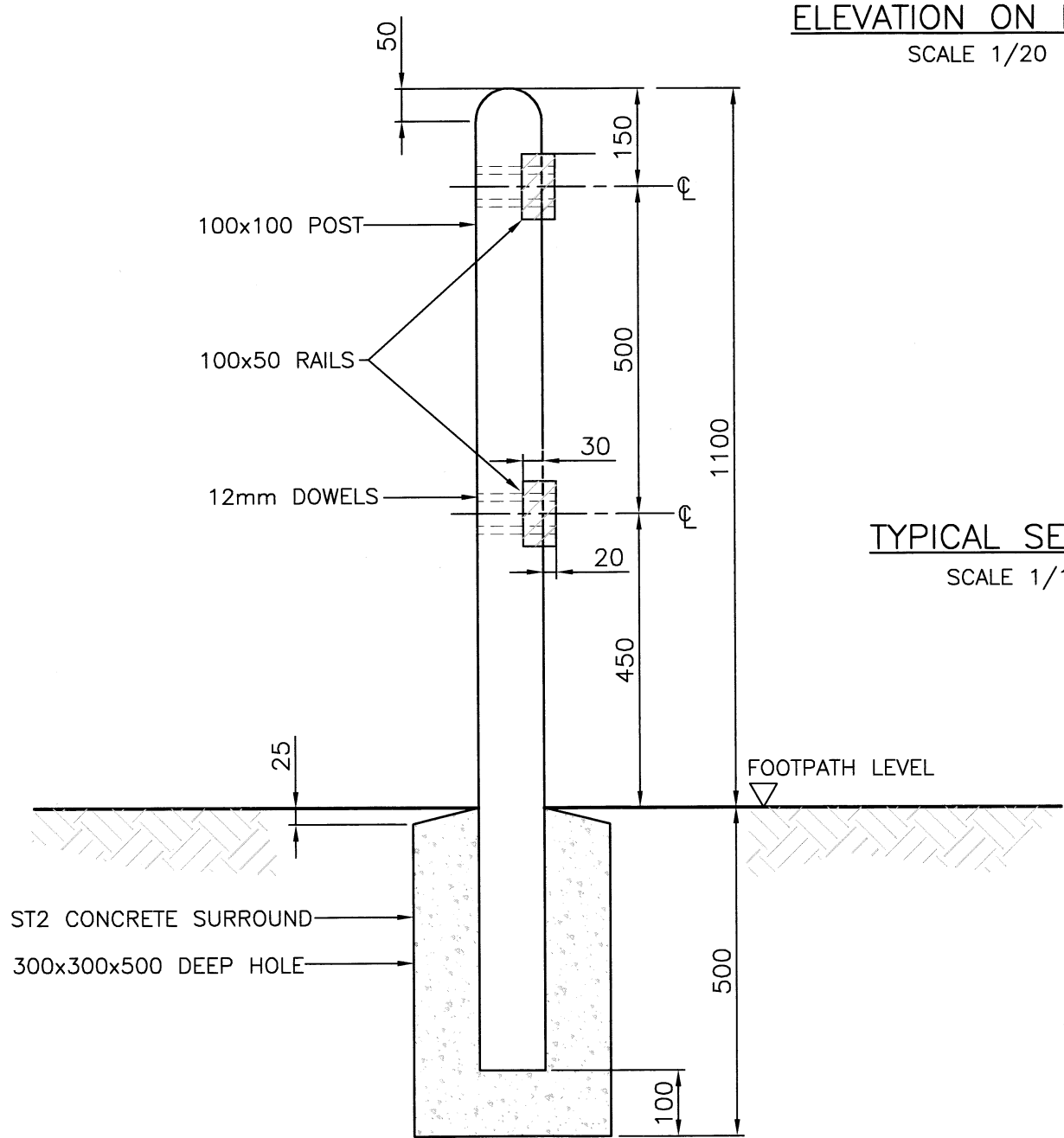


ELEVATION ON FENCE
SCALE 1/20



TYPICAL SECTION
SCALE 1/10

NOTES:

1. ALL DIMENSIONS ARE IN MILLIMETRES.
2. TIMBER SHALL BE TO BS 5268 PART 2, EITHER IROKO OR APPROVED EQUIVALENT TO BS 5756 OR IMPORTED DOUGLAS FIR OR APPROVED EQUIVALENT TO BS 4978.
3. SOFTWOOD TIMBER SHALL BE TREATED WITH 2 COATS OF SADOLIN, CLASS ANTIQUE PINE.
4. ALL SCARF JOINTS SHALL BE AT THE POSTS, GLUED USING A WATER RESISTANT GLUE AND DOWELLED USING DOWELS OF SIMILAR TIMBER. THERE SHALL BE SCARF JOINTS AT ALL INTERMEDIATE JOINTS.
5. THE POSTS SHALL BE ERECTED VERTICALLY.
6. RAILS SHALL BE FIXED ON THE ROAD SIDE OF THE POSTS UNLESS OTHERWISE SPECIFIED IN THE WORKS INFORMATION.
7. DIMENSION "L" SHALL BE NOT MORE THAN 2.5m AND ALL BAYS SHALL BE OF EQUAL LENGTH WHEREVER POSSIBLE.
8. DIMENSION "A" SHALL BE AS SPECIFIED IN THE WORKS INFORMATION.

REV	AMENDMENTS	DATE	CAD	CHKD	APPD
-	-	-	-	-	-

CONSULTANT



STUART JARVIS BSc DipTP FCIHT MRTPI: DIRECTOR OF ECONOMY, TRANSPORT & ENVIRONMENT

SCHEME

STANDARD DETAILS

DRAWING TITLE

2 RAIL TIMBER FENCE

HCC CADplot: 18.Sep.2015 at 2:16pm		
DRAWN	CHECKED	SCALE @ A3
WW	MT, MT	N.T.S
CAD	APPROVED	DATE
WW	CP	July 2015
DRG No.	REVISION	
HCC10/S/012	-	

Copyright Hampshire County Council. 2015
All rights, including translation, reserved. No part of this publication may be reproduced, stored in a retrieval system, or transmitted in any form or by any means (electronic, mechanical, photocopied, recorded or otherwise) without the prior written permission of Hampshire County Council. Requests should be directed to the Economy, Transport & Environment Department.