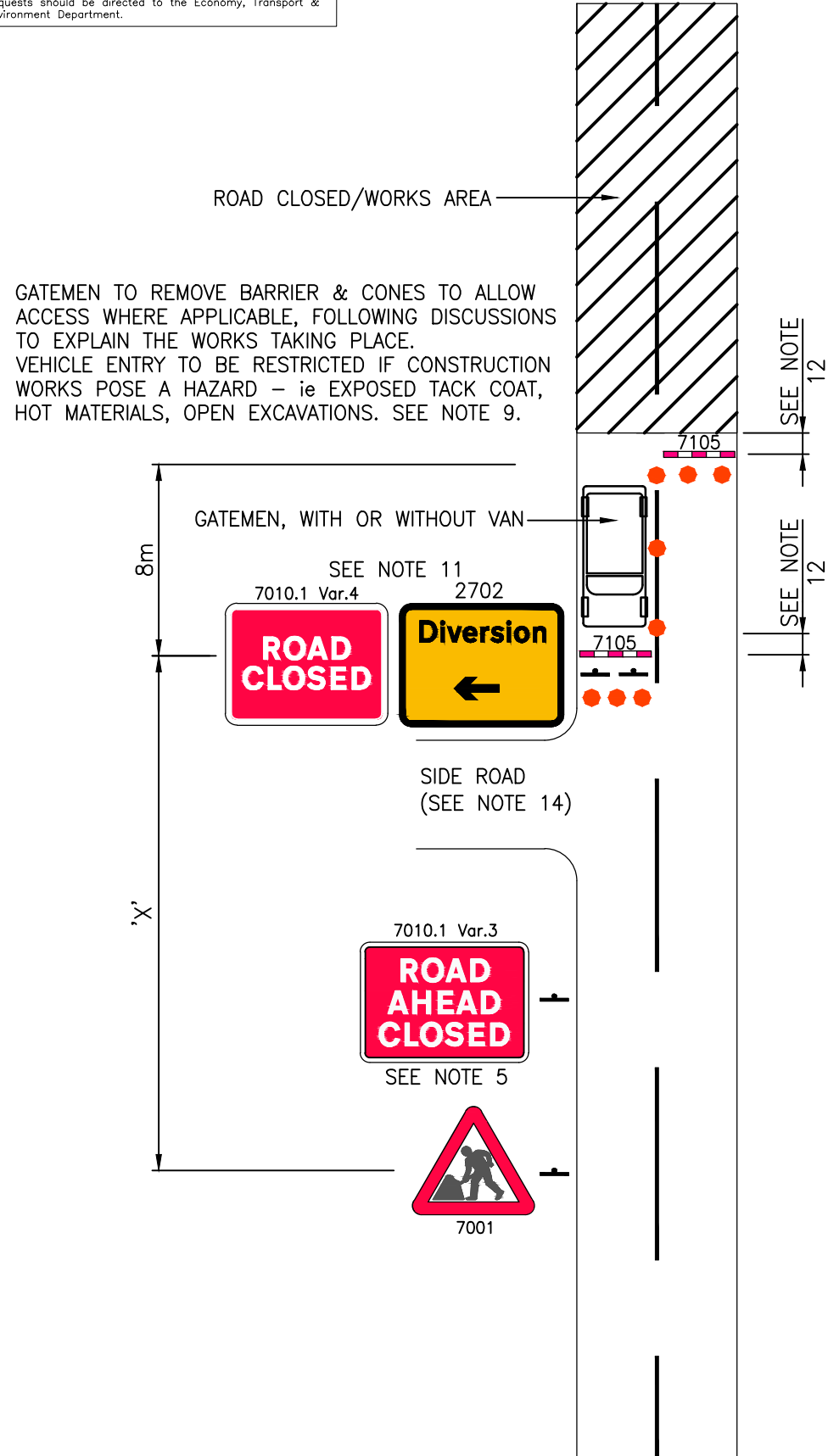


Copyright Hampshire County Council. 2019
 All rights, including translation, reserved. No part of this publication may be reproduced, stored in a retrieval system, or transmitted in any form or by any means (electronic, mechanical, photocopied, recorded or otherwise) without the prior written permission of Hampshire County Council. Requests should be directed to the Economy, Transport & Environment Department.



GATEMEN TO REMOVE BARRIER & CONES TO ALLOW ACCESS WHERE APPLICABLE, FOLLOWING DISCUSSIONS TO EXPLAIN THE WORKS TAKING PLACE. VEHICLE ENTRY TO BE RESTRICTED IF CONSTRUCTION WORKS POSE A HAZARD – ie EXPOSED TACK COAT, HOT MATERIALS, OPEN EXCAVATIONS. SEE NOTE 9.

DIMENSION 'X' IS DEPENDENT ON ROAD TYPE AND SPEED AND SHALL BE AS FOLLOWS:

- SINGLE CARRIAGEWAY >50mph, X = 275 TO 450 METRES
- SINGLE CARRIAGEWAY 31–40mph, X = 45 TO 110 METRES
- SINGLE CARRIAGEWAY 30mph, X = 20 TO 45 METRES

LEGEND

- TRAFFIC CONE (HEIGHT RELATED TO ROAD SPEED)
 450mm – UP TO 50mph
 750mm – GREATER THAN 50mph
- 7105 TEMPORARY BARRIER (RED & WHITE)
 (DURING HOURS OF DARKNESS, 7105 IS TO BE ILLUMINATED INTERNALLY OR EXTERNALLY OR REFLECTORISED)
- TRAFFIC SIGN (SIZE RELATED TO ROAD SPEED)
 600mm UP TO 30mph
 750mm GREATER THAN 30mph

NOTES:

1. ALL TRAFFIC MANAGEMENT SHALL COMPLY WITH THE TRAFFIC SIGNS MANUAL CHAPTER 8.
2. ALL SIGNS SHALL COMPLY WITH 'THE TRAFFIC SIGNS REGULATIONS AND GENERAL DIRECTIONS'.
3. ROAD CLOSURE TYPES 1 AND 2 ARE SHOWN ON DRAWING HCC10/M/300. THE SCHEME DRAWINGS ARE TO CONFIRM THE TYPE OF CLOSURE REQUIRED.
4. WARNING LIGHTS (ROAD DANGER LAMPS) SHALL BE AS PER CHAPTER 8 TRAFFIC SIGNS MANUAL D3.12 AND 04.7 WHERE THERE IS A REQUIREMENT TO USE WARNING LIGHTS DURING THE HOURS OF DARKNESS.
5. SIGN 7010.1 (ROAD AHEAD CLOSED) TO BE POSITIONED BETWEEN 0 AND 20 METRES BEHIND SIGN 7001.
6. SIGN 7010.1 (ROAD AHEAD CLOSED) TO BE USED PRIOR TO A JUNCTION IN FRONT OF THE ROAD CLOSURE.
7. ADVANCE WARNING OF A DIVERSION (SIGN 2702) MAY ALSO BE PLACED BEFORE A JUNCTION ALONGSIDE SIGN 7010.1 (ROAD AHEAD CLOSED).
8. WHERE SPECIFIED, GATEMEN ARE TO ADVISE WHEN MEMBERS OF THE PUBLIC CAN ENTER THE SITE IF APPLICABLE OR OF THE ALTERNATIVE ROUTE. GATEMEN ARE TO FACE THE ONCOMING TRAFFIC AND CAN UTILISE A VAN IF AVAILABLE. ALL GATEMEN ARE TO HAVE A COPY OF THE DIVERSION PLAN WHICH CAN BE USED TO ADVISE THE PUBLIC.
9. GATEMEN ARE TO LIAISE WITH THE TM OPERATIVES ON SITE AND THE WORKS SUPERVISOR SO THEY KNOW WHICH AREAS IF ANY ARE SAFE FOR PUBLIC ACCESS.
10. WHEN A MEMBER OF THE PUBLIC APPROACHES THE GATE, THE GATEMEN ARE TO ENQUIRE WHERE THE PUBLIC WISHES TO GAIN ACCESS TO. IF IT IS SAFE FOR THEM TO ENTER THE SITE THE GATEMEN ARE TO OPEN THE GATE, LET THE PUBLIC PAST AND CLOSE THE GATE.
11. ADDITIONAL 'ACCESS ONLY' SIGNS CAN BE ERECTED WHEN USING CLOSURE TYPES 2 OR 3.

REV	AMENDMENTS	DATE	CAD	CHKD	APPD

CONSULTANT

STUART JARVIS BSc DipTP FCIHT MRTPI: DIRECTOR OF ECONOMY, TRANSPORT & ENVIRONMENT

SCHEME

STANDARD DETAILS

DRAWING TITLE

**TYPICAL ROAD CLOSURE LAYOUT
TYPE 3
ACCESS ONLY WITH GATEMEN**

HCC CADplot: 28.Feb.2020 at 12:08pm					
DRAWN	WW	CHECKED	AH	SCALE @ A3	N.T.S
CAD	WW	APPROVED	SDG	DATE	March 2020
DRG No.	HCC11/M/305				REVISION

NOTES CONTINUED:

12. THE MINIMUM LENGTH BETWEEN THE WORKS AREA AND THE FIRST BARRIER IS TO BE THE SAFETY ZONE FOR THE SITE.
13. THE LOCATION OF ADJACENT JUNCTIONS IS INDICATIVE ONLY.
14. ON APPROACH TO THE CLOSURE FROM THE SIDE ROADS, SIGNS 7001, 7010.1 WITH THE INCLUSION OF SIGN 573 VAR. (DISTANCE OMITTED) ARE TO BE INSTALLED, ADVISING USERS OF THE CLOSURE AHEAD. SIGN SPACING DISTANCES AS SHOWN.

Use path: L:_Encl Standard AutoCAD Standard Details (Secure) Ac Updated Dec 2014\HCC11 3000 STANDARD DETAILS\M 305.dwg