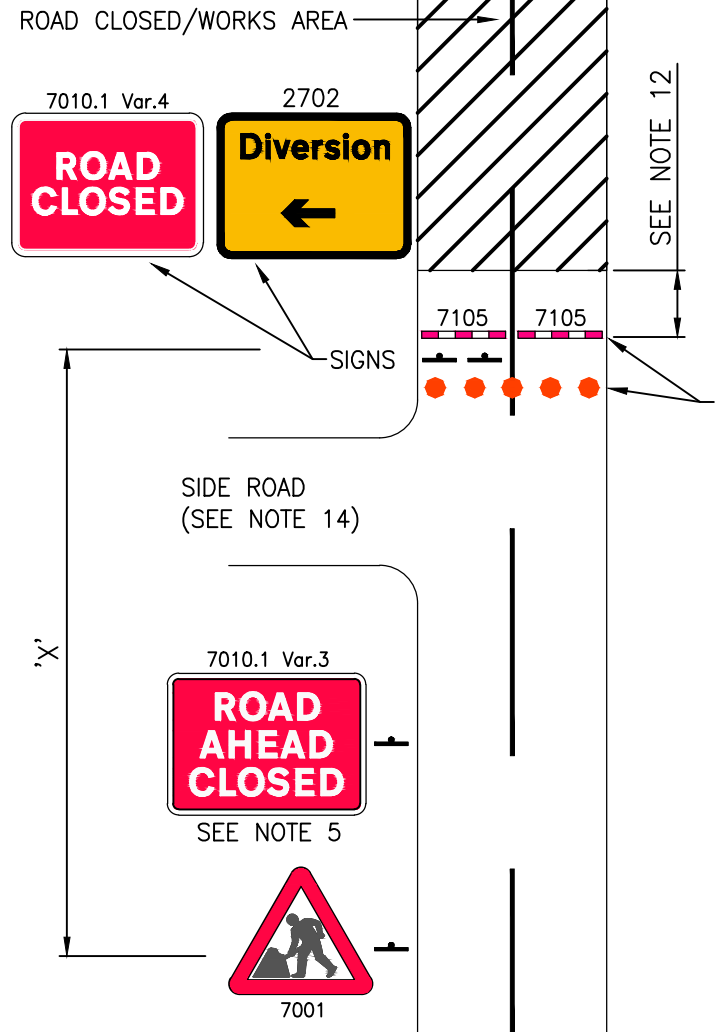


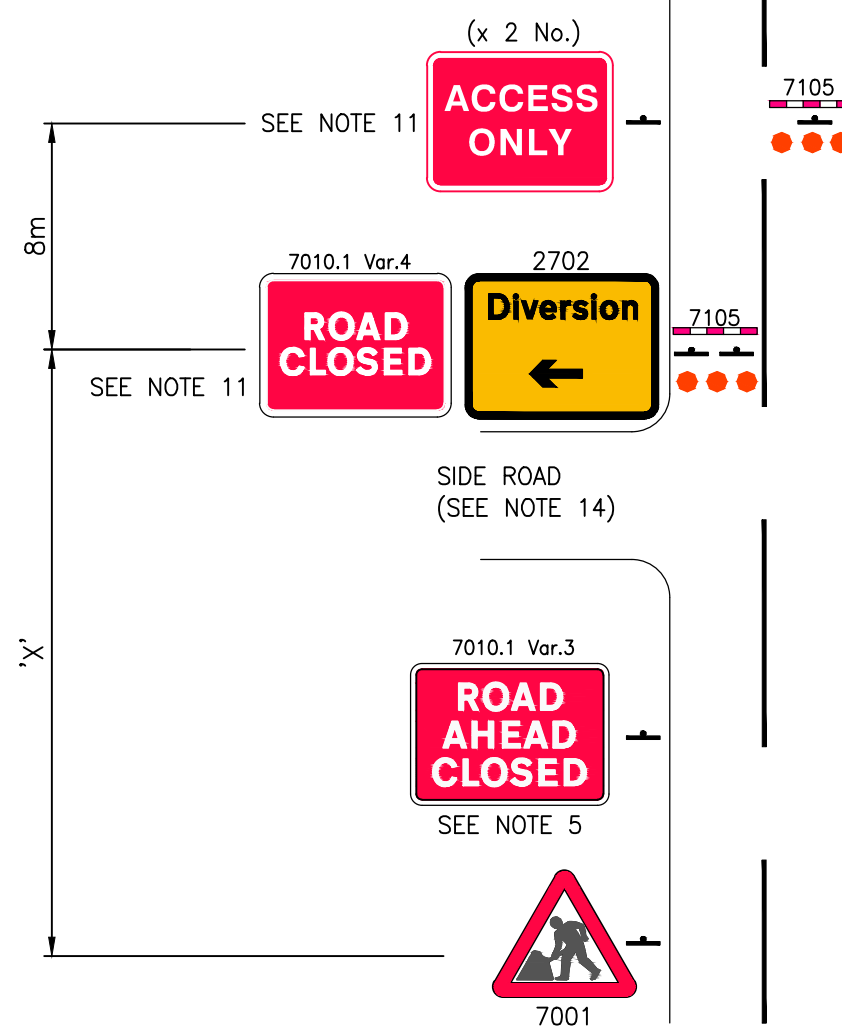
Copyright Hampshire County Council. 2019
 All rights, including translation, reserved. No part of this publication may be reproduced, stored in a retrieval system, or transmitted in any form or by any means (electronic, mechanical, photocopied, recorded or otherwise) without the prior written permission of Hampshire County Council. Requests should be directed to the Economy, Transport & Environment Department.

DIMENSION 'X' IS DEPENDENT ON ROAD TYPE AND SPEED AND SHALL BE AS FOLLOWS:

- SINGLE CARRIAGEWAY >50mph, X = 275 TO 450 METRES
- SINGLE CARRIAGEWAY 31-40mph, X = 45 TO 110 METRES
- SINGLE CARRIAGEWAY 30mph, X = 20 TO 45 METRES



**ROAD CLOSURE TYPE 1
(NO ACCESS)**



**ROAD CLOSURE TYPE 2
(ACCESS ONLY)
SEE NOTE 3**

- LEGEND**
- TRAFFIC CONE (HEIGHT RELATED TO ROAD SPEED)
 450mm - UP TO 50mph
 750mm - GREATER THAN 50mph
 - 7105 TEMPORARY BARRIER (RED & WHITE)
 (DURING HOURS OF DARKNESS, 7105 IS TO BE ILLUMINATED INTERNALLY OR EXTERNALLY OR REFLECTORISED)
 - TRAFFIC SIGN (SIZE RELATED TO ROAD SPEED)
 600mm UP TO 30mph
 750mm GREATER THAN 30mph

- NOTES CONTINUED:**
12. THE MINIMUM LENGTH BETWEEN THE WORKS AREA AND THE FIRST BARRIER IS TO BE THE SAFETY ZONE FOR THE SITE.
 13. THE LOCATION OF ADJACENT JUNCTIONS IS INDICATIVE ONLY.
 14. ON APPROACH TO THE CLOSURE FROM THE SIDE ROADS, SIGNS 7001, 7010.1 WITH THE INCLUSION OF SIGN 573 VAR. (DISTANCE OMITTED) ARE TO BE INSTALLED, ADVISING USERS OF THE CLOSURE AHEAD. SIGN SPACING DISTANCES AS SHOWN.

- NOTES:**
1. ALL TRAFFIC MANAGEMENT SHALL COMPLY WITH THE TRAFFIC SIGNS MANUAL CHAPTER 8.
 2. ALL SIGNS SHALL COMPLY WITH 'THE TRAFFIC SIGNS REGULATIONS AND GENERAL DIRECTIONS'.
 3. ROAD CLOSURE TYPE 2 IS ONLY TO BE USED WHEN TYPE 1 OR TYPE 3 ROAD CLOSURES ARE NOT SUITABLE AND ACCESS IS REQUIRED TO BE MAINTAINED. SCHEME DRAWING TO CONFIRM TYPE REQUIRED.
 4. WARNING LIGHTS (ROAD DANGER LAMPS) SHALL BE AS PER CHAPTER 8 TRAFFIC SIGNS MANUAL D3.12 AND 04.7 WHERE THERE IS A REQUIREMENT TO USE WARNING LIGHTS DURING THE HOURS OF DARKNESS.
 5. SIGN 7010.1 (ROAD AHEAD CLOSED) TO BE POSITIONED BETWEEN 0 AND 20 METRES BEHIND SIGN 7001.
 6. SIGN 7010.1 (ROAD AHEAD CLOSED) TO BE USED PRIOR TO A JUNCTION IN FRONT OF THE ROAD CLOSURE.
 7. ADVANCE WARNING OF A DIVERSION (SIGN 2702) MAY ALSO BE PLACED BEFORE A JUNCTION ALONGSIDE SIGN 7010.1 (ROAD AHEAD CLOSED).
 8. WHERE SPECIFIED, GATEMEN ARE TO ADVISE WHEN MEMBERS OF THE PUBLIC CAN ENTER THE SITE IF APPLICABLE OR OF THE ALTERNATIVE ROUTE. GATEMEN ARE TO FACE THE ONCOMING TRAFFIC AND CAN UTILISE A VAN IF AVAILABLE. ALL GATEMEN ARE TO HAVE A COPY OF THE DIVERSION PLAN WHICH CAN BE USED TO ADVISE THE PUBLIC.
 9. GATEMEN ARE TO LIAISE WITH THE TM OPERATIVES ON SITE AND THE WORKS SUPERVISOR SO THEY KNOW WHICH AREAS IF ANY ARE SAFE FOR PUBLIC ACCESS.
 10. WHEN A MEMBER OF THE PUBLIC APPROACHES THE GATE, THE GATEMEN ARE TO ENQUIRE WHERE THE PUBLIC WISHES TO GAIN ACCESS TO. IF IT IS SAFE FOR THEM TO ENTER THE SITE THE GATEMEN ARE TO OPEN THE GATE, LET THE PUBLIC PAST AND CLOSE THE GATE.
 11. ADDITIONAL 'ACCESS ONLY' SIGNS CAN BE ERECTED WHEN USING CLOSURE TYPES 2 OR 3.

REV	AMENDMENTS	DATE	CAD	CHKD	APPD

CONSULTANT

Hampshire Engineering
 County Council CONSULTANTS

STUART JARVIS BSc DipTP FCIHT MRTPI: DIRECTOR OF ECONOMY, TRANSPORT & ENVIRONMENT

SCHEME

STANDARD DETAILS

DRAWING TITLE

**TYPICAL ROAD CLOSURE LAYOUT
TYPES 1 & 2
NO ACCESS/ACCESS ONLY**

HCC CADplot: 28.Feb.2020 at 12:07pm

DRAWN	CHECKED	SCALE @ A3
WW	AH, AH	N.T.S
CAD	APPROVED	DATE
WW	SDG, SDG	March 2020
DRG No.	REVISION	
HCC11/M/300		

UNC PARTIAL: L:_Encl Standard AutoCAD Standard Detail (Scheme) Ac Updated Dec 2014\HCC11 2020 STANDARD DETAILS\M 300.dwg