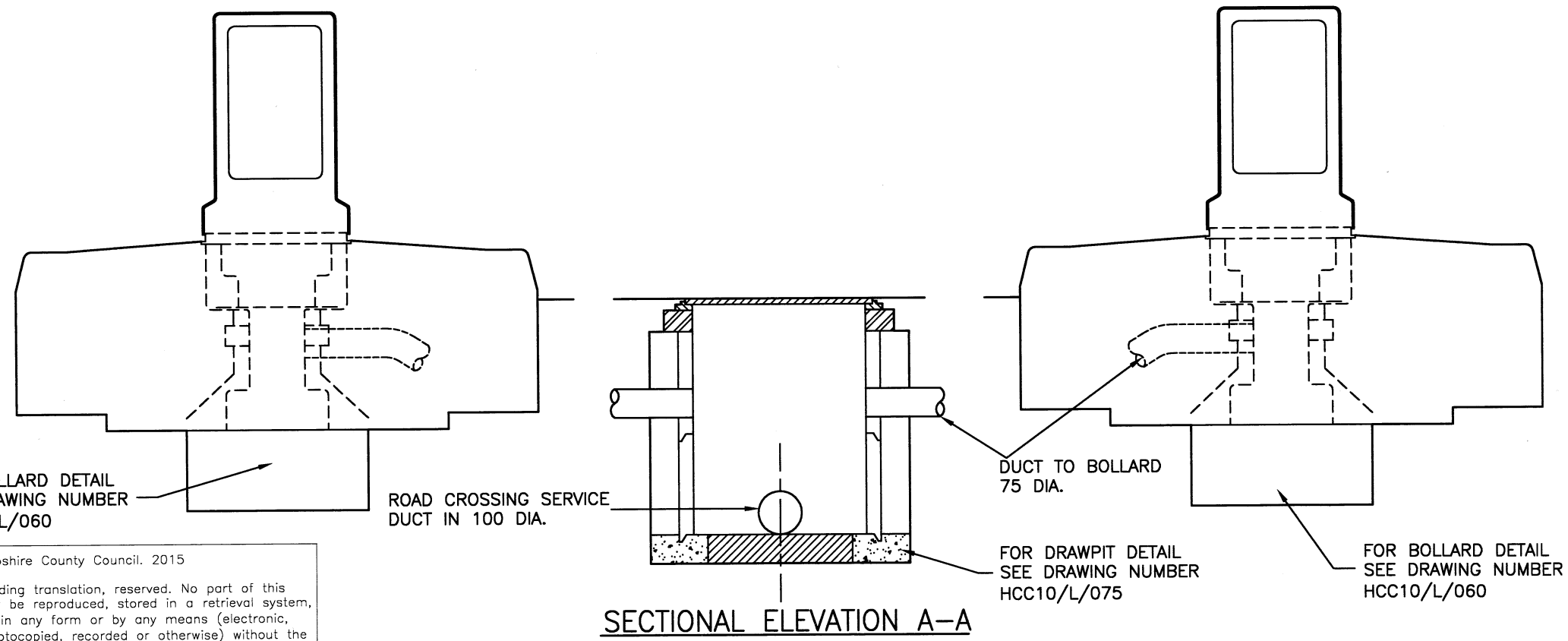


**TYPICAL JUNCTION WITH BOLLARDS ON CENTRE ISLAND
BOLLARD, DRAWPIT & DUCT LAYOUT**



- NOTES:**
1. ALL DIMENSIONS ARE IN MILLIMETRES.
 2. SUPPLY POINT SHALL BE CLEARLY MARKED WITH A STENCILLED NOTICE STATING "SUB-FUSE SUPPLY POINT" ON EXTERIOR OF COLUMN.
 3. INTERNALLY, ALL CABLES SHALL BE CLEARLY MARKED WITH EITHER:
"OUTGOING TO SIGN No." OR
"INCOMING FROM COLUMN No. FUSE SIZE 6A".
 4. BOLLARD BASE SHALL BE INSTALLED SO AS TO WITHSTAND THE BOLLARD BEING HIT BY A LORRY WITHOUT THE BASE BREAKING AWAY FROM THE FOUNDATION OR THE FOUNDATION MOVING EVEN IN VERGE.
 5. ALL DUCTS SHALL BE LEFT WITH A 'DRAW ROPE' IN PLACE, EVEN AFTER CABLE INSTALLATION.
 6. THE CONTRACTOR SHALL ENSURE THAT ALL DRAWPITS HAVE DRAINAGE THROUGH THE BASE COURSE.

REV	AMENDMENTS	DATE	CAD	CHKD	APPD

CONSULTANT

STUART JARVIS BSc DipTP FCIHT MRTPI: DIRECTOR OF ECONOMY, TRANSPORT & ENVIRONMENT

SCHEME

STANDARD DETAILS

DRAWING TITLE

BOLLARD AND DRAWPIT COMBINATION

HCC CADplot: 11.Nov.2015 at 9:23am

DRAWN	CHECKED	SCALE @ A3
RB	IH, IH	N.T.S
CAD	APPROVED	DATE
RB	CP	July 2015
DRG No.	REVISION	
HCC10/L/150	-	

Copyright Hampshire County Council. 2015

All rights, including translation, reserved. No part of this publication may be reproduced, stored in a retrieval system, or transmitted in any form or by any means (electronic, mechanical, photocopied, recorded or otherwise) without the prior written permission of Hampshire County Council. Requests should be directed to the Economy, Transport & Environment Department.