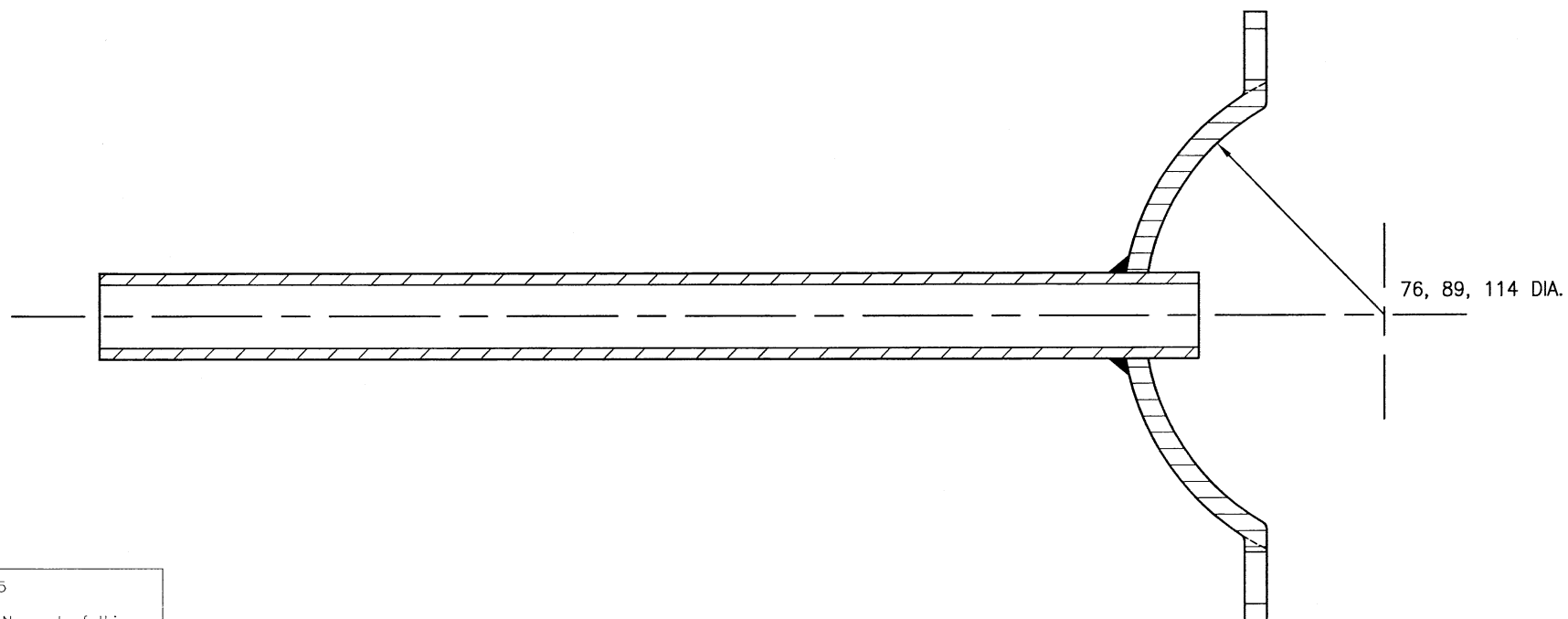


SPECIAL SIGN BRACKET



SECTION X-X

NOTES:

1. ALL DIMENSIONS ARE IN MILLIMETRES.
2. FINISH TO BRACKET TO BE G2A SERIES 1900.
3. THIS DETAIL IS APPLICABLE FOR COLUMN DIAMETERS 76, 89 AND 114.
4. BRACKET TO BE RETAINED BY TESPA BAND STAINLESS STEEL TAPE.
5. BRACKET TO BE SEALED AGAINST INGRESS OF MOISTURE.
6. BRACKET/COLUMN ENTRY IS TO BE BUSHED OR DEBURRED.
7. BRACKET TO BE COMPATIBLE FOR USE WITH A BS 12899 SIGN POST OR A BS EN 40 COLUMN.
8. THE FINAL TOP COAT TO THE BRACKET SHALL MATCH THE FINISH AND BS 4800 COLOUR OF THE COLUMN ON WHICH IT IS MOUNTED.

| REV | AMENDMENTS | DATE | CAD | CHKD | APPD |
|-----|------------|------|-----|------|------|
| - | - | - | - | - | - |

CONSULTANT



 STUART JARVIS BSc DipTP FCIHT MRTPI: DIRECTOR OF ECONOMY, TRANSPORT & ENVIRONMENT


SCHEME

STANDARD DETAILS

DRAWING TITLE

BRACKET TYPE B - SIGN

HCC CADplot: 10.Sep.2015 at 1.05pm

| | | | | | |
|---------|-------------|----------|--|------------|-----------|
| DRAWN | WW | CHECKED | IH, IH. | SCALE @ A3 | N.T.S |
| CAD | WW | APPROVED | CP  | DATE | July 2015 |
| DRG No. | HCC10/L/105 | | | REVISION | - |

Copyright Hampshire County Council. 2015

All rights, including translation, reserved. No part of this publication may be reproduced, stored in a retrieval system, or transmitted in any form or by any means (electronic, mechanical, photocopied, recorded or otherwise) without the prior written permission of Hampshire County Council. Requests should be directed to the Economy, Transport & Environment Department.