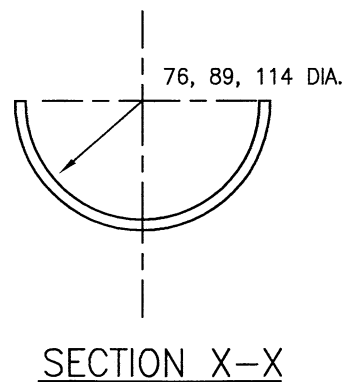


SPECIAL BRACKET FOR BEACON FOR PEDESTRIAN CROSSING



Copyright Hampshire County Council. 2015
 All rights, including translation, reserved. No part of this publication may be reproduced, stored in a retrieval system, or transmitted in any form or by any means (electronic, mechanical, photocopied, recorded or otherwise) without the prior written permission of Hampshire County Council. Requests should be directed to the Economy, Transport & Environment Department.

NOTES:

1. ALL DIMENSIONS ARE IN MILLIMETRES.
2. FINISH TO BRACKET TO BE G2A SERIES 1900.
3. THIS DETAIL IS APPLICABLE FOR COLUMN DIAMETERS 76, 89 AND 114.
4. BRACKET TO BE RETAINED BY TESPA BAND STAINLESS STEEL TAPE.
5. BRACKET TO BE SEALED AGAINST INGRESS OF MOISTURE.
6. BRACKET/COLUMN ENTRY IS TO BE BUSHED OR DEBURRED.
7. MATERIAL TO BE 3 THICK MILD STEEL.
8. BRACKET FINAL TOP COAT SHALL BE 00-E-53 TO BS4800 - UTILISING A TWO PACK EPOXY PAINT.
9. JOINING SIZES MAY VARY BY THE MANUFACTURER'S SPECIFICATION.

REV	AMENDMENTS	DATE	CAD	CHKD	APPD
-	-	-	-	-	-

CONSULTANT

STUART JARVIS BSc DipTP FCIHT MRTPI: DIRECTOR OF ECONOMY, TRANSPORT & ENVIRONMENT

SCHEME

STANDARD DETAILS

DRAWING TITLE

**BRACKET TYPE A
CROSSING BEACON**

HCC CADplot: 10.Sep.2015 at 1:05pm		
DRAWN WW	CHECKED IH, IH.	SCALE @ A3 N.T.S
CAD WW	APPROVED CP <i>[Signature]</i>	DATE July 2015
DRG No. HCC10/L/100	REVISION -	