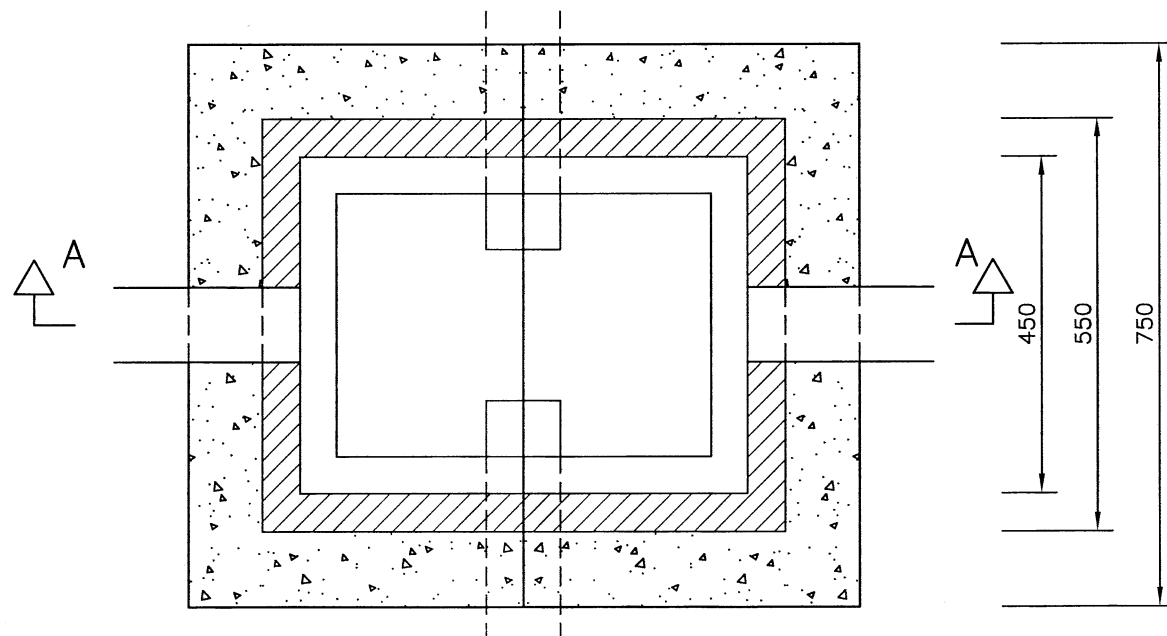


SECTION A-A



PLAN

NOTES:

1. ALL DIMENSIONS ARE IN MILLIMETRES.
2. FOR DETAILS OF LOCATIONS OF DRAWPITS, SEE STREET LIGHTING LAYOUT DRAWINGS.
3. ALL DUCTING AND CABLES SHALL BE LAID IN ACCORDANCE WITH THE CURRENT EDITION OF NJUG IN CONJUNCTION WITH THE CURRENT EDITION OF HAUC (UK).
4. BRICKS TO BE TO BS EN 771-1 AND CLAUSE 2406 LAID ON CLASS (i) MORTAR TO CLAUSE 2404 IN ENGLISH BOND.
5. AS AN ALTERNATIVE TO PRECAST CONCRETE CHAMBERS, HIGH DENSITY CLASS B SOLID ENGINEERING BRICKS MAY BE USED TO A WALL THICKNESS OF 225.
6. ALL DUCTS SHALL BE CRUSH PROOF AND COMPLY WITH DD200.
7. DEPTH OF LOWEST DUCT WILL DETERMINE DEPTH OF CHAMBER.
8. ALL CEMENT USED IN INSITU CONCRETE SHALL BE CII(A OR B)-S OR CIII A OR B TO BS 8500-2, TABLE 1 AND ANNEX A.

REV	AMENDMENTS	DATE	CAD	CHKD	APPD
-	-	-	-	-	-

CONSULTANT

SCHEME

**STANDARD DETAILS**

DRAWING TITLE

**STREET LIGHTING  
DRAWPIT TYPE 2**

HCC CADplot: 10.Sep.2015 at 1:03pm						
DRAWN	WW	CHECKED	IH	SCALE @ A3	N.T.S	
CAD	WW	APPROVED	CP	DATE	July 2015	
DRG No.	HCC10/L/075				REVISION	-

Copyright Hampshire County Council. 2015

All rights, including translation, reserved. No part of this publication may be reproduced, stored in a retrieval system, or transmitted in any form or by any means (electronic, mechanical, photocopied, recorded or otherwise) without the prior written permission of Hampshire County Council. Requests should be directed to the Economy, Transport & Environment Department.