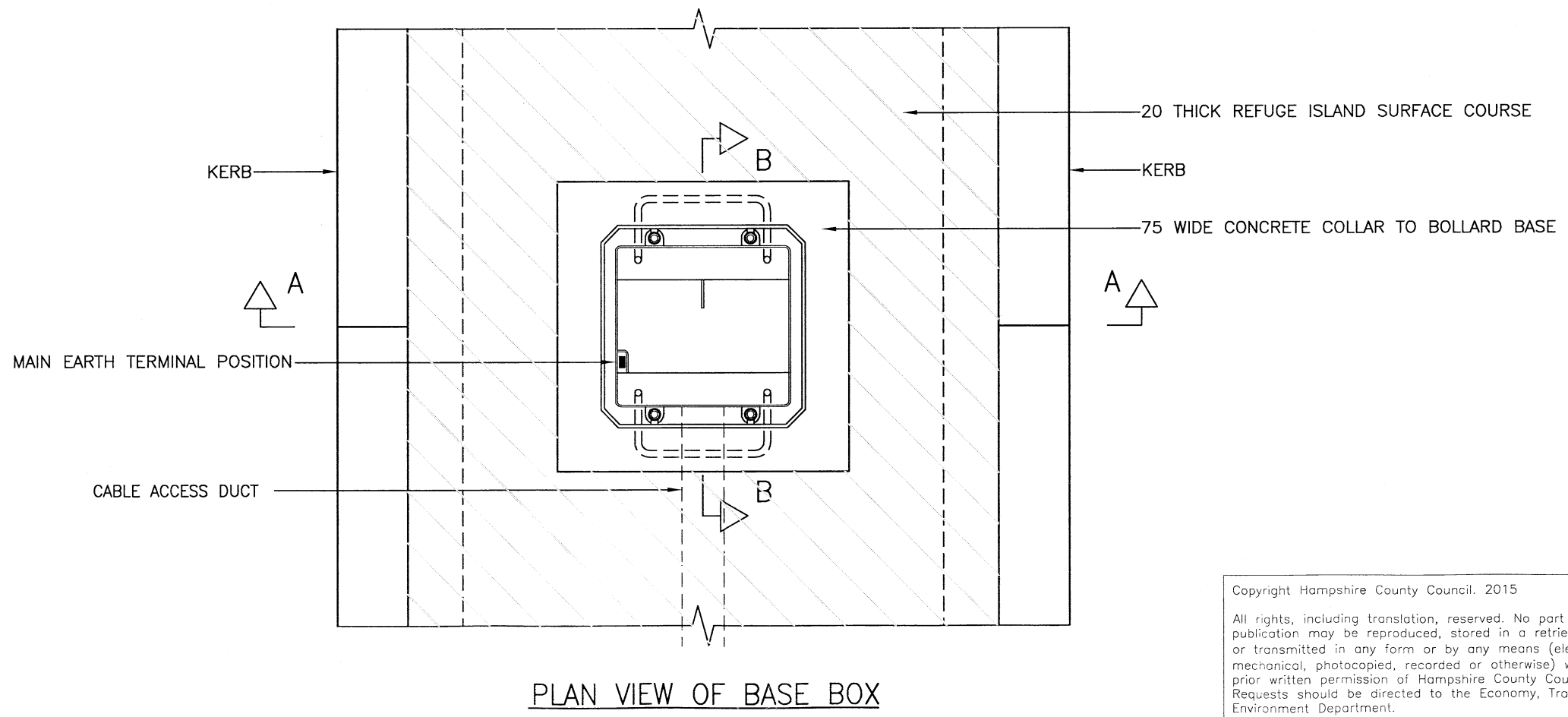
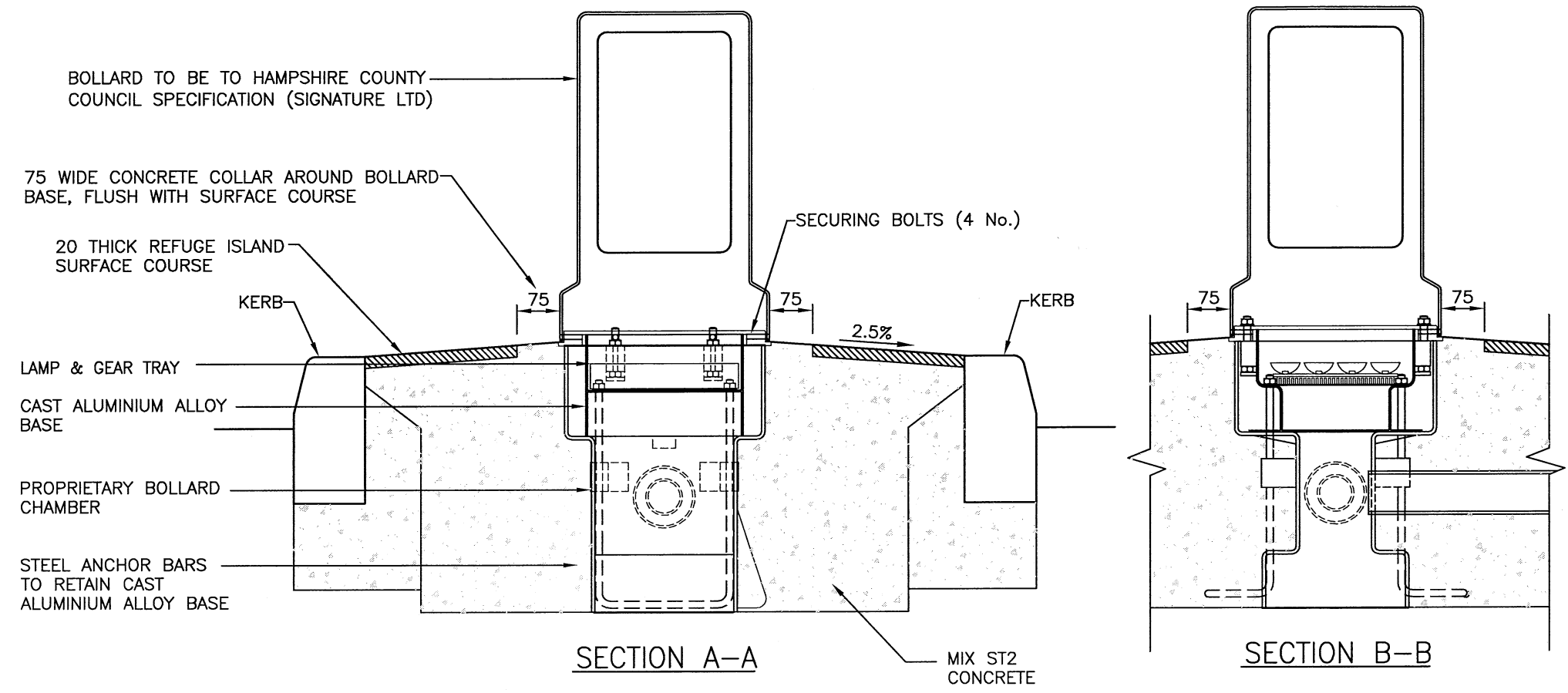


NOTES:

1. ALL DIMENSIONS ARE IN MILLIMETRES.
2. SEE SIGN SCHEDULE FOR BOLLARD ASPECT DETAILS.
3. FOR LOCATIONS OF BOLLARDS, SEE STREET LIGHTING LAYOUT DRAWINGS.
4. FOR BOLLARD AND DRAWPIT COMBINATIONS SEE DRAWING No. HCC10/L/150.
5. THE MINIMUM CONCRETE VOLUME EVENLY SURROUNDING THE BASE SECTION SHALL BE 0.8m³.



| REV | AMENDMENTS | DATE | CAD | CHKD | APPD |
|-----|------------|------|-----|------|------|
| | | | | | |

CONSULTANT

STUART JARVIS BSc DipTP FCIHT MRTPI: DIRECTOR OF ECONOMY, TRANSPORT & ENVIRONMENT

SCHEME

STANDARD DETAILS

DRAWING TITLE

INTERNALLY ILLUMINATED BOLLARD DETAILS

| | | |
|------------------------------------|----------|------------|
| HCC CADplot: 10.Sep.2015 at 1:01pm | | |
| DRAWN | CHECKED | SCALE @ A3 |
| RB | IH, IH | N.T.S |
| CAD | APPROVED | DATE |
| RB | CP | July 2015 |
| DRG No. | REVISION | |
| HCC10/L/060 | - | |

Copyright Hampshire County Council. 2015

All rights, including translation, reserved. No part of this publication may be reproduced, stored in a retrieval system, or transmitted in any form or by any means (electronic, mechanical, photocopied, recorded or otherwise) without the prior written permission of Hampshire County Council. Requests should be directed to the Economy, Transport & Environment Department.