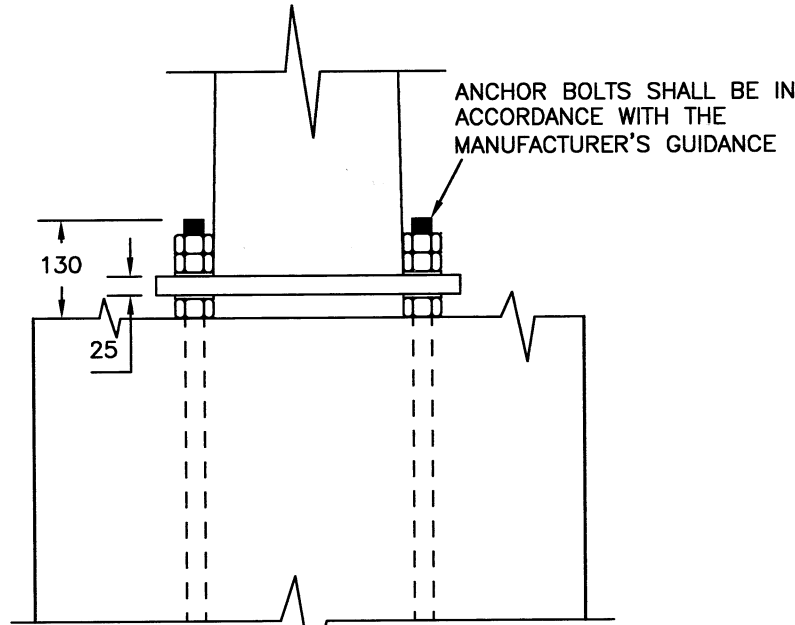
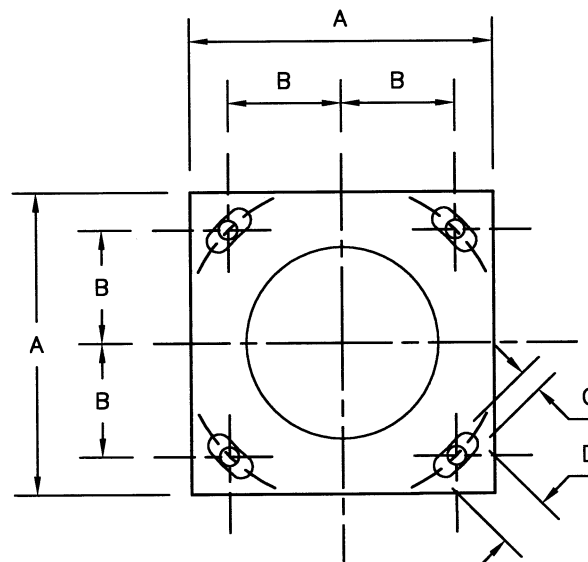


NOMINAL HEIGHT OF COLUMN (ABOVE G.L.)	MAXIMUM LANTERN		B.S. 5649 'K' FACTOR
	WEIGHT Kg	WINDAGE m ²	
8 METRE	20	0.20	1.8
10 METRE	20	0.22	1.8
12 METRE	20	0.22	1.8

DOOR OPENING - 600x115
 LANTERN MOUNTING - 76 DIA. POST TOP
 SPIGOTS - TBC BY MANUFACTURER
 COLUMN NUMBER - 2500 ABOVE GROUND LEVEL ON THE OPPOSITE SIDE OF THE COLUMN TO THE DOOR OPENING

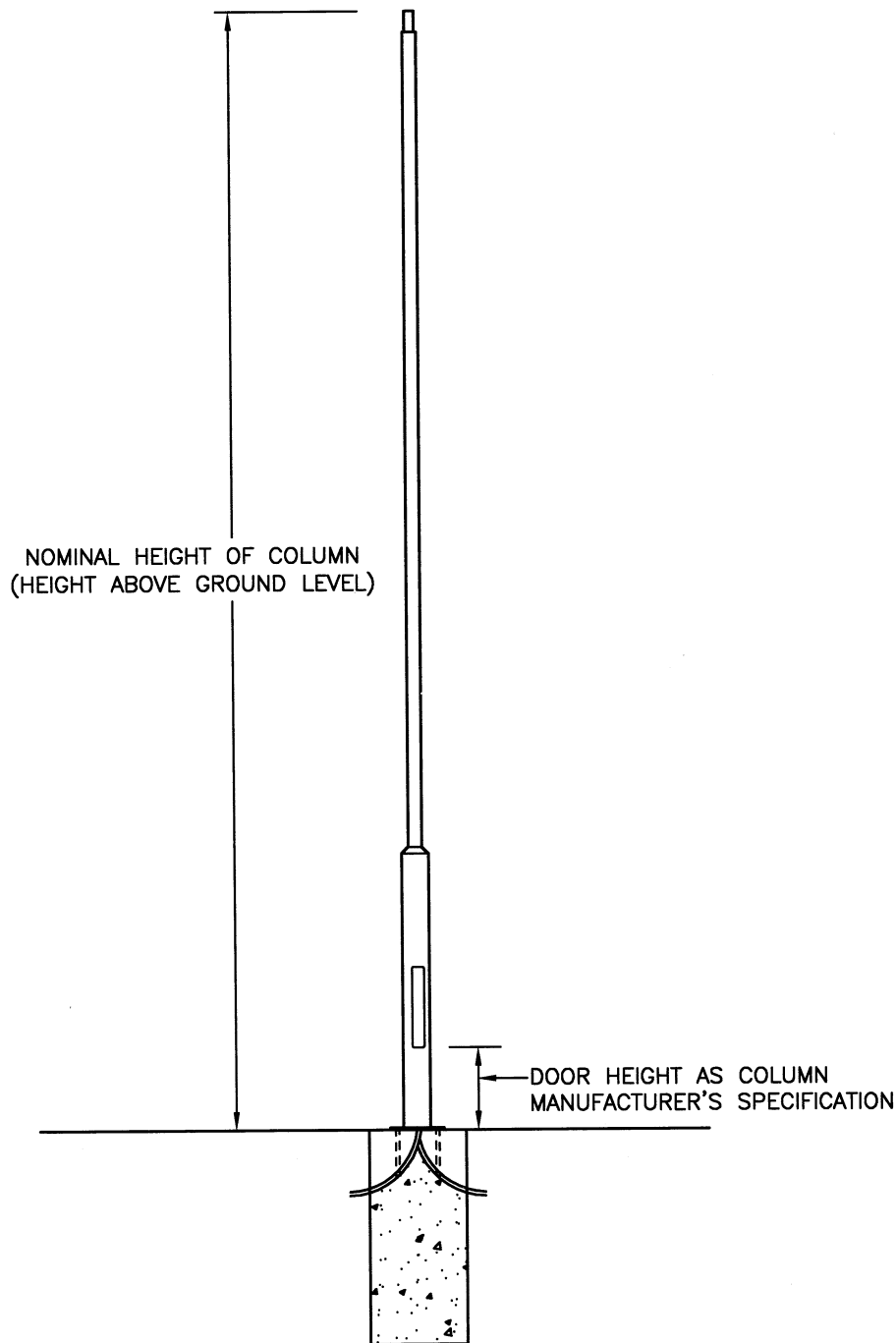


ELEVATION OF COLUMN BASE
 DUCTS NOT SHOWN FOR CLARITY



REFERENCES A, B, C & D ARE MANUFACTURER'S DIMENSIONS, WHICH MAY VARY ACCORDING TO SIZE.

PLAN OF FLANGED BASE PLATE
 DUCTS NOT SHOWN FOR CLARITY



POST TOP COLUMN TYPE 2C

NOTES:

- ALL DIMENSIONS ARE IN MILLIMETRES.
- FOR DETAILS OF LOCATIONS OF STREET LIGHTING COLUMNS, SEE STREET LIGHTING LAYOUT DRAWINGS.
- COLUMNS SHALL COMPLY WITH PD6547:2004+A1:2009 AND THE DEPARTMENTAL STANDARD BD 94/07 IN ADDITION TO THE HCC COLUMN SPECIFICATION, WHICH MUST BE READ IN CONJUNCTION WITH THIS DRAWING.
- ANY DAMAGE TO THE EQUIPMENT DURING INSTALLATION OR BEFORE ACCRUAL ONTO THE COUNTY'S INVENTORY MUST BE REPAIRED TO A SATISFACTORY STANDARD IN ACCORDANCE WITH THE GUIDELINES GIVEN BY THAT SPECIFIC MANUFACTURER FOR ITS SPECIFIC FINISH OR COATING.
- ALL DUCTING AND CABLES SHALL BE LAID IN ACCORDANCE WITH THE CURRENT EDITION OF NJUG IN CONJUNCTION WITH THE CURRENT EDITION OF HAUC (UK) GUIDANCE.
- THE DESIGN OF THE COLUMN, FOUNDATION AND METHOD OF ATTACHMENT SHALL COMPLY WITH THE DEPARTMENTAL STANDARD BD 94/07.
- LANTERNS SHALL HAVE A MAXIMUM TILT OF 5°.
- ANY DEVIATION FROM THE LISTED COLUMN WEIGHT AND/OR WINDAGE MUST BE REFERRED BACK TO THE MANUFACTURER FOR ADDITIONAL GUIDANCE AND MUST BE RECORDED.
- DOORS TO BE SECURED BY STAINLESS STEEL M8 ANTI-VANDAL DOOR BOLTS WITH HEXAGONAL HEAD COMPLETE WITH INTEGRAL CENTRE PIN, CAPABLE OF BEING OPERATED ONLY WITH SPECIAL HEXAGONAL KEY WITH CENTRE HOLE TO ACCEPT PIN LOCATION.

REV	AMENDMENTS	DATE	CAD	CHKD	APPD
-	-	-	-	-	-

CONSULTANT

Hampshire County Council Engineering CONSULTANCY

STUART JARVIS BSc DipTP FCIHT MRTPI: DIRECTOR OF ECONOMY, TRANSPORT & ENVIRONMENT

SCHEME

STANDARD DETAILS

DRAWING TITLE

**COLUMN TYPE 2C
 TUBULAR STEEL
 FLANGED COLUMNS**

DRAWN	CHECKED	SCALE @ A3
WW	IH, IH	N.T.S
CAD	APPROVED	DATE
WW	CP	July 2015
DRG No.	REVISION	
HCC10/L/035	-	

Copyright Hampshire County Council. 2015

All rights, including translation, reserved. No part of this publication may be reproduced, stored in a retrieval system, or transmitted in any form or by any means (electronic, mechanical, photocopied, recorded or otherwise) without the prior written permission of Hampshire County Council. Requests should be directed to the Economy, Transport & Environment Department.