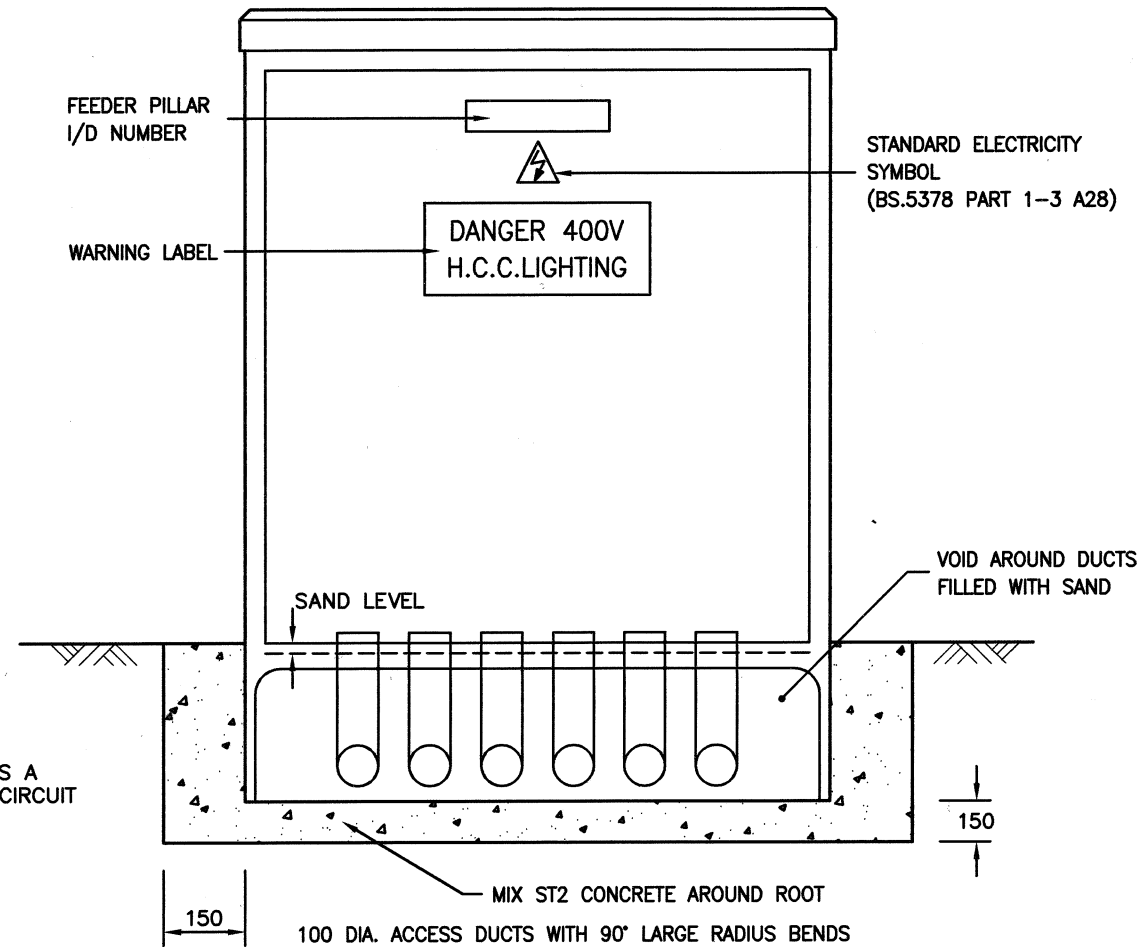
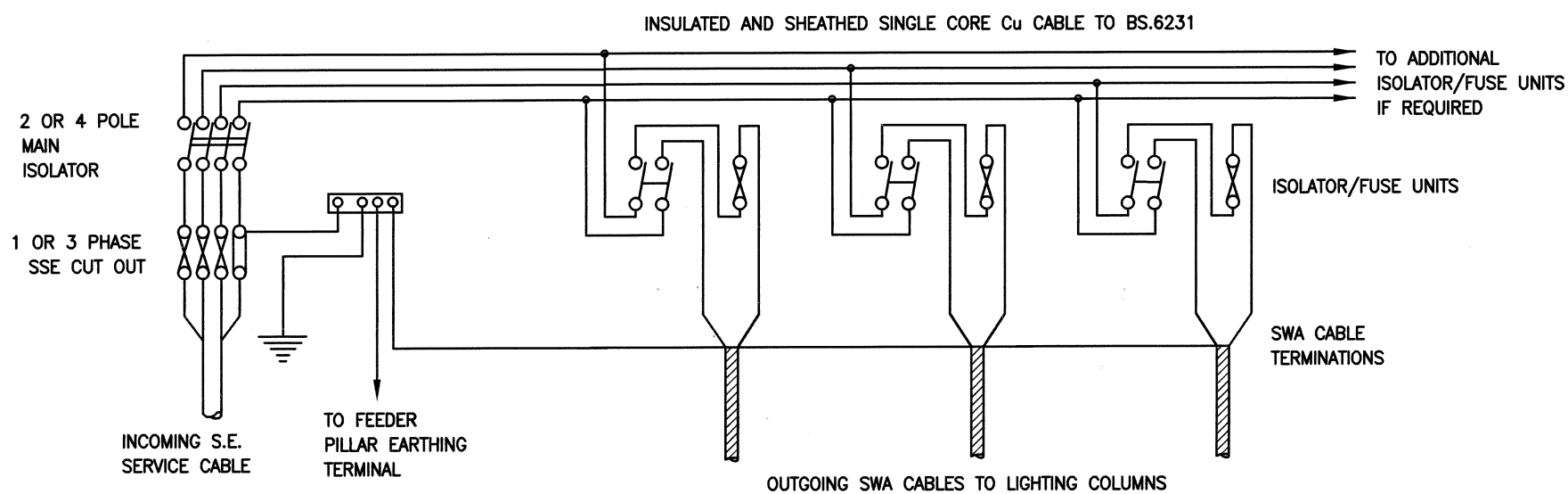


TYPICAL FRONT VIEW OF FEEDER PILLAR



FEEDER PILLAR FOUNDATION DETAIL



TYPICAL WIRING LAYOUT

NOTES:

1. ALL DIMENSIONS ARE IN MILLIMETRES.
2. FOR LOCATION OF FEEDER PILLARS, SEE STREET LIGHTING LAYOUT DRAWINGS.
3. A MINIMUM OF 1m² OF HARD STANDING SHALL BE PROVIDED AT GROUND LEVEL IMMEDIATELY IN FRONT OF THE PILLAR DOOR.
4. ALL PRIVATE NETWORKS TO BE LABELLED - WEATHER-PROOF (EG ENCAPSULATED) SCHEMATIC DIAGRAM TO BE SECURED IN THE PILLAR AND TO DETAIL THE CABLE ROUTE AND LIGHTING UNITS ON EACH CIRCUIT.

A	NOTE 4 ADDED	MAY 18	JA	PS	✓
REV	AMENDMENTS	DATE	CAD	CHKD	APPD

CONSULTANT

STUART JARVIS BSc DipTP FCIHT MRTPI: DIRECTOR OF ECONOMY, TRANSPORT & ENVIRONMENT

SCHEME

STANDARD DETAILS

DRAWING TITLE

GENERAL FEEDER PILLAR DETAILS

HCC CADplot: 22.Aug.2018 at 11:40am					
DRAWN	RB	CHECKED	IH, IH	SCALE @ A3	N.T.S
CAD	RB	APPROVED	CP, CP	DATE	July 2015
DRG No.	HCC10/L/090			REVISION	A

Copyright Hampshire County Council. 2015

All rights, including translation, reserved. No part of this publication may be reproduced, stored in a retrieval system, or transmitted in any form or by any means (electronic, mechanical, photocopied, recorded or otherwise) without the prior written permission of Hampshire County Council. Requests should be directed to the Economy, Transport & Environment Department.

HCC CADfile: K:\Eng\Standard\AutoCAD\Standard Details (Secure) As Updated Dec 2011\HCC10 2015 STANDARD DETAILS\Standard Detail Changes\L Series\L-090 Rev A.dwg