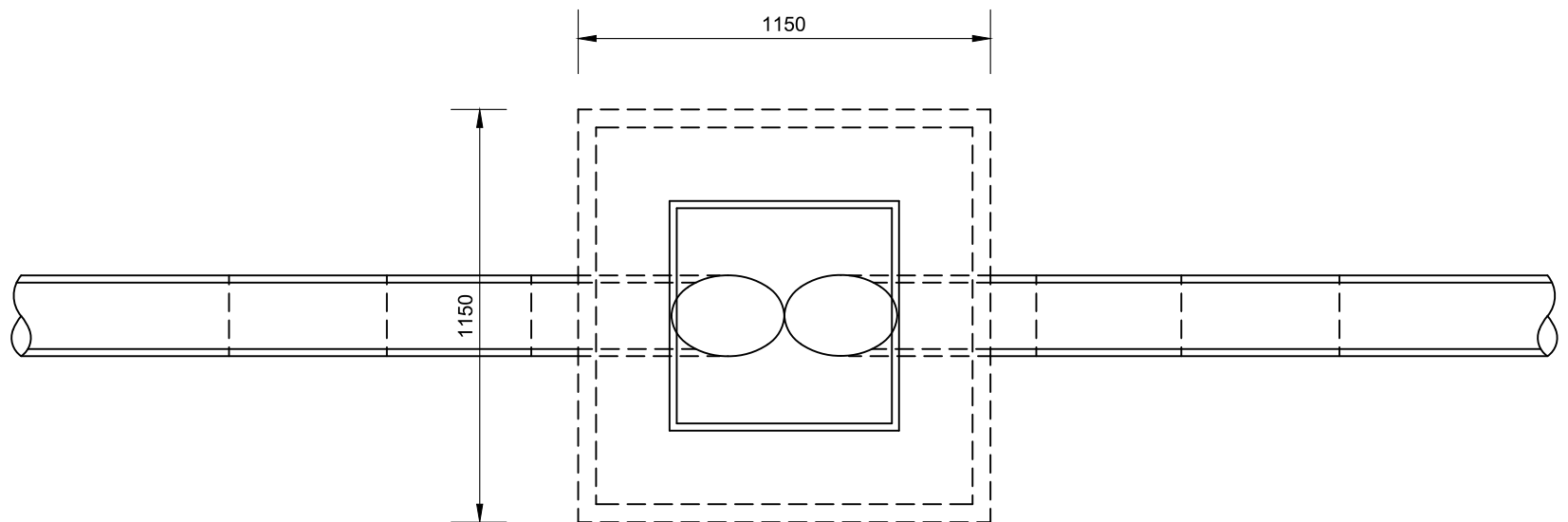


SECTION ON C-C



PLAN RODDING EYE TYPE 2

(RODDING EYE TYPE 1 AS ABOVE BUT FOR SINGLE PIPE ENTRY)

3 COURSES 225 BRICKWORK IN HIGH DENSITY CLASS B SOLID CLAY ENGINEERING BRICKS TO BS EN 771-1 AND CLAUSE 2406 IN CLASS (i). MORTAR TO CLAUSE 2404. BRICKWORK TO BE CONSTRUCTED IN ENGLISH BOND WITH MAX. 50 OVERHANG TO CORBELLING.

PIPE ENDS TO BE CUT PARALLEL TO BASE SLAB

COVER AND FRAME SHALL HAVE A 600X600 CLEAR OPENING AND BE AS DESCRIBED IN APPENDIX 5/1. THE FRAME SHALL BE BEDDED ON MINIMUM 15 THICKNESS OF POLYESTER RESIN MORTAR.

FINISHED GROUND LEVEL

REINSTATE OVERDIG IN ACCORDANCE WITH CLAUSE 507.7

MIX ST4 CONCRETE BASE (SEE NOTE 4)

SEE NOTE 3

RADIUS NOT LESS THAN 1800

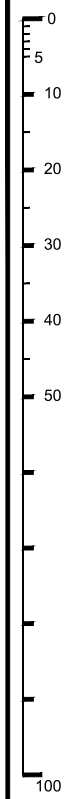
INVERT LEVEL OF THIS POINT SHOWN ON THE SCHEME DRAWINGS

1150

1150

NOTES

1. ALL DIMENSIONS ARE IN MILLIMETRES.
2. THE RAMPED PIPES AND BENDS SHALL BE FLEXIBLY JOINTED.
3. THE JOINT NEAREST TO THE RODDING EYE SHALL BE NOT MORE THAN 600mm IN ANY DIRECTION FROM THE INSIDE SURFACE OF THE CHAMBER.
4. ALL CEMENT USED IN INSITU CONCRETE SHALL BE CII(A OR B)-S OR CIII-A OR B TO BS 8500-1, TABLE 1 AND ANNEX A.



REV	AMENDMENTS	DATE	CAD	CHKD	APPD
A	BRANDING UPDATED	14.07.2022	CLT	KM	

CONSULTANT




STUART JARVIS BSc DipTP FCIHT MRTPI: DIRECTOR OF ECONOMY, TRANSPORT & ENVIRONMENT

SCHEME

STANDARD DETAILS

DRAWING TITLE

**RODDING EYE
TYPES 1 AND 2**

DESIGNER	CHECKED	SCALE @ A3
RB	JPR JPR	N.T.S
CAD	APPROVED	DATE
RB	CDP CDP	March 2020
DRAWING NUMBER	REV	
HCC11/D/120	A	

Copyright Hampshire County Council. 2022

All rights, including translation, reserved. No part of this publication may be reproduced, stored in a retrieval system, or transmitted in any form or by any means (electronic, mechanical, photocopied, recorded or otherwise) without the prior written permission of Hampshire County Council. Requests should be directed to the Economy, Transport & Environment Department.