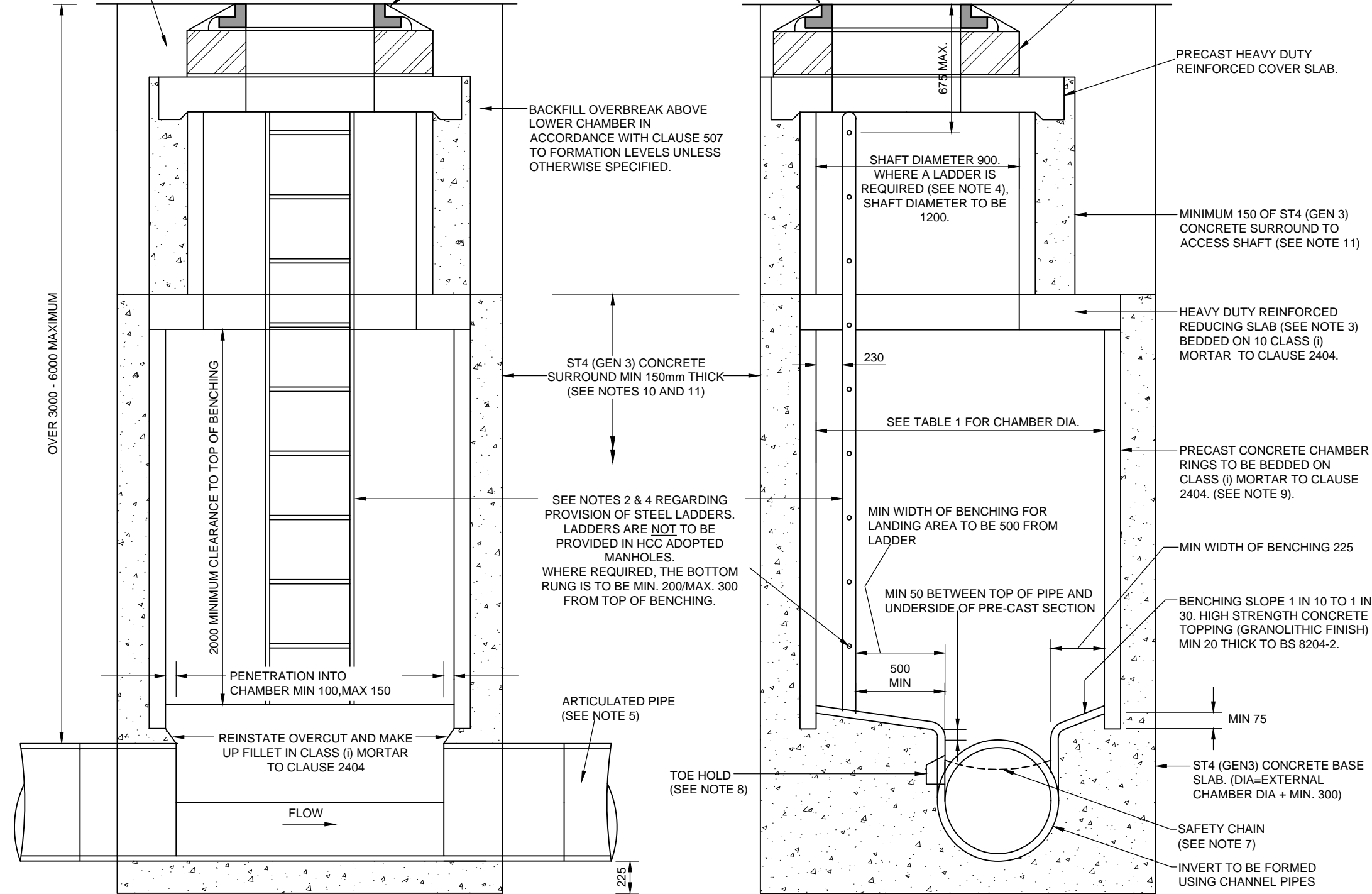


- REINSTATE ABOVE COVER SLAB AS FOLLOWS:
- (i) CARRIAGEWAYS - IN MATERIALS SPECIFIED IN APPENDIX 7/1.
  - (ii) FOOTWAYS AND OTHER PAVED AREAS - TO FORMATION LEVEL IN SUBBASE TO CLAUSE 803
  - (iii) GRASSED AREAS - TO UNDERSIDE OF TOPSOIL IN COMPACTED GENERAL FILL MATERIAL.

COVER AND FRAME SHALL HAVE A CLEAR OPENING AS DESCRIBED IN APPENDIX 5/1. THE FRAME SHALL BE BEDDED ON MINIMUM 15 THICKNESS OF POLYESTER RESIN MORTAR. WHERE IN THE VERGE, A MORTAR HAUNCH IS TO BE PROVIDED TO COVER AND FRAME.

CONSTRUCT A MINIMUM OF 2 AND MAXIMUM OF 4 COURSES OF 225 HIGH DENSITY TYPE CLASS B SOLID CLAY ENGINEERING BRICKS TO BS EN 771-1 AND CLAUSE 2406 IN ENGLISH BOND LAID ON CLASS (i) MORTAR TO CLAUSE 2404 (SEE NOTE 6).

PROPRIETARY PRECAST CONCRETE ADJUSTING UNITS MAYBE USED IN LIEU OF BRICKWORK. ONLY TWO-PIECE UNITS THAT COMPLY WITH BS EN 1917 AND BS 5911-3 SHALL BE USED (SEE NOTE 7).



SECTION A-A

NOTES

1. ALL DIMENSIONS ARE IN MILLIMETRES.
2. CHAMBER RINGS, COVER SLAB AND MANHOLE STEPS ALL TO BS 5911-3, BS EN 1917 AND BS EN 13101. WHERE SPECIFIED, MANHOLE STEPS (SEE NOTE 3) ARE TO BE GALVANISED MILD STEEL OR PLASTIC ENCAPSULATED AND FITTED AT THE FACTORY. LADDERS, WHERE SPECIFIED, ARE TO BE TO BS EN 14396 AND "SEWERS FOR ADOPTION".
3. UNLESS OTHERWISE STATED IN APPENDIX 5/1, WHERE CHAMBER DIAMETER IS LESS THAN 1500 THE REDUCING SLAB IS NOT TO BE PROVIDED AND THE PC RINGS ARE TO CONTINUE UP TO THE COVER SLAB.
4. FOR MANHOLES TO BE ADOPTED BY OTHERS, THE REQUIREMENTS REGARDING THE PROVISION OF STEP IRONS/LADDERS ARE CONTAINED IN APPENDIX 5/1, TABLE 5/1 AND "SEWERS FOR ADOPTION". OTHERWISE, STEP IRONS/LADDERS ARE NOT TO BE INSTALLED.
5. ALL PIPES CONNECTING TO THE CHAMBER SHALL HAVE AN ARTICULATED SECTION (ROCKER PIPE) WITH A JOINT AS CLOSE AS POSSIBLE TO THE CHAMBER TO PERMIT SUBSEQUENT MOVEMENT. THE LENGTH OF THE ARTICULATED PIPES SHALL BE AS SHOWN IN TABLE 2 ON THIS DRAWING.
6. IF THE CHAMBER IS TO BE TRAFFICKED WITHIN 48 HOURS OF BRICKWORK CONSTRUCTION, A RAPID HARDENING CEMENTITIOUS OR POLYESTER RESIN MORTAR SHALL BE USED.
7. ALL PROPRIETARY PRECAST CONCRETE ADJUSTING UNITS SHALL BE BEDDED ON MINIMUM 15 THICK POLYESTER RESIN MORTAR TO CLAUSE 2601.
8. FOR REQUIREMENTS REGARDING THE PROVISION OF SAFETY CHAINS REFER TO APPENDIX 5/1, TABLE 5/1 AND "SEWERS FOR ADOPTION".
9. SELF-CLEANING TOE HOLDS ARE TO BE PROVIDED WHERE THE CHANNEL IS GREATER THAN 600 WIDE.
10. THE LIFTING EYES IN PRECAST CONCRETE RINGS ARE TO BE POINTED WITH CLASS (i) MORTAR TO CLAUSE 2404

B	COPYRIGHT AMENDED AND NEW DIRECTORATE DETAILED.	09.02.2023	AM	MM	MC
A	SUBBASE TO CL 894R DELETED AND BRANDING UPDATED.	23.06.2022	CLT	KM	MC
REV	AMENDMENTS	DATE	CAD	CHKD	APPD

CONSULTANT

TIM LAWTON BEng CEng FICE FCIHT : ASSISTANT DIRECTOR OF UNIVERSAL SERVICES

SCHEME

# STANDARD DETAILS

DRAWING TITLE

## MANHOLE TYPES M1Z, M1Y, M1X & M1W (PRECAST CONCRETE, DEPTH EXCEEDING 3.0m BUT NOT 6.0m)

TYPE	LARGEST PIPE DIA	CHAMBER DIA
M1Z	UP TO 300	1200
M1Y	375 UP TO 450	1350
M1X	500 UP TO 700	1500
M1W	750 UP TO 900	1800
-	>900	(Pipe Ø)+ 900

NOMINAL PIPE DIA	EFFECTIVE LENGTH
150 TO 600	600
OVER 600 TO 750	1000
OVER 750	1250

TABLE 1

TABLE 2

Copyright Hampshire County Council.

All rights, including translation, reserved. No part of this publication may be reproduced, stored in a retrieval system, or transmitted in any form or by any means (electronic, mechanical, photocopied, recorded or otherwise) without the prior written permission of Hampshire County Council. Requests should be directed to Hampshire Engineering Services.

NOTES CONTINUED

11. ALL CEMENT USED IN INSITU CONCRETE SHALL BE CII(A OR B)-S OR CIII A OR B TO BS 8500-2, TABLE 1 AND ANNEX A.
12. THE HEIGHT OF EACH POUR OF THE CONCRETE SURROUND SHALL NOT EXCEED 2000. THERE IS TO BE A MINIMUM OF 150 BETWEEN ANY CONCRETE CONSTRUCTION JOINT AND A JOINT IN THE PRECAST MANHOLE SECTIONS.
13. THE CONTRACTOR IS TO PROVIDE TEMPORARY WORKS DETAILS AND A METHOD STATEMENT FOR APPROVAL BY THE OVERSEEING ORGANISATION AT LEAST 2 WEEKS PRIOR TO CONSTRUCTION.

DESIGNER	CHECKED	SCALE @ A3
MC	JPR   JPR	N.T.S
CAD	APPROVED	DATE
MC	CDP   CDP	Jan 2020
DRAWING NUMBER	REV	
HCC11/D/050	B	