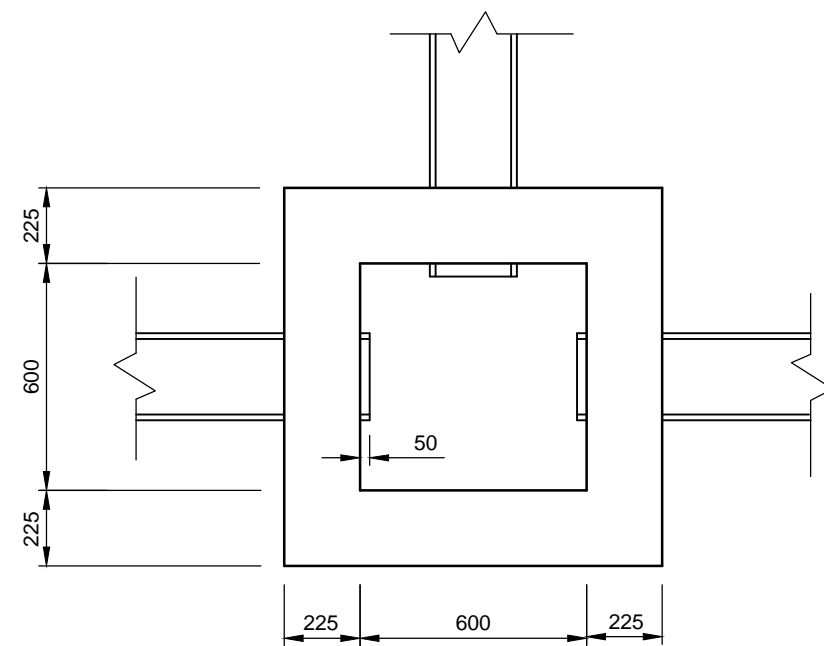


TYPICAL SECTION

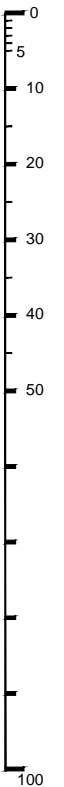


TYPICAL PLAN

GRATING AND CONCRETE BACKFILL OMITTED FOR CLARITY

NOTES

1. ALL DIMENSIONS ARE IN MILLIMETRES.
2. THE CHAMBER SHALL BE CONSTRUCTED OF HIGH DENSITY TYPE CLASS B SOLID CLAY ENGINEERING BRICKS TO BS EN 771-1 AND CLAUSE 2406 LAID ON CLASS (i) MORTAR TO CLAUSE 2404 IN ENGLISH BOND. IF THE CHAMBER IS TO BE TRAFFICKED WITHIN 48 HOURS OF BRICKWORK CONSTRUCTION, A RAPID HARDENING CEMENTITIOUS MORTAR SHALL BE USED.
3. A STUB PIPE SHALL BE PROVIDED FOR EACH PIPE CONNECTING TO THE CHAMBER OF SUFFICIENT LENGTH TO ENABLE THE NEXT PIPE TO BE JOINTED AND NOT BE RESTRICTED BY CONCRETE BACKFILL.
4. ALL CEMENT USED IN INSITU CONCRETE SHALL BE CII(A OR B)-S OR CIII A OR B TO BS 8500-2, TABLE 1 AND ANNEX A.



B	COPYRIGHT AMENDED AND NEW DIRECTORATE DETAILED.	09.02.2023	AM	JM	
A	BRANDING UPDATED.	04.07.2022	CLT	KM	MC
REV	AMENDMENTS	DATE	CAD	CHKD	APPD

CONSULTANT




TIM LAWTON BEng CEng FICE FCIHT : ASSISTANT DIRECTOR OF UNIVERSAL SERVICES

SCHEME

STANDARD DETAILS

DRAWING TITLE

**COMBINED CATCHPIT/GULLY
TYPE CCG - BRICK**

DESIGNER	CHECKED	SCALE @ A3
RB	JPR JPR	N.T.S
CAD	APPROVED	DATE
RB	CDP CDP	March 2020
DRAWING NUMBER	REV	
HCC11/D/030	B	

Copyright Hampshire County Council.

All rights, including translation, reserved. No part of this publication may be reproduced, stored in a retrieval system, or transmitted in any form or by any means (electronic, mechanical, photocopied, recorded or otherwise) without the prior written permission of Hampshire County Council. Requests should be directed to Hampshire Engineering Services.