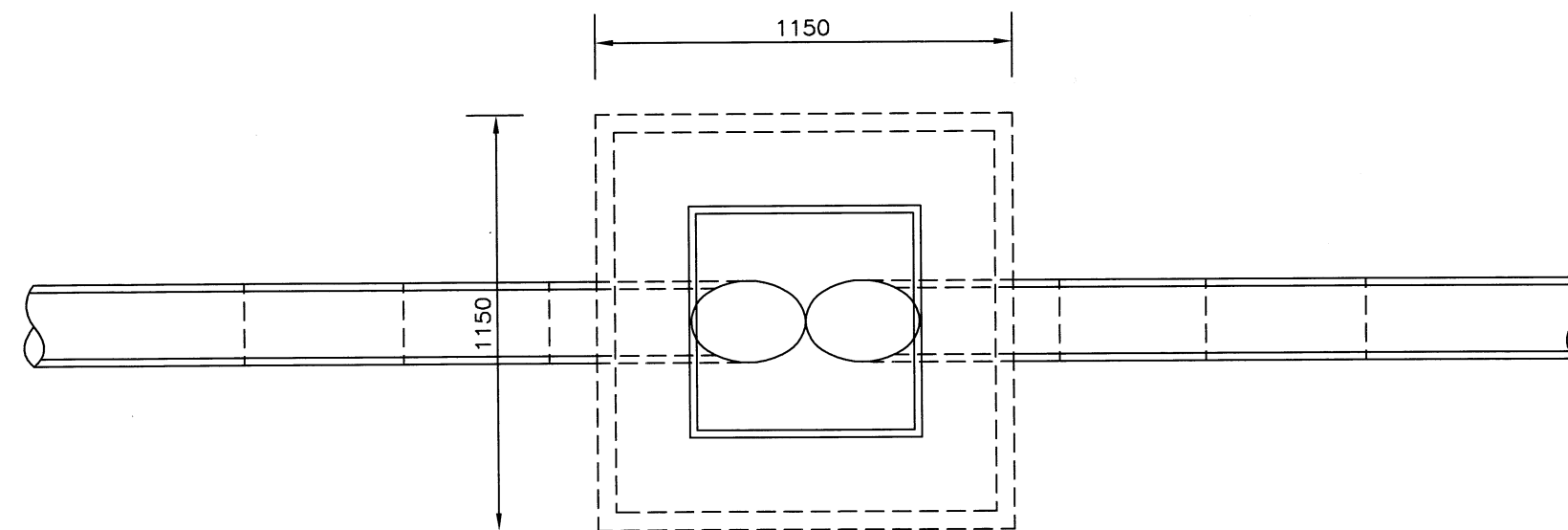



SECTION ON C



PLAN RODDING EYE TYPE 2  
(RODDING EYE TYPE 1 AS ABOVE BUT FOR SINGLE PIPE ENTRY)

NOTES:

1. ALL DIMENSIONS ARE IN MILLIMETRES.
2. THE RAMPED PIPES AND BENDS SHALL BE FLEXIBLY JOINTED.
3. THE JOINT NEAREST TO THE RODDING EYE SHALL BE NOT MORE THAN 600mm IN ANY DIRECTION FROM THE INSIDE SURFACE OF THE CHAMBER.
4. ALL CEMENT USED IN INSITU CONCRETE SHALL BE CII(A OR B)-S OR CIII-A OR B TO BS 8500-1, TABLE 1 AND ANNEX A.

REV	AMENDMENTS	DATE	CAD	CHKD	APPD	
-	-	-	-	-	-	
CONSULTANT						
 STUART JARVIS BSc DipTP FCIHT MRTPI: DIRECTOR OF ECONOMY, TRANSPORT & ENVIRONMENT						
SCHEME						
STANDARD DETAILS						
DRAWING TITLE						
RODDING EYE TYPES 1 AND 2						
HCC CADplot: 18.Sep.2015 at 2:10pm						
DRAWN	RB	CHECKED	WW	SCALE @ A3	N.T.S	
CAD	RB	APPROVED	CP	DATE	July 2015	
DRG No.	HCC10/D/125				REVISION	-

Copyright Hampshire County Council. 2015

All rights, including translation, reserved. No part of this publication may be reproduced, stored in a retrieval system, or transmitted in any form or by any means (electronic, mechanical, photocopied, recorded or otherwise) without the prior written permission of Hampshire County Council. Requests should be directed to the Economy, Transport & Environment Department.