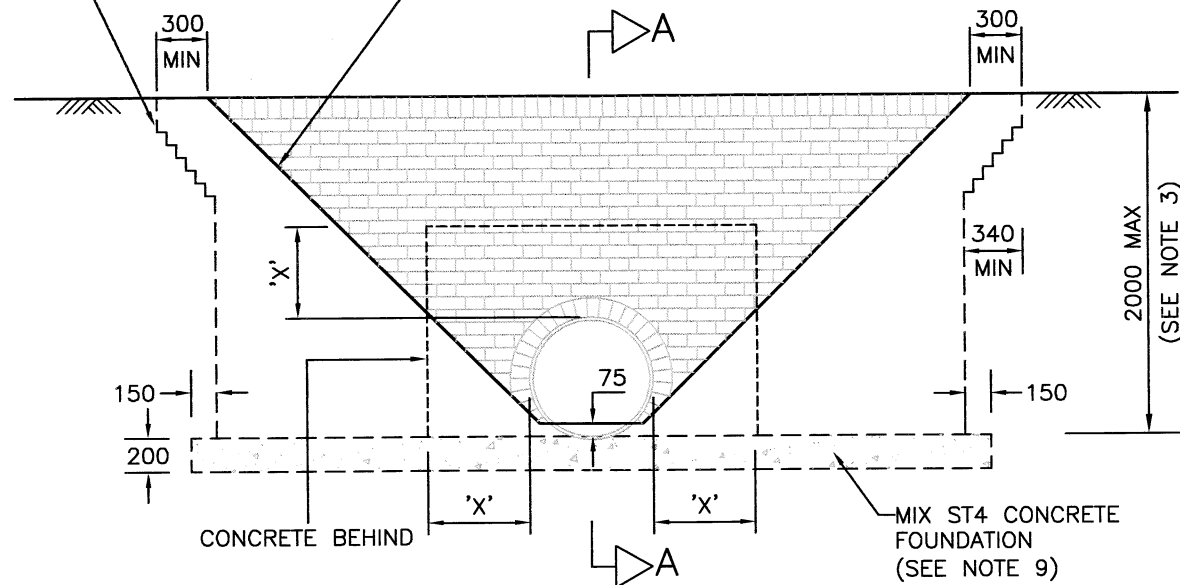


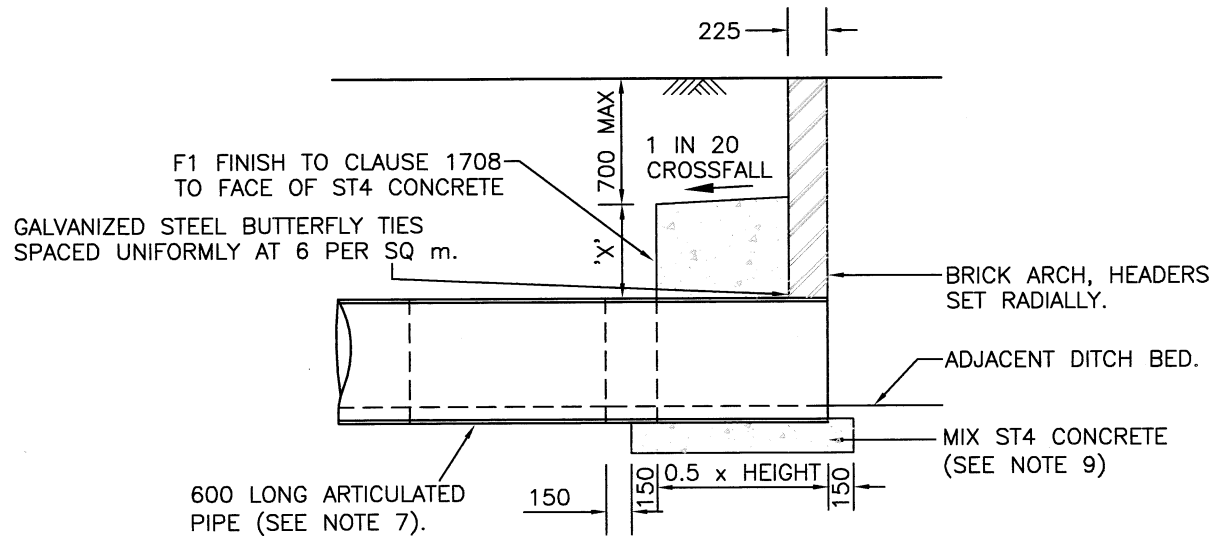
STAINLESS STEEL COPING CRAMPS TO HOLD END BRICKS OF TOP COURSE IN PLACE

TYPE 2 DITCH PROFILE SHOWN. SEE ENGINEERING PLANS FOR TYPE SPECIFIED.



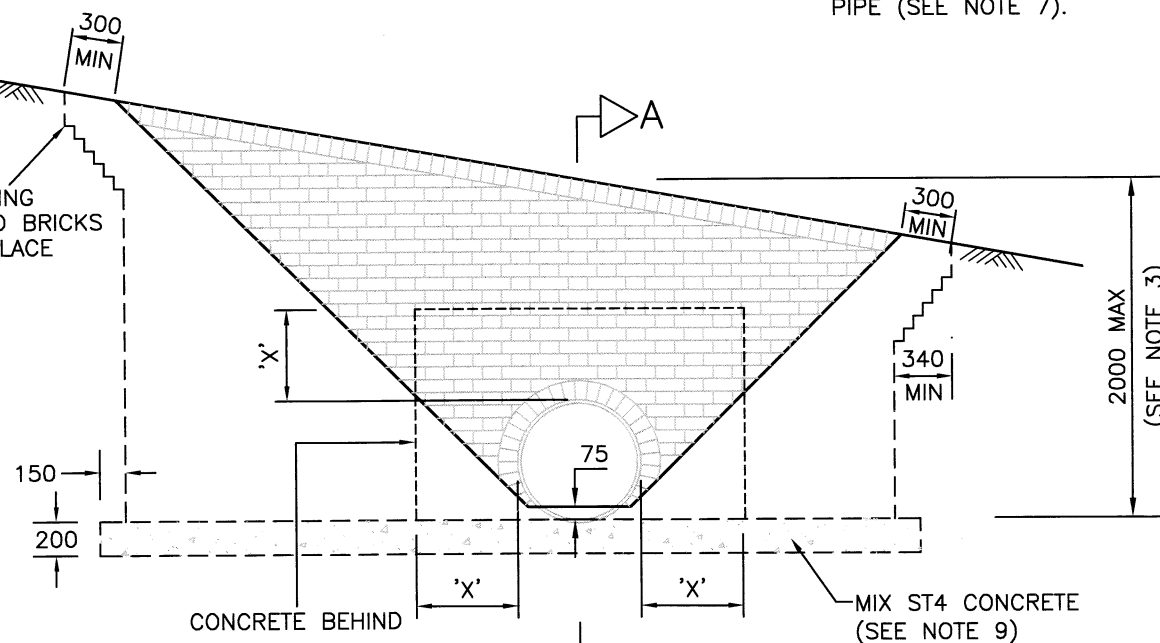
ELEVATION  
TYPE 2A (LEVEL TOP)

BRICK WALL TO BE CONSTRUCTED FIRST AND PROPPED WHILE CONCRETE IS POURED.



SECTION A-A

STAINLESS STEEL COPING CRAMPS TO HOLD END BRICKS OF TOP COURSE IN PLACE



ELEVATION  
TYPE 2B (INCLINED TOP)

NOTES:

1. ALL DIMENSIONS ARE IN MILLIMETRES.
2. BRICKWORK SHALL BE IN FLEMISH BOND HIGH DENSITY TYPE CLASS B SOLID CLAY ENGINEERING BRICKS TO BS EN 771-1 AND CLAUSE 2406 LAID ON CLASS (i) MORTAR TO CLAUSE 2404.
3. WALL DIMENSIONS SHALL BE AS STATED IN APPENDIX 5/1.
4. UNLESS OTHERWISE SPECIFIED BACKFILL AROUND HEADWALL SHALL BE IN ACCORDANCE WITH CLAUSE 507.7.
5. FOR ANY DITCH PROTECTION ADJACENT TO HEADWALL REFER TO ENGINEERING PLANS.
6. FOR HEADWALL NOT EXCEEDING 1000 IN HEIGHT CONCRETE BACKING MAY BE REPLACED WITH BRICKWORK BONDED INTO FACEWORK.
7. THE PIPE CONNECTING TO THE HEADWALL SHALL HAVE AN ARTICULATED SECTION ALL AS CLAUSE 507.17.
8. JOINT FINISH TO EXPOSED BRICKWORK SHALL BE 'BUCKET HANDLE'.
9. ALL CEMENT USED IN INSITU CONCRETE SHALL BE CII(A OR B)-S OR CIII A OR B TO BS 8500-2, TABLE 1 AND ANNEX A.

REV	AMENDMENTS	DATE	CAD	CHKD	APPD
-	-	-	-	-	-

CONSULTANT



SCHEME

STANDARD DETAILS

DRAWING TITLE

HEADWALL  
TYPE 2A & 2B  
BRICK FACED  
NOT EXCEEDING 2.0m IN HEIGHT

HCC CADplot: 18.Sep.2015 at 2:09pm

DRAWN	CHECKED	SCALE @ A3
MC	WW, WW	N.T.S
CAD	APPROVED	DATE
MC	CP, [Signature]	July 2015
DRG No.	REVISION	
HCC10/D/095	-	

Copyright Hampshire County Council. 2015

All rights, including translation, reserved. No part of this publication may be reproduced, stored in a retrieval system, or transmitted in any form or by any means (electronic, mechanical, photocopied, recorded or otherwise) without the prior written permission of Hampshire County Council. Requests should be directed to the Economy, Transport & Environment Department.