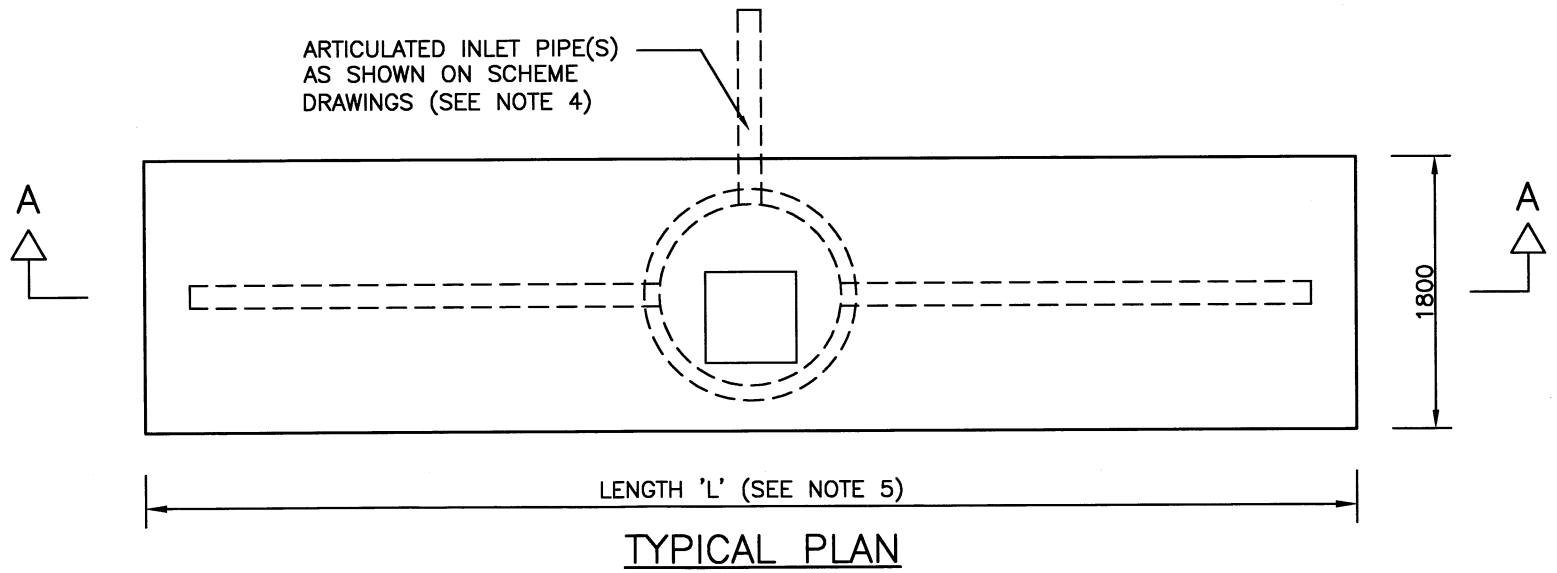


SECTION A-A



TYPICAL PLAN

- NOTES:**
1. ALL DIMENSIONS ARE IN MILLIMETRES.
 2. CHAMBER RINGS, COVER SLAB AND PERFORATIONS ALL TO BS 5911-3 & BS EN 1917. MANHOLE STEPS ARE NOT TO BE PROVIDED IN SOAKAWAYS.
 3. GEOTEXTILE TO SIDES, BASE AND COVER TO BACKFILL SHALL BE THERMALLY BONDED NON-WOVEN. (TERRAM 1000 OR EQUIVALENT).
 4. ALL INLET PIPES CONNECTING TO THE CHAMBER SHALL HAVE AN ARTICULATED SECTION (ROCKER PIPE) ALL AS CLAUSE 507.17. THE ARTICULATED PIPE SHALL NOT BE RESTRICTED BY THE FILTER MATERIAL.
 5. TYPE 3 'L' = 8000
TYPE 3A 'L' = 16000
TYPE 3B 'L' = 24000
 6. ALL CEMENT USED IN INSITU CONCRETE SHALL BE CII(A OR B)-S OR CIII A OR B TO BS 8500-2, TABLE 1 AND ANNEX A.
 7. THE CONTRACTOR IS TO PROVIDE TEMPORARY WORKS DETAILS AND A METHOD STATEMENT FOR APPROVAL BY THE OVERSEEING ORGANISATION AT LEAST 2 WEEKS PRIOR TO CONSTRUCTION.

REV	AMENDMENTS	DATE	CAD	CHKD	APPD
-	-	-	-	-	-

CONSULTANT

Hampshire County Council Engineering CONSULTANCY

STUART JARVIS BSc DipTP FCIHT MRTPI: DIRECTOR OF ECONOMY, TRANSPORT & ENVIRONMENT

SCHEME

STANDARD DETAILS

DRAWING TITLE

**SOAKAWAYS
TYPE S3, S3A, S3B**

HCC CADplot: 25.Nov.2015 at 4:49pm		
DRAWN	CHECKED	SCALE @ A3
RB	WW <i>WW</i>	N.T.S
CAD	APPROVED	DATE
RB	CP <i>CP</i>	July 2015
DRG No.	REVISION	
HCC10/D/080	-	

Copyright Hampshire County Council. 2015

All rights, including translation, reserved. No part of this publication may be reproduced, stored in a retrieval system, or transmitted in any form or by any means (electronic, mechanical, photocopied, recorded or otherwise) without the prior written permission of Hampshire County Council. Requests should be directed to the Economy, Transport & Environment Department.