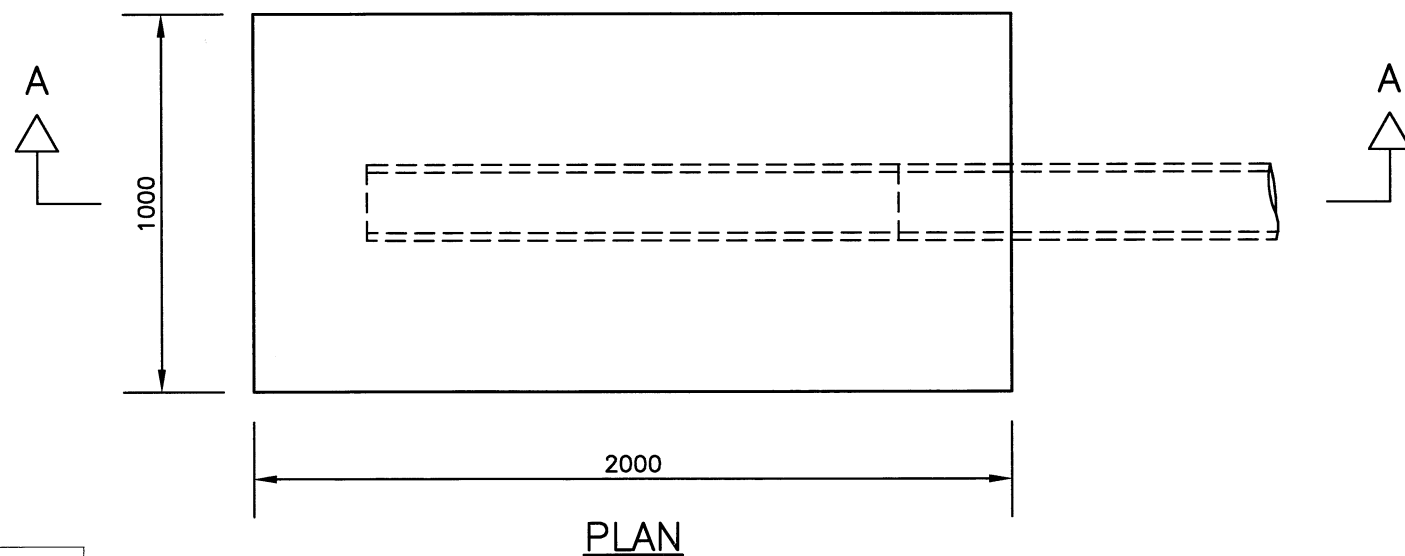


SECTION A - A



PLAN

NOTES:

1. ALL DIMENSIONS ARE IN MILLIMETRES.
2. THE JOINT BETWEEN THE CARRIER PIPE AND THE PERFORATED PIPE SHALL BE COMPATIBLE.
3. THE END OF THE PERFORATED PIPE SHALL BE WRAPPED IN A GEOTEXTILE MEMBRANE TO PREVENT INGRESS OF FILTER MATERIAL (TERRAM 100 OR EQUIVALENT).
4. THIS DETAIL SHALL NOT BE USED FOR THE DISCHARGE OF HIGHWAY DRAINAGE.
5. THE CONTRACTOR IS TO PROVIDE TEMPORARY WORKS DETAILS AND A METHOD STATEMENT FOR APPROVAL BY THE OVERSEEING ORGANISATION AT LEAST 2 WEEKS PRIOR TO CONSTRUCTION.

REV	AMENDMENTS	DATE	CAD	CHKD	APPD
-	-	-	-	-	-

CONSULTANT

STUART JARVIS BSc DipTP FCIHT MRTPI: DIRECTOR OF ECONOMY, TRANSPORT & ENVIRONMENT

SCHEME

STANDARD DETAILS

DRAWING TITLE

**SOAKAWAYS
TYPE S1 AND S1A**

HCC CADplot: 19.Nov.2015 at 11:47am		
DRAWN	CHECKED	SCALE @ A3
RB	WW, WW	N.T.S
CAD	APPROVED	DATE
RB	CP	July 2015
DRG No.	REVISION	
HCC10/D/070	-	

Copyright Hampshire County Council. 2015

All rights, including translation, reserved. No part of this publication may be reproduced, stored in a retrieval system, or transmitted in any form or by any means (electronic, mechanical, photocopied, recorded or otherwise) without the prior written permission of Hampshire County Council. Requests should be directed to the Economy, Transport & Environment Department.