

MULTIPLE DUCTILE IRON COVER AND FRAME SHALL HAVE A CLEAR OPENING OF 1220 x 685. THE COVER AND FRAME SHALL CONFORM WITH THE REQUIREMENTS IN APPENDIX 5/1. THE FRAME SHALL BE BEDDED ON MINIMUM 15 THICKNESS OF POLYESTER RESIN MORTAR.

BRICKWORK TO BE CORBELLED (MAXIMUM 30 STEP PER COURSE) TO SUIT COVER.

WHERE MANHOLE IS LOCATED IN THE VERGE, A MORTAR HAUNCHING IS TO BE PROVIDED TO THE COVER AND FRAME.

225 THICK HIGH DENSITY TYPE CLASS B SOLID CLAY ENGINEERING BRICKS TO BS EN 771-1 AND CLAUSE 2406 LAID ON CLASS (i) MORTAR TO CLAUSE 2404 (SEE NOTE 3).

BRICK ARCH OVER PIPE

BENCHING SLOPE 1 IN 10 TO 1 IN 30. HIGH-STRENGTH CONCRETE TOPPING (GRANOLITHIC FINISH) MIN. 20 THICK.

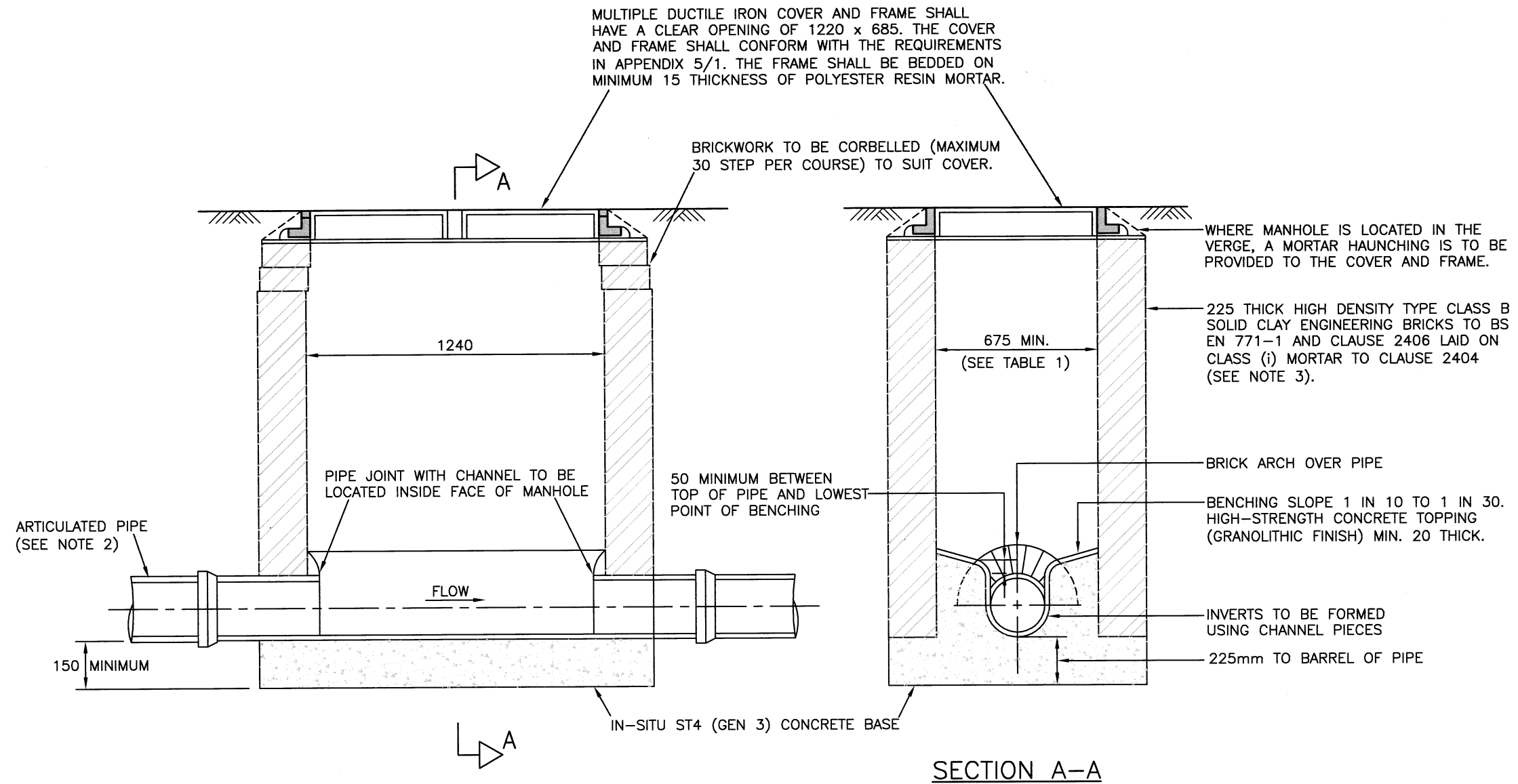
INVERTS TO BE FORMED USING CHANNEL PIECES

225mm TO BARREL OF PIPE

50 MINIMUM BETWEEN TOP OF PIPE AND LOWEST POINT OF BENCHING

IN-SITU ST4 (GEN 3) CONCRETE BASE

SECTION A-A



TYPE	LARGEST PIPE DIA	CHAMBER SIZE
M3A	UP TO 225	1240 x 675
M3B	375 UP TO 700	1240 x 900

TABLE 1

NOMINAL PIPE DIA	EFFECTIVE LENGTH
150 TO 375	600

TABLE 2

NOTES:

1. ALL DIMENSIONS ARE IN MILLIMETRES.
2. ALL PIPES CONNECTING TO THE CHAMBER SHALL HAVE AN ARTICULATED SECTION (ROCKER PIPE) WITH A JOINT AS CLOSE AS POSSIBLE TO THE CHAMBER TO PERMIT SUBSEQUENT MOVEMENT. THE LENGTH OF ARTICULATED PIPES SHALL BE AS SHOWN IN TABLE 2, BELOW.
3. IF THE CHAMBER IS TO BE TRAFFICKED WITHIN 48 HOURS OF BRICKWORK CONSTRUCTION A RAPID HARDENING CEMENTITIOUS OR POLYESTER RESIN MORTAR SHALL BE USED.
4. FOR MANHOLES TO BE ADOPTED BY OTHERS, THE REQUIREMENTS REGARDING THE PROVISION OF STEP IRONS ARE CONTAINED IN APPENDIX 5/1, TABLE 5/1. OTHERWISE, STEP IRONS ARE NOT TO BE INSTALLED.
5. ALL CEMENT USED IN INSITU CONCRETE SHALL BE CII(A OR B)-S OR CIII A OR B TO BS 8500-2, TABLE 1 AND ANNEX A.
6. INTERNAL DIMENSIONS OF MANHOLE NOMINALLY 1240mm x 675mm BUT MANHOLE WIDTH SHOULD BE INCREASED FOR PIPES LARGER THAN 225mm DIAMETER TO GIVE 225mm BENCHING EACH SIDE. BRICKWORK SHALL CORBELLED DOWN TO SUIT.
7. APPROVAL OF THE UNDERTAKER MUST BE GIVEN FOR INSTALLATION OF THIS TYPE OF MANHOLE.
8. THE CONTRACTOR IS TO PROVIDE TEMPORARY WORKS DETAILS AND A METHOD STATEMENT FOR APPROVAL BY THE OVERSEEING ORGANISATION AT LEAST 2 WEEKS PRIOR TO CONSTRUCTION.

REV	AMENDMENTS	DATE	CAD	CHKD	APPD
-	-	-	-	-	-

CONSULTANT

STUART JARVIS BSc DipTP FCILT MRTPI: DIRECTOR OF ECONOMY, TRANSPORT & ENVIRONMENT

SCHEME

STANDARD DETAILS

DRAWING TITLE

**MANHOLE
TYPES M3A & M3B
(BRICK, DEPTH EXCEEDING
1.0m BUT NOT 1.5m)**

DRAWN	CHECKED	SCALE @ A3
MC	WW <i>WW</i>	N.T.S
CAD	APPROVED	DATE
MC	CP <i>CP</i>	July 2015
DRG No.	REVISION	
HCC10/D/055	-	

Copyright Hampshire County Council. 2015

All rights, including translation, reserved. No part of this publication may be reproduced, stored in a retrieval system, or transmitted in any form or by any means (electronic, mechanical, photocopied, recorded or otherwise) without the prior written permission of Hampshire County Council. Requests should be directed to the Economy, Transport & Environment Department.

HCC CADfile: K:\Eng\Standard\AutoCAD\Standard Details (Secure) As Updated Dec 2011\2015 STANDARD DETAILS-NOT YET RELEASED\Series\D-055.dwg